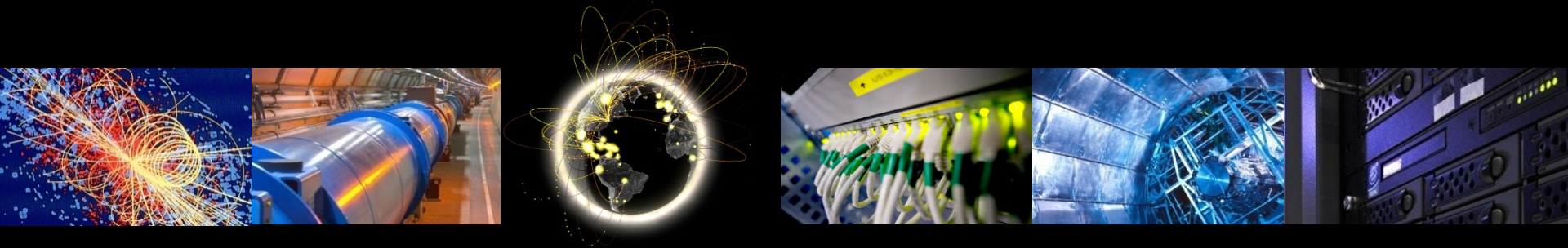


An update on the Cached BDII

Lorenzo Dini – WLCG Information Officer

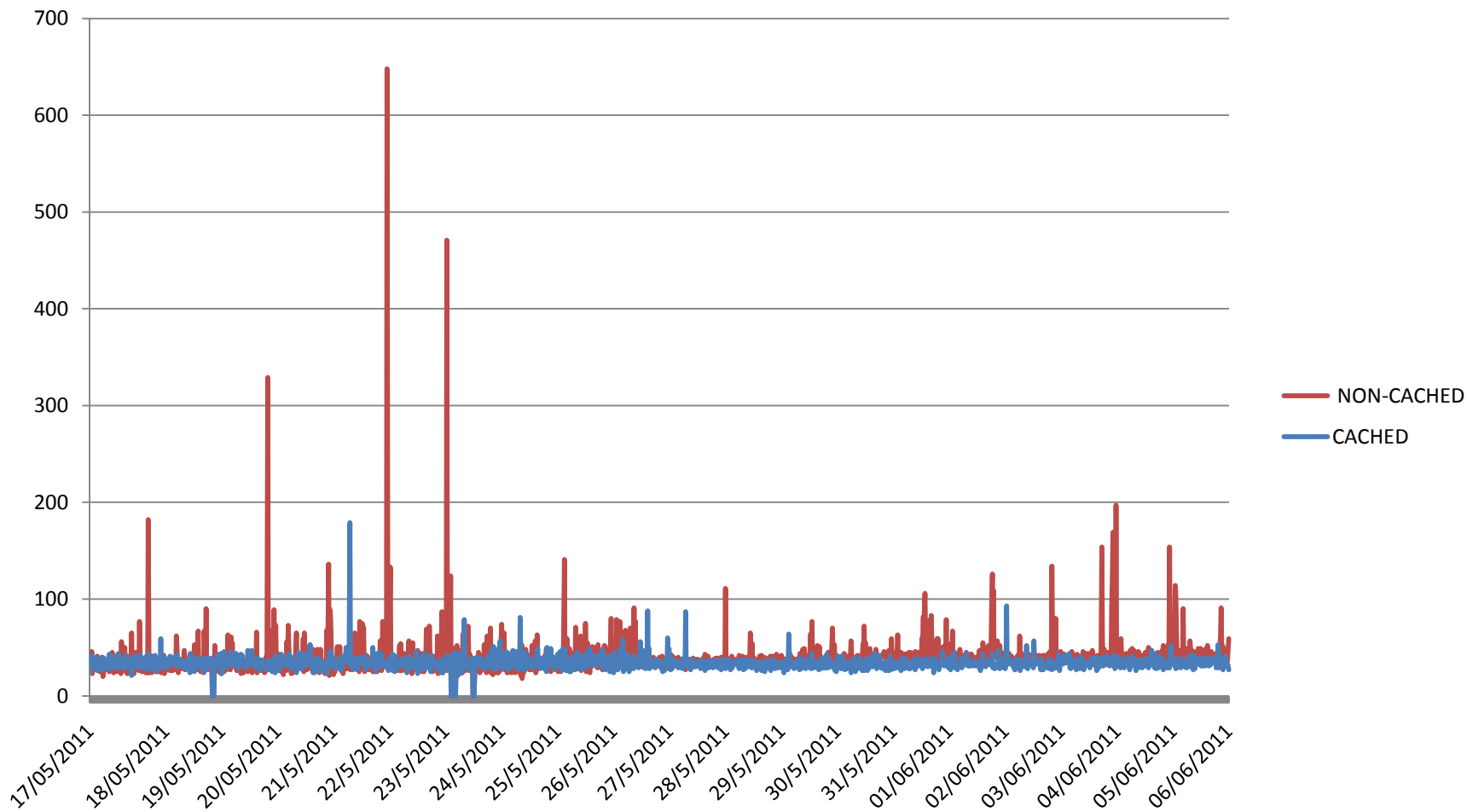
June 08, 2011



Overview

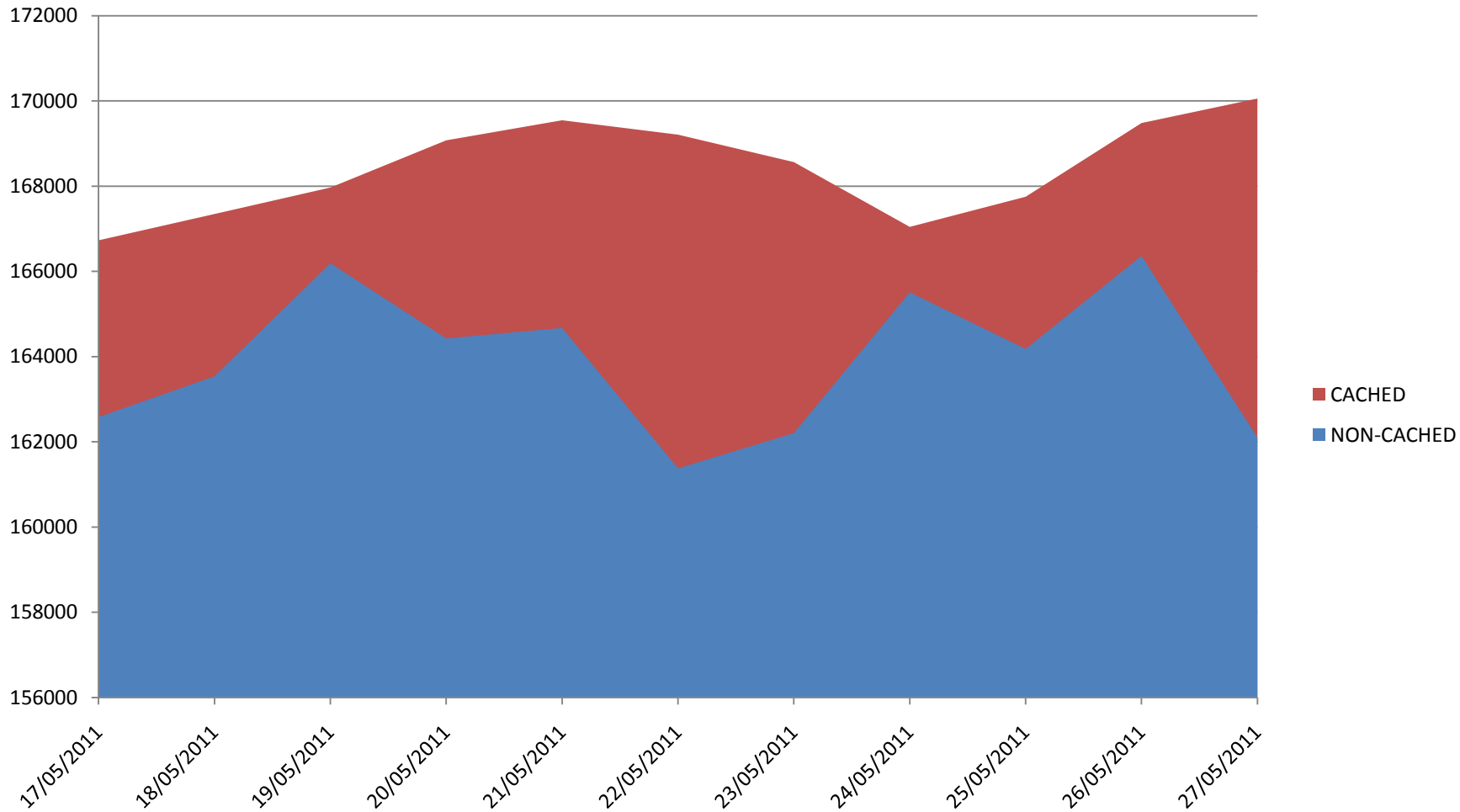
- To Cache Or Not To Cache
 - How the cache impacts on the service
 - What are the benefits on stability
- Tests performed on production-like hardware
- Non-Cached: `lcg-bdii.cern.ch`
 - Production DNS round-robin
- Cached: `clcg-bdii.cern.ch`
 - Dedicated test service with **4-day** cache enabled
 - Same hardware as any node of `lcg-bdii.cern.ch`

Content Dump (seconds)



Average time: 5.4 seconds faster

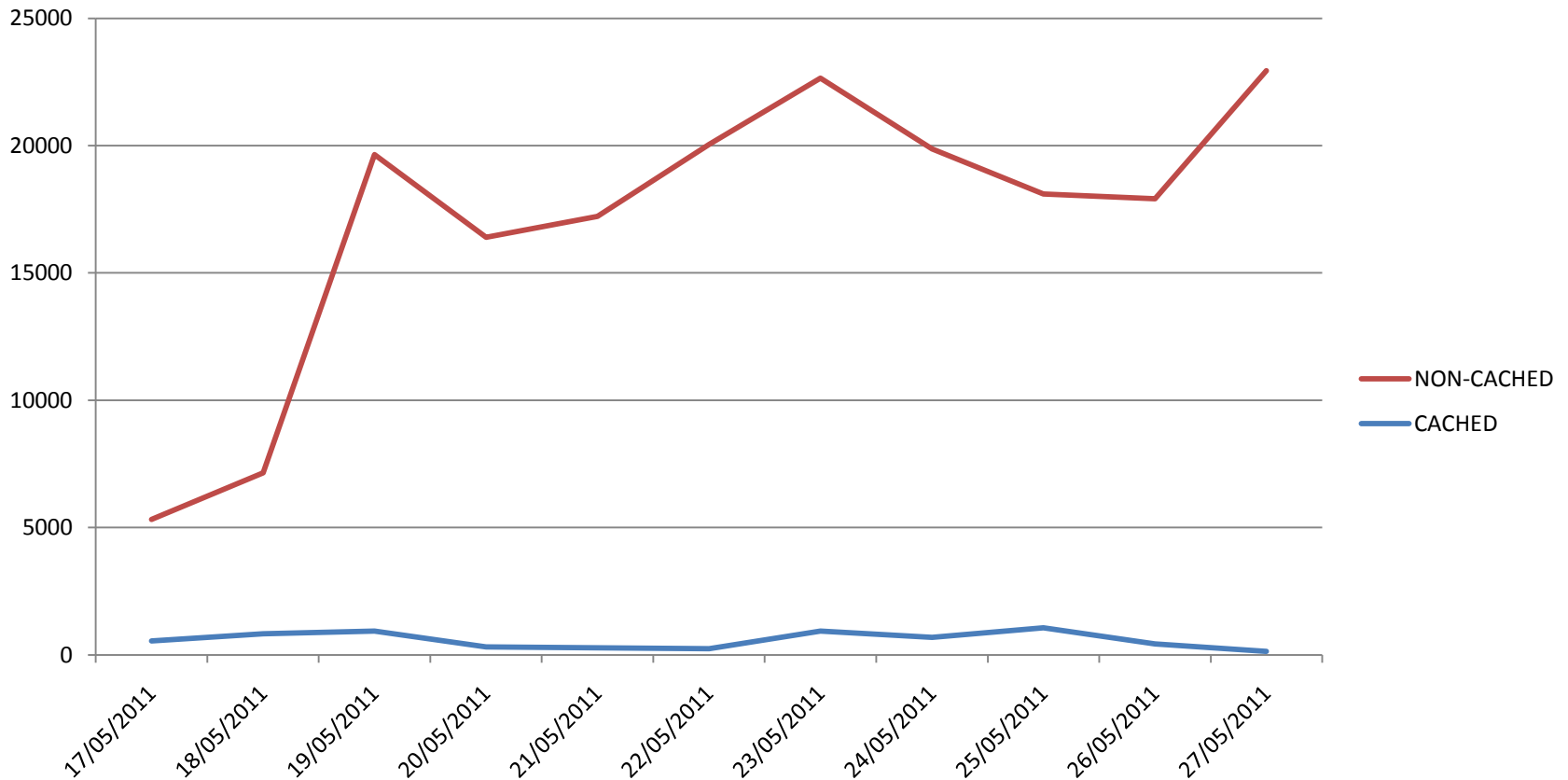
Total Objects



Average overhead: 3% (4500 objects)

Objects Added/Removed

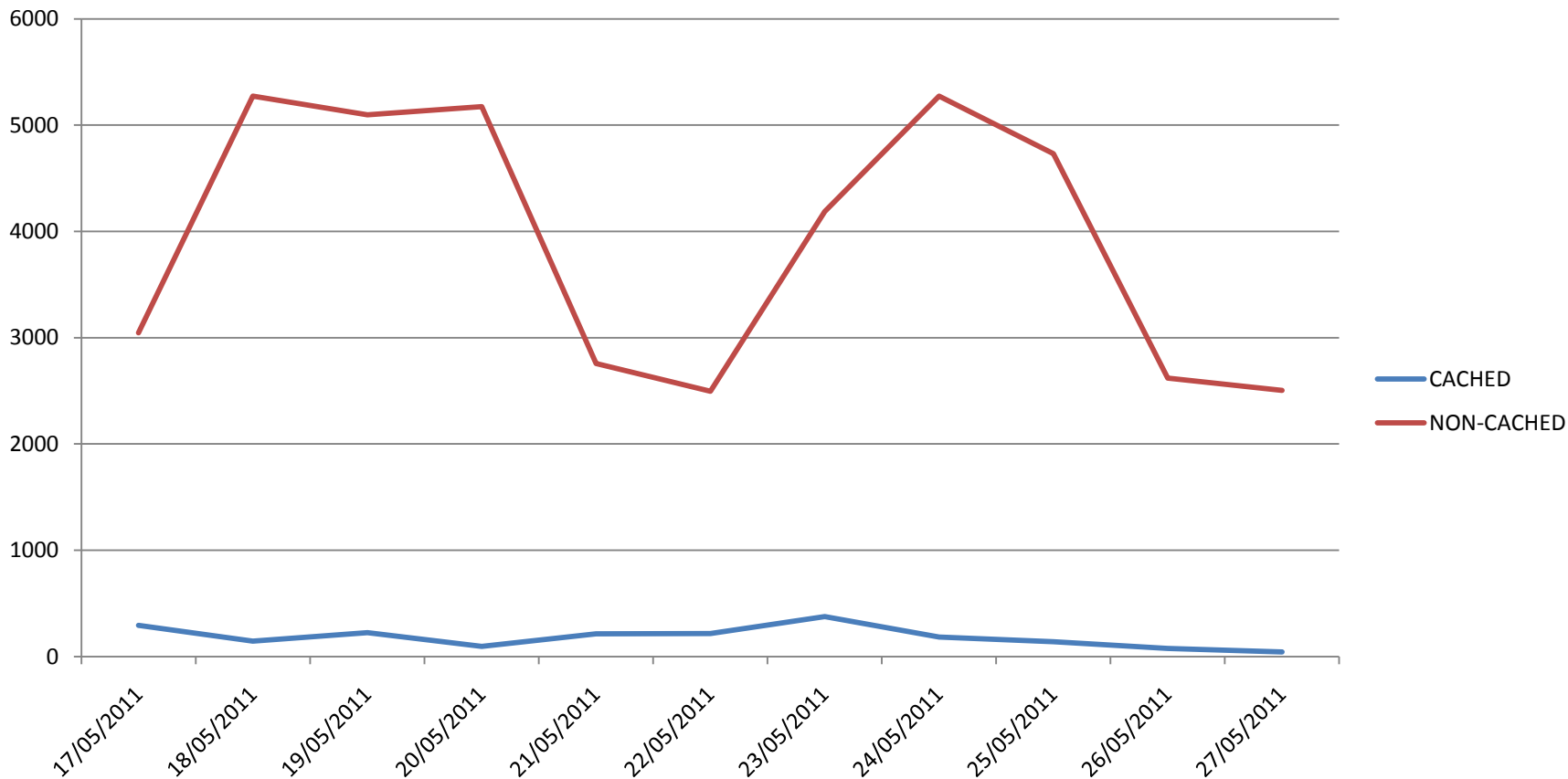
All objects



Average improvement: 46X

Objects Added/Removed

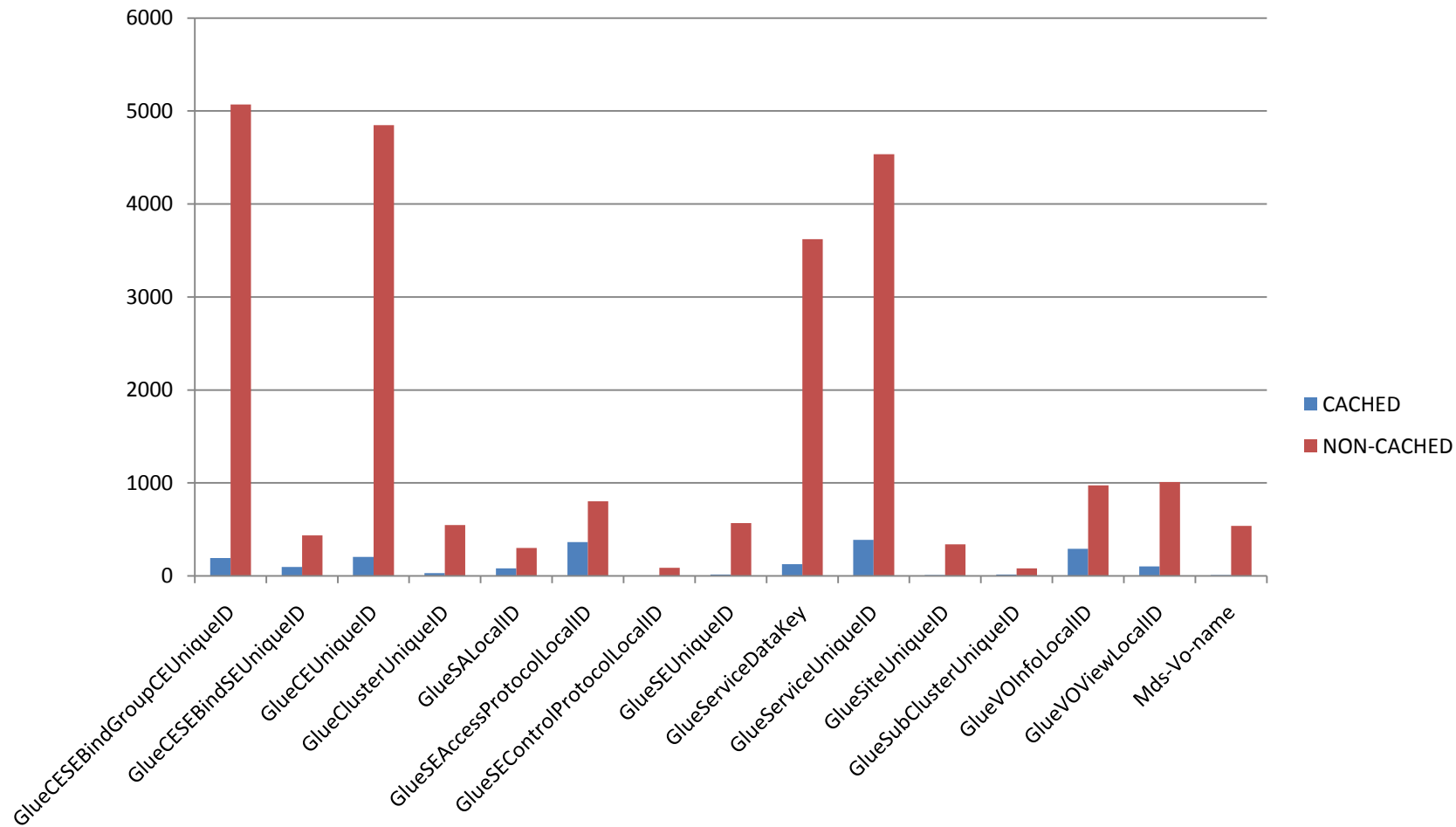
No GlueLocationLocalID



Average improvement: 28X

Added/Removed per type

No GlueLocationLocalID



Conclusions

- No query performance degradation
- Small size overhead (3% in object number)
- Stability highly improved (28X – 46X)
- Ready for Prime Time!
- Next steps
 - Functional testing by experiments
 - Introduce it to the lcg-bdii DNS round-robin
 - Cache enabled by default in production