

# SRM 2.2: status of the implementations and GSSD



3<sup>rd</sup> April 2007

Flavia Donno



# Issues

- Network problems with ESNNet.
  - Router in Chicago losing packets and causing transfers between CERN and FNAL to hang. Similar problems were seen with transfers between LBNL and FNAL.
  - An upgrade was performed by ESNNet about 2 weeks ago. However, problems observed already 4 weeks ago and transfers appeared slowly deteriorating with time.
  - A fix was put in place by ESNNet last Thursday. However, we still observe hanging transfers for the stress test endpoint at FNAL.
  - The dCache team at FNAL has been fully involved to understand the source of the problem. Huge debugging effort also at CERN (Maarten and Flavia). We asked if notifications about such problems are posted somewhere. A user-level monitoring tool is being put in place.
- Temporary problem: DPM ran out of VOLATILE space.
- CASTOR: until yesterday few instabilities to be fixed. From yesterday major instabilities (basic and usecase) due to Name Server and/or network intervention (back-end suspected).
- dCache: no improvements with usecase yet mostly due to the network problem investigations and preparation for 1.8beta release.



# Testing Plan

- Plan for 1Q of 2007 :

- Phase 1: From 16 Dec 2006 until end of January 2007:**

- Availability and Basic tests
- Collect and analyze results, update page with status of endpoints:  
<https://twiki.cern.ch/twiki/bin/view/SRMDev/ImplementationsProblems>
- Plot results per implementation: number of failures/number of tests executed for all SRM MoU methods.
- Report results to WLCG MB.



- Phase 2: From beginning until end of February 2007:**

- Perform tests on use-cases (GFAL/lcg-utils/FTS/experiment specific), boundary conditions and open issues in the spec that have been agreed on.
- Plot results as for phase 1 and report to WLCG MB.



- Phase 3: From 1 March until "satisfaction" :**

- Stress testing
- Add more SRM 2.2 endpoints (some T1s ?)
- Plot results as for phase 2 and report to WLCG MB.



# Stress tests

- Started on the 22<sup>nd</sup> of March 2007.
  - Running manually once or twice a day.
- Yesterday we received from FIO 9 more machines to dedicate to stress tests.
  - Relocatable rpms created for test suite. Binaries linked statically to avoid installing dependencies.
    - Such rpms are being used by SAM. First attempts to integrate tests in SAM successful.
    - RPMs also used by CMS to develop PheDex usecases (with S2 libraries) for SAM
  - A mechanism is being put in place to run stress tests from all machines, collect results, aggregate and publish them.
- Not really possible at the moment to stress test CASTOR because of PutDone being too slow (it can kill the server). Next software version containing also the LSF plugin fix needed.
- dCache stress endpoint does not yet answer correctly to stress situations. We are working with Dmitry to improve the situation.
- DPM and BeStMan behaves well under stress with the resources we have at the moment.
- Some problems observed with StoRM. The developers have worked to improve the situation.



# Basic and Usecase test families

- Developing more tests to explicitly check for new scenarios
  - BringOnline for dCache and Castor (simulating the problems experienced by LHCb with dCache SRM v1.1)
  - AbortRequest/Files used by FTS to recover from errors and implement retries
  - Correct output parameters returned in special conditions (size, file locality, etc.) - CASTOR : on one occasion, srmStatusOfGetRequest operation returned an invalid file size (different from previously returned values).
- Tests executed as usual 5 times per day on endpoints that are usually not the same as the ones used for the stress tests.



# Tests executed

Summary of S2 SRM v2.2 basic test - Sunday 18 March 2007 08:13p

SRM function	<a href="#">CERN CASTOR</a>	<a href="#">FNAL DCACHE</a>	<a href="#">CERN DPM</a>	<a href="#">LBNL BeStMan</a>	<a href="#">STORM</a>
WLCG MoU SRM v2.2 methods					
Ping	Not Out Log	Not Out Log	Not Out Log	Not Out Log	Not Out Log
PrepareToPut	Not Out Log	Not Out Log	Not Out Log	Not Out Log	Not Out Log
StatusOfPutRequest	Not Out Log	Not Out Log	Not Out Log	Not Out Log	Not Out Log
PutDone	Not Out Log	Not Out Log	Not Out Log	Not Out Log	Not Out Log
PrepareToGet	Not Out Log	Not Out Log	Not Out Log	Not Out Log	Not Out Log
StatusOfGetRequest	Not Out Log	Not Out Log	Not Out Log	Not Out Log	Not Out Log
BringOnline	Not Out Log	Not Out Log	Not Out Log	Not Out Log	Not Out Log
StatusOfBringOnlineRequest	Not Out Log	Not Out Log	Not Out Log	Not Out Log	Not Out Log
AbortRequest	Not Out Log	Not Out Log	Not Out Log	Not Out Log	Not Out Log
AbortFiles	Not Out Log	Not Out Log	Not Out Log	Not Out Log	Not Out Log
ReleaseFiles	Not Out Log	Not Out Log	Not Out Log	Not Out Log	Not Out Log
GetRequestSummary	Not Out Log	Not Out Log	Not Out Log	Not Out Log	Not Out Log
GetRequestTokens	Not Out Log	Not Out Log	Not Out Log	Not Out Log	Not Out Log
GetTransferProtocols	Not Out Log	Not Out Log	Not Out Log	Not Out Log	Not Out Log
Ls	Not Out Log	Not Out Log	Not Out Log	Not Out Log	Not Out Log
Mkdir	Not Out Log	Not Out Log	Not Out Log	Not Out Log	Not Out Log
Rmdir	Not Out Log	Not Out Log	Not Out Log	Not Out Log	Not Out Log
Rm	Not Out Log	Not Out Log	Not Out Log	Not Out Log	Not Out Log
Mv	Not Out Log	Not Out Log	Not Out Log	Not Out Log	Not Out Log
ReserveSpace	Not Out Log	Not Out Log	Not Out Log	Not Out Log	Not Out Log
StatusOfReserveSpaceRequest	Not Out Log	Not Out Log	Not Out Log	Not Out Log	Not Out Log
ReleaseSpace	Not Out Log	Not Out Log	Not Out Log	Not Out Log	Not Out Log
GetSpaceTokens	Not Out Log	Not Out Log	Not Out Log	Not Out Log	Not Out Log
GetSpaceMetaData	Not Out Log	Not Out Log	Not Out Log	Not Out Log	Not Out Log
ExtendFileLifeTime	Not Out Log	Not Out Log	Not Out Log	Not Out Log	Not Out Log
WLCG MoU SRM v2.2 methods needed by end of 2007					
Copy	Not Out Log	Not Out Log	Not Out Log	Not Out Log	Not Out Log
StatusOfCopyRequest	Not Out Log	Not Out Log	Not Out Log	Not Out Log	Not Out Log
ChangeSpaceForFiles	Not Out Log	Not Out Log	Not Out Log	Not Out Log	Not Out Log
StatusOfChangeSpaceForFilesRequest	Not Out Log	Not Out Log	Not Out Log	Not Out Log	Not Out Log

Summary of S2 SRM v2.2 basic test - Tuesday 3 April 2007 03:45pm CEST

SRM function	<a href="#">CERN CASTOR</a>	<a href="#">FNAL DCACHE</a>	<a href="#">CERN DPM</a>	<a href="#">LBNL BeStMan</a>	<a href="#">STORM</a>
WLCG MoU SRM v2.2 methods					
Ping	Not Out Log	Not Out Log	Not Out Log	Not Out Log	Not Out Log
PrepareToPut	Not Out Log	Not Out Log	Not Out Log	Not Out Log	Not Out Log
StatusOfPutRequest	Not Out Log	Not Out Log	Not Out Log	Not Out Log	Not Out Log
PutDone	Not Out Log	Not Out Log	Not Out Log	Not Out Log	Not Out Log
PrepareToGet	Not Out Log	Not Out Log	Not Out Log	Not Out Log	Not Out Log
StatusOfGetRequest	Not Out Log	Not Out Log	Not Out Log	Not Out Log	Not Out Log
BringOnline	Not Out Log	Not Out Log	Not Out Log	Not Out Log	Not Out Log
StatusOfBringOnlineRequest	Not Out Log	Not Out Log	Not Out Log	Not Out Log	Not Out Log
AbortRequest	Not Out Log	Not Out Log	Not Out Log	Not Out Log	Not Out Log
AbortFiles	Not Out Log	Not Out Log	Not Out Log	Not Out Log	Not Out Log
ReleaseFiles	Not Out Log	Not Out Log	Not Out Log	Not Out Log	Not Out Log
GetRequestSummary	Not Out Log	Not Out Log	Not Out Log	Not Out Log	Not Out Log
GetRequestTokens	Not Out Log	Not Out Log	Not Out Log	Not Out Log	Not Out Log
GetTransferProtocols	Not Out Log	Not Out Log	Not Out Log	Not Out Log	Not Out Log
Ls	Not Out Log	Not Out Log	Not Out Log	Not Out Log	Not Out Log
Mkdir	Not Out Log	Not Out Log	Not Out Log	Not Out Log	Not Out Log
Rmdir	Not Out Log	Not Out Log	Not Out Log	Not Out Log	Not Out Log
Rm	Not Out Log	Not Out Log	Not Out Log	Not Out Log	Not Out Log
Mv	Not Out Log	Not Out Log	Not Out Log	Not Out Log	Not Out Log
ReserveSpace	Not Out Log	Not Out Log	Not Out Log	Not Out Log	Not Out Log
StatusOfReserveSpaceRequest	Not Out Log	Not Out Log	Not Out Log	Not Out Log	Not Out Log
ReleaseSpace	Not Out Log	Not Out Log	Not Out Log	Not Out Log	Not Out Log
GetSpaceTokens	Not Out Log	Not Out Log	Not Out Log	Not Out Log	Not Out Log
GetSpaceMetaData	Not Out Log	Not Out Log	Not Out Log	Not Out Log	Not Out Log
ExtendFileLifeTime	Not Out Log	Not Out Log	Not Out Log	Not Out Log	Not Out Log



# Tests executed

## Availability

Summary of S2 SRM v2.2 availability test - Sunday 18 March 2007 06:04pm CET

CERN CASTOR	FNAL DCACHE	CERN DPM	LBNL BeStMan	STORM
UP	UP	UP	UP	UP

Summary of S2 SRM v2.2 availability test - Tuesday 3 April 2007 03:04pm CEST

CERN CASTOR	FNAL DCACHE	CERN DPM	LBNL BeStMan	STORM
DOWN	UP	UP	UP	UP

## Interoperability Cross Copy

Summary of S2 SRM v2.2 cross test - Sunday 18 March 2007 07:06pm CET

In these tests the srmCopy function is exercised. This function should be implemented by all available Storage System by the end of the 3Q of 2007. dCache is required to implement this function as of now. Therefore, it is OK to have red columns for all SRM endpoints except for dCache. However, it is not OK to have red rows since this means that a file cannot be copied between SRMs with simple get and put operations.

SRM function	CERN CASTOR not needed	FNAL DCACHE	CERN DPM not needed	LBNL BeStMan	STORM
<b>Copy Tests in PUSH mode</b>					
CopyToCERNCASTOR	StdOut Log	StdOut Log	StdOut Log	StdOut Log	StdOut Log
CopyToFNALDCACHE	StdOut Log	StdOut Log	StdOut Log	StdOut Log	StdOut Log
CopyToCERNNDPM	StdOut Log	StdOut Log	StdOut Log	StdOut Log	StdOut Log
CopyToLBNLDRM	StdOut Log	StdOut Log	StdOut Log	StdOut Log	StdOut Log
CopyToSTORM	StdOut Log	StdOut Log	StdOut Log	StdOut Log	StdOut Log
<b>Copy Tests in PULL mode</b>					
CopyFromCERNCASTOR	StdOut Log	StdOut Log	StdOut Log	StdOut Log	StdOut Log
CopyFromFNALDCACHE	StdOut Log	StdOut Log	StdOut Log	StdOut Log	StdOut Log
CopyFromCERNNDPM	StdOut Log	StdOut Log	StdOut Log	StdOut Log	StdOut Log
CopyFromLBNLDRM	StdOut Log	StdOut Log	StdOut Log	StdOut Log	StdOut Log
CopyFromSTORM	StdOut Log	StdOut Log	StdOut Log	StdOut Log	StdOut Log

*DRM  
short  
lifetime  
on  
default  
space*

*StoRM  
No Copy  
In pull  
mode*

Summary of S2 SRM v2.2 cross test - Tuesday 3 April 2007 10:14am CEST

In these tests the srmCopy function is exercised. This function should be implemented by all available Storage System by the end of the 3Q of 2007. dCache is required to implement this function as of now. Therefore, it is OK to have red columns for all SRM endpoints except for dCache. However, it is not OK to have red rows since this means that a file cannot be copied between SRMs with simple get and put operations.

SRM function	CERN CASTOR not needed	FNAL DCACHE	CERN DPM not needed	LBNL BeStMan	STORM
<b>Copy Tests in PUSH mode</b>					
CopyToCERNCASTOR	StdOut Log	StdOut Log	StdOut Log	StdOut Log	StdOut Log
CopyToFNALDCACHE	StdOut Log	StdOut Log	StdOut Log	StdOut Log	StdOut Log
CopyToCERNNDPM	StdOut Log	StdOut Log	StdOut Log	StdOut Log	StdOut Log
CopyToLBNLDRM	StdOut Log	StdOut Log	StdOut Log	StdOut Log	StdOut Log
CopyToSTORM	StdOut Log	StdOut Log	StdOut Log	StdOut Log	StdOut Log
<b>Copy Tests in PULL mode</b>					
CopyFromCERNCASTOR	StdOut Log	StdOut Log	StdOut Log	StdOut Log	StdOut Log
CopyFromFNALDCACHE	StdOut Log	StdOut Log	StdOut Log	StdOut Log	StdOut Log
CopyFromCERNNDPM	StdOut Log	StdOut Log	StdOut Log	StdOut Log	StdOut Log
CopyFromLBNLDRM	StdOut Log	StdOut Log	StdOut Log	StdOut Log	StdOut Log
CopyFromSTORM	StdOut Log	StdOut Log	StdOut Log	StdOut Log	StdOut Log







# Tests executed

## *Stress Test*

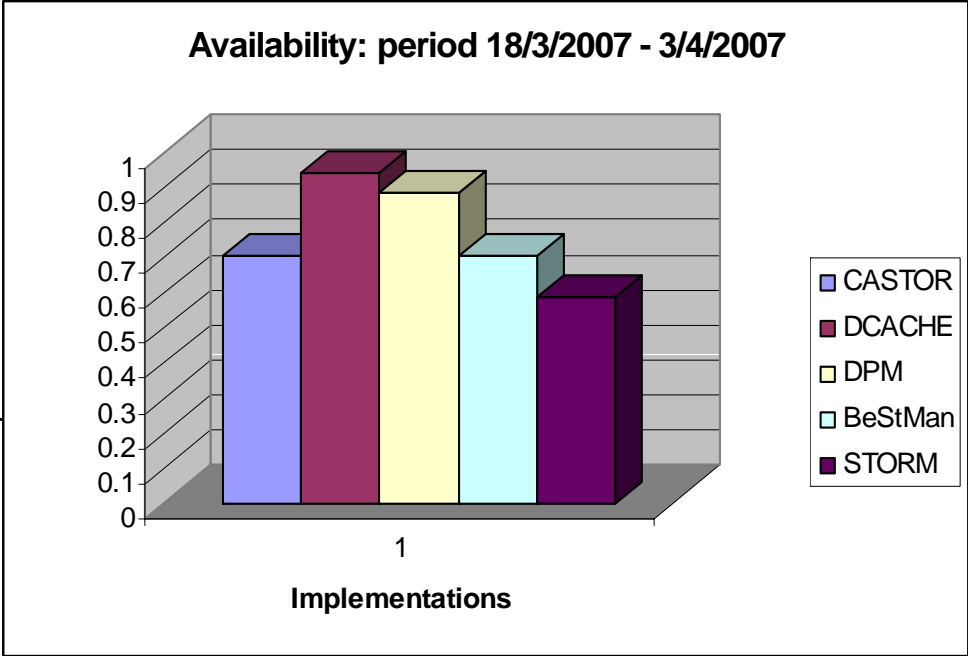
**Summary of S2 SRM v2.2 stress test - Thursday 29 March 2007  
12:49am CEST**

SRM test	<u>CERN</u> CASTOR	<u>FNAL</u> DCACHE	<u>CERN</u> DPM	<u>LBLN</u> BeStMan	<u>STORM</u>
BringOnline	<a href="#">StdOut Log</a>	<a href="#">StdOut Log</a>	<a href="#">StdOut Log</a>	<a href="#">StdOut Log</a>	<a href="#">StdOut Log</a>
GetParallel	<a href="#">StdOut Log</a>	<a href="#">StdOut Log</a>	<a href="#">StdOut Log</a>	<a href="#">StdOut Log</a>	<a href="#">StdOut Log</a>
GetParallelTransf	<a href="#">StdOut Log</a>	<a href="#">StdOut Log</a>	<a href="#">StdOut Log</a>	<a href="#">StdOut Log</a>	<a href="#">StdOut Log</a>
PutGet01	<a href="#">StdOut Log</a>	<a href="#">StdOut Log</a>	<a href="#">StdOut Log</a>	<a href="#">StdOut Log</a>	<a href="#">StdOut Log</a>
PutMany	<a href="#">StdOut</a>	<a href="#">StdOut</a>	<a href="#">StdOut</a>	<a href="#">StdOut</a>	<a href="#">StdOut</a>
ReserveSpace	<a href="#">StdOut Log</a>	<a href="#">StdOut Log</a>	<a href="#">StdOut Log</a>	<a href="#">StdOut Log</a>	<a href="#">StdOut Log</a>

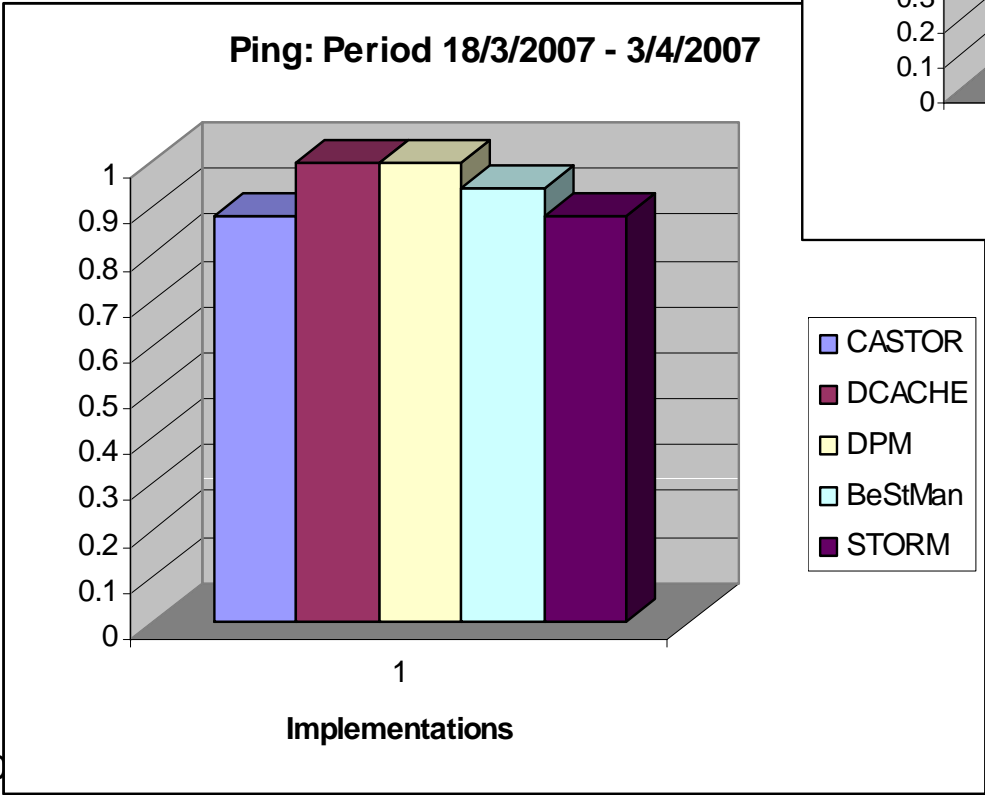
# Test results



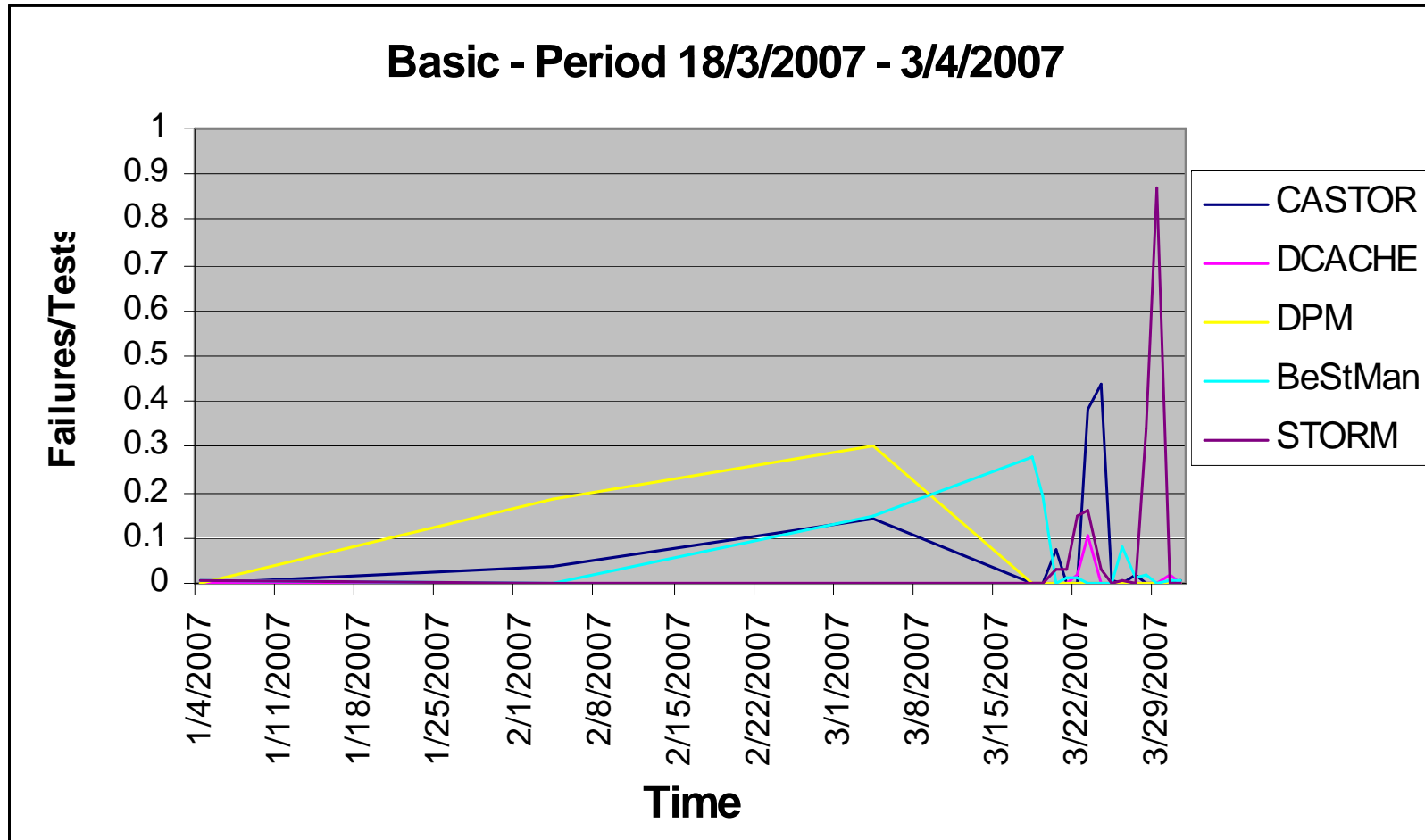
Availability: period 18/3/2007 - 3/4/2007



Ping: Period 18/3/2007 - 3/4/2007

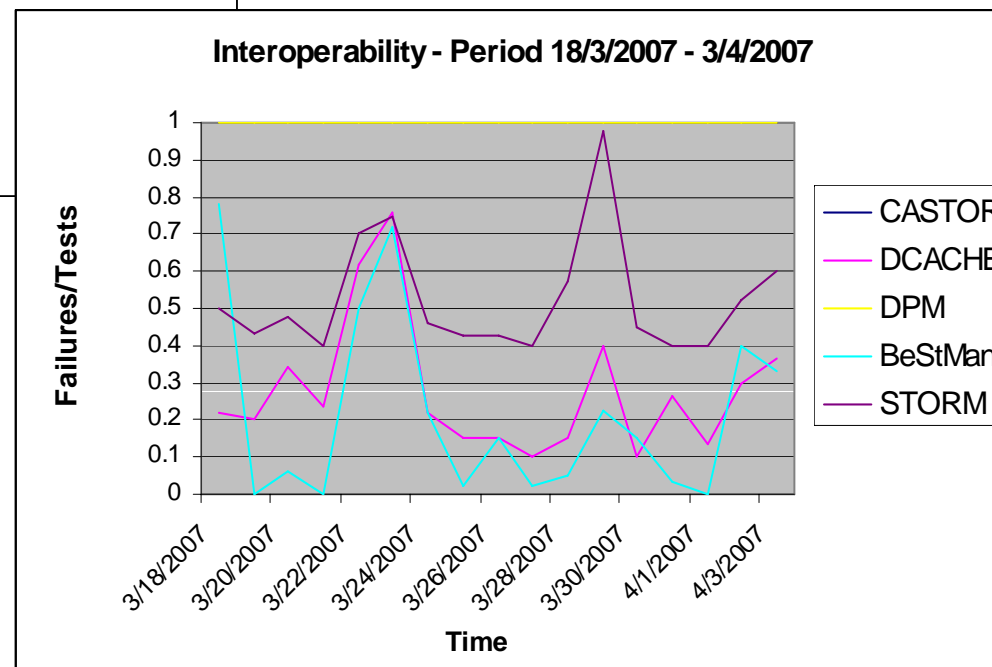
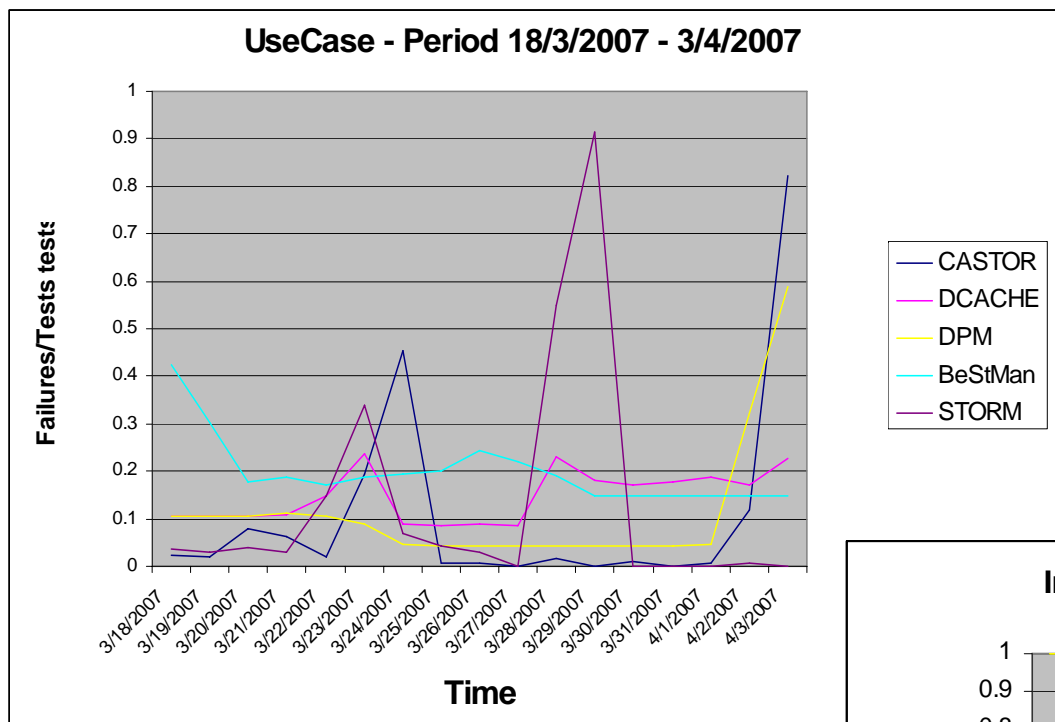


# Test results





# Test results





# Available endpoints

- **dCache**
  - Stress and functionality endpoints available at FNAL with dCache 1.7 + development version of SRM
  - As of today, new endpoint available at DESY with dCache v1.8beta.
- **CASTOR**
  - Functionality and stress endpoints available at CERN
  - A stress test endpoint (c2itdc) with the new version of the CASTOR software (PutDone + LSF plugin fix) may be made available tomorrow
- **DPM**
  - New version (1.6.4) of DPM just released. 2 endpoints available at CERN. One used for functionality and stress testing.
  - Waiting for some UK site to install.
- **StoRM**
  - Only one endpoint available at CNAF used for functionality and stress tests.
  - A more robust endpoint is being made available for stress testing at CNAF.
  - Waiting for a wider deployment
- **BeStMan**
  - Only one endpoint available at LBNL user for both functionality and stress tests.



# SRM clients tests

- **GFAL/lcg-utils**
  - Independent tests are being made by Mirco Ciriello (INFN) using the latest versions of the clients available on all endpoints.
  - Lcg-utils OK for all implementations but BeStMan (it requires delegated proxy not supported by lcg-utils).
  - Some problems with GFAL for all endpoints but DPM: under investigations.
  - Results are published on the SRMDev Twiki page:
    - <https://twiki.cern.ch/twiki/bin/view/SRMDev>
  
- **FTS**
  - Tests executed almost daily. Results reported on srm-tester mailing list and published on Twiki:
    - <https://twiki.cern.ch/twiki/bin/view/SRMDev>
  - Tests OK for all implementations but BeStMan. Some details need to be worked out.
  - More endpoints will be added soon.

# Grid Storage System Deployment (GSSD)



- **Next face-to-face meeting at CERN on April 12, 2007**
  - SRM v1 to v2 migration plan
  - Experiments problems with Storage Services
  - Monitoring utilities
- **Parallel GSSD session during CMS off-line week**
  - Discussion of CMS input on Storage Classes and Tier-1s configuration
  - CMS GSSD Wiki pages are being updated (<https://twiki.cern.ch/twiki/bin/view/LCG/GSSD>)
- **Planning of activities and next face-to-face meetings**
  - On going
  - Major milestones discussed during July and September meetings.
  - US and ASIA need to be involved. We need to plan very well in advance.