

Electron-Muon Ranger (EMR)

EMR and MICE Hall Integration

R.Asfandiyarov¹, P.Béné¹, R.Bloch¹, A.Blondel¹,
D.Bolognini³, F.Cadoux¹, S.Débieux¹, J-S.Graulich¹,
C.Husi¹, D.Lietti³, F.Masciocchi¹, L.Nicola¹, M.Prest³,
K.Rothenfusser¹, E.Vallazza², V.Verguilov¹

¹DPNC, Université de Genève, Switzerland

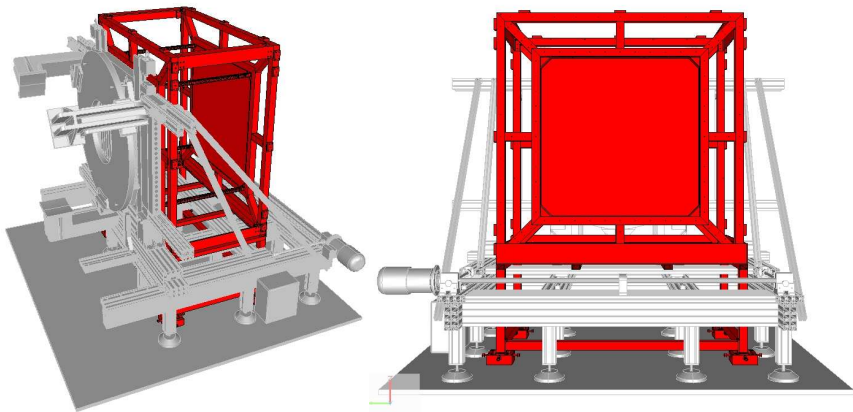
²INFN, Sezione di Trieste, Italy

³Università degli Studi dell'Insubria and INFN, Sezione di Milano Bicocca, Italy

MICE Collaboration Meeting 29, February 15-18, 2011

EMR at RAL

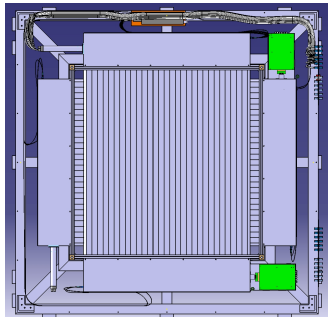
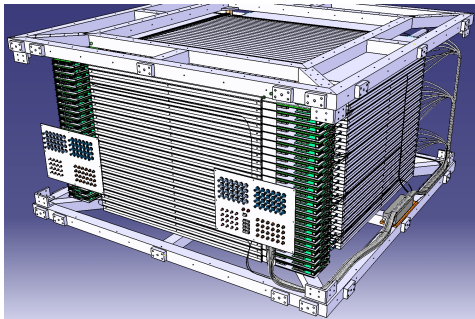
Integration with KL and Supporting Frame



The bottom chassis and related x-y-z system (x4) to tune the EMR position with respect to KL are under development.

Patch Panels

work in progress



- there will be 4 patch panels located on the sidewall of the outer box (more than 200 connections)
- to finalize the design of the patch panels and to order the cables we need to know...
 - location of VME crate wrt EMR
 - location of power supplies (HV and LV) wrt EMR
 - position and length of cables

EMR Schedule

	2011											
	February	March	April	May	June	July	August	September	October	November	December	
EMR construction and assembly	8 modules		16 modules + Outer box for transportation		24 modules			Complete EMR assembly				
Electronics	Production of 6 FEB+DBB And 1 VME board			DBB+VME Tests	Production of 48 FEB+DBB and 8 VME boards			Further tests of electronics				
Tests	Tests	Cosmic tests and calibration 8 modules	Cosmic tests and calibration 16 modules					Cosmic tests and calibration 24 modules				
Transportation					Delivery and installation of 3 modules at RAL				Delivery and installation of full EMR at RAL			
At RAL		CM 29				Test run at RAL 5 July – 5 August				Physics run at RAL 15 November – 23 December		