

Internet Access

Wifi SSID: CERN or CERNa

Start your browser, fill out a Network connection form

For contact person information:

Frank Zimmermann **-OR-** Massimo Giovannozzi **-OR-** Rama Calaga

CERN Department; BE

CERN Group: ABP

We will try to approve ASAP

Network Connection Request Form .

Network Connection Request Forms - External Visitor's Computer Registration

Consult the "Portable computers at CERN: Visitors" page for more information

You intend to visit CERN, and want to make use of the CERN network infrastructure with a Portable PC or MAC you will bring with you onsite. Before you can get access to the CERN network, you need to fill this form and get approval from your CERN contact person (CERN staff, fellow or contract personnel).

During your stay, you are required to follow the "CERN Rules and Regulations", available by [CLICKING HERE](#).

Please fill in requested fields. Mandatory fields are marked with (*). Please do not forget to submit your request by selecting the "Send Request" button at the end of this page. [HELP](#) is available by selecting the links on this page.

Please do not use this form if you are a CERN employee, if this is the case you should use the Register Portable facility of the Network Request web interface.

Personal Visitor's Details:

| | | | |
|-------------------------|----------------------|------------------|----------------------|
| • Name(*): | <input type="text"/> | • First Name(*): | <input type="text"/> |
| • Company/Institute(*): | <input type="text"/> | | |
| • Phone (*): | <input type="text"/> | • E-mail(*): | <input type="text"/> |

(Mobile if possible; please provide all necessary international prefixes)

Visit's Details:

| | | | |
|----------------------------|----------------------|---------------------------|-------------------------------------|
| • Arrival Date>(*): | <input type="text"/> | • Length of your stay(*): | <input type="text" value="1 week"/> |
| • Reason for the visit:(*) | <input type="text"/> | | |

Internet Rule & Regulations

CERN computing rules:

<http://cern.ch/ComputingRules>

Skype configuration:

<http://security.web.cern.ch/security/rules/en/skype.shtml>

Configure to port 50123 & NO supernode functionality disabled

P2P applications (Strictly prohibited):

<http://security.web.cern.ch/security/rules/en/p2p.shtml>

Some Logistics

Coffee Breaks (morning & afternoon):

Down the stairs on the right

Lunch (Restaurants 1 & 2):

R2 is closer to us. Take right at the bldg. exit and up the hill (~100m)

R1 closer to CERN entrance A

Toilets

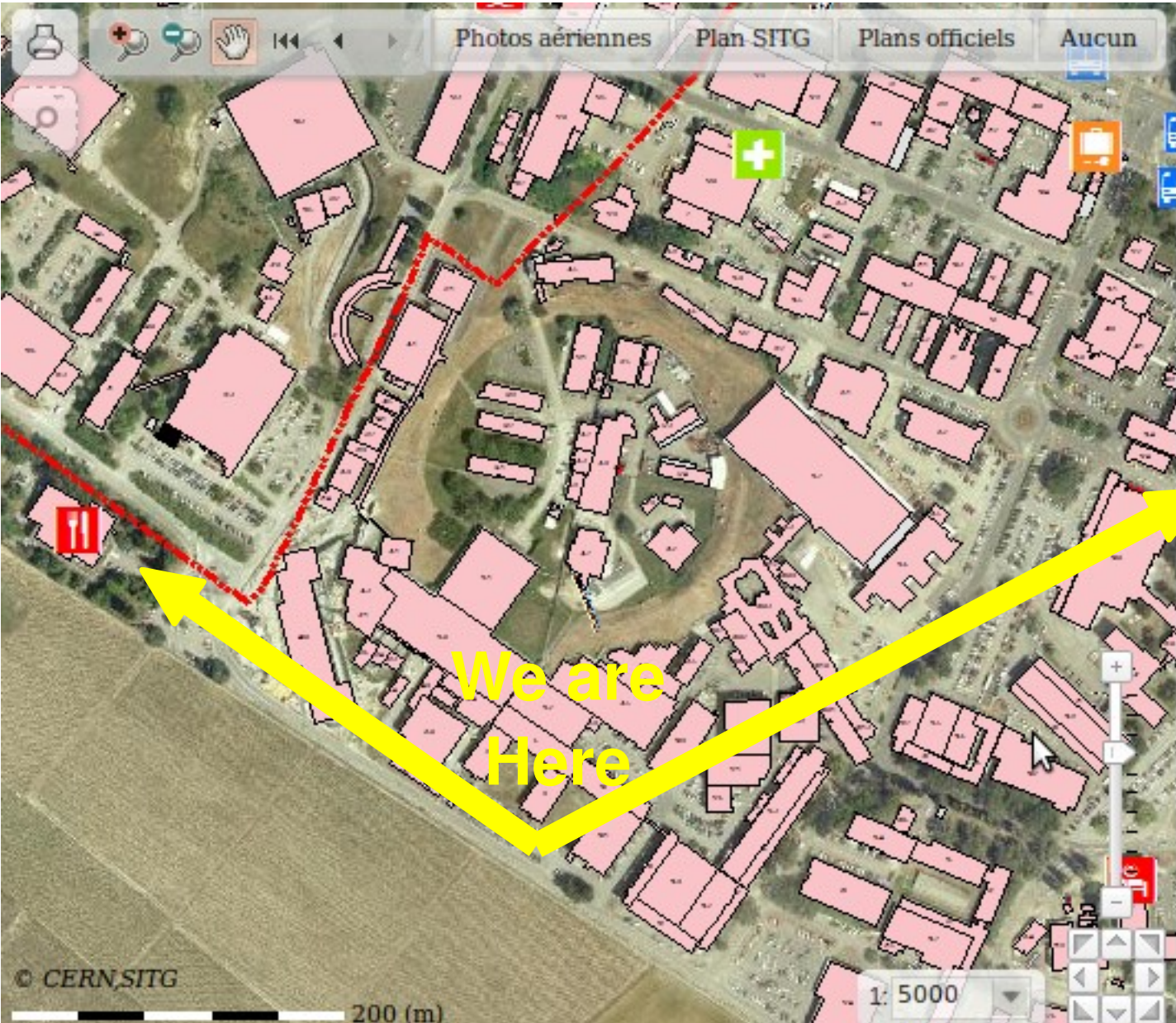
Take right, down the stairs and left

Down stairs, U-turn and walk down the hallway.

LUNCH

Rest 2

Rest 1



We are Here

© CERN, SITG

200 (m)

1: 5000

Optics Workshop, OMCM

June 20-22, 2011

Workshop Goal:

The LHC, its luminosity upgrade HL-LHC, its injectors upgrade LIU and other high performance storage rings around the world are facing challenging requirements for optics measurements, correction and modeling. This workshop aims to do a review of the existing techniques to measure and control linear and non-linear optics parameters. The precise optics determination has proven to be a key ingredient to improve the performance of the past and present accelerators.

The goal of the workshop is to assess the limits of the present techniques and evaluate new paths for improvement.

Dinner Tuesday, 7:30pm

For those who opted to attend dinner:

Venue:

Perle du Lac - 126

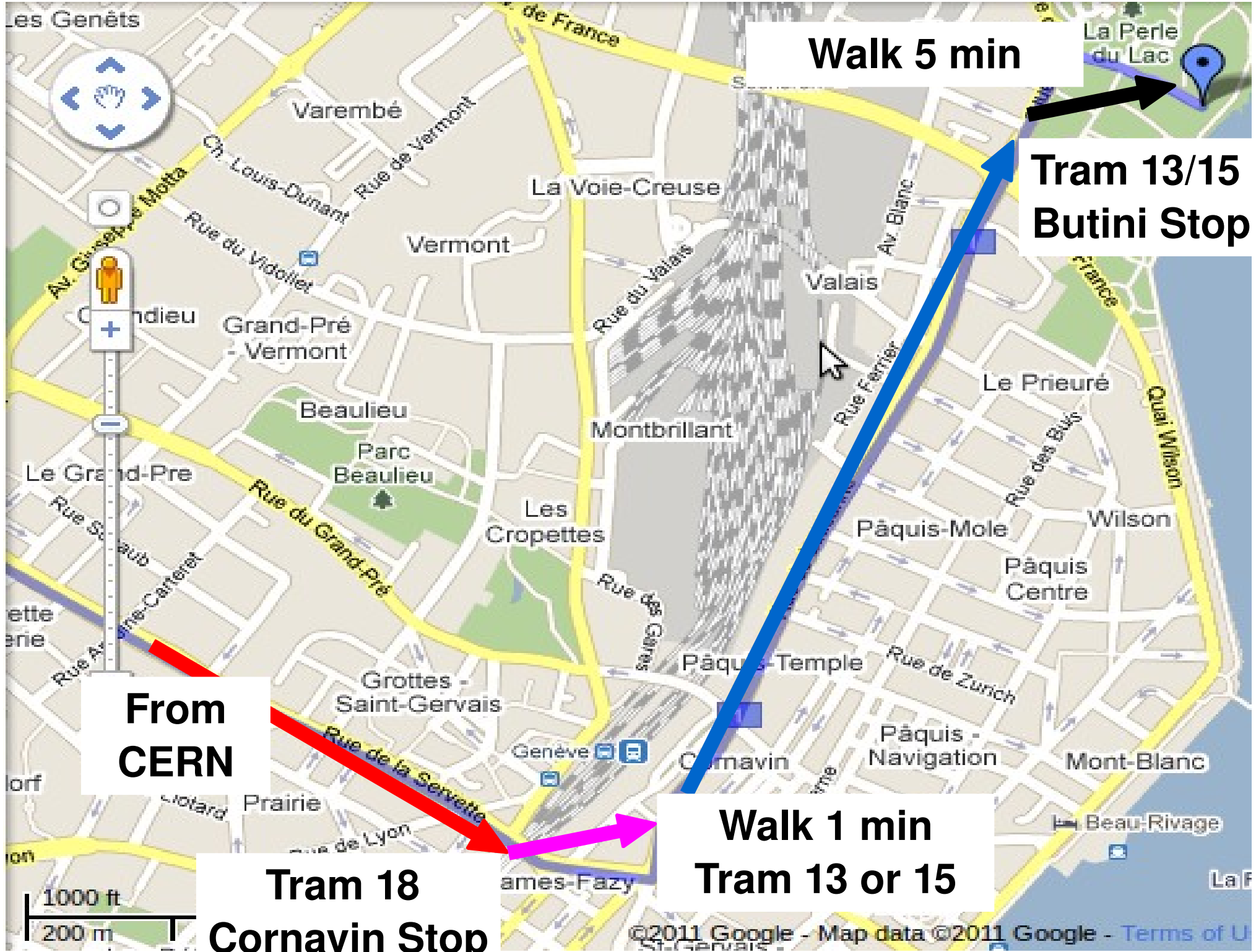
rue de Lausanne - CH-1202 Genève

Tél. +41(0)22 909 10 20

** HIGHLY recommend to use public transport

Tram 18 CERN to Cornavin → Tram 13/15 to Butini

→ Walk 5 min



**From
CERN**

**Tram 18
Cornavin Stop**

**Walk 1 min
Tram 13 or 15**

Walk 5 min

**Tram 13/15
Butini Stop**

**Also possible to go there via Boat
Limited places**

**30 min
Boat Ride**

**From
CERN**

**Walk 10 min
Via Boat, 7pm**

**Tram 18
Cornavin Stop**

