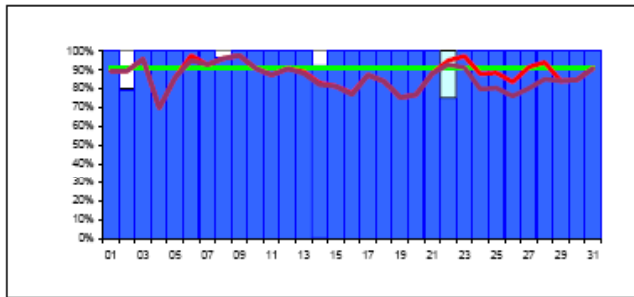




Reliability Reports –August 2007

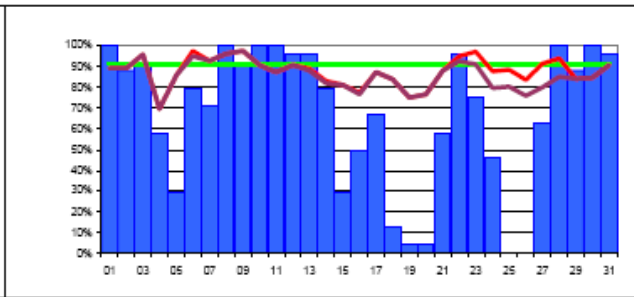
http://lcg.web.cern.ch/LCG/MB/availability/site_reliability.pdf

	CERN-PROD	FZK-LCG2	IN2P3-CC	INFN-T1	RAL-LCG2	SARA-MATRIX	TRIUMF-LCG2	Taiwan-LCG2	USCMS-FNAL-WC1	PIC	BNL-LCG2
1	100%	100%	96%	100%	100%	71%	79%	100%	100%	96%	38%
2	79%	88%	75%	67%	100%	75%	100%	100%	100%	100%	96%
3	100%	92%	92%	71%	96%	100%	100%	100%	100%	100%	100%
4	100%	58%	100%	25%	100%	29%	100%	100%	100%	33%	21%
5	100%	29%	100%	100%	100%	71%	100%	100%	96%	67%	79%
6	100%	79%	100%	92%	100%	100%	100%	100%	100%	100%	100%
7	100%	71%	92%	71%	100%	100%	100%	100%	88%	100%	96%
8	96%	100%	92%	71%	100%	100%	96%	100%	100%	100%	100%
9	100%	92%	100%	100%	100%	100%	100%	100%	100%	100%	79%
10	100%	100%	100%	88%	96%	96%	100%	17%	100%	100%	100%
11	100%	100%	100%	71%	100%	100%	96%	0%	100%	100%	92%
12	100%	96%	100%	100%	100%	100%	100%	0%	100%	100%	100%
13	100%	96%	100%	100%	100%	100%	100%	0%	100%	100%	82%
14	92%	79%	100%	100%	100%	67%	83%	0%	100%	100%	91%
15	100%	29%	100%	100%	100%	0%	100%	63%	100%	100%	100%
16	100%	50%	63%	29%	96%	50%	100%	96%	100%	100%	67%
17	100%	67%	100%	71%	100%	92%	100%	100%	100%	100%	29%
18	100%	13%	100%	96%	100%	100%	100%	83%	100%	100%	29%
19	100%	4%	96%	38%	96%	100%	92%	100%	100%	100%	0%
20	100%	4%	100%	42%	100%	79%	100%	100%	100%	100%	17%
21	100%	58%	100%	67%	100%	100%	100%	100%	100%	100%	42%
22	100%	96%	100%	96%	100%	100%	96%	100%	100%	100%	54%
23	100%	75%	100%	100%	100%	100%	100%	100%	100%	100%	92%
24	100%	46%	88%		100%	96%	96%	100%	100%	100%	50%
25	100%	0%	100%		100%	100%	100%	100%	100%	100%	83%
26	100%	0%	92%		100%	100%	100%	100%	100%	100%	42%
27	100%	63%	100%		100%	100%	100%	100%	100%	100%	50%
28	100%	100%	79%		100%	100%	100%	100%	100%	63%	96%
29	100%	88%	96%	0%	96%	88%	92%	100%	100%	63%	100%
30	100%	100%	88%	17%	100%	79%	75%	100%	100%	100%	71%
31	100%	96%	100%	13%	100%	88%	100%	100%	100%	100%	100%
lity	99%	67%	95%	70%	99%	86%	97%	83%	99%	94%	71%



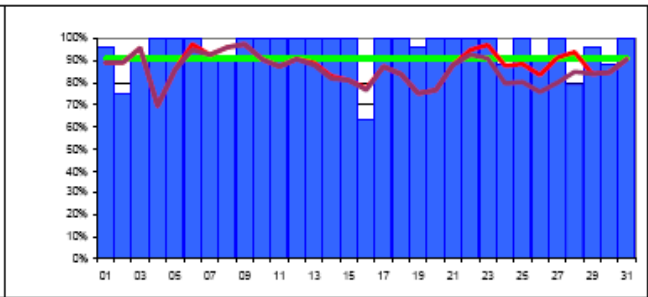
CERN

99%



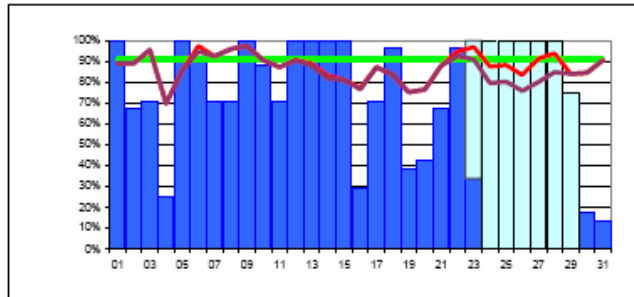
GridKa/FZK

67%



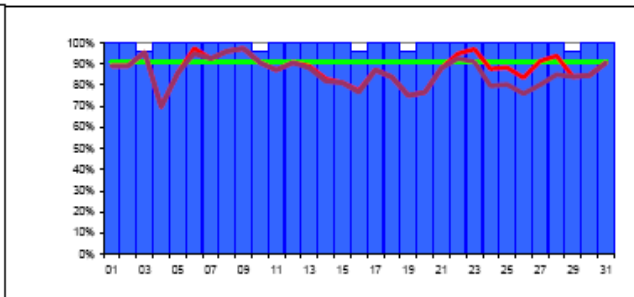
IN2P3

95%



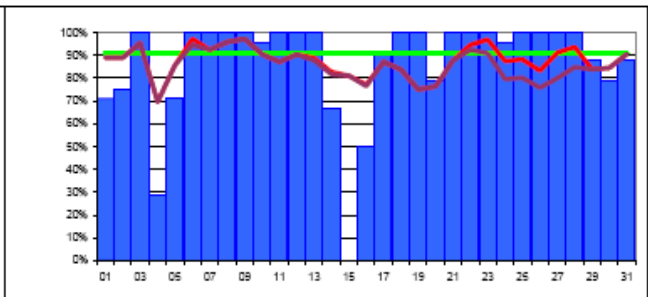
INFN/CNAF

70%



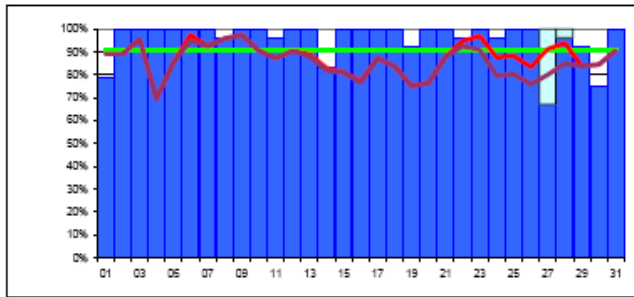
RAL

99%



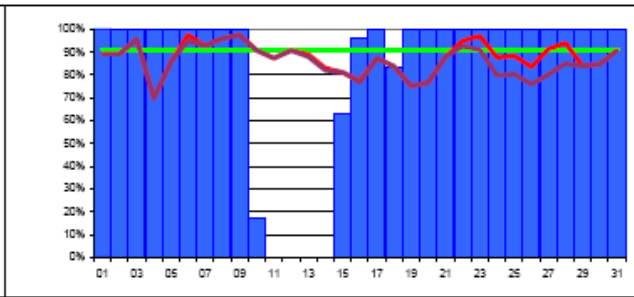
SARA-NIKHEF

86%



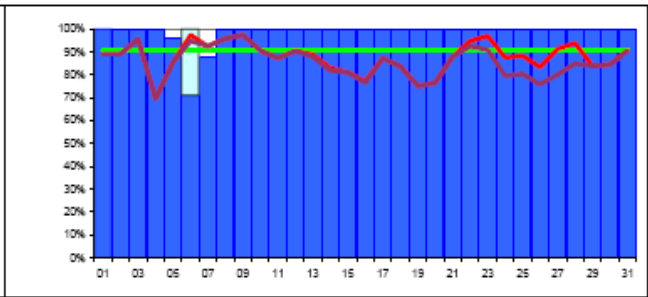
TRIUMF

97%



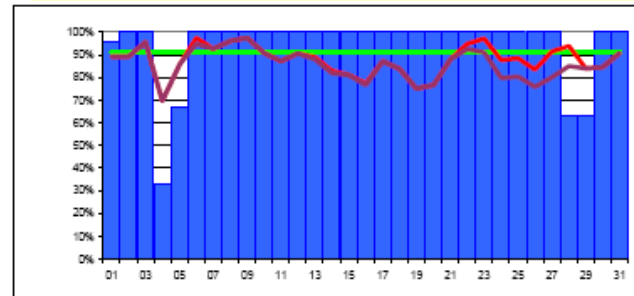
ASGC

83%



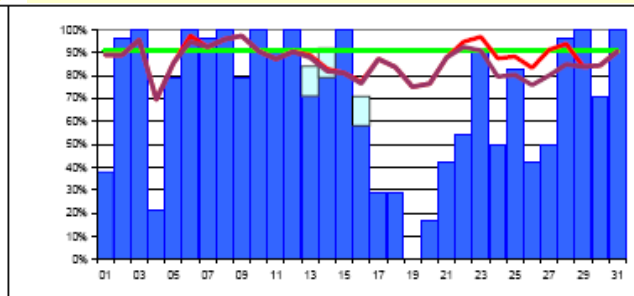
FNAL

99%



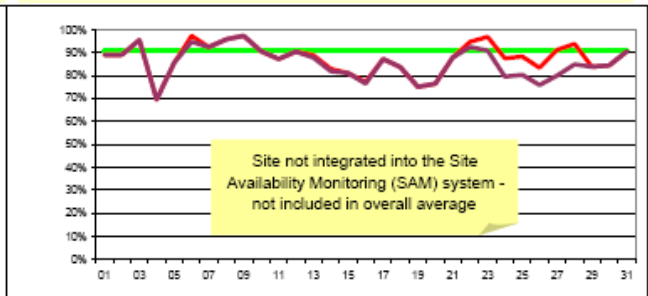
PIC

94%



BNL

71%



NDGF

n/a



January 07 to August 07

Site	Jan 07	Feb 07	Mar 07	Apr 07	May 07	Jun 07	Jul 07	Aug 07
CERN	99	91	97	96	90	96	95	99
GridKa/FZK	85	90	75	79	79	48	75	67
IN2P3	96	74	58	95	94	88	94	95
INFN/CNAF	75	93	76	93	87	67	82	70
RAL	80	82	80	87	87	87	98	99
SARA-NIKHEF	93	83	47	92	99	75	92	86
TRIUMF	79	88	70	73	95	95	97	97
ASGC	96	97	95	92	98	80	83	83
FNAL	84	67	90	85	77	77	92	99
PIC	86	86	96	95	77	79	96	94
BNL	90	57*	6*	89	98	94	75	71
NDGF	n/a	n/a	n/a	n/a	n/a	n/a	n/a	n/a
Reliability Target	88	88	88	88	88	91	91	91
Target + 90% target	5 + 5	6 + 3	4 + 1	7 + 3	6 + 3	3 + 2	7 + 2	6+2

The target of 91% for the best 8 sites not reached

6 Sites > 91% (target)

6+2 Sites > 82% (90% of target)

(in July 7)

(in July 7+2)

* BNL: LCG/gLite CE probed by SAM but not installed with the SL4 upgrade



Comparison with VO-Specific SAM Tests August 2007

	OPS	ALICE	ATLAS	CMS	LHCb
CERN-PROD	99%	42%	99%	99%	95%
FZK-LCG2	67%	35%	35%	95%	97%
IN2P3-CC	95%	43%	12%	99%	94%
INFN-T1	70%	14%	73%	15%	65%
NDGF-T1	88%	-	88%	-	-
RAL-LCG2	99%	85%	100%	100%	98%
SARA-MATRIX	86%	42%	86%	70%	90%
TRIUMF-LCG2	97%	-	94%	-	-
Taiwan-LCG2	83%	-	94%	97%	-
USCMS-FNAL-WC1	99%	-	-	54%	-
pic	94%	-	99%	100%	100%
BNL-LCG2	71%	-	66%	-	-

>=91%	>=82%	<82%
-------	-------	------

Average 8 best sites:
Average all sites:

Aug 94% Jul 93% Jun:87% May 94% Apr 92%
 Aug 88% Jul 89% Jun:80% May 89% Apr 89%



Comparison with VO-Specific SAM Tests September 2007 (until 24.9.2007/incomplete)

	OPS	ALICE	ATLAS	CMS	LHCb
CERN-PROD	100%	96%	100%	100%	95%
FZK-LCG2	92%	100%	53%	100%	91%
IN2P3-CC	64%	56%	7%	10%	96%
INFN-T1	77%	96%	85%	100%	69%
NDGF-T1	98%	-	94%	-	-
RAL-LCG2	88%	95%	100%	100%	96%
SARA-MATRIX	94%	96%	91%	66%	88%
TRIUMF-LCG2	96%	-	97%	-	-
Taiwan-LCG2	91%	-	96%	97%	-
USCMS-FNAL-WC1	92%	-	-	24%	-
pic	91%	-	100%	100%	92%
BNL-LCG2	91%	-	90%	-	-

>=91%	>=82%	<82%
-------	-------	------

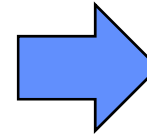


Job Efficiency

Job Efficiency by Site

August 2007

	>= 91%	>= 82%	< 82%
ASGC	82%	3504	4288
ALICE-AGENT	0%	0	0
ATLAS-GANGA	0%	0	0
ATLAS-PROD	79%	2907	3670
CMS-CRAB	97%	597	618
LCHb-PILOT	0%	0	0
BNL	0%	0	0
ALICE-AGENT	0%	0	0
ATLAS-GANGA	0%	0	0
ATLAS-PROD	0%	0	0
CMS-CRAB	0%	0	0
LCHb-PILOT	0%	0	0
CERN	92%	160814	175118
ALICE-AGENT	93%	45441	48629
ATLAS-GANGA	98%	2551	2598
ATLAS-PROD	89%	7077	7951
CMS-CRAB	82%	37856	46239
LCHb-PILOT	97%	67889	69701
CNAF	89%	23457	26389
ALICE-AGENT	90%	5487	6102
ATLAS-GANGA	97%	84	87
ATLAS-PROD	80%	4929	6177
CMS-CRAB	95%	2093	2193
LCHb-PILOT	92%	10864	11830



See

JE_Summary

In the Agenda

WLCG - Sites Reliability and Job Efficiency

**August
2007**

Site	OPS	ALICE		ATLAS			CMS		LHCb		GOCDB ID
	SAM	SAM	AGENT	SAM	GANGA	PROD	SAM	CRAB	SAM	PILOT	
ASGC	83%	-	-	94%	-	79%	97%	97%	-	-	Taiwan-LCG2
BNL	71%	-	-	66%	-	-	-	-	-	-	BNL-LCG2
CERN	99%	42%	93%	99%	98%	89%	99%	82%	95%	97%	CERN-PROD
CNAF	70%	14%	90%	73%	97%	80%	15%	95%	65%	92%	INFN-T1
FNAL	99%	-	-	-	-	-	54%	91%	-	-	USCMS-FNAL-WC1
FZK	67%	35%	87%	35%	94%	83%	95%	68%	97%	99%	FZK-LCG2
IN2P3	95%	43%	100%	12%	100%	88%	99%	98%	94%	98%	IN2P3-CC
NDGF	88%	-	-	88%	-	90%	-	-	-	-	NDGF-T1
NIKHEF	86%	42%	7%	86%	100%	78%	70%	-	90%	6%	SARA-MATRIX
PIC	94%	-	-	99%	100%	79%	100%	96%	100%	90%	pic
RAL	99%	85%	97%	100%	99%	77%	100%	89%	98%	91%	RAL-LCG2
TRIUMF	97%	-	-	94%	26%	87%	-	-	-	-	TRIUMF-LCG2

>=91%		>=82%			<82%
-------	--	-------	--	--	------