

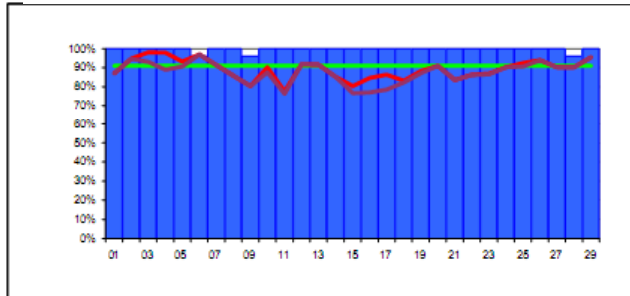


Reliability Reports – September 2007

http://lcg.web.cern.ch/LCG/MB/availability/site_reliability.pdf

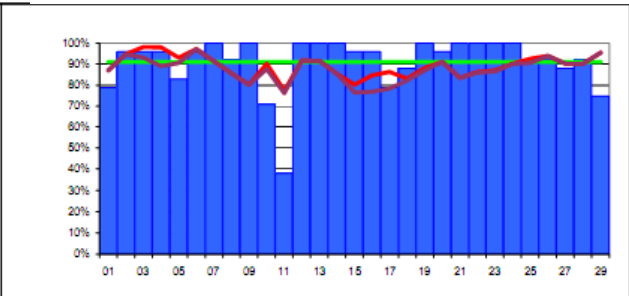
CERN

100%



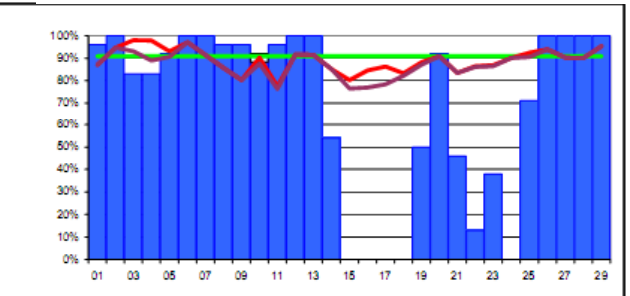
GridKa/FZK

91%



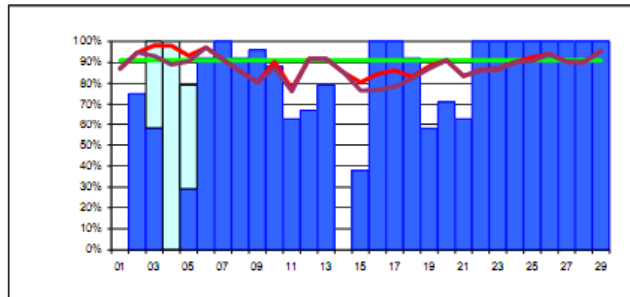
IN2P3

70%



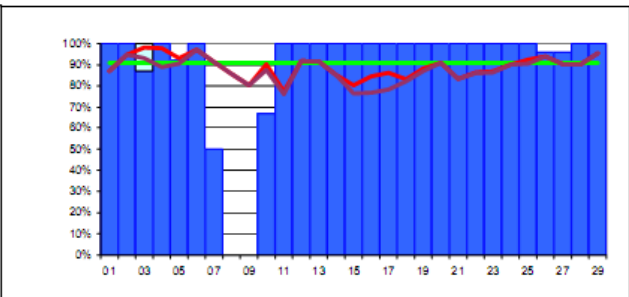
INFN/CNAF

80%



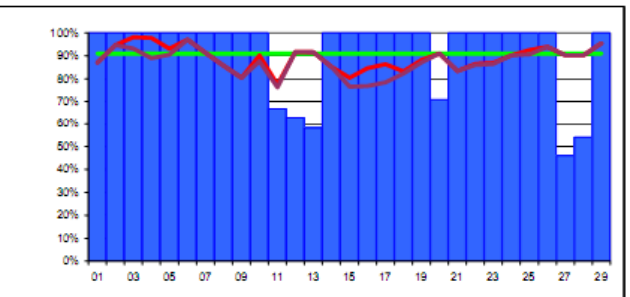
RAL

90%



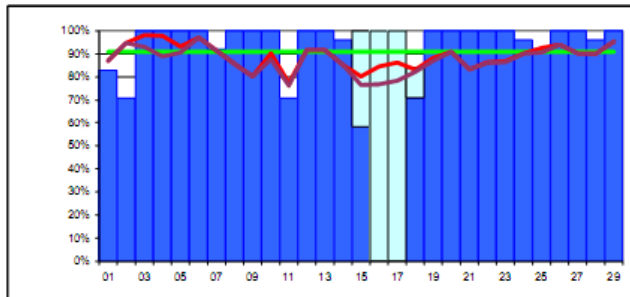
SARA-NIKHEF

92%



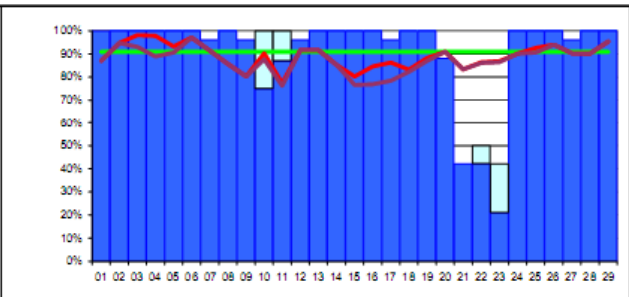
TRIUMF

96%



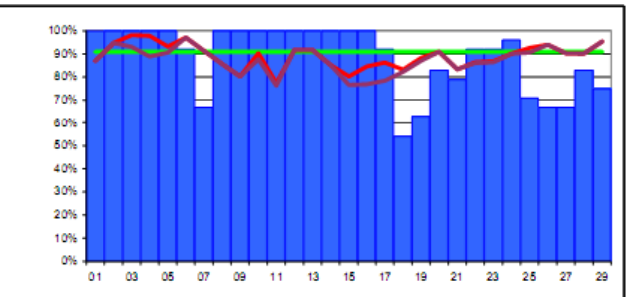
ASGC

93%



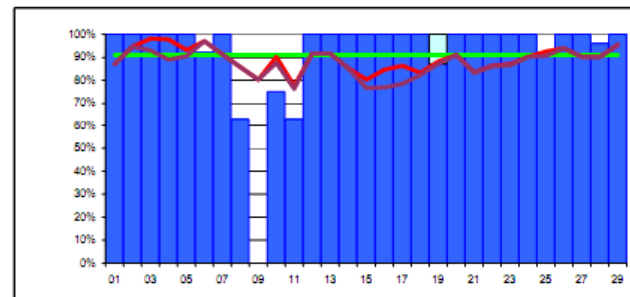
FNAL

89%



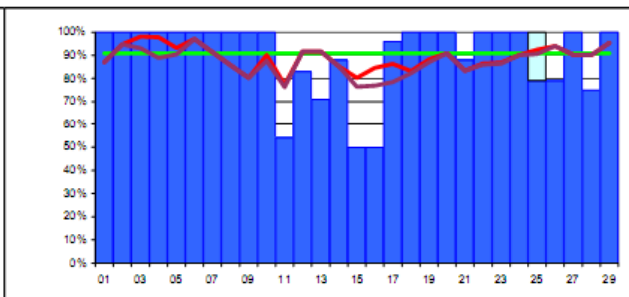
PIC

93%



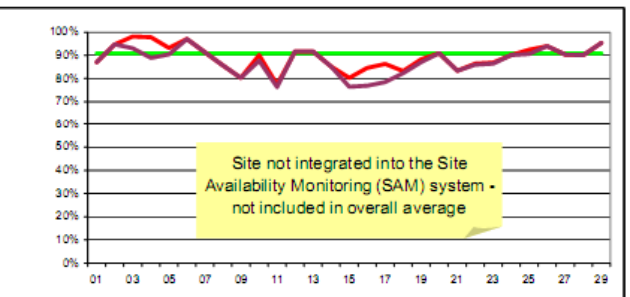
BNL

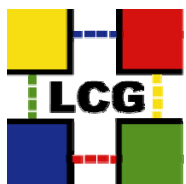
91%



NDGF

n/a





January 07 to September 07

Site	Jan 07	Feb 07	Mar 07	Apr 07	May 07	Jun 07	Jul 07	Aug 07	Sept 07
CERN	99	91	97	96	90	96	95	99	100
GridKa/FZK	85	90	75	79	79	48	75	67	91
IN2P3	96	74	58	95	94	88	94	95	70
INFN/CNAF	75	93	76	93	87	67	82	70	80
RAL	80	82	80	87	87	87	98	99	90
SARA-NIKHEF	93	83	47	92	99	75	92	86	92
TRIUMF	79	88	70	73	95	95	97	97	95
ASGC	96	97	95	92	98	80	83	83	93
FNAL	84	67	90	85	77	77	92	99	89
PIC	86	86	96	95	77	79	96	94	93
BNL	90	57*	6*	89	98	94	75	71	91
NDGF	n/a	n/a	n/a	n/a	n/a	n/a	n/a	n/a	n/a
Reliability Target	88	88	88	88	88	91	91	91	91
Target + 90% target	5 + 5	6 + 3	4 + 1	7 + 3	6 + 3	3 + 2	7 + 2	6+2	7+2

Average 8 best sites:
Average all sites:

Sept 93% Aug 94% Jul 93% Jun:87% May 94% Apr 92%
Sept 89% Aug 88% Jul 89% Jun:80% May 89% Apr 89%

* BNL: LCG/gLite CE probed by SAM but not installed with the SL4 upgrade



Comparison with VO-Specific SAM Tests September 2007

	OPS	ALICE	ATLAS	CMS	LHCb
CERN-PROD	100%	97%	100%	100%	96%
FZK-LCG2	91%	95%	62%	99%	91%
IN2P3-CC	70%	45%	26%	8%	97%
INFN-T1	80%	97%	85%	100%	66%
NDGF-T1	97%	0%	76%	0%	-
RAL-LCG2	90%	96%	100%	100%	97%
SARA-MATRIX	92%	96%	92%	53%	90%
TRIUMF-LCG2	95%	-	98%	-	-
Taiwan-LCG2	93%	-	98%	95%	-
USCMS-FNAL-WC1	89%	-	-	38%	-
pic	93%	-	100%	100%	93%
BNL-LCG2	91%	-	72%	-	-

>=91%	>=82%	<82%
-------	-------	------

Description	SITE: Problem → Solution
SRM/MSS/DB	<p>BNL: HPSS unstable several times after upgrade → Restarted and reconfigured HPSS</p> <p>BNL: Wrong mapping of dCache accounts, some dCache pool offline</p> <p>CNAF: CASTOR instabilities all end-points affected</p> <p>CNAF: Problems with the CASTOR LSF license server</p> <p>FZK: dCache gridftp doors problems → Restarted several times</p> <p>FZK: SRM lock-up because of memory problems → Investigated</p> <p>IN2P3: dCache instabilities with non-LHC VOs but affected the score of the CEs.</p> <p>PIC: dCache SRM hanging, all transfers failed → SRM node restarted</p> <p>SARA-NIKHEF: dCache authentication error</p> <p>TRIUMF: Problems with SRM and gridftp, missing host certificate</p>
Other Services	<p>BNL: OSG gatekeeper down, Pool Mgr overloaded and restarted</p> <p>FZK: FTS DB non responsive → DB Restarted</p> <p>IN2P3: AFS problems for several days → AFS restarted</p> <p>TRIUMF: LFC authentication problems → Restarted</p>
Operational Issues	<p>ASGC: Power maintenance and network problems</p> <p>ASGC: SAM tests changed DN but the sites did not change the local mapping</p> <p>BNL: Power failure and network maintenance problem</p> <p>CNAF: Cooling problems for several days</p> <p>PIC: Network problems in a couple of occasions</p> <p>RAL: Network problems</p> <p>RAL: Certificate of disk server expired for several days</p> <p>SARA-NIKHEF: Fabrics management uninstalled some RPMs that were needed</p> <p>SARA-NIKHEF: Power outage cause network problems</p> <p>TRIUMF: SRM host certificate obtained but not installed → Certificate procedures need work</p>
Tools, SAM, GOCDB	<p>FNAL: Claim that the SAM tests are incorrect, but is a change in the site configuration</p>