

Summary of the issues on the access points in LHC UJs

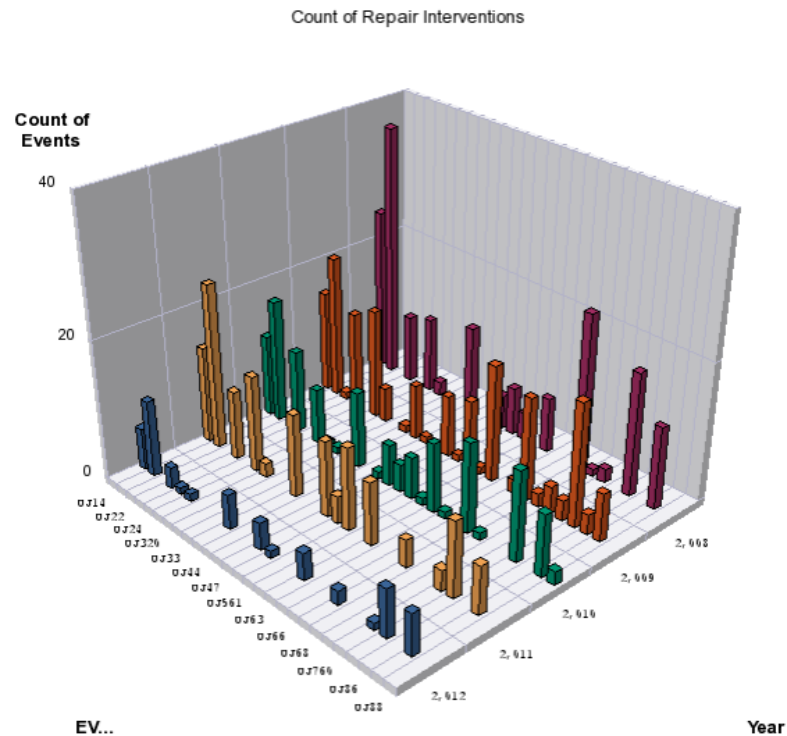
RADWG - 23 August 2012

Rui Nunes

Corrective actions since 2008 by UJ

R2E in UJs analysis : All ODMs of corrective nature since 2008 up to 22/08/2012 11:09

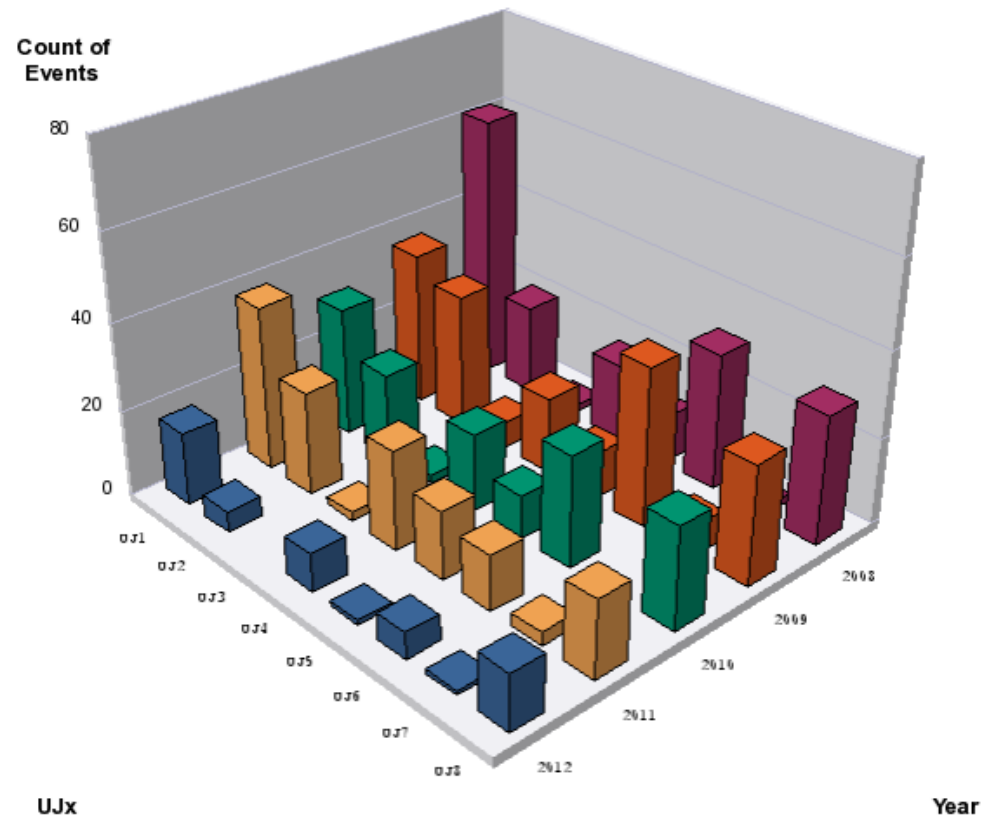
		2008	2009	2010	2011	2012	Sum:
UJ1	UJ14	24	15	12	14	6	71
	UJ16	37	21	18	24	11	111
UJ2	UJ22		1				1
	UJ23	10	14	12	10	3	49
	UJ24					1	1
	UJ27	11	16	8	14	1	50
UJ3	UJ320	2	5	1	2		10
	UJ321			1			1
	UJ33		1				1
UJ4	UJ43	13	8	11	12	5	49
	UJ44		1				1
	UJ46			1			1
	UJ47	5	9	6	11	4	35
UJ5	UJ56	7	1	4	4	1	17
	UJ561	4	10	6	12		32
UJ6	UJ62		1	1			2
	UJ63	8	17	10	9	4	48
	UJ64			1			1
	UJ66		2				2
	UJ67	23	15	13	4	2	57
	UJ68	1	2	1			4
UJ7	UJ76	2	4				6
	UJ760		3		3	1	7
UJ8	UJ83	18	18	13	11	7	67
	UJ86		3				3
	UJ87	12	7	9	7	6	41
	UJ88			2			2
	Sum:	177	174	130	137	52	



Corrective actions since 2008 by UJ (Grouped by LHC point)

R2E in UJs analysis : All ODMs of corrective nature since 2008 up to 22/08/2012 11:09 - Grouping by LHC point UJx

	2008	2009	2010	2011	2012	Sum:
UJ1	61	36	30	38	17	182
UJ2	21	31	20	24	5	101
UJ3	2	6	2	2		12
UJ4	18	18	18	23	9	86
UJ5	11	11	10	16	1	49
UJ6	32	37	26	13	6	114
UJ7	2	7		3	1	13
UJ8	30	28	24	18	13	113
Sum:	177	174	130	137	52	670



Preliminary (absence of) conclusion

- Given the number of failures and corrective actions on the access control equipment located in the Ujs
 - There is no visible trend of increasing errors due to R2E.
- However the available statistical data is not designed to search for this type of events.
- The decision to relocate the access points in UJ14 & UJ16 in LS1 is a good conservative measure and should be executed.
- We shall introduce fault codes to track R2E Possible Events for future reference