

CMS Status

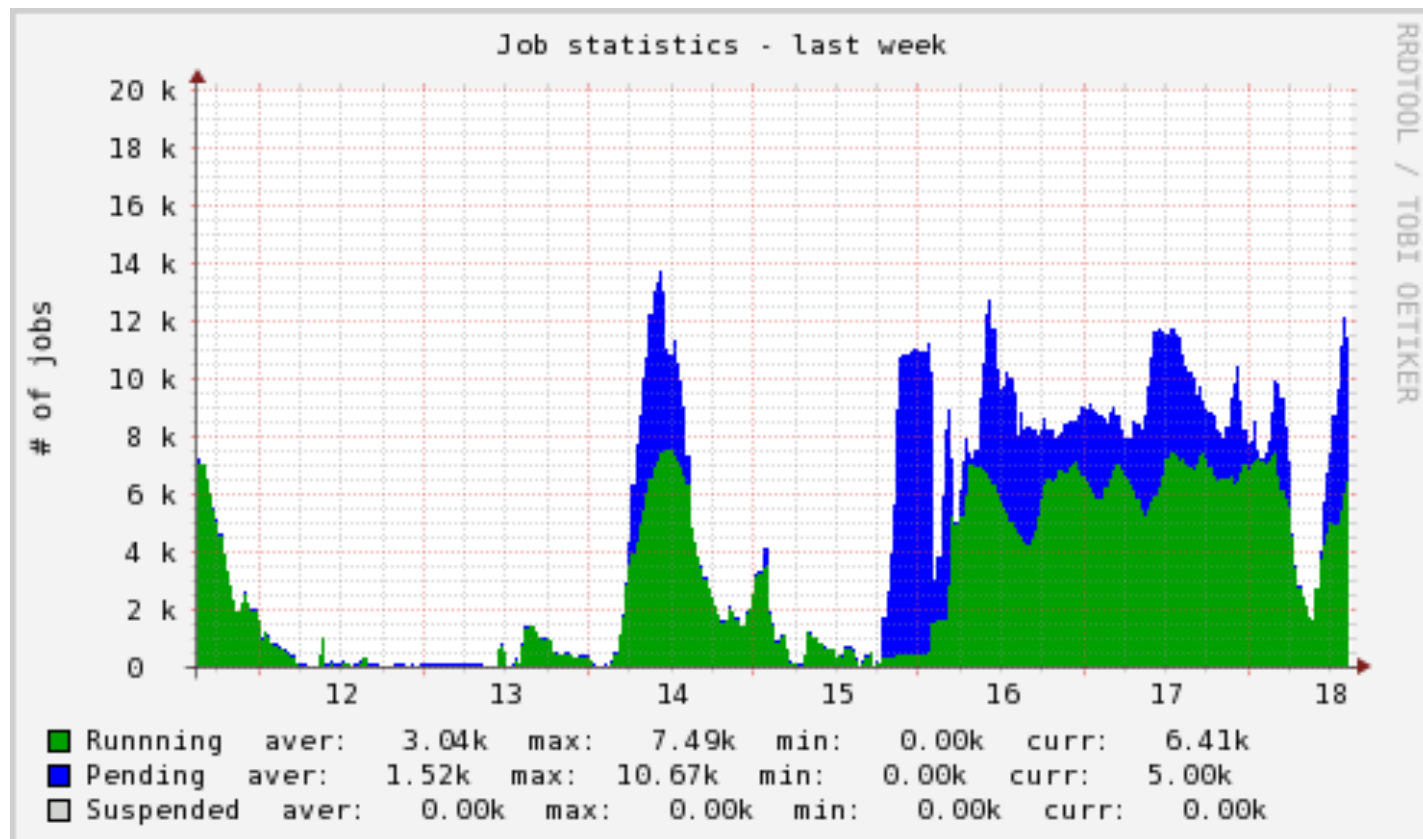
LHCC

General Status

- Computing has performed generally well
 - Data complexity is high and instantaneous luminosity is high, we will survive the year
 - Volumes of data and simulation are large
 - Longer tails than we would like on data reprocessing
 - Overall simulation production speed has been good
- Analysis activities are succeeding
 - Squeezing into the Tier-2 disk space
 - Trying to move the collaboration to better use the popularity information to make reasonable choices of what to clean up
 - Moving the next generation of analysis tools into integration testing
 - Promising initial results

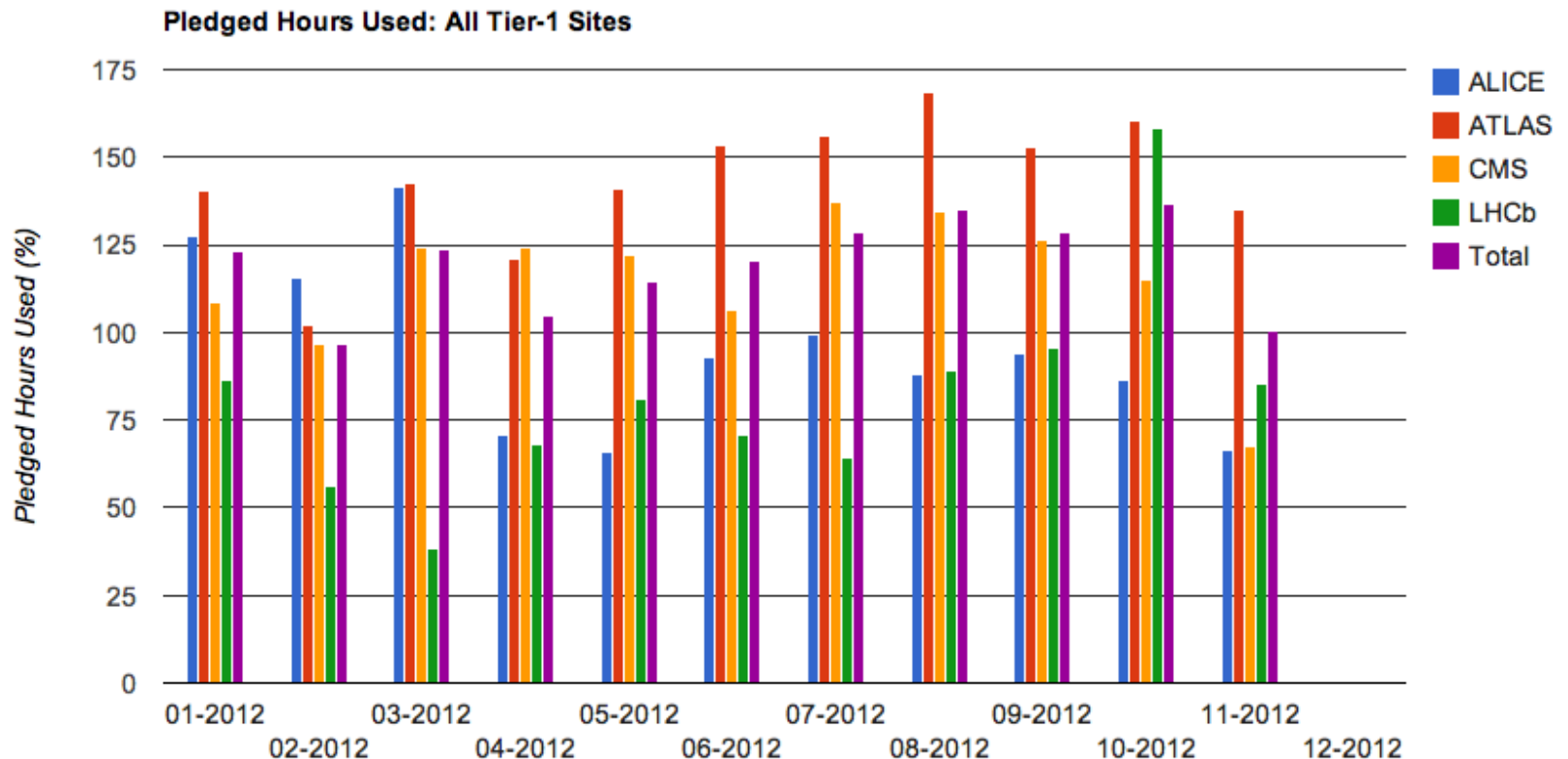
Prompt Reconstruction

- At 7E33 CMS starts at 600-700Hz of prompt reconstruction that drops during the fill
 - Combined with repacking of the parked data this consumes all the Tier-0 resources



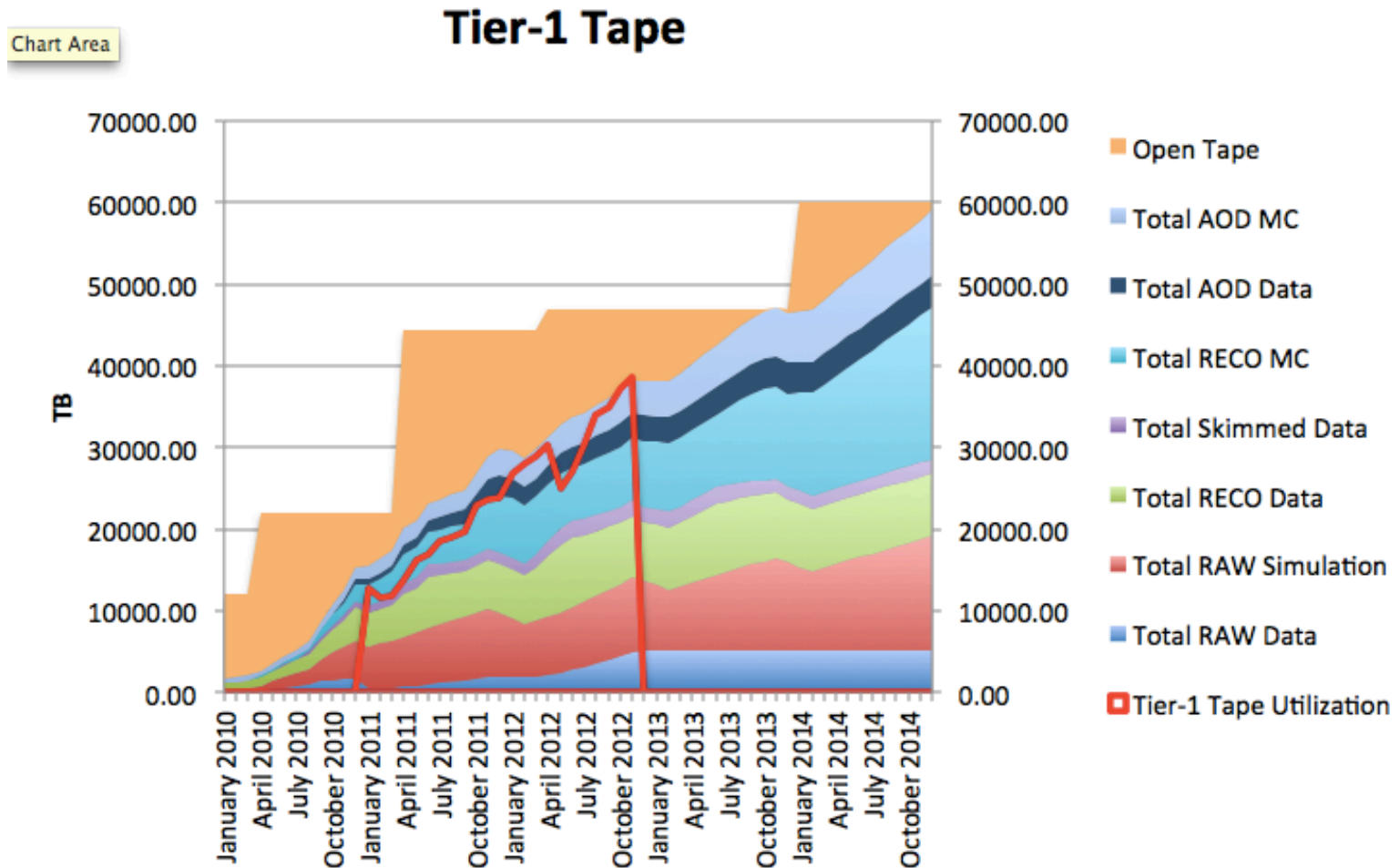
Tier-1

- Utilization of Tier-1s is high
 - Averaging 115% of pledged capacity used over the last 11 months



Storage Use

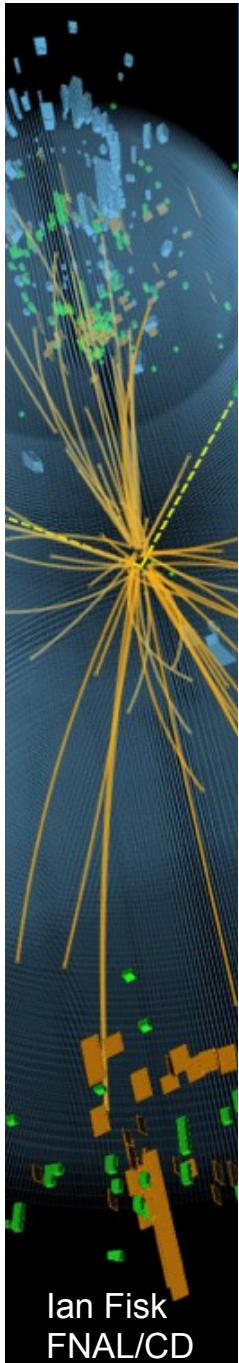
- Total Tier-1 Tape is tracking nicely with the planning



Ian Fisk
FNAL/CD

Parked Data

- 2.2B Parked data events have been collected in 2012
 - Currently recording data at 700Hz of parked data averaged over the fill
- Began reconstructing parked data samples that didn't require updated calibrations
 - MultiJet1Parked is nearly complete for Run2012B and C, D will start shortly
 - 360M events in this Primary Dataset
 - Many more to follow with new calibrations during the first half of 2013

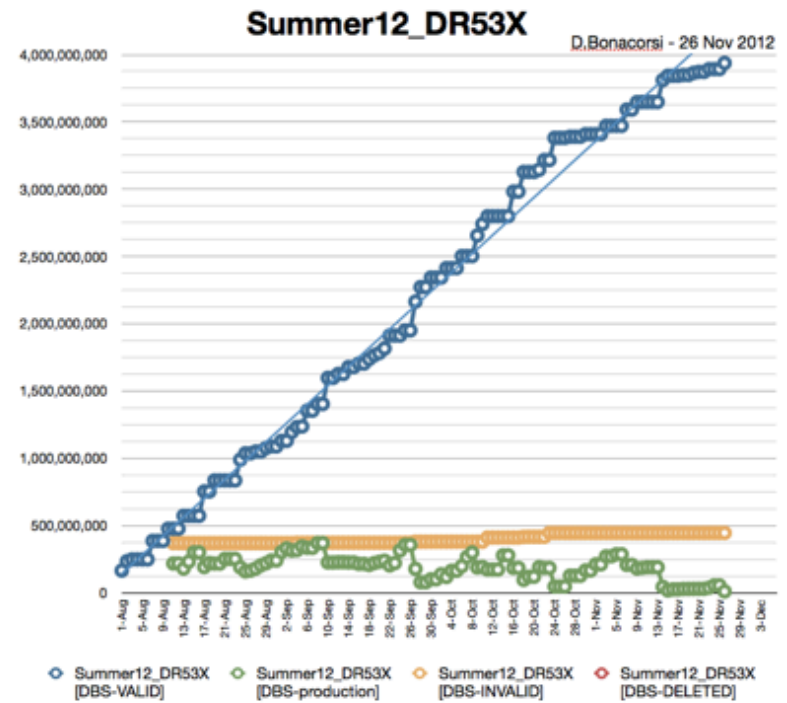
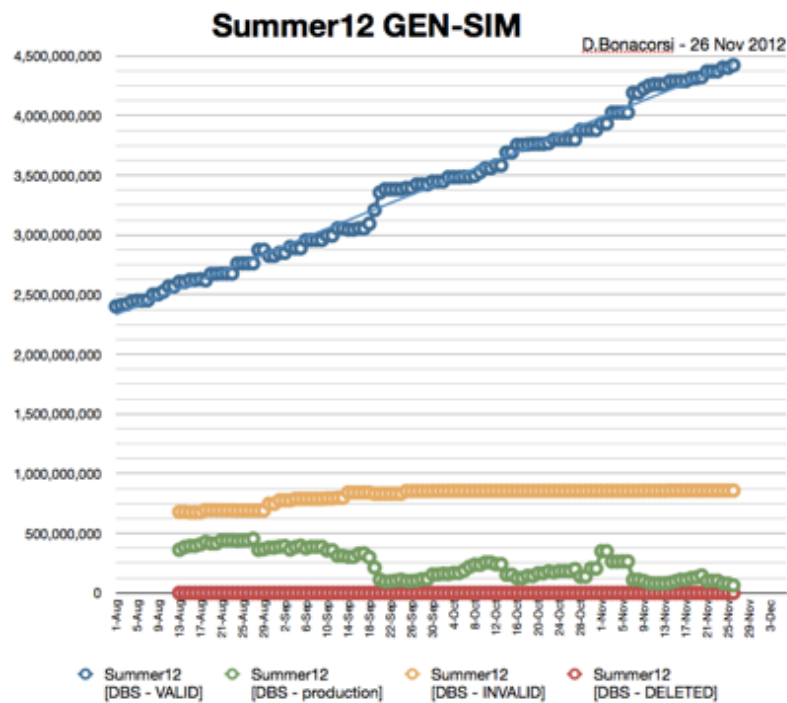


Reprocessing Plans

- We will begin reprocessing 2012 data for conferences with improved calibrations as soon as final calibrations are available
 - We will write out only AOD for as many samples as possible to make efficient use of the storage space
 - AOD is used for the bulk of the analysis
- Also in the middle of a clean up campaign
 - Deleting unused processing passes and underused data formats to free storage space for new reprocessing passes

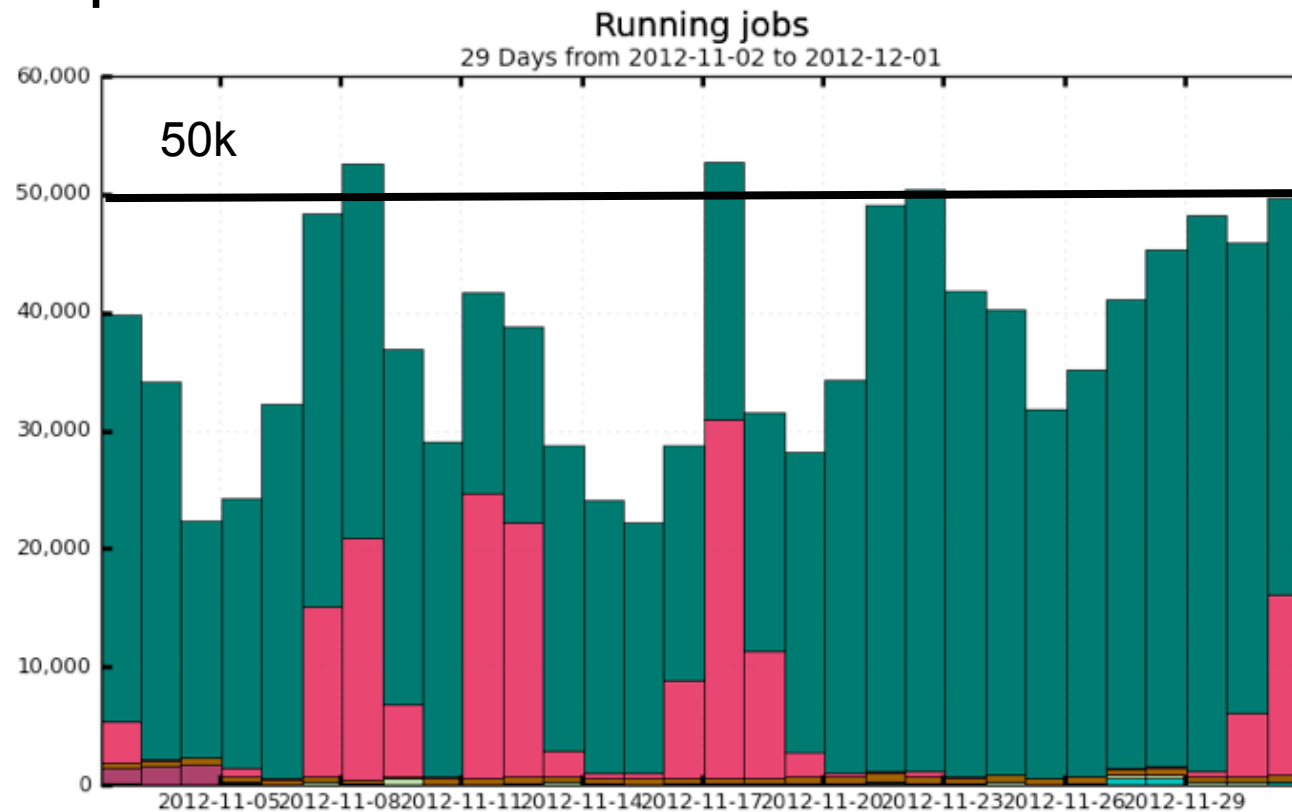
Simulation

- Simulation Production is roughly what we anticipated
 - ~400M/month simulated events
 - ~1B/month reconstructed events



Analysis

- Activity remains high for analysis taken over from production in the last month



Maximum: 52,668 , Minimum: 0.00 , Average: 36,435 , Current: 49,691

Ian Fisk
FNAL/CD