

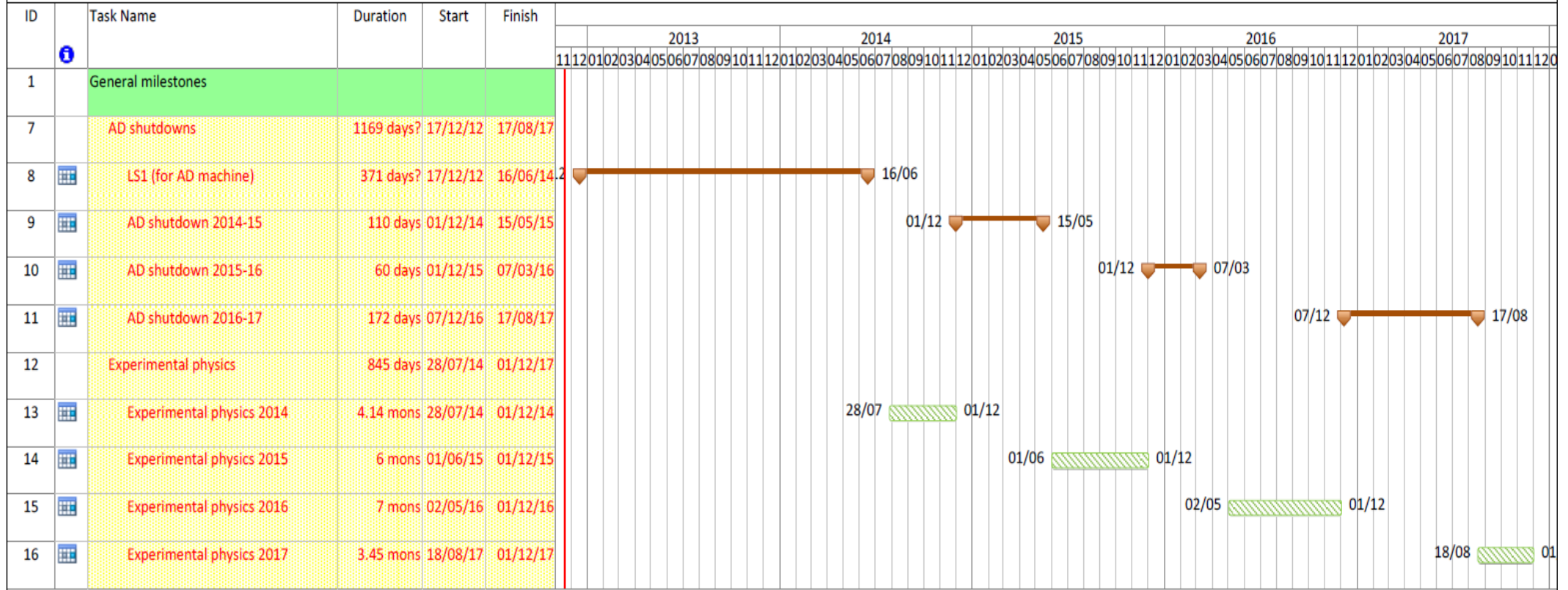


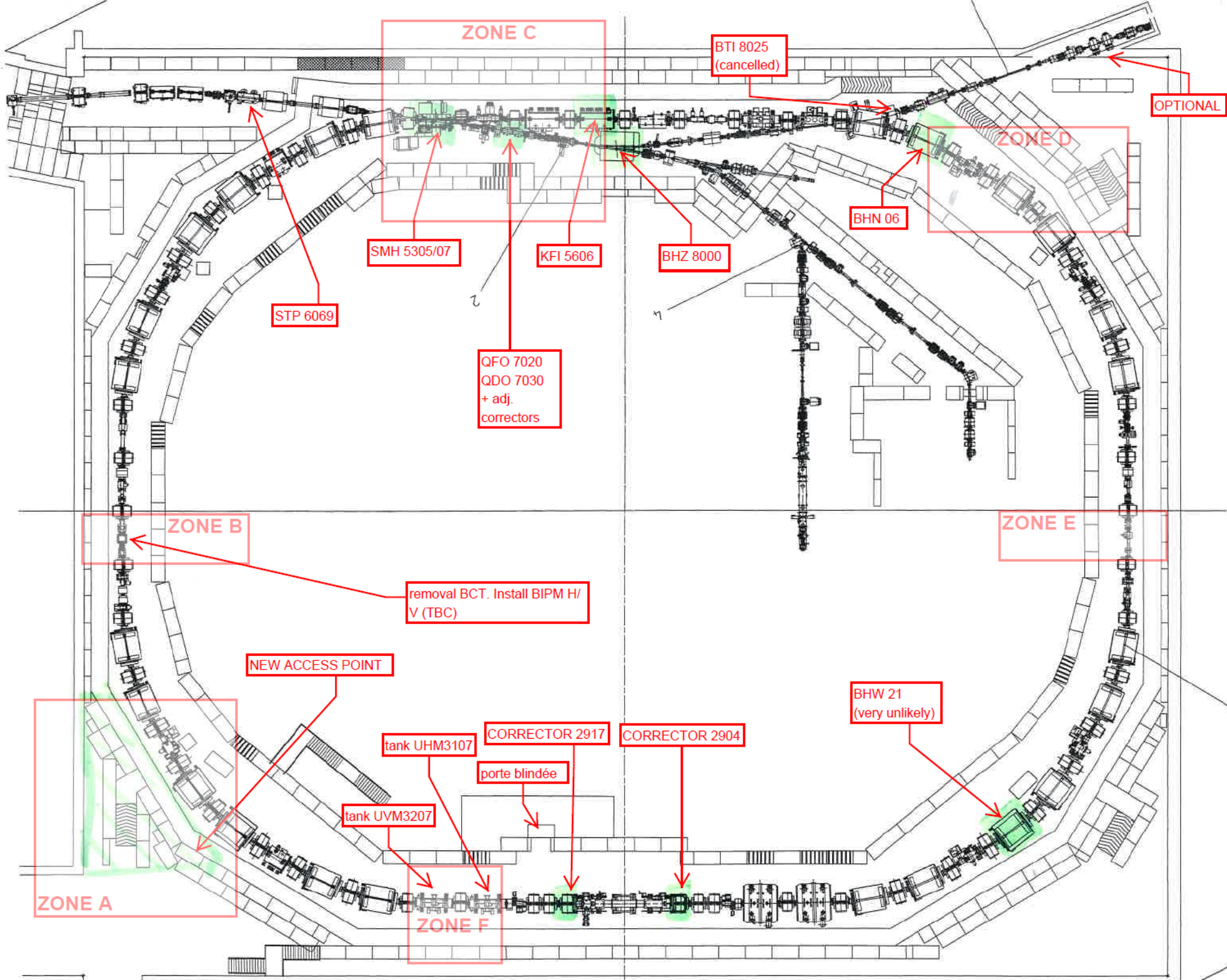
ELENA PROJECT

General planning review

N. GILBERT

ELENA Project - General Reference Planning





ZONE C

BTI 8025
(cancelled)

OPTIONAL

ZONE D

SMH 5305/07

KFI 5606

BHZ 8000

BHN 06

STP 6069

QFO 7020
QDO 7030
+ adj.
correctors

ZONE B

ZONE E

removal BCT. Install BIPM H/
V (TBC)

NEW ACCESS POINT

tank UHM3107

CORRECTOR 2917

CORRECTOR 2904

BHW 21
(very unlikely)

porte blindée

tank UVM3207

ZONE A

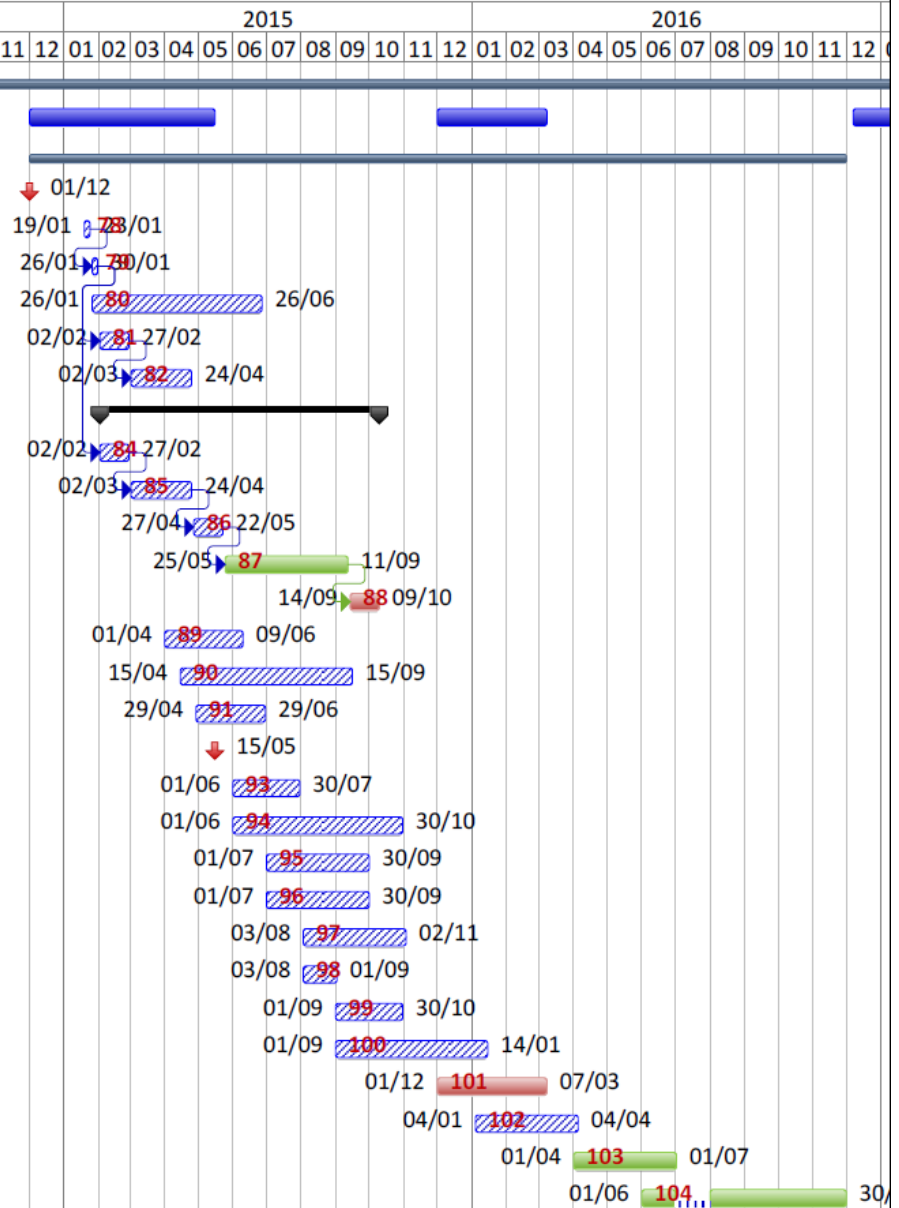
ZONE F

Machines PSB - AD & LEIR : Planning LS1 2012/2014

Task Name	In charge	Group	ec '12												Jan '13												Feb '13												Mar '13												Apr '13												May '13												Jun '13												Jul '13												Aug '13												Sep '13												Oct '13												Nov '13												Dec '13												Ja											
			50	51	52	1	2	3	4	5	6	7	8	9	10	11	12	13	14	15	16	17	18	19	20	21	22	23	24	25	26	27	28	29	30	31	32	33	34	35	36	37	38	39	40	41	42	43	44	45	46	47	48	49	50	51	52	1	2																																																																																																															
AD-ring																																																																																																																																																																										
PPS : new access point	E. Sanchez	GS/ASE																																																																																																																																																																								
PPS : modify RP shielding at AD access point	E. Sanchez	GS/ASE	07/01 → 205 → 01/02																																																																																																																																																																							
Dismantling acces point D321	B. Morand	GS/ASE	14/01 → 205 → 01/02																																																																																																																																																																							
General magnets activities	A. Newborough	TE/MSC																																																																																																																																																																								
Install new orbit correctors 2904/2917	A. Newborough	TE/MSC	11/03 → 213 → 22/03																																																																																																																																																																							
Heavy AD activities (mainly EN/HE !!)																																																																																																																																																																										
Elec. disconnection access point (Zone A)	D. Chapuis	GS/ASE	07/01 → 242 → 18/01																																																																																																																																																																							
Opening shielded door	Y. Bernard	EN/HE	07/01 → 243 → 01/02																																																																																																																																																																							
Reshuffling new access point	Y. Bernard	EN/HE	21/01 → 244 → 01/02																																																																																																																																																																							
Removal / evacuation equipment on roof	Y. Bernard	EN/HE	04/02 → 248 → 02/03																																																																																																																																																																							
Opening / evacuation shielding Zone C	Y. Bernard	EN/HE	11/02 → 245 → 02/03																																																																																																																																																																							
Opening / evacuation shielding Zone F	Y. Bernard	EN/HE	18/02 → 242 → 02/03																																																																																																																																																																							
Vacuum + elec. disconnection Zones C + D	A. Sinturel	TE/VSC	18/02 → 242 → 02/03																																																																																																																																																																							
Removal equipment Zone C, incl. BHZ8000	Y. Bernard	EN/HE	25/02 → 249 → 08/03																																																																																																																																																																							
Closing shielding Zone F	Y. Bernard	EN/HE	29/04 → 250 → 03/05																																																																																																																																																																							
Reinstall equipment Zone C	Y. Bernard	EN/HE	25/02 → 251 → 02/03																																																																																																																																																																							
Exchange SMH53 (for Th. Masson)	Y. Bernard	EN/HE	06/05 → 250 → 03/05																																																																																																																																																																							
Reinstall KFI55/56 tanks	Y. Bernard	EN/HE	15/07 → 254 → 26/07																																																																																																																																																																							
Install new quads 7020/30	A. Newborough	TE/MSC	15/07 → 255 → 07/08																																																																																																																																																																							
Install new quads 7020/30	Y. Bernard	EN/HE	29/07 → 256 → 09/08																																																																																																																																																																							
Install new correctors 7042/43	A. Newborough	TE/MSC	29/07 → 257 → 07/08																																																																																																																																																																							
Install new correctors 7042/43	Y. Bernard	EN/HE	02/12 → 258 → 12/12																																																																																																																																																																							
Closing shielding Zone C	Y. Bernard	EN/HE	09/12 → 259 → 13/12																																																																																																																																																																							
Reinstall equipment on roof (storage)	Y. Bernard	EN/HE																																																																																																																																																																								
Repair BHN06	A. Newborough	TE/MSC	29/04 → 263 → 13/05																																																																																																																																																																							
Clean-up ATRAP area by exp. team	S. Ettenauer	PH/UAD	13/05 → 264 → 24/05																																																																																																																																																																							
Opening / evacuation shielding Zone D	Y. Bernard	EN/HE	27/05 → 263 → 05/06																																																																																																																																																																							
Removal BHN06 (if spare coil !)	Y. Bernard	EN/HE	03/06 → 266 → 02/08																																																																																																																																																																							
Renewal of one complete magnet (BHN06)	A. Newborough	TE/MSC	05/08 → 267 → 09/08																																																																																																																																																																							
Reinstall BHN06	Y. Bernard	EN/HE	12/08 → 268 → 08/08																																																																																																																																																																							
Closing shielding Zone D	Y. Bernard	EN/HE																																																																																																																																																																								
Other activities			01/04 → 269 → 03/04																																																																																																																																																																							
Upgrade beam stopper STP 6069 in situ	J. Lendaro	EN/STI																																																																																																																																																																								

ELENA Project - General Reference Planning

ID	Task Name	Duration	In charge	Group	2015												2016																	
					10	11	12	01	02	03	04	05	06	07	08	09	10	11	12	01	02	03	04	05	06	07	08	09	10	11	12			
1	General milestones																																	
7	AD shutdowns	1169 days?		_key date																														
76	Elena machine installation																																	
77	AD stop / re-opening	0 days		_key date																														
78	Survey marking (incl. Gbar and H- source)	5 days	T. Dobers	BE/ABP																														
79	Install surrounding concrete shielding	5 days	S. Pelletier	EN/HE																														
80	Equip control racks	5 mons																																
81	Cable trays / lightning / AC cabling	20 days	R. Necca	EN/EL																														
82	Install cooling network	40 days	St. Moccia	EN/CV																														
83	H- source	180 days	D. Kuchler	BE/ABP																														
84	Installation source	20 days	D. Kuchler	BE/ABP																														
85	Cabling and Control	40 days	D. Kuchler	BE/ABP																														
86	Add vacuum / test line	20 days	D. Kuchler	BE/ABP																														
87	Commissioning source	80 days	D. Kuchler	BE/ABP																														
88	Connection to ELENA machine	20 days	D. Kuchler	BE/ABP																														
89	Magnet installation	50 days	Th. Zickler	TE/MSC																														
90	Cable-laying campaign	5 mons	P. Lelong	EN/EL																														
91	Install kickers	2 mons	L. Sermeus	TE/ABT																														
92	AD closing / restart	0 days		_key date																														
93	Install septa	2 mons	J. Borburgh	TE/ABT																														
94	Install power converters	5 mons	G. Simonet	TE/EPC																														
95	Install RF	3 mons	M.E. Angoletta	BE/RF																														
96	Install e-cooling	3 mons	G. Tranquille	BE/BI																														
97	Cable connections & Interlocks	3 mons	P. Lelong	EN/EL																														
98	Install WIC	1 mon	Y. Bastian	TE/MPE																														
99	Install instrumentation	2 mons	G. Tranquille	BE/BI																														
100	Vacuum system + ejection towards Gbar	4 mons	R. Kersevan	TE/VSC																														
101	Connection AD-ring to ELENA	60 days																																
102	Various (connection to cooling; access door, ...)	3 mons																																
103	Commissioning ELENA (H-) (100 keV -> 5.3 Mev)	3 mons	T. Eriksson	BE/OP																														
104	Commissioning ELENA (p-) (a few %)	5 mons	T. Eriksson	BE/OP																														



ELENA Project - General Reference Planning

