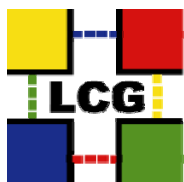




Reliability Reports – October 2007

http://lcg.web.cern.ch/LCG/MB/availability/site_reliability.pdf

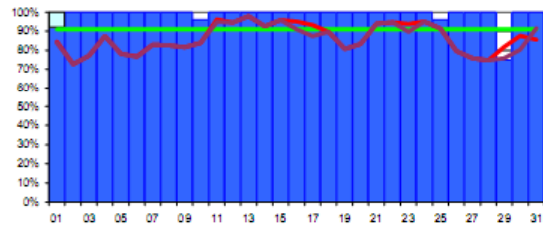


Daily Data – October 2007

	CERN-PROD	FZK-LCG2	IN2P3-CC	INFN-T1	RAL-LCG2	SARA-MATRIX	TRIUMF-LCG2	Taiwan-LCG2	USCMS-FNAL WC1	PIC	BNL-LCG2	average reliabilities	target	NDGF
1	100%	88%	96%	96%	96%	92%	96%	54%	100%	96%	100%	85%	91%	0%
2	100%	100%	71%	100%	100%	100%	100%	0%	0%	100%	100%	73%	91%	0%
3	100%	96%	54%	100%	100%	88%	100%	0%	50%	100%	96%	77%	91%	42%
4	100%	92%	96%	100%	100%	100%	96%	0%	83%	100%	83%	88%	91%	100%
5	100%	67%	88%	92%	88%	92%	83%	0%	96%	92%	38%	78%	91%	100%
6	100%	20%	96%	100%	100%	100%	100%	0%	100%	100%	4%	77%	91%	100%
7	100%	54%	100%	100%	100%	100%	83%	0%	92%	100%	83%	83%	91%	83%
8	100%	75%	100%	79%	100%	100%	79%	0%	100%	100%	88%	83%	91%	71%
9	100%	63%	100%	100%	100%	100%	54%	0%	79%	100%	83%	82%	91%	100%
10	96%	96%	92%	92%	92%	83%	96%	46%	46%	96%	83%	84%	91%	88%
11	100%	100%	92%	95%	100%	96%	92%	96%	100%	96%	88%	96%	91%	100%
12	100%	71%	96%	100%	79%	96%	92%	100%	100%	100%	100%	95%	91%	100%
13	100%	83%	100%	100%	96%	100%	96%	100%	100%	100%	100%	98%	91%	100%
14	100%	42%	100%	100%	71%	100%	100%	100%	100%	100%	100%	93%	91%	100%
15	100%	71%	96%	100%	96%	100%	100%	100%	96%	100%	92%	96%	91%	100%
16	100%	83%	96%	100%	96%	100%	71%	100%	100%	100%	100%	95%	91%	96%
17	100%	96%	83%	100%	100%	83%	58%	100%	100%	100%	100%	93%	91%	100%
18	100%	46%	71%	100%	96%	100%	100%	100%	75%	100%	88%	90%	91%	100%
19	100%	96%	58%	100%	67%	46%	88%	100%	13%	100%	100%	81%	91%	100%
20	100%	38%	100%	100%	100%	58%	96%	100%	13%	100%	96%	83%	91%	100%
21	100%	75%	100%	100%	100%	100%	96%	100%	58%	100%	100%	94%	91%	100%
22	100%	79%	96%	100%	100%	100%	92%	100%	75%	100%	96%	95%	91%	100%
23	100%	88%	100%	96%	100%	79%	100%	100%	92%	100%	71%	94%	91%	100%
24	100%	75%	100%	100%	96%	100%	92%	100%	83%	96%	100%	95%	91%	100%
25	96%	75%	67%	100%	100%	100%	88%	100%	75%	96%	100%	91%	91%	100%
26	100%	50%	63%	75%	88%	92%	100%	0%	92%	96%	100%	80%	91%	100%
27	100%	71%	100%	100%	100%	92%	100%	0%	17%	63%	67%	76%	91%	100%
28	100%	79%	100%	100%	100%	25%	92%	0%	54%	54%	92%	75%	91%	100%
29	75%	92%	96%	100%	100%	63%	88%	0%	71%	100%	96%	82%	91%	100%
30	100%	96%	96%	96%	96%	92%	96%	0%	92%	100%	100%	88%	91%	
31	100%	88%	96%	100%	100%	79%	96%	0%	83%	100%	100%	86%	91%	
reliability	99%	76%	90%	97%	95%	89%	91%	51%	75%	96%	89%	86%	91%	89%

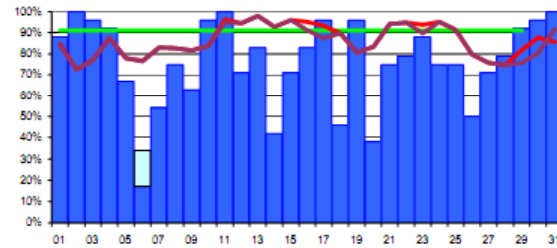
CERN

99%



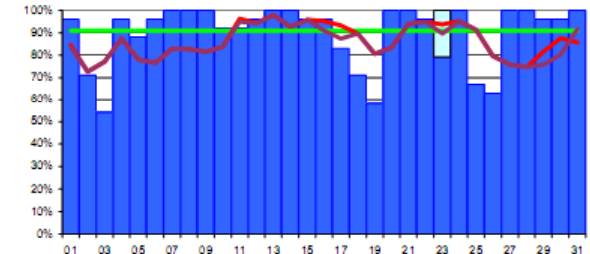
DE-KIT (GridKa/FZK)

76%



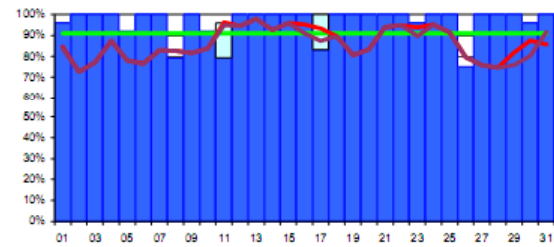
FR-CCIN2P3

90%



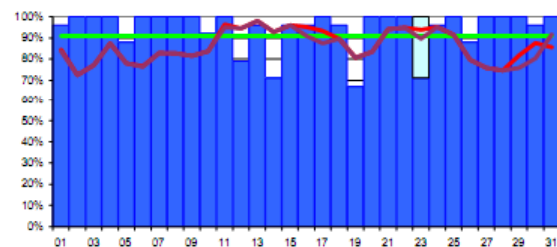
IT-INFN-CNAF

97%



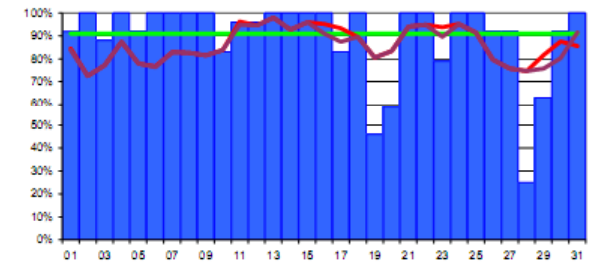
UK-T1-RAL

95%



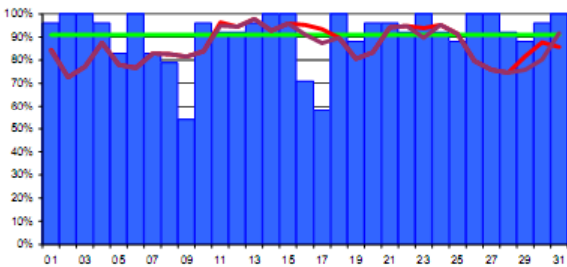
NL-T1 (SARA-NIKHEF)

89%



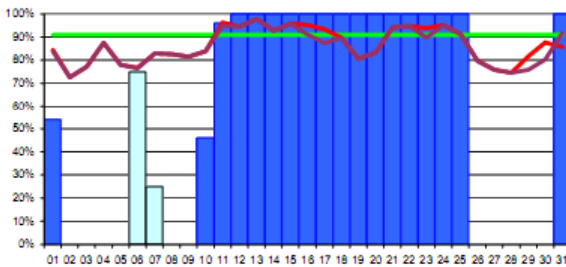
CA-TRIUMF

91%



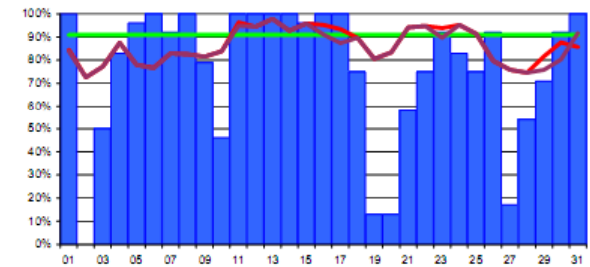
TW-ASGC

51%



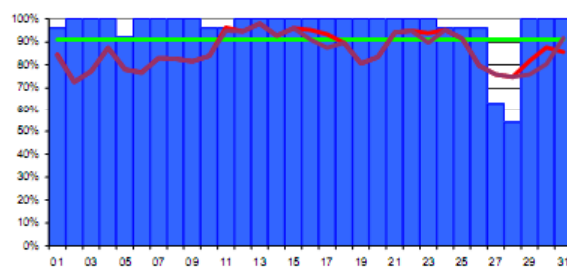
US-FNAL-CMS

75%



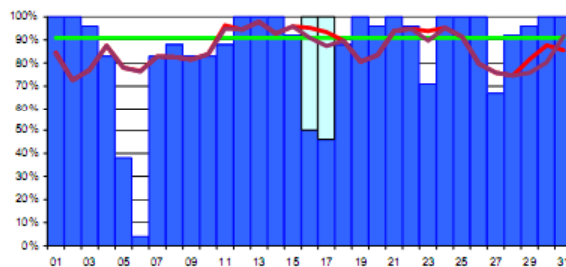
ES-PIC

96%



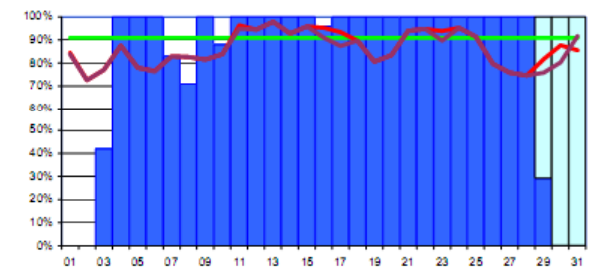
US-T1-BNL

89%



NDGF

89%





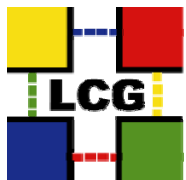
Reliability January - October 2007

Site	Jan 07	Feb 07	Mar 07	Apr 07	May 07	Jun 07	Jul 07	Aug 07	Sept 07	Oct 07
CERN	99	91	97	96	90	96	95	99	100	99
DE-KIT (FZK)	85	90	75	79	79	48	75	67	91	76
FR-CCIN2P3	96	74	58	95	94	88	94	95	70	90
IT-INFN-CNAF	75	93	76	93	87	67	82	70	80	97
UK-T1-RAL	80	82	80	87	87	87	98	99	90	95
NL-T1(NIKHEF)	93	83	47	92	99	75	92	86	92	89
CA-TRIUMF	79	88	70	73	95	95	97	97	95	91
TW-ASGC	96	97	95	92	98	80	83	83	93	51
US-FNAL-CMS	84	67	90	85	77	77	92	99	89	75
ES-PIC	86	86	96	95	77	79	96	94	93	96
US-T1-BNL	90	57*	6*	89	98	94	75	71	91	89
NDGF	n/a	n/a	n/a	n/a	n/a	n/a	n/a	n/a	n/a	89
Reliability Target	88	88	88	88	88	91	91	91	91	91
Target + 90% target	5 + 5	6 + 3	4 + 1	7 + 3	6 + 3	3 + 2	7 + 2	6 + 2	7 + 2	5 + 4

Avg. 8 best sites: Apr 92% May 94% Jun 87% Jul 93% Aug 94% Sept 93% Oct 93%

Avg. all sites: Apr 89% May 89% Jun 80% Jul 89% Aug 88% Sept 89% Oct 86%

* BNL: LCG/gLite CE probed by SAM but not installed with the SL4 upgrade



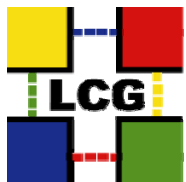
Comparison with VO-Specific SAM Tests

October 2007	OPS	ALICE	ATLAS	CMS	LHCb	
CERN	99%	67%	93%	98%	93%	CERN-PROD
DE-KIT	75%	72%	52%	98%	86%	FZK-LCG2
FR-CCIN2P3	90%	0%	9%	0%	53%	IN2P3-CC
IT-INFN-CNAF	97%	32%	94%	99%	42%	INFN-T1
NGDF	86%	0%	0%	-	-	NDGF-T1
UK-RAL	95%	82%	94%	97%	69%	RAL-LCG2
NL-T1	89%	69%	88%	-	89%	SARA-MATRIX
CA-TRIUMF	91%	-	92%	-	-	TRIUMF-LCG2
TW-ASGC	51%	-	81%	83%	-	Taiwan-LCG2
US-FNAL-CMS	73%	-	-	64%	-	USCMS-FNAL-WC1
ES-PIC	96%	-	94%	97%	55%	pic
US-T1-BNL	88%	-	75%	-	-	BNL-LCG2

>= 91%

>= 82%

< 82%



Summary of Issues and Solutions Reported

Description	SITE: Problem → Solution
SRM/MSS/DB	<p>BNL: dCache write pool full, flushing speed low → Temporary script restarts the pool when needed</p> <p>BNL: HPSS overload spike in PFTP sessions → Restarted dCache</p> <p>FZK: dCache gridftp doors problems → Restarted several times (same last month)</p> <p>FZK: SRM lock-up because of memory problems → Investigated (same last month)</p> <p>TRIUMF: dCache PNFS problems → Reinstalled PNFS server</p> <p>SARA: SRM time out → restarted dCache head node</p>
Operational Issues	<p>BNL: Web interface to LRC filled the disk space. Failed for 3 days.</p> <p>A user ran 250k jobs with 8k input files and output 10x files. → User's jobs suspended.</p> <p>Log files size reached the limits for app. servers → Reduced log level, added log rotation</p> <p>SARA: Job submission failed and job ran into wall-clock time limits and was killed.</p> <p>Posix tests hanging → Will fix the Posix problem and extend the wall-clock time limit</p>
Tools, SAM, GOODB	<p>ASGC: Problems with changing the production DPM node from the PPS to the production host. The issues was not solved for a couple of weeks.</p> <p>FNAL: Claims that the SAM tests are incorrect, but is a change in the site configuration that caused SAM to fail. Now is being fixed.</p>