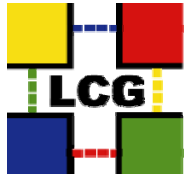




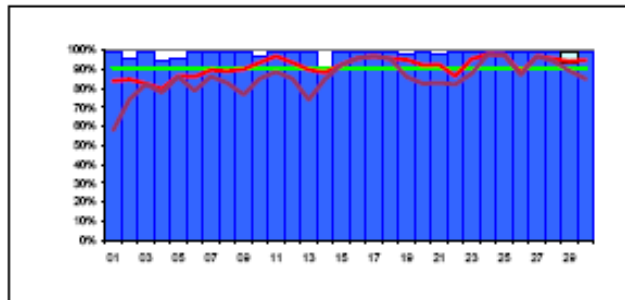
# Reliability Reports – November 2007

[http://lcg.web.cern.ch/LCG/MB/availability/site\\_reliability.pdf](http://lcg.web.cern.ch/LCG/MB/availability/site_reliability.pdf)

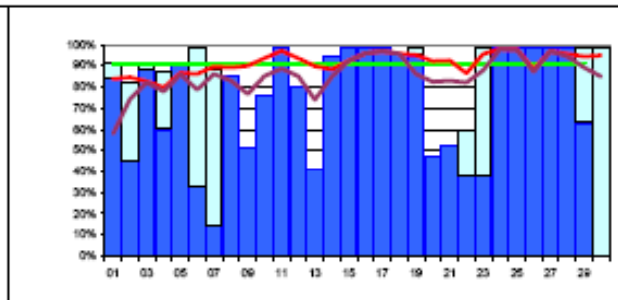


# Daily Data – November 2007

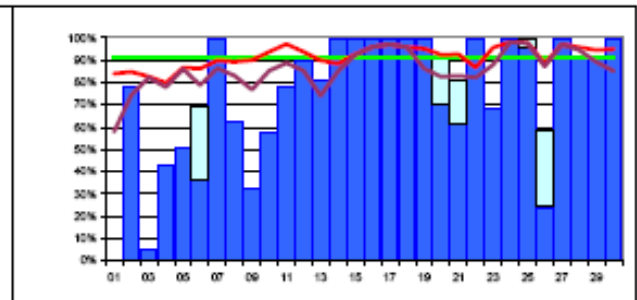
	CERN-PROD	FZK-LCG2	IN2P3-CC	INFN-T1	RAL-LCG2	SARA-MATRIX	TRIUMF-LCG2	Taiwan-LCG2	USCMS-FNAL WC1	PIC	BNL-LCG2	average reliabilities	target	NDGF
1	99%	90%	100%	99%	100%	87%	90%	0%	44%	99%	99%	84%	91%	100%
2	96%	73%	95%	96%	95%	96%	96%	49%	27%	96%	99%	85%	91%	99%
3	99%	90%	5%	99%	89%	99%	99%	99%	16%	99%	99%	83%	91%	99%
4	94%	83%	43%	99%	24%	96%	99%	99%	24%	99%	99%	80%	91%	99%
5	96%	91%	51%	78%	96%	80%	73%	99%	88%	96%	93%	87%	91%	99%
6	99%	99%	54%	89%	99%	91%	73%	94%	99%	98%	40%	86%	91%	99%
7	99%	56%	99%	58%	99%	98%	73%	99%	99%	99%	99%	90%	91%	99%
8	99%	85%	99%	49%	99%	93%	99%	99%	61%	99%	89%	89%	91%	99%
9	99%	51%	90%	99%	100%	99%	99%	99%	54%	99%	92%	90%	91%	99%
10	97%	76%	58%	99%	100%	99%	99%	99%	99%	99%	99%	94%	91%	99%
11	99%	99%	78%	96%	100%	99%	99%	99%	99%	99%	99%	97%	91%	99%
12	99%	80%	90%	61%	100%	99%	99%	99%	99%	99%	99%	94%	91%	99%
13	99%	41%	81%	74%	100%	96%	95%	99%	99%	99%	96%	90%	91%	99%
14	91%	95%	99%	74%	52%	99%	85%	99%	99%	83%	99%	88%	91%	86%
15	99%	99%	99%	89%	99%	99%	92%	99%	99%	38%	99%	93%	91%	99%
16	99%	99%	99%	87%	83%	99%	99%	97%	92%	99%	99%	96%	91%	99%
17	99%	99%	99%	96%	96%	99%	95%	99%	89%	99%	95%	97%	91%	99%
18	99%	96%	99%	95%	88%	99%	95%	99%	82%	99%	99%	96%	91%	99%
19	98%	99%	99%	95%	89%	99%	99%	99%	86%	84%	95%	95%	91%	99%
20	99%	47%	88%	99%	99%	100%	99%	99%	85%	99%	95%	92%	91%	99%
21	98%	52%	76%	99%	96%	100%	98%	97%	99%	98%	99%	93%	91%	99%
22	99%	49%	99%	99%	99%	45%	91%	99%	96%	99%	65%	87%	91%	99%
23	99%	99%	99%	99%	99%	99%	99%	99%	78%	99%	91%	96%	91%	87%
24	99%	99%	99%	99%	99%	95%	99%	99%	91%	99%	98%	98%	91%	99%
25	99%	99%	99%	99%	99%	99%	99%	99%	88%	99%	96%	98%	91%	99%
26	99%	99%	38%	99%	99%	99%	84%	99%	79%	83%	99%	88%	91%	83%
27	99%	99%	99%	99%	99%	99%	99%	99%	82%	99%	91%	97%	91%	99%
28	99%	99%	91%	99%	99%	90%	99%	99%	92%	99%	83%	96%	91%	99%
29	99%	99%	92%	99%	99%	84%	92%	99%	73%	99%	99%	94%	91%	99%
30	99%	100%	99%	99%	99%	92%	89%	99%	66%	99%	99%	95%	91%	99%
bility	98%	85%	84%	91%	93%	94%	94%	94%	79%	95%	93%	92%	91%	98%



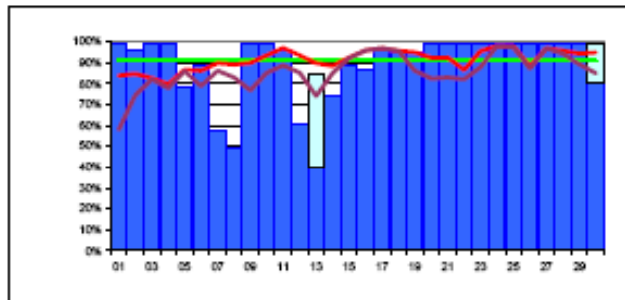
CERN-PROD avail: 98% reliability: 98%



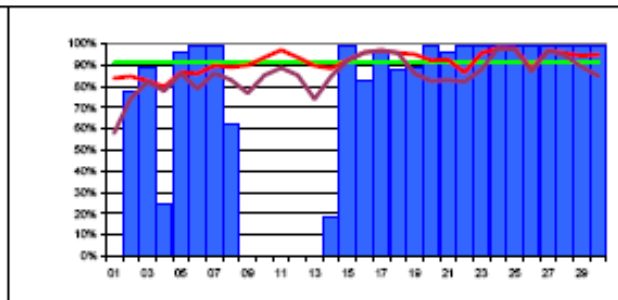
FZK-LCG2 avail: 72% reliability: 85%



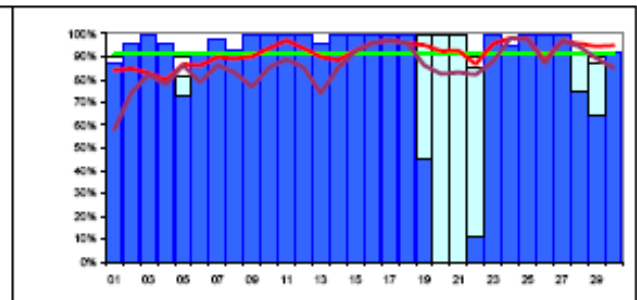
IN2P3-CC avail: 73% reliability: 84%



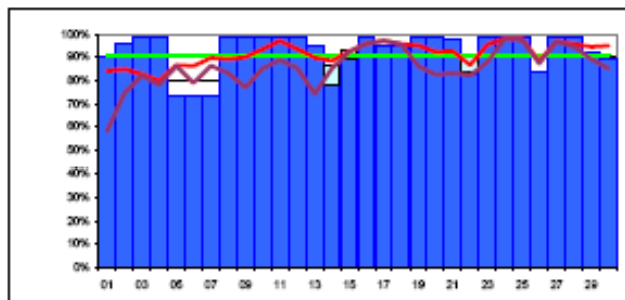
INFN-T1 avail: 89% reliability: 91%



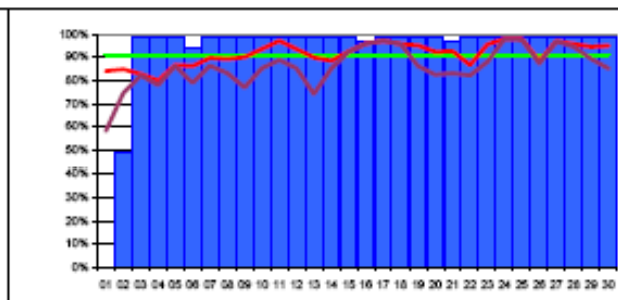
RAL-LCG2 avail: 70% reliability: 93%



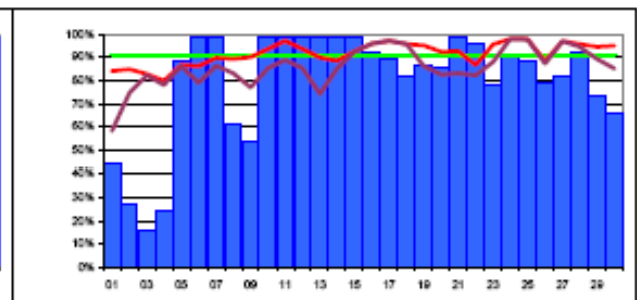
SARA-MATRIX avail: 83% reliability: 94%



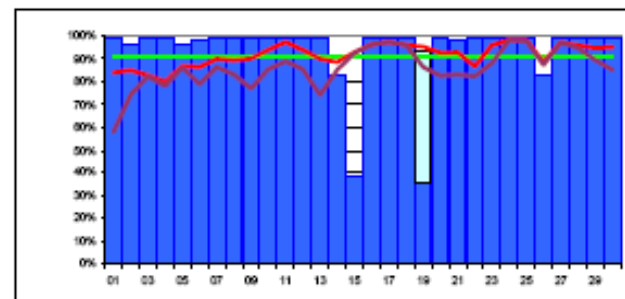
TRIUMF-LCG2 avail: 93% reliability: 94%



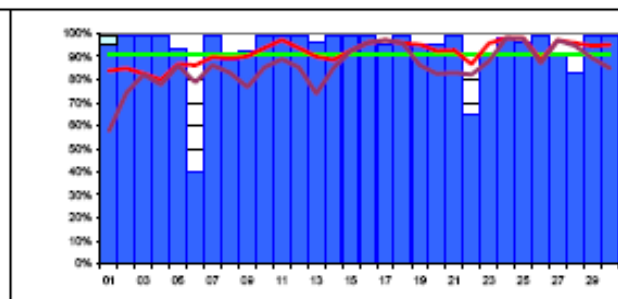
Taiwan-LCG2 avail: 94% reliability: 94%



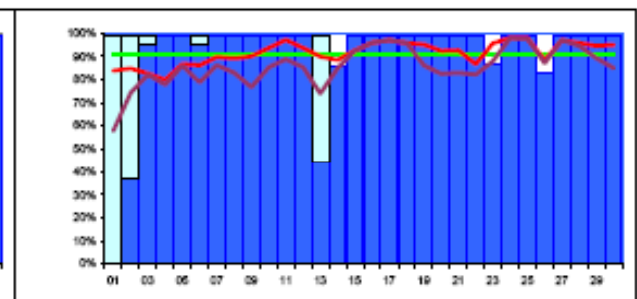
USCMS-FNAL-WC1 avail: 75% reliability: 79%



PIC avail: 93% reliability: 95%



BNL avail: 93% reliability: 93%



NDGF avail: 90% reliability: 98%



# Reliability January – November 2007

Site	Jan 07	Feb 07	Mar 07	Apr 07	May 07	Jun 07	Jul 07	Aug 07	Sept 07	Oct 07	Nov 07
CERN	99	91	97	96	90	96	95	99	100	99	98
DE-KIT (FZK)	85	90	75	79	79	48	75	67	91	76	85
FR-CCIN2P3	96	74	58	95	94	88	94	95	70	90	84
IT-INFN-CNAF	75	93	76	93	87	67	82	70	80	97	91
UK-T1-RAL	80	82	80	87	87	87	98	99	90	95	93
NL-T1	93	83	47	92	99	75	92	86	92	89	94
CA-TRIUMF	79	88	70	73	95	95	97	97	95	91	94
TW-ASGC	96	97	95	92	98	80	83	83	93	51	94
US-FNAL-CMS	84	67	90	85	77	77	92	99	89	75	79
ES-PIC	86	86	96	95	77	79	96	94	93	96	95
US-T1-BNL	90	57*	6*	89	98	94	75	71	91	89	93
NDGF	n/a	n/a	n/a	n/a	n/a	n/a	n/a	n/a	n/a	89	98
Target	88	88	88	88	88	91	91	91	91	91	91
Target + 90% target	5 + 5	6 + 3	4 + 1	7 + 3	6 + 3	3 + 2	7 + 2	6 + 2	7 + 2	5 + 4	9 + 2

Avg. 8 best sites: May 94% Jun 87% Jul 93% Aug 94% Sept 93% Oct 93% Nov 95%  
 Avg. all sites: May 89% Jun 80% Jul 89% Aug 88% Sept 89% Oct 86% Nov 92%

\* BNL: LCG/gLite CE probed by SAM but not installed with the SL4 upgrade