



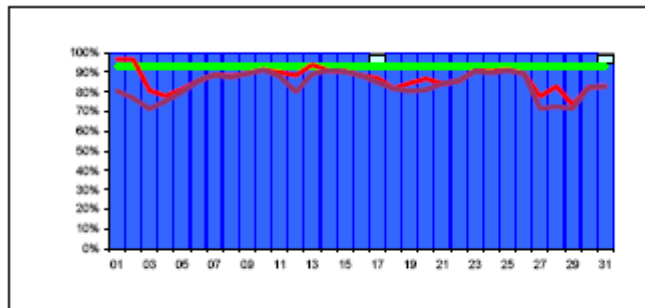
# Reliability Reports – December 2007

[http://lcg.web.cern.ch/LCG/MB/availability/site\\_reliability.pdf](http://lcg.web.cern.ch/LCG/MB/availability/site_reliability.pdf)

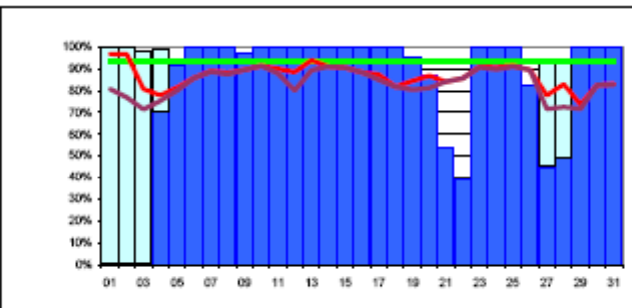


# Daily Data – November 2007

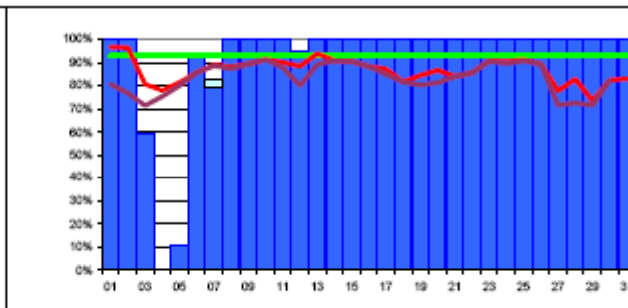
	CERN-PROD	FZK-LCG2	IN2P3-CC	INFN-T1	RAL-LCG2	SARA-MATRIX	TRIUMF-LCG2	Taiwan-LCG2	USCMS-FNAL WC1	PIC	BNL-LCG2	average reliabilities	target	NDGF
1	100%	n/a	100%	n/a	100%	100%	92%	100%	75%	100%	100%	97%	91%	100%
2	100%	n/a	100%	n/a	100%	100%	91%	100%	73%	100%	100%	96%	91%	100%
3	100%	0%	59%	82%	64%	76%	100%	100%	87%	100%	100%	81%	91%	100%
4	100%	100%	0%	100%	48%	0%	100%	100%	95%	100%	91%	78%	91%	100%
5	100%	91%	12%	100%	55%	73%	100%	100%	61%	84%	100%	81%	91%	100%
6	100%	100%	92%	100%	53%	30%	85%	100%	68%	100%	100%	86%	91%	100%
7	100%	100%	82%	100%	100%	0%	100%	92%	92%	100%	100%	89%	91%	100%
8	100%	100%	100%	100%	100%	0%	100%	100%	56%	100%	100%	88%	91%	100%
9	100%	97%	100%	100%	100%	0%	100%	100%	87%	88%	100%	89%	91%	100%
10	100%	100%	100%	100%	100%	0%	100%	100%	95%	100%	100%	91%	91%	100%
11	100%	100%	100%	100%	98%	7%	100%	100%	81%	93%	100%	90%	91%	100%
12	100%	100%	95%	100%	82%	0%	95%	100%	n/a	100%	100%	88%	91%	100%
13	100%	100%	100%	100%	100%	25%	100%	100%	100%	100%	100%	94%	91%	100%
14	100%	100%	100%	100%	100%	96%	100%	62%	87%	87%	58%	91%	91%	100%
15	100%	100%	100%	100%	96%	97%	100%	100%	92%	100%	0%	90%	91%	100%
16	100%	100%	100%	100%	100%	76%	100%	100%	83%	100%	0%	88%	91%	100%
17	100%	100%	100%	93%	100%	53%	100%	100%	100%	100%	0%	87%	91%	100%
18	100%	100%	100%	91%	90%	36%	100%	100%	80%	82%	0%	82%	91%	100%
19	100%	95%	100%	100%	100%	44%	100%	100%	100%	74%	0%	84%	91%	100%
20	100%	87%	100%	100%	94%	90%	100%	100%	92%	77%	0%	87%	91%	100%
21	100%	54%	100%	66%	100%	100%	84%	100%	100%	100%	4%	84%	91%	100%
22	100%	39%	100%	88%	100%	100%	100%	100%	100%	100%	0%	86%	91%	100%
23	100%	100%	100%	100%	100%	95%	100%	100%	100%	95%	0%	91%	91%	100%
24	100%	100%	100%	100%	100%	93%	100%	100%	100%	93%	0%	91%	91%	100%
25	100%	100%	100%	100%	100%	97%	97%	100%	100%	100%	0%	91%	91%	100%
26	100%	82%	100%	100%	100%	100%	93%	100%	100%	98%	0%	89%	91%	100%
27	100%	87%	100%	84%	100%	13%	98%	100%	51%	100%	0%	78%	91%	100%
28	100%	91%	100%	84%	100%	42%	n/a	100%	94%	100%	0%	83%	91%	100%
29	100%	100%	100%	94%	45%	0%	59%	100%	84%	100%	0%	74%	91%	100%
30	100%	100%	100%	97%	100%	0%	100%	100%	92%	100%	0%	82%	91%	100%
31	100%	100%	100%	100%	96%	0%	100%	100%	100%	100%	0%	83%	91%	100%
iability	100%	90%	92%	96%	91%	50%	96%	99%	88%	96%	44%	87%	91%	100%



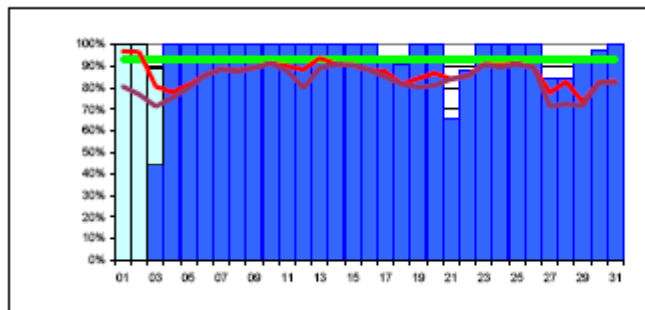
CERN-PROD avail: 100% reliability: 100%



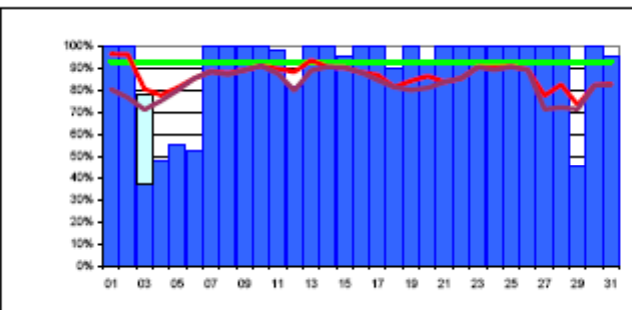
FZK-LCG2 avail: 81% reliability: 90%



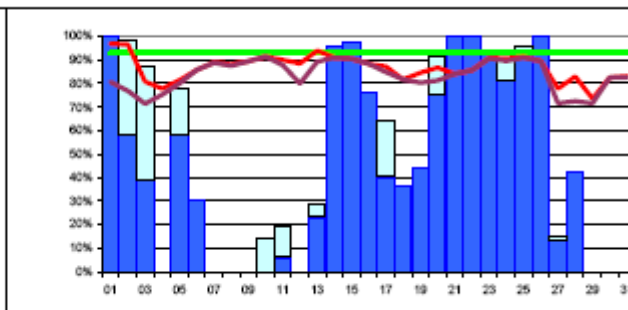
IN2P3-CC avail: 91% reliability: 92%



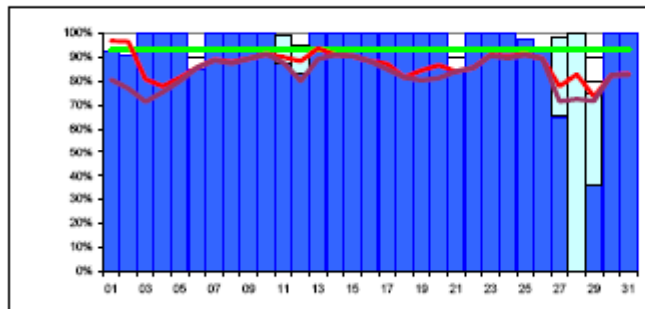
INFN-T1 avail: 88% reliability: 96%



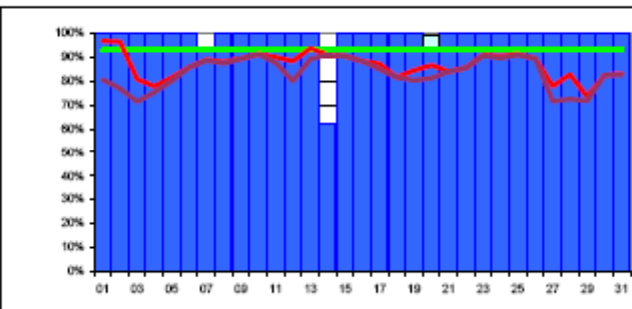
RAL-LCG2 avail: 90% reliability: 91%



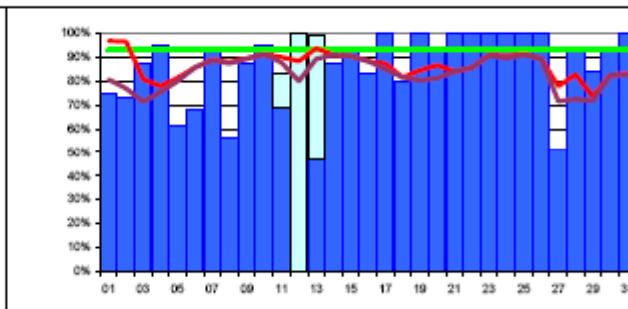
SARA-MATRIX avail: 45% reliability: 50%



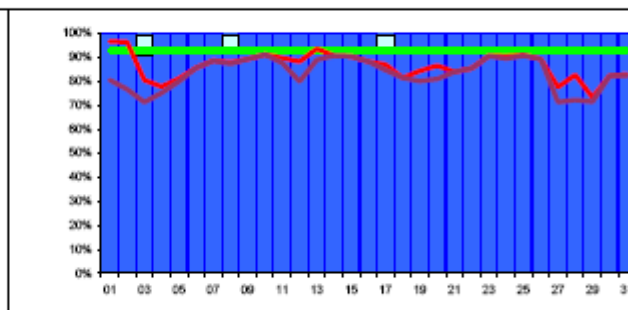
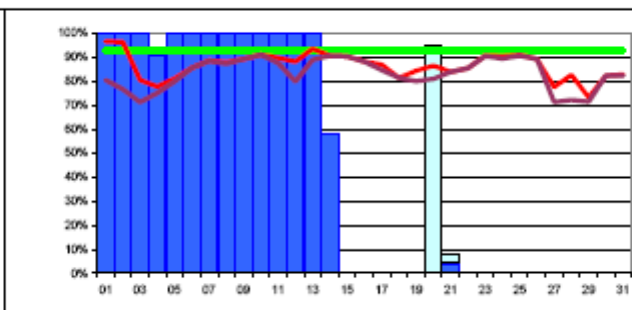
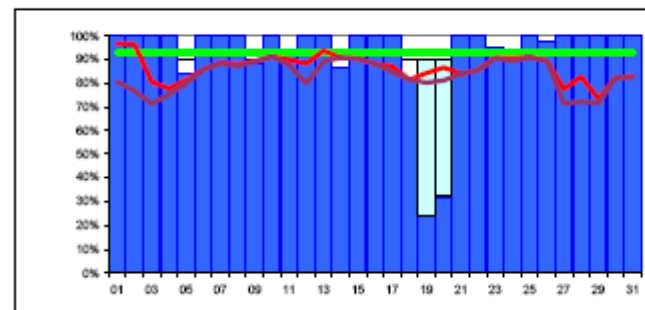
TRIUMF-LCG2 avail: 91% reliability: 96%



Taiwan-LCG2 avail: 98% reliability: 99%



USCMS-FNAL-WC1 avail: 83% reliability: 88%





# Reliability January – November 2007

Site	Mar 07	Apr 07	May 07	Jun 07	Jul 07	Aug 07	Sept 07	Oct 07	Nov 07	
CERN	97	96	90	96	95	99	100	99	98	100
DE-KIT (FZK)	75	79	79	48	75	67	91	76	85	90
FR-CCIN2P3	58	95	94	88	94	95	70	90	84	92
IT-INFN-CNAF	76	93	87	67	82	70	80	97	91	96
UK-T1-RAL	80	87	87	87	98	99	90	95	93	91
NL-T1	47	92	99	75	92	86	92	89	94	50
CA-TRIUMF	70	73	95	95	97	97	95	91	94	96
TW-ASGC	95	92	98	80	83	83	93	51	94	99
US-FNAL-CMS	90	85	77	77	92	99	89	75	79	88
ES-PIC	96	95	77	79	96	94	93	96	95	96
US-T1-BNL	6*	89	98	94	75	71	91	89	93	44
NDGF	n/a	n/a	n/a	n/a	n/a	n/a	n/a	89	98	100
Target	88	88	88	91	91	91	91	91	91	
Target + 90% target	4 + 1	7 + 3	6 + 3	3 + 2	7 + 2	6 + 2	7 + 2	5 + 4	9+2	8+2

Avg. 8 best sites: Jun 87% Jul 93% Aug 94% Sept 93% Oct 93% Nov 95% Dec 96%  
 Avg. all sites: Jun 80% Jul 89% Aug 88% Sept 89% Oct 86% Nov 92% Dec 87%

\* BNL: LCG/gLite CE probed by SAM but not installed with the SL4 upgrade



## Summary of Issues and Solutions Reported

Description	SITE: Problem → Solution
<b>SRM/MSS/DB</b>	<b>DE-KIT: SRM DB slowing down → Restarted DB, not solved</b> <b>IT-INFN-CNAF: Castor stopped working → Not understood, restarted.</b> <b>ES-PIC: dCache GridFTP doors overloaded. Too many transfer streams simultaneously. → Rebooted</b> <b>US-FNAL-CMS: Restarted SRM a few times</b> <b>US-FNAL-CMS: PNFS backlogs cause SAM timeouts (&gt; 30 sec.)</b>
<b>Middleware Issues</b>	<b>ASGC: BDII Time-out → Increased time but not found solution.</b> <b>NL-T1: Site BDII corrupted stopped working → recovered the postgres DB, a lot of work</b> <b>ES-PIC: CE issues. globus-gatekeeper and VOMS problems</b>
<b>Operational Issues</b>	<b>DE-KIT: Hardware failure ,fallback solution failed too → Under investigation</b> <b>IT-INFN-CNAF: FC switch failed → Fix applied but down time needed</b> <b>ES-PIC: Separate failures of OPN, DNS</b>
<b>Tools (SAM, GOADB)</b>	<b>US-BNL-T1: 2 weeks failing . After the removal of the SRM 1 endpoint the SRM tests were failing. Apparently not due to SAM.</b> <b>FR-CCIN2P3: Scheduled downtimes not taken into account. To be checked.</b>