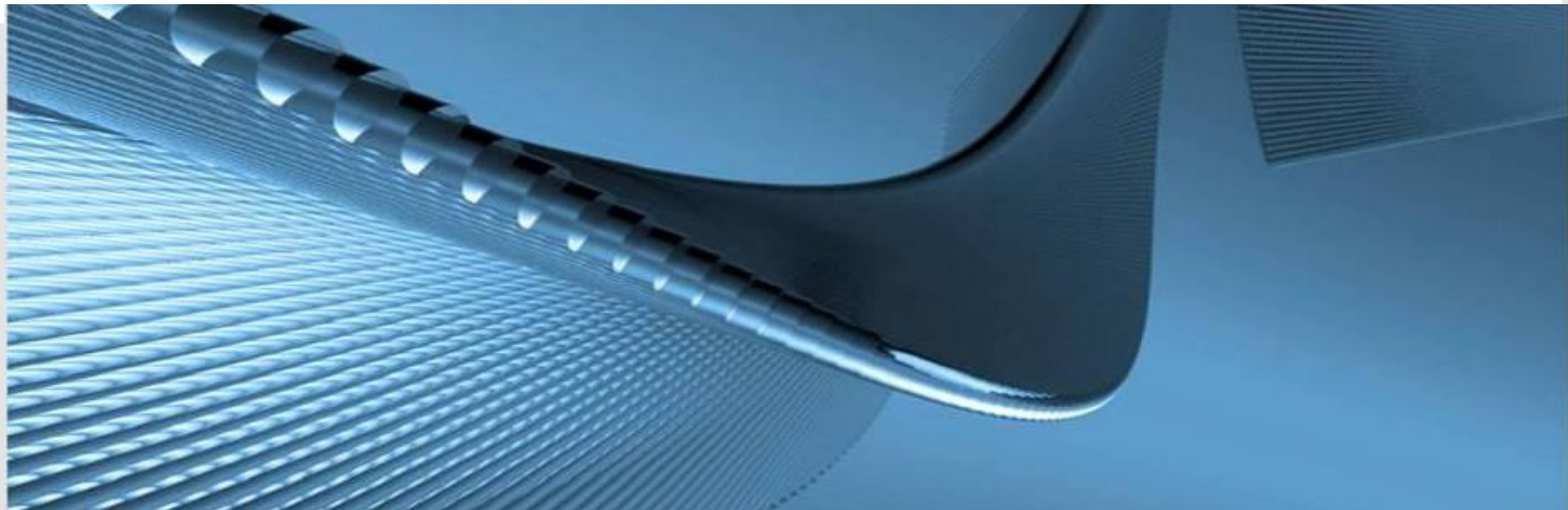


**Bruno Hoefft (KIT/SCC)**

**LHCOPN GGUS – Ticketsystem**

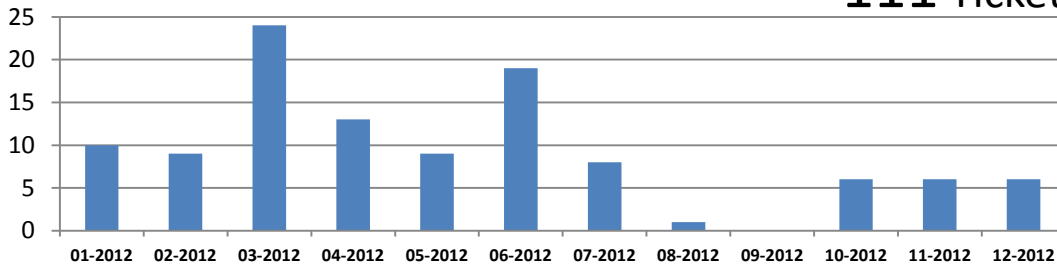


# LHCOPN OPS-WG

- OPS-WG TC is canceled until further notice
  - A TC can be established on request (asap)
- At the twiki OPS-WG  
(<https://twiki.cern.ch/twiki/bin/view/LHCOPN/OpsTelCom>)
  - The reports will be written further
    - Would suggest quarterly (missed 2013 Q1)
    - Sites are still asked to fill in their reports
    - LHCOPN statistics

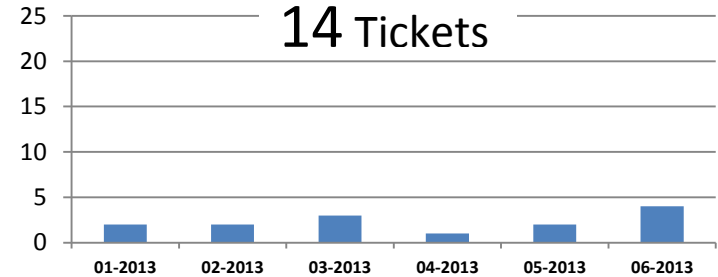
## GGUS-tickets-number 2013

111 Tickets



## GGUS-tickets-number first half 2013

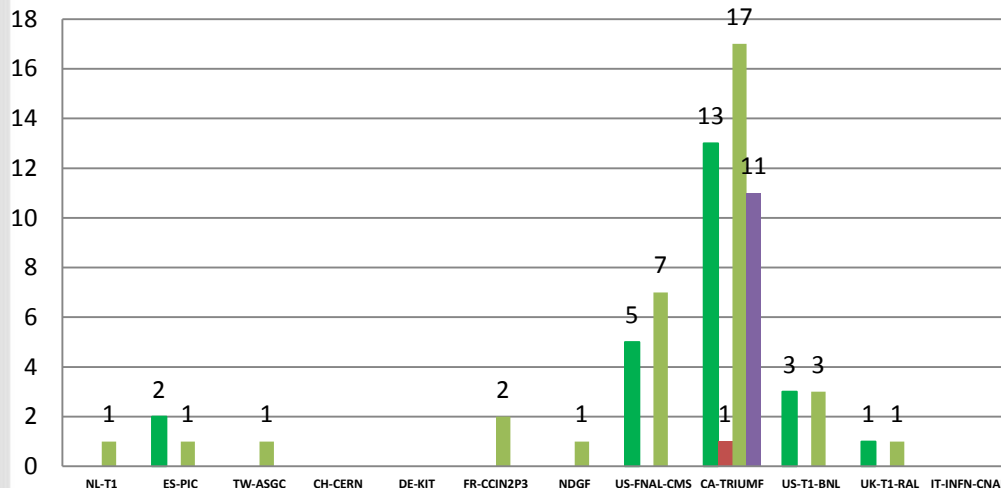
14 Tickets



## Events matching per T1

2012-01, 2012-6

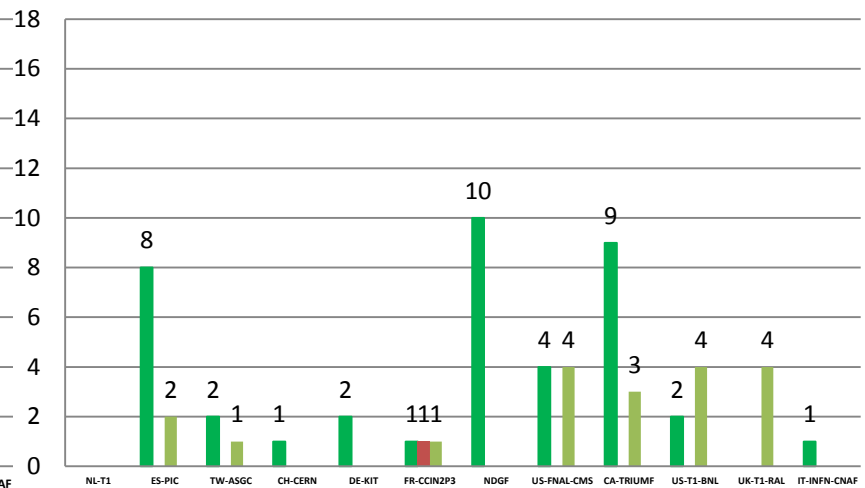
- 2012-Q1 --> no. of detected Events >= 1h
- 2012-Q1 --> no. of related Events reported in TTS
- 2012-Q2 --> no. of detected Events >= 1h
- 2012-Q2 --> no. of related Events reported in TTS



## Events matching per T1

2012-01, 2012-12

- 2013-Q1 --> no. of detected Events >= 1h
- 2013-Q1 --> no. of related Events reported in TTS
- 2013-Q2 --> no. of detected Events >= 1h
- 2013-Q2 --> no. of related Events reported in TTS



# Pro and Cons

- Close the GGUS LHCOPN Ticketsystem is quickly arranged → but
  - Are we really sure LHC has no benefit it
  - reestablish the ticket system again will take more effort as to keeping it

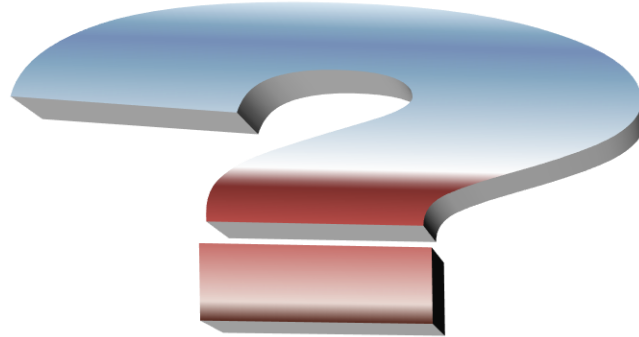
- New definition → when a ticket shall be written
- e.g.:
  - Loss of service (any kind / any length at T0/T1)
    - At LHC detector run
  - Backup link (any kind / any length at T0/T1)

# Evolving?

- Are there already thoughts of a ticket system for LHCONE?
  - GGUS ticket system is able to exchange tickets
  - Exchange protocol “defined” and there are already examples implementation (Geant/GGUS?)
  - Via soap (and ...)

*thanks for your attention*

**Bruno Hoefft (KIT/SCC)**



**LHCOPN GGUS – Ticketsystem**

