



Enabling Grids for E-science

P-GRADE Portal gyakorlat ismertető

Gergely Sipos (sipos@sztaki.hu)

MTA SZTAKI

***Computer and Automation Research Institute
Hungarian Academy of Sciences***

www.eu-egee.org





NEW [New GILDA usage rule](#) **NEW**

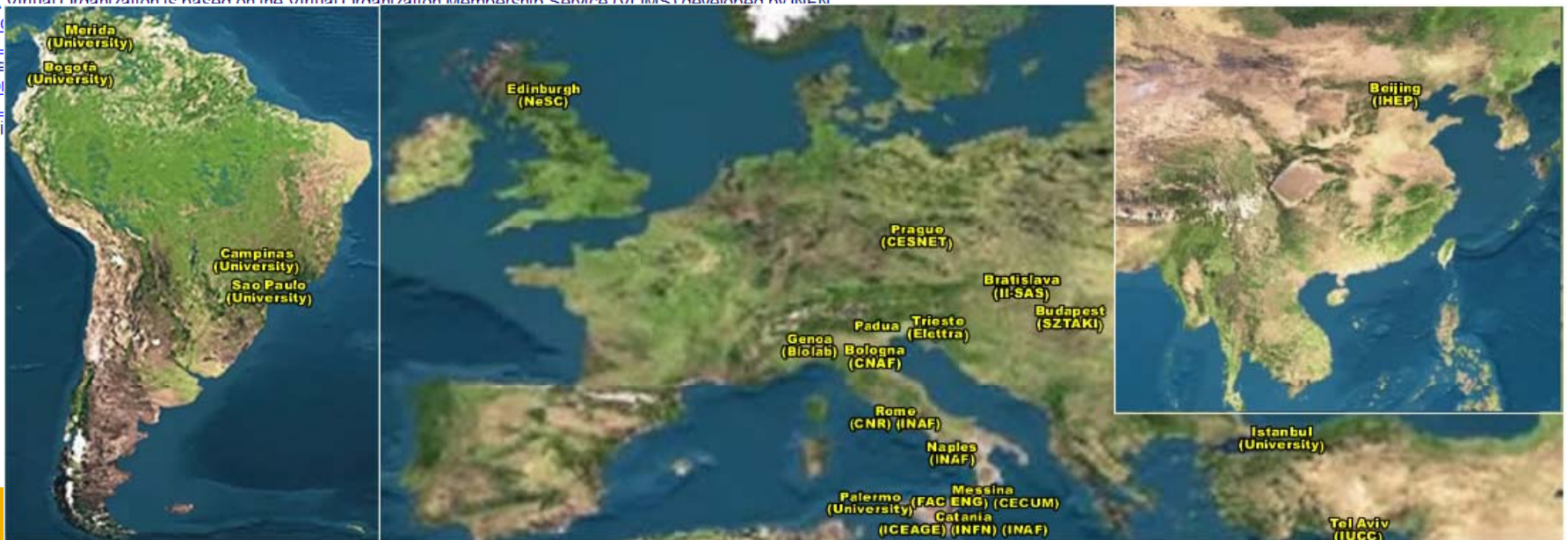
GILDA (G rid I nfn L aboratory for D issemination A ctivities)

is a virtual laboratory to demonstrate/disseminate the strong capabilities of grid computing.

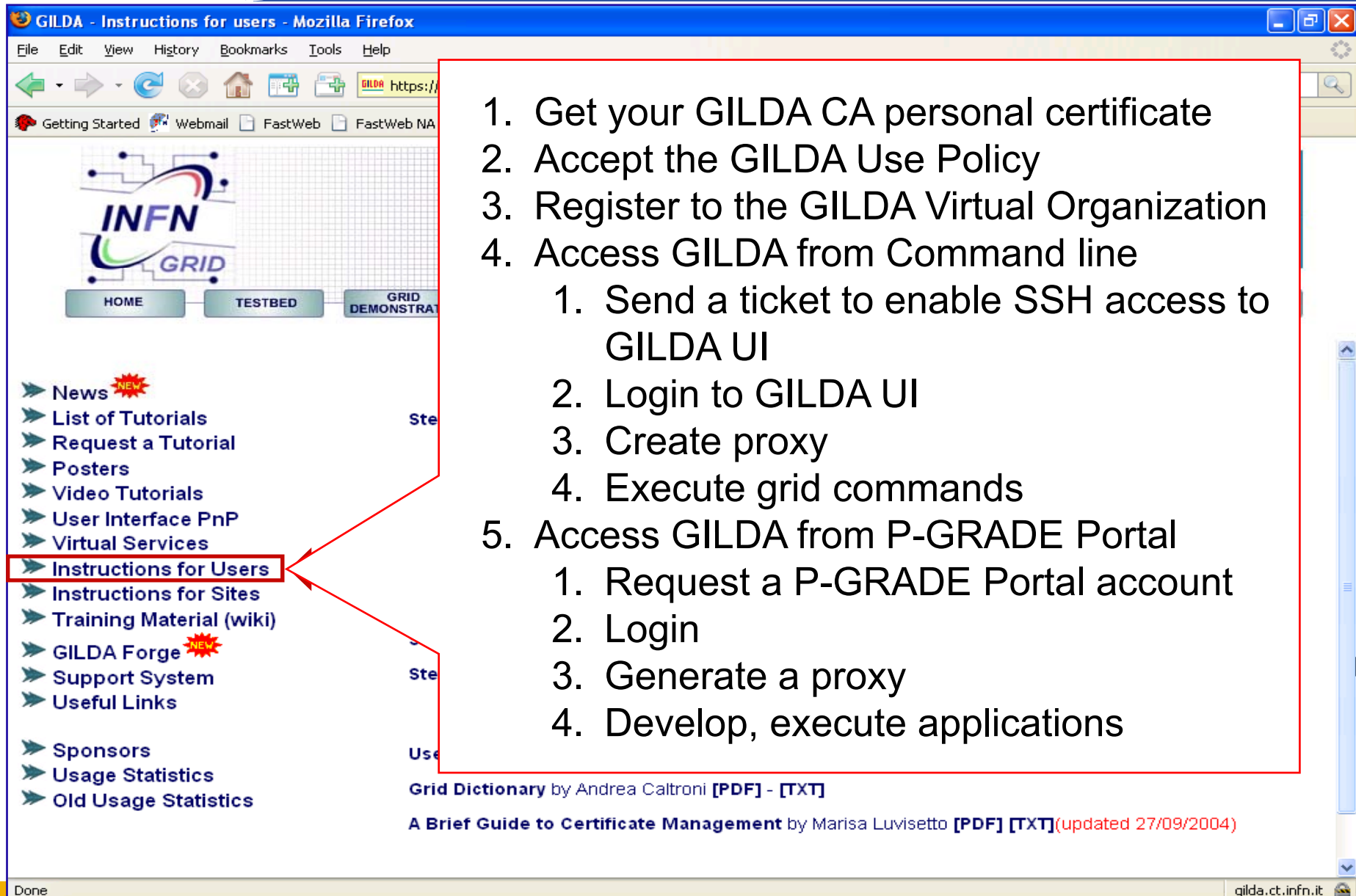
GILDA consists of the following elements:

- [the GILDA Testbed](#): a series of sites and services (Resource Broker, Information Index, Data Managers, Monitor Elements, and Storage Elements) spread all over Italy and the rest of the world on which the latest version of the [INFN G](#) compatible with [gLite](#) is installed;
- [the Grid Demonstrator](#): a customized version of the full [GENIUS web portal](#), jointly developed by INFN and [NICE](#), from which you can submit a pre-defined set of applications to the GILDA Testbed;
- [the GILDA Certification Authority](#): a fully functional Certification Authority which issues 14-days X.509 certificates to enable you to experience grid computing on the GILDA Testbed;
- [the GILDA Virtual Organization](#): a Virtual Organization gathering all people wanting to experience grid computing on the GILDA Testbed; the GILDA Virtual Organization is based on the [Virtual Organization Membership Service \(VOMS\)](#) developed by INFN;
- [the Grid](#)
- [the GIL](#)
- [the mo](#)
- [the GIL](#)
- [subscri](#)

- Training VO of EGEE
- Production VOs look like this!
- >20 sites in 3 continents
- Guaranteed response for tutorials
- Has its own CA:
 - 2 weeks long renewable certificates
 - No identity check
- Can be used by anyone any time (priority for tutorials)

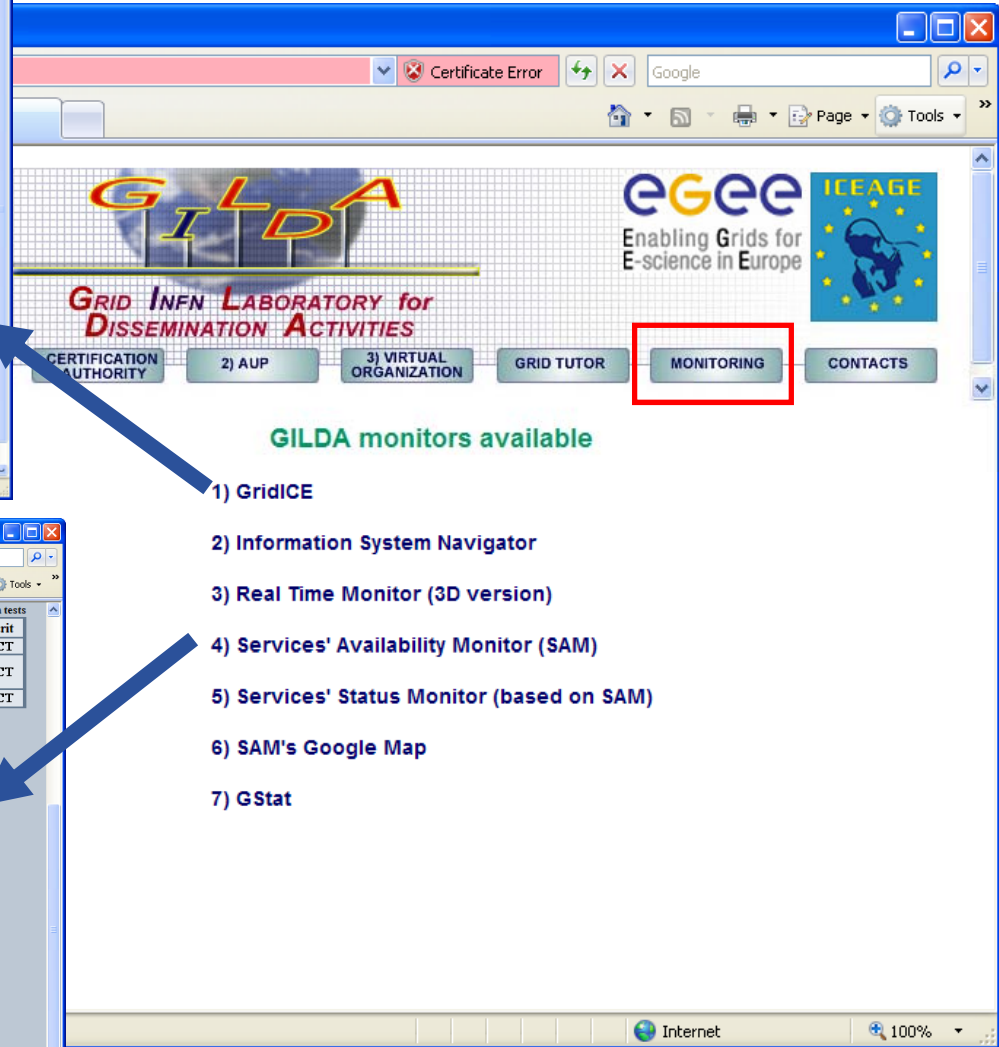


How to get access to GILDA



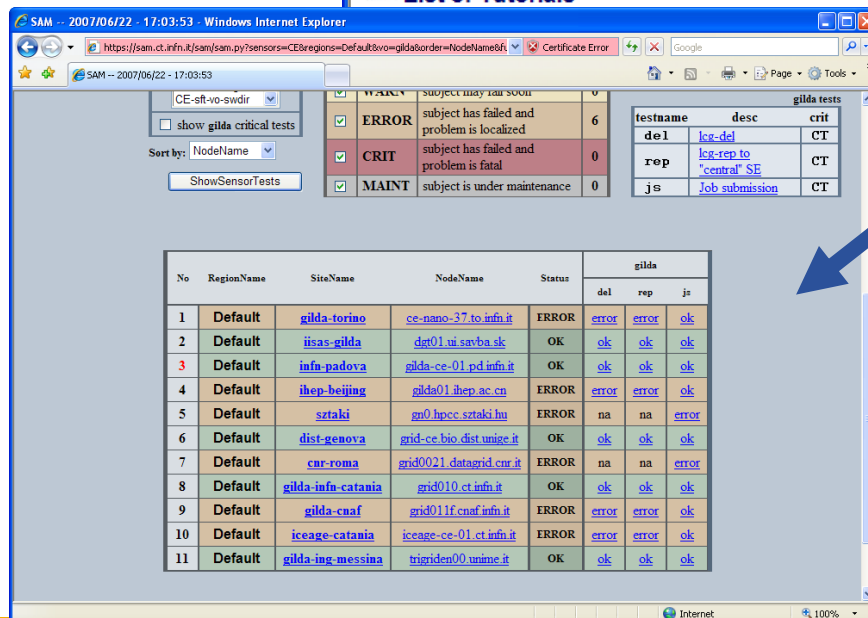
The screenshot shows a Mozilla Firefox browser window displaying the GILDA website. The browser title is "GILDA - Instructions for users - Mozilla Firefox". The page content includes the INFN GRID logo, navigation buttons (HOME, TESTBED, GRID DEMONSTRATION), and a sidebar menu. The "Instructions for Users" link in the sidebar is highlighted with a red box. A red arrow points from this box to a list of instructions on the right side of the slide.

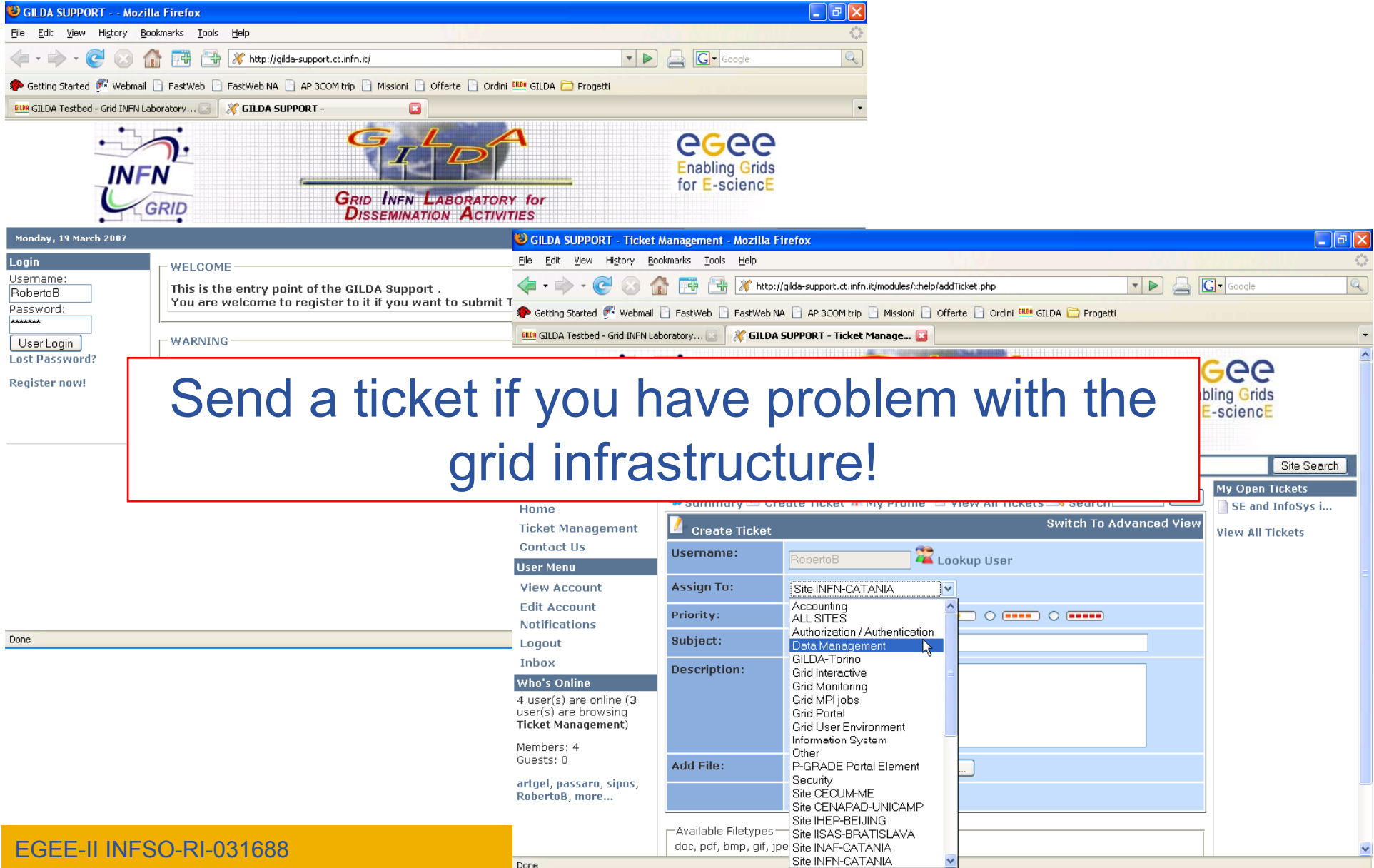
1. Get your GILDA CA personal certificate
2. Accept the GILDA Use Policy
3. Register to the GILDA Virtual Organization
4. Access GILDA from Command line
 1. Send a ticket to enable SSH access to GILDA UI
 2. Login to GILDA UI
 3. Create proxy
 4. Execute grid commands
5. Access GILDA from P-GRADE Portal
 1. Request a P-GRADE Portal account
 2. Login
 3. Generate a proxy
 4. Develop, execute applications



GILDA monitors available

- 1) GridICE
- 2) Information System Navigator
- 3) Real Time Monitor (3D version)
- 4) Services' Availability Monitor (SAM)
- 5) Services' Status Monitor (based on SAM)
- 6) SAM's Google Map
- 7) GStat





Monday, 19 March 2007

Send a ticket if you have problem with the grid infrastructure!

Create Ticket Switch To Advanced View

Username:	RobertoB	Lookup User
Assign To:	Site INFN-CATANIA	
Priority:	Accounting ALL SITES Authorization / Authentication Data Management GILDA-Torino Grid Interactive Grid Monitoring Grid MPI jobs Grid Portal Grid User Environment Information System Other	
Subject:		
Description:		
Add File:	P-GRADE Portal Element Security Site CECUM-ME Site CENAPAD-UNICAMP Site IHEP-BEIJING Site ISAS-BRATISLAVA Site INAF-CATANIA Site INFN-CATANIA	

Available Filetypes: doc, pdf, bmp, gif, jpeg



RELEASE 2.5

Magyar

P-GRADE → **GILDA** portal

GridSphere

Otthon

News

15/Oct/2007: P-GRADE Portal 2.5 will become Open Source from November announced Gergely Sipos on behalf of MTA SZTAKI at the EGEE'07 conference. You can find more details [here](#). MTA SZTAKI is working on the administrative processes to make the source code of P-GRADE Portal available to Alliance members as soon as possible. Members so far could contribute to P-GRADE by developing portlets that were plugged into the Gridsphere portal framework underlying P-GRADE. Getting access to the source code opens the door for more advanced collaborations, such as customizing the core P-GRADE portlets or extending the capabilities of P-GRADE with new workflow or parameter study management features. The developer alliance is open to any institute or research group, please visit portal.p-grade.hu for information on how to become an alliance member. MTA SZTAKI collects input on how to implement the open source P-GRADE project. Please inform us via pgportal@lpds.sztaki.hu about the license you recommend for P-GRADE, the features you would like to add to the tool, or any other business that can be relevant to an open collaboration.

06/Mar/2007: The GILDA P-GRADE Portal was upgraded to v2.5. Among other new features, P-GRADE Portal 2.5 gives support for the development and execution of workflow based grid parameter studies. For more information on the 2.5 release please visit portal.p-grade.hu

09/Jan/2006: Portal was upgraded to P-GRADE Portal v.2.4.1. The new version contains several new features and bug fixes. For further information on P-GRADE Portal v.2.4.1 please visit portal.p-grade.hu.

11/Nov/2006: GILDA P-GRADE Portal tutorial is available on-line [here](#). The tutorial demonstrates the capabilities of the Portal and provides exercises that can be easily followed by self-guided learners and participants of P-GRADE Portal training events.

17/Oct/2006: From now on participants of organized grid tutorials have precedence on the GILDA infrastructure with respect to other GILDA users. During organized tutorials GILDA resources are inaccessible for those who are not participants of the events. The list of GILDA training events can be found [here](#). The GILDA P-GRADE Portal is accessible during these trainings too, however, for those who

- News
- How to get an account
- Example exercises

Bejelentkezés

Felhasználó

Jelszó

Remember my login

Bejelentkezés

[Elfelejtetted a jelszavad?](#)

Done Internet 100%

- **Ki kapott már hozzáférést a GILDA-hoz?**
 - usercert.pem → certificate
 - userkey.pem → private key

Két héten belül meg kell újítani! Félév végéig érvényes lesz.

- **Akinek nincs GILDA hozzáférése az**
 1. **Igényeljen most. Félév végéig érvényes lesz.**
 2. Amíg az nincs meg, addig használjon
 - ezen kulcspárok közül egyet:

http://pds.sztaki.hu/~sipos/GILDA_ELTE/ (password **BUDAPEST**)
 - és ezen GILDA UI accountok közül egyet

Account: **budapest01** – **budapest20**
 Password: **GridBUD01** – **GridBUD20**

- **Ki kapott már accountot a GILDA P-GRADE Portálhoz?**

- **Akinek nincs GILDA P-GRADE Portál accountja az**
 1. **Kérjen tőlünk most**

- **Féléves feladaton dolgozók**
- **Segítséget adhat:**
 - **Tutorial:**
http://portal.p-grade.hu/tutorials/induction/index_hands-on.htm
 - **Equation solver workflow example:**
<http://portal.p-grade.hu/?m=12&s=2>
 - **Parameter study példasor:**
<http://indico.cern.ch/materialDisplay.py?contribId=34&materialId=0&confId=14387>

