



Irradiation of SURVEY equipment

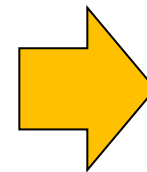
Mateusz Sosin
BE/ABP/SU

■ Active tests

- ✓ WPS sensors active irradiation (**5MGy**)

■ Passive tests

- ✓ ZTS actuators for CLEX (**5MGy**)
- ✓ Switches and microswitches samples (**300kGy**)
- ✓ MAXON MOTOR equipment: 2 motors + 2 gearboxes + 2 resolvers (**300kGy**)
- ✓ Filling/Purging device (**300kGy**)
- ✓ Wire displacer (**300kGy**)

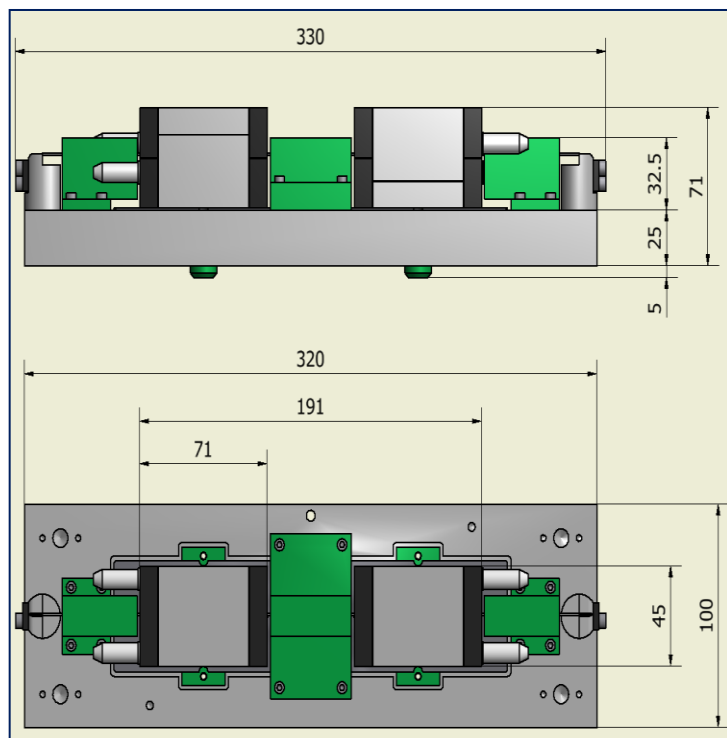


TENTATIVE

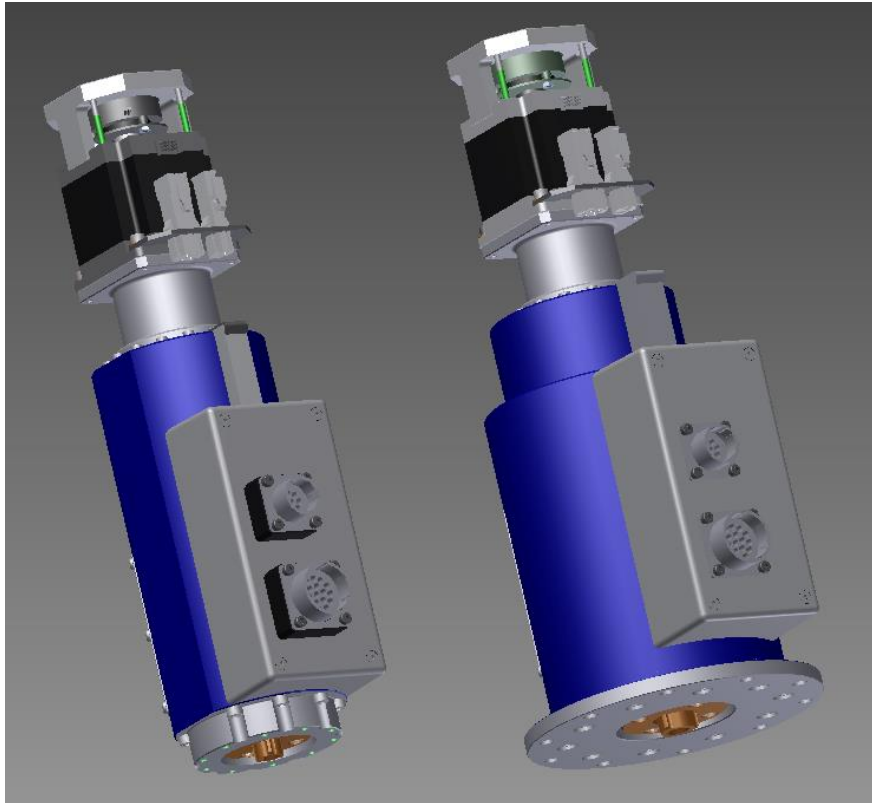
WPS sensors active irradiation (5MGy)

■ Active irradiation up to 5MGy

- ✓ Tests specification depends of results of current passive irradiation (pending @ Fraunhofer)
- ✓ 2 sensors and 2 cables irradiated, 1 sensor as external reference for irradiated cables
- ✓ If applicable – preferred use of existing test bench (Question: Impact of dimensions of components wrt. accesible dose rate per volume of material ? Does redesign of TB needed?)

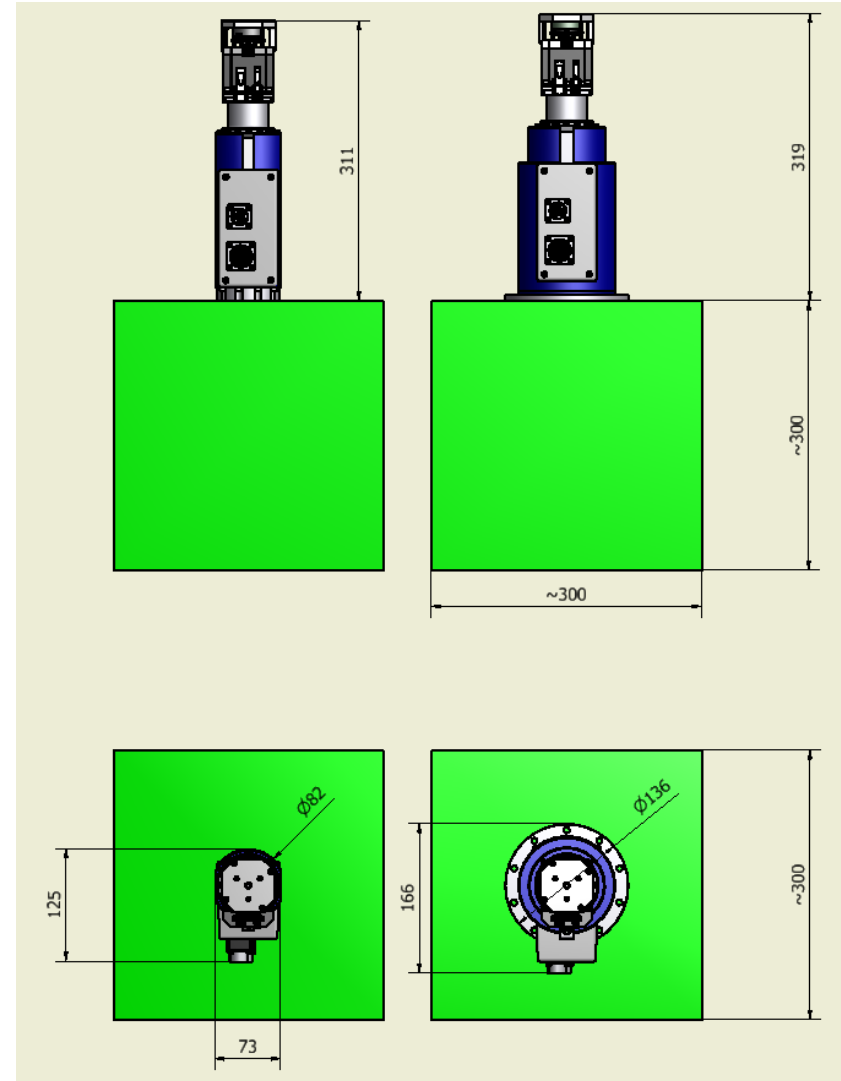


ZTS actuators for CLEX (5MGy)



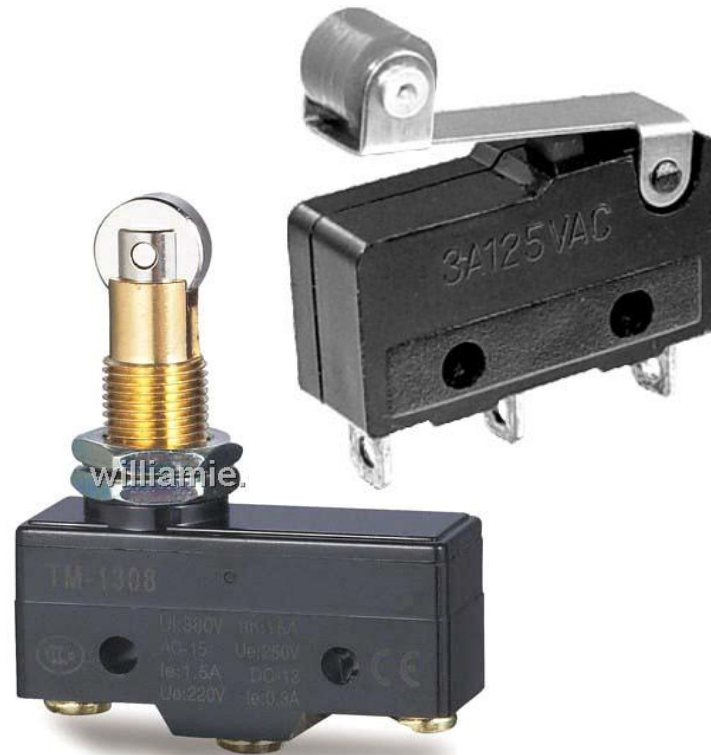
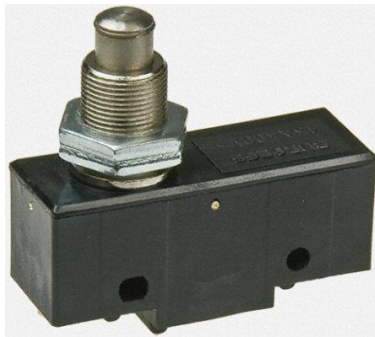
■ Passive irradiation up to 5MGy

- ✓ 4 intermediate steps: 100 kGy, 300 kGy, 1 MGy, 5 MGy
- ✓ Intermediate measurements using delivered test bench



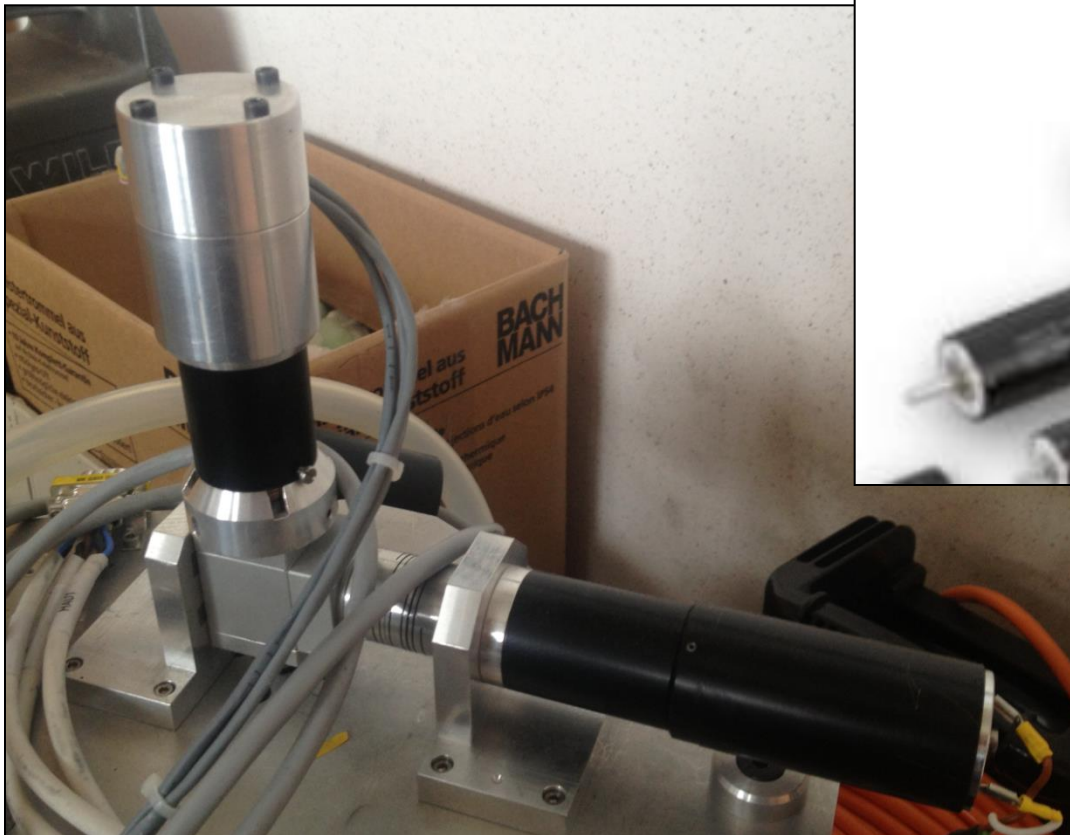
Switches and microswitches samples (300kGy)

- Irradiation of market accessible switches and microswitches used in our projects (and for future projects purposes)
 - ✓ Amount of pieces ~30
 - ✓ Dimensions of samples (length/height/width up to 50mm)



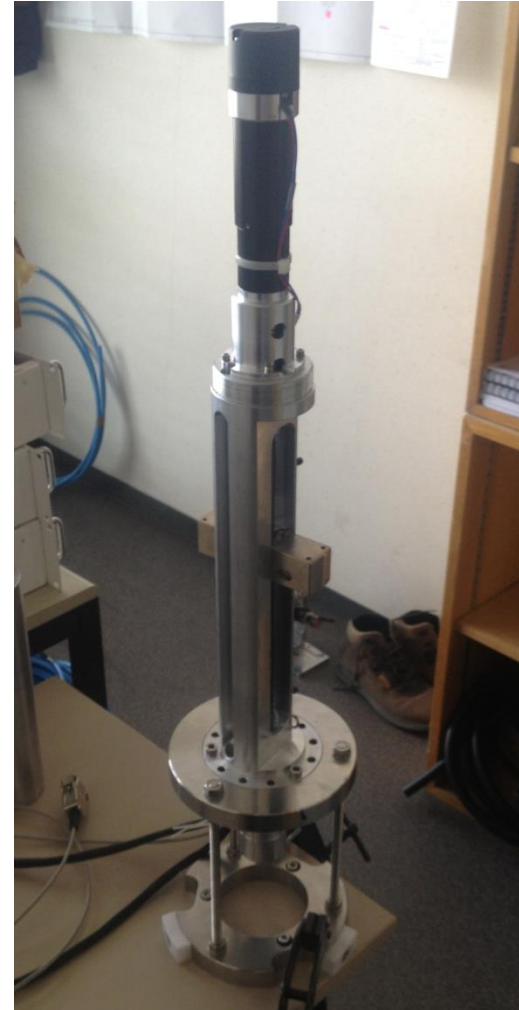
MAXON MOTOR equipment (300kGy)

- **Passive irradiation up to 300kGy**
 - ✓ 2 motors + 2 resolvers + 2 gearboxes
 - ✓ No intermediate steps needed
 - ✓ Components accesible after mid July 2013



Filling/Purging device (300kGy) - TENTATIVE

- **Passive irradiation up to 300kGy**
 - ✓ 2 intermediate step: 100 kGy, 300 kGy
 - ✓ Intermediate measurements according to delivered procedure
 - ✓ Device dimensions: height ~700mm, diameter ~160mm



Wire displacer (500kGy) - TENTATIVE

■ Passive irradiation up to 300kGy

- ✓ 2 intermediate steps: 100 kGy, 300 kGy
- ✓ Intermediate measurements using delivered test bench

