

Planning 2008



Ingrid-Maria Gregor
DESY

JRA1 Meeting, Hamburg January 30th 2008



Open Questions

- ❑ When and where will the telescope be used ?
- ❑ When do we need the new EUDRB ...
 - ❑ What functionality does the EUDRB need -> reading M22 ?
- ❑ Testbeam with Mimosa22 as DUT -> can we create a produced for Mimosa 22?
 - ❑ DESY and Geneva?
 - ❑ How to incorporate the trigger ?

EUDET Telescope on Tour!

- ❑ Current TB planning for CERN H6 (Emmanuelle Perez)

1 week

EUDET PS/T10

July 23 -> July 30

1 week

Monopix H6

July 30 -> August 6

2 weeks

EUDET H6

August 6 -> August 20

1 week

DEPFET H6

August 20 -> August 27

1 week

LCFI H6

August 27 -> Sept. 3

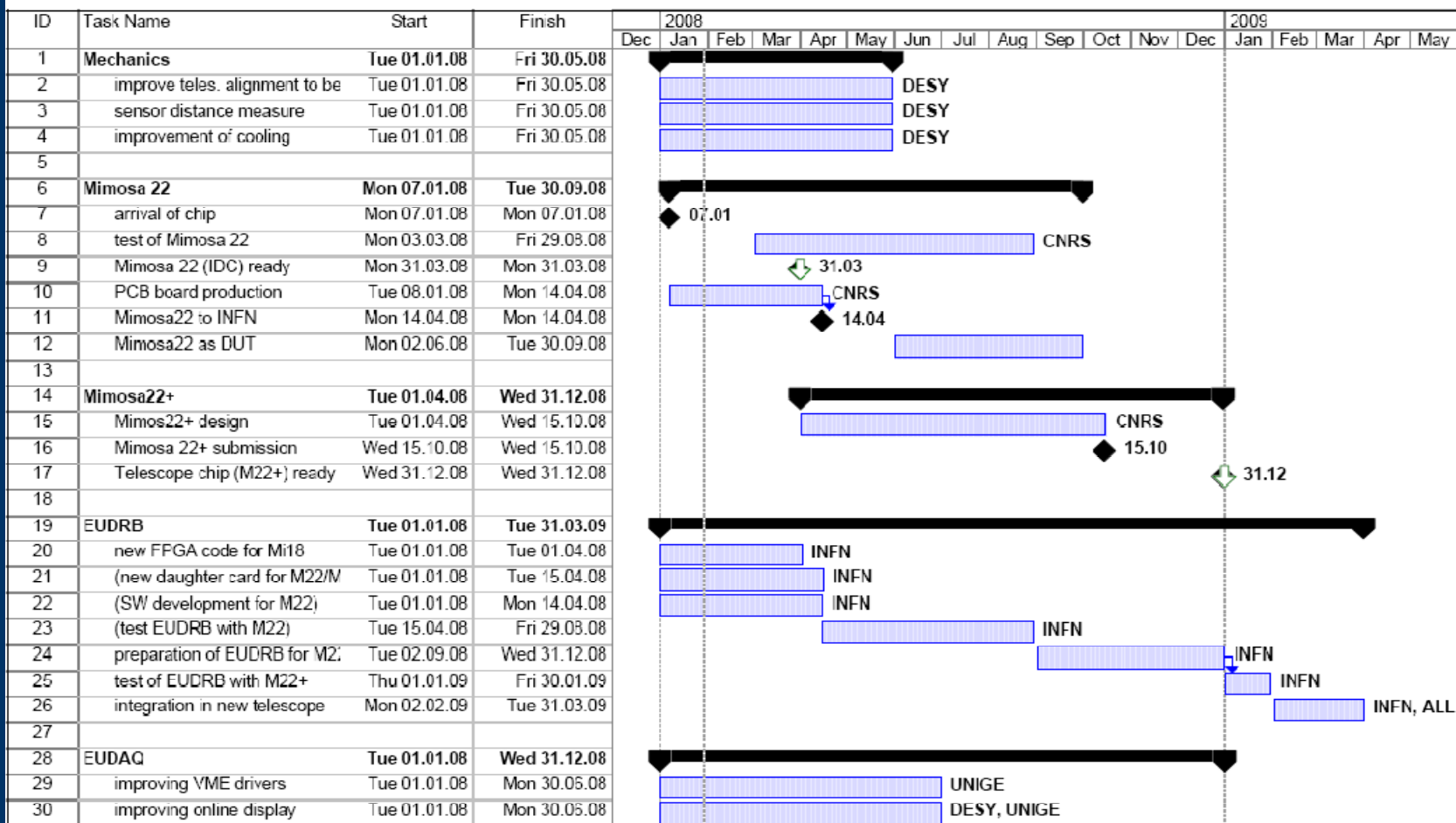
1 week

SiLC?

September 3 -> Sept. 10 ??

- ❑ Telescope at Cadarache ?
- ❑ Interest to use telescope at DESY
 - ❑ SiLC: want to use it already end of May at CERN
 - ❑ BeamCAL probably in September at DESY
 - ❑ ...

Planning 2008



Project: JRA1_2007
Date: Tue 29.01.08

Task



Milestone



External Tasks



Split



Summary



External Milestone



Progress



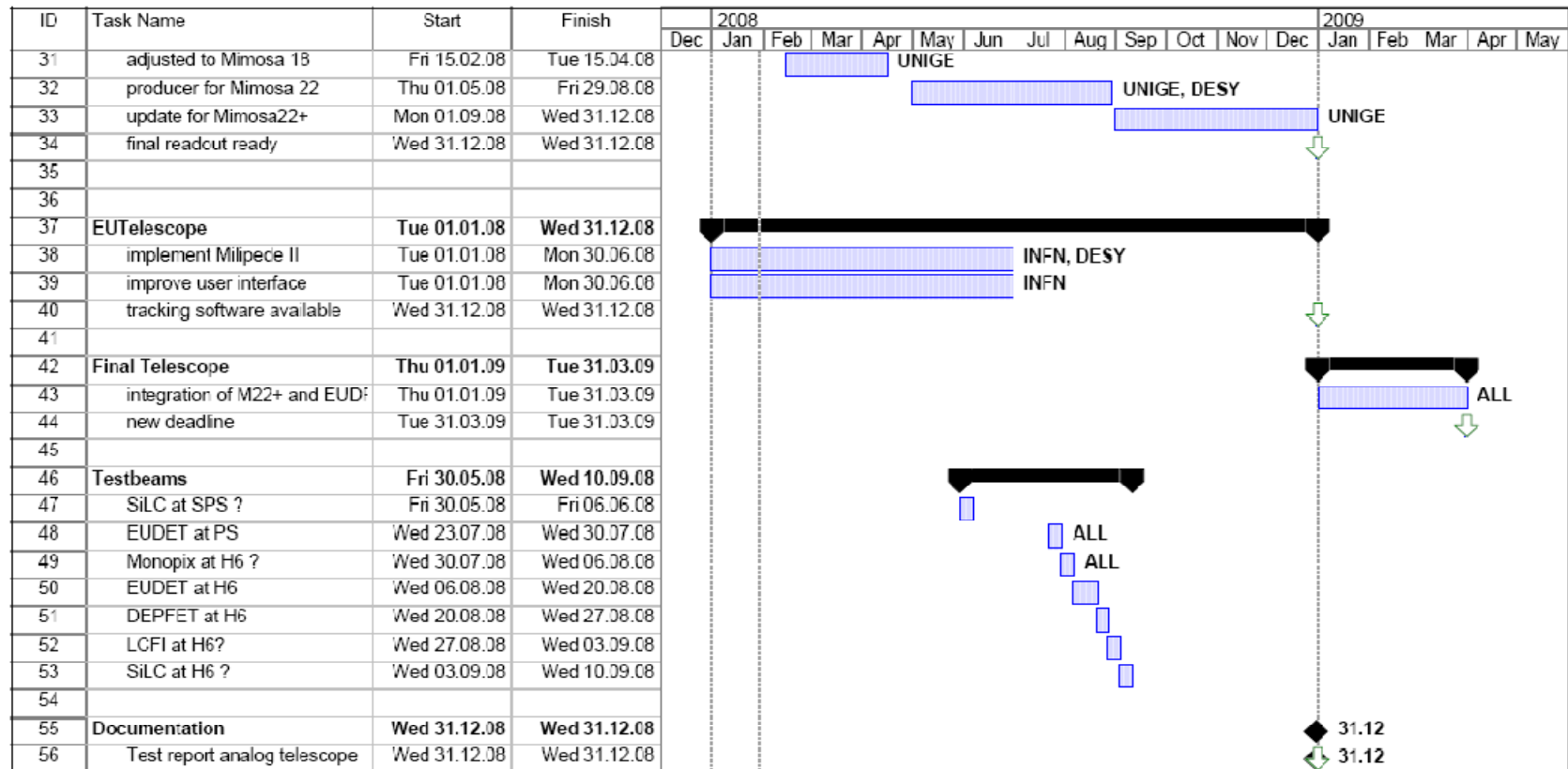
Project Summary



Deadline



Planning 2008



Project: JRA1_2007
Date: Tue 29.01.08

Task		Milestone		External Tasks	
Split		Summary		External Milestone	
Progress		Project Summary		Deadline	