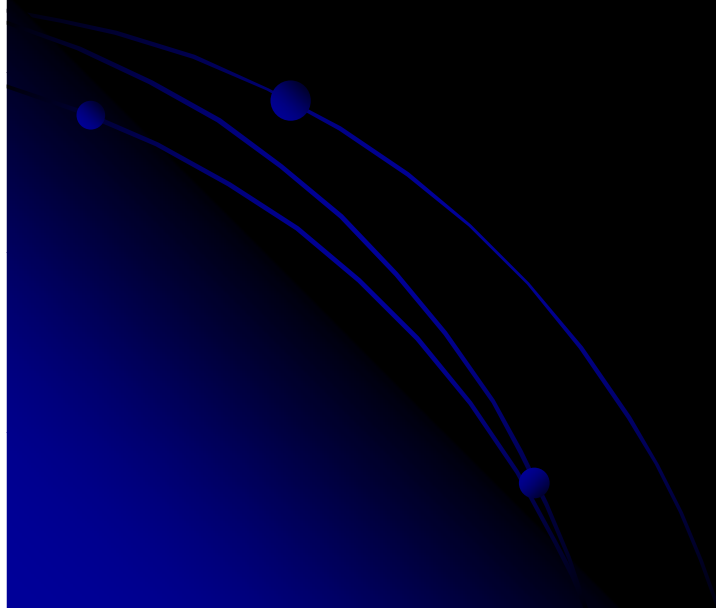


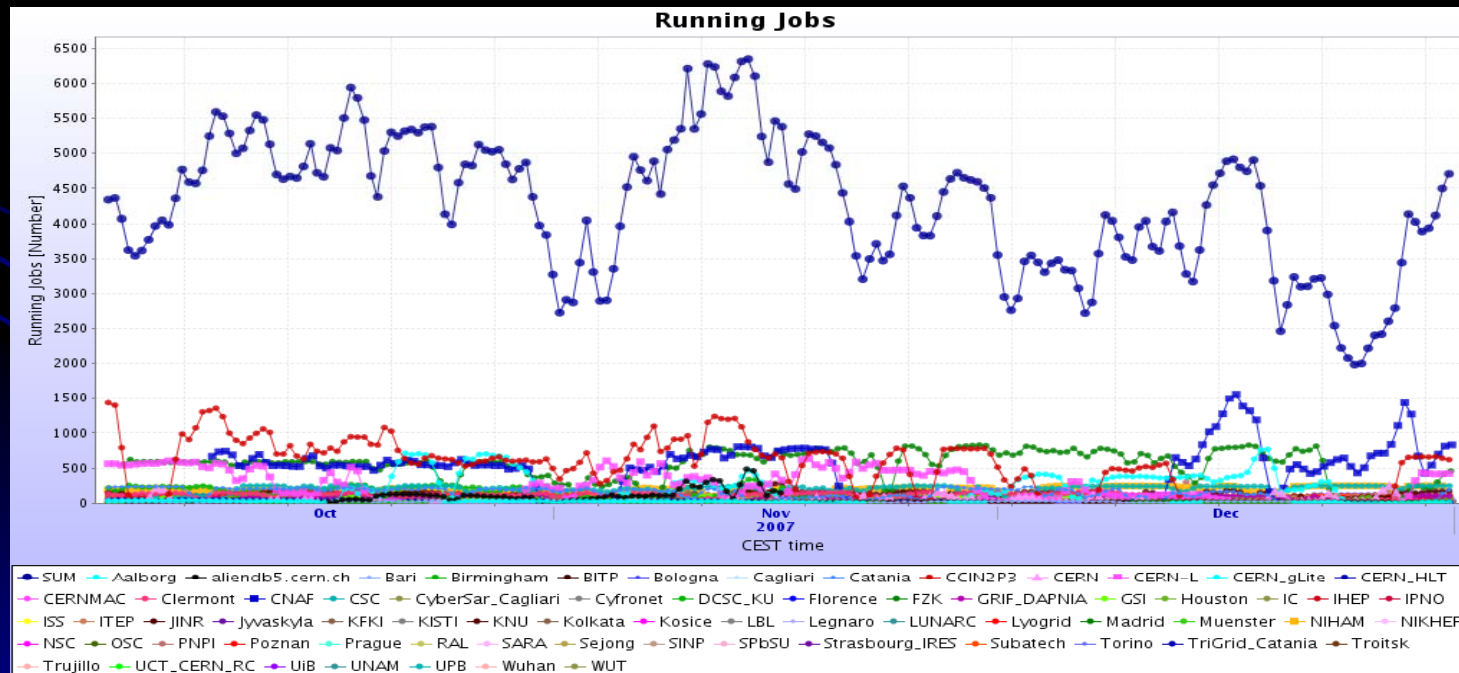


# ALICE Quarterly Report 2007Q4



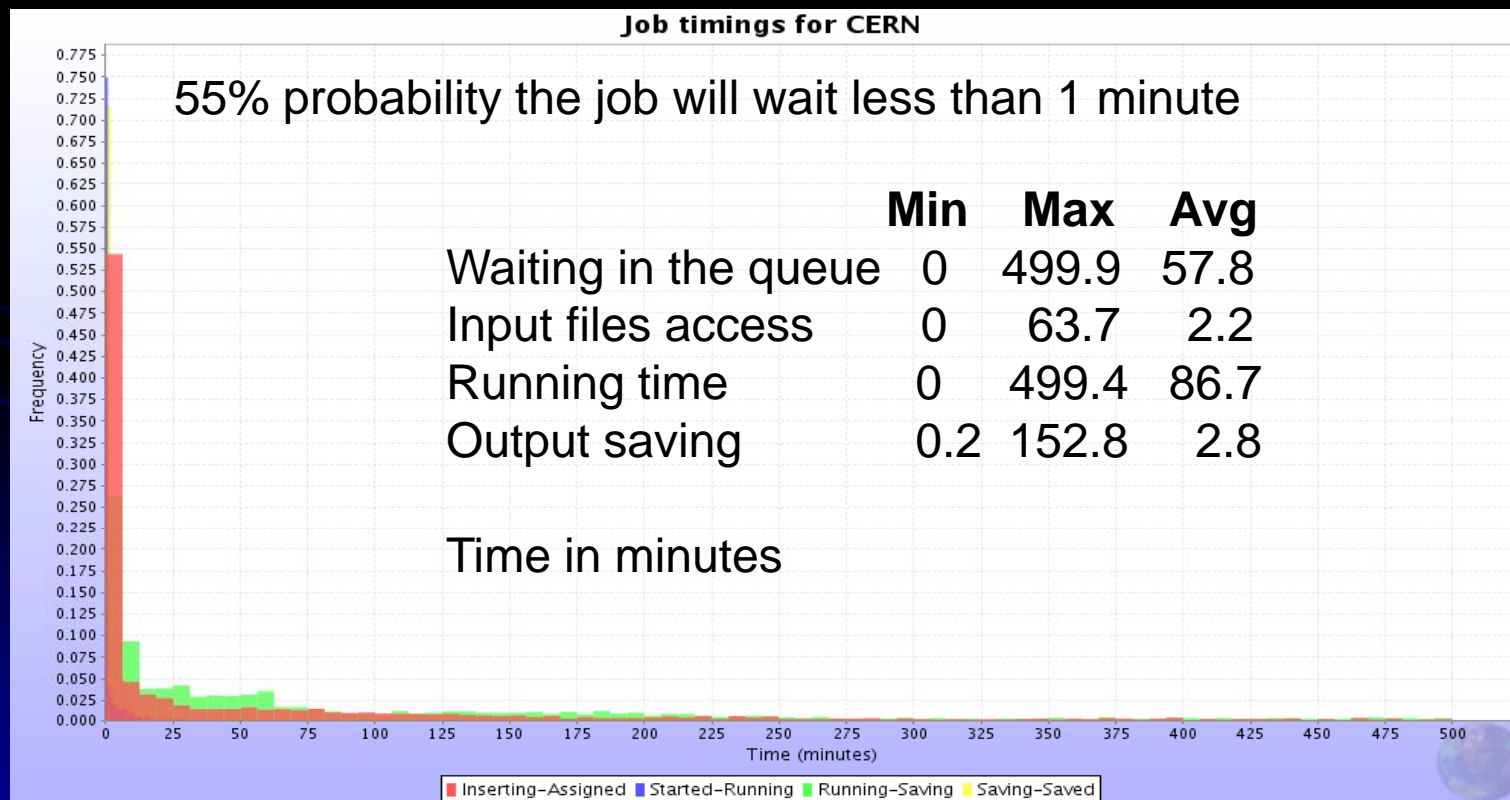
# Ongoing production activities

- Continuous MC production
- Very good site and services availability (including the Christmas break)



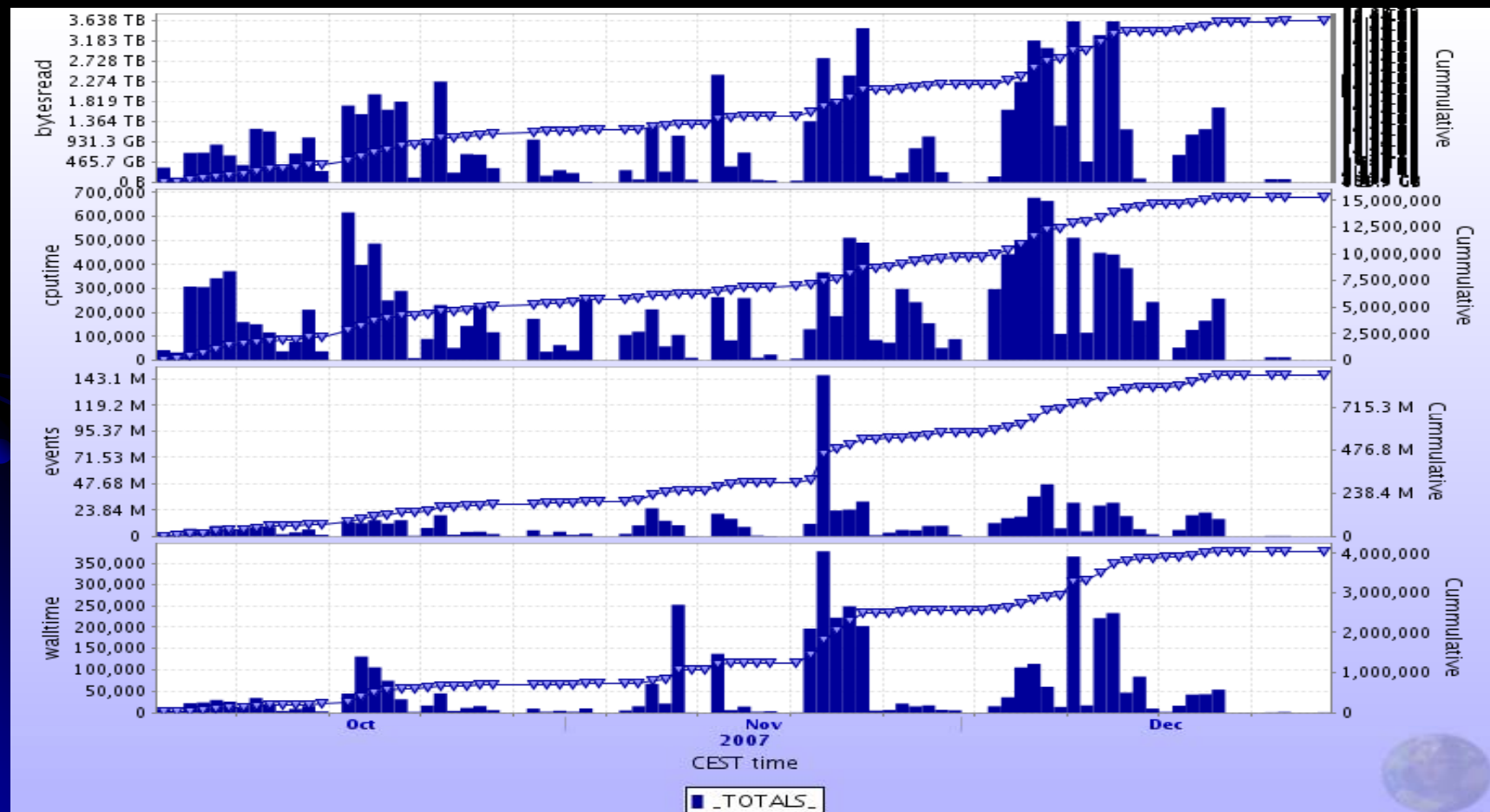
# Ongoing analysis activities

- Increased number of Grid users
- Tuning of priorities to minimize user waiting times

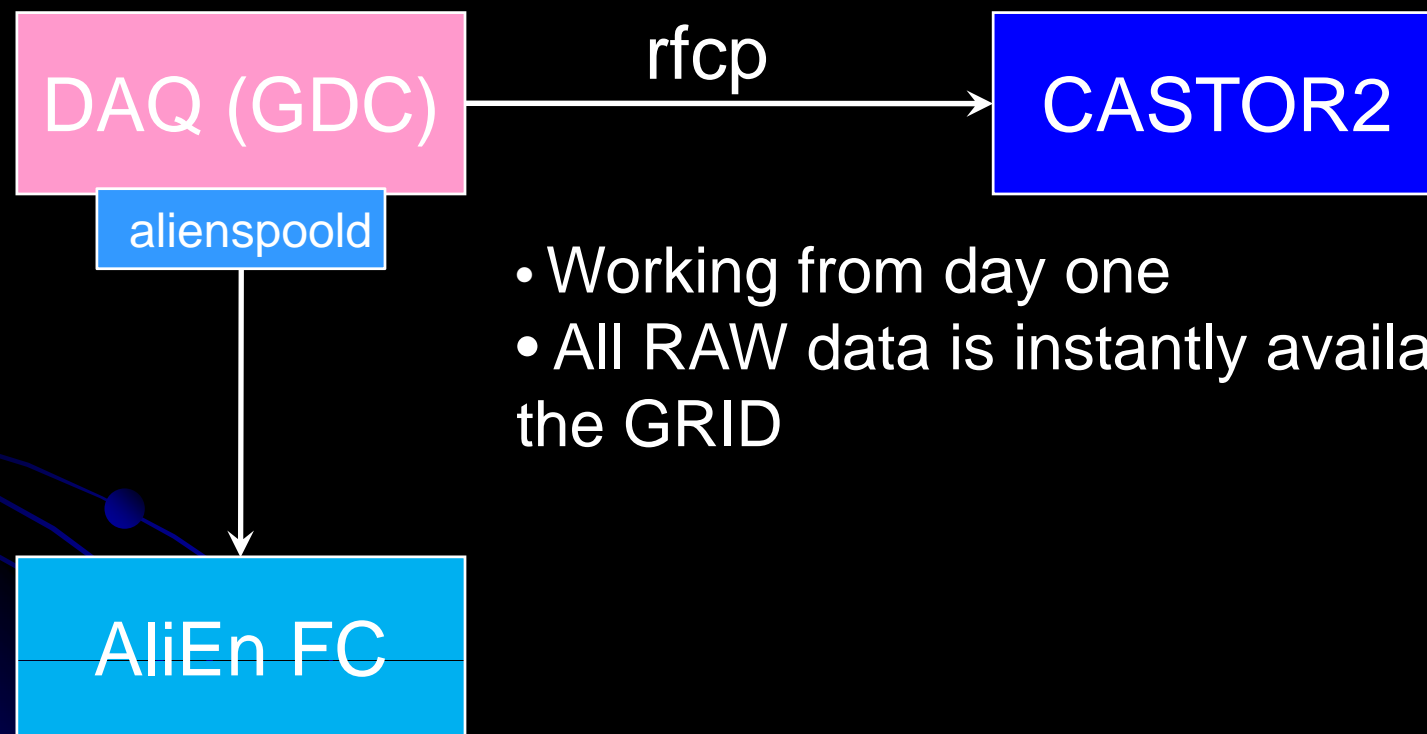


# Ongoing analysis activities (2)

- Usage of CAF/PROOF at CERN – chaotic analysis
- Disk and CPU quotas introduced



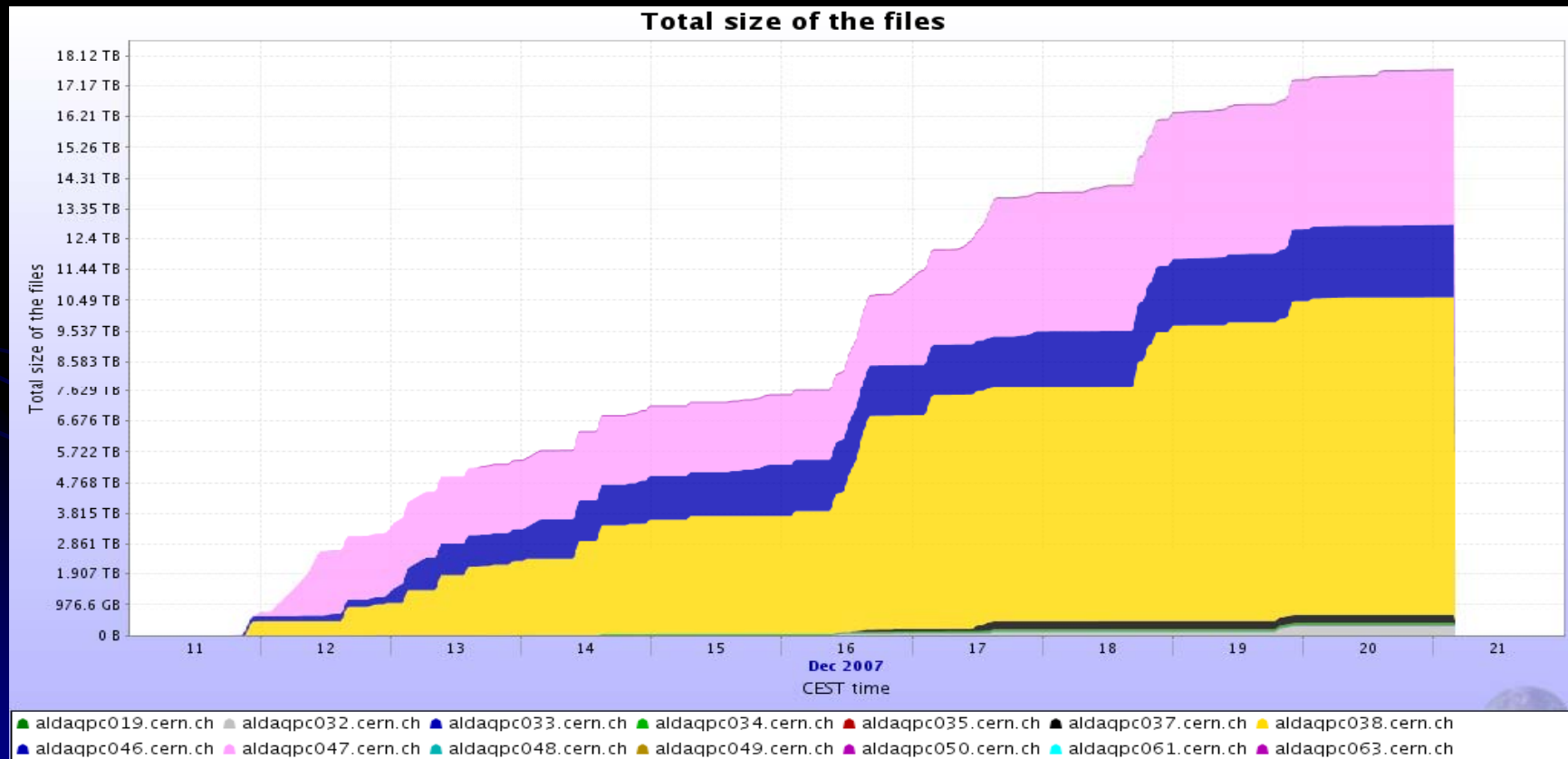
# FDR Phase I – Data registration



- Working from day one
- All RAW data is instantly available on the GRID

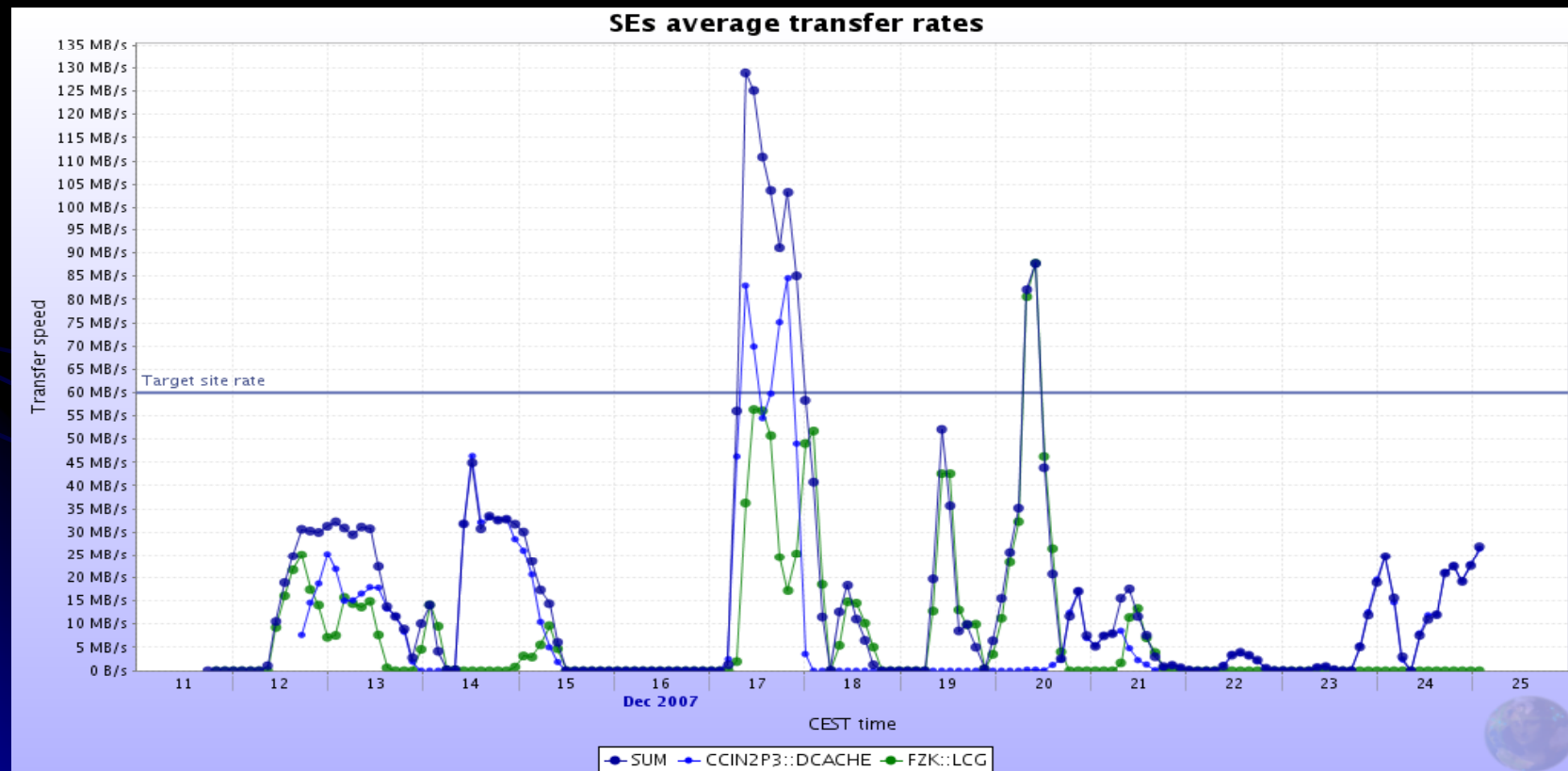
# FDR Phase I - RAW data volume and rates

- 17.5TB total written, 18MB/sec – 1/3 of p+p rate
- Expected 30MB/s (½ of p+p rate) in February CCRC'08



# Replication of RAW data T0->T1

- Running quasi-online, following the registration of RAW at CERN through *FTS*
- Export to 2 of the big ALICE T1s (GridKA, CCIN2P3)



## FDR Phase I – Conditions data gathering

- Conditions data collection - in operation from day one (Shuttle system to Offline CondDB)
- All data source components ready and integrated
  - DAQ/DCS/HLT databases and file servers
  - Focus is now on having a full complement of conditions data (and the corresponding online software) for all detectors
- Conditions data access on the Grid is OK



# FDR Phase I - Data production

- General status – OK
  - Systematic production of all RAW data completed in January (Pass I at T0)
  - Detector experts are verifying the code and detector performance
  - FDR Phase II – simultaneous reconstruction at T0/T1
- Release policy for next period (up to FDR Phase III) defined
  - Especially important for the shared code base with ALICE DAQ/HLT

# Milestones completed since last Q-report

- MS-120 oct 07: MC raw data for FDR
  - Done
- MS-121 oct 7: on line DA and shuttle integrated in DAQ
  - Done
- MS-122 oct 07: FDR Phase II
  - postponed to February 2007
- New milestones
  - MS-124 Feb. 08: Start of FDR Phase II
  - MS-125 Apr 08: Start of FDR Phase III
  - MS-126 Feb 08: Ready for CCRC 08
  - MS-127 Apr 08: Ready for CCRC 08