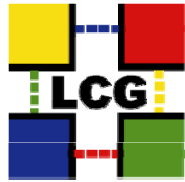




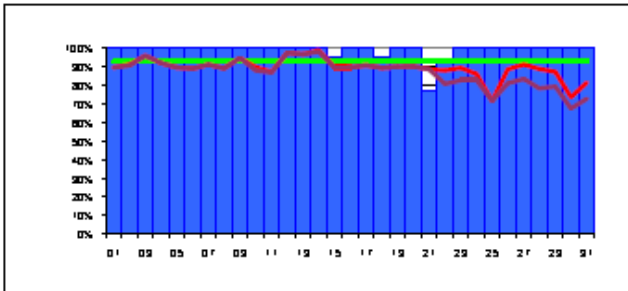
# Reliability Reports – January 2008

[http://lcg.web.cern.ch/LCG/MB/availability/site\\_reliability.pdf](http://lcg.web.cern.ch/LCG/MB/availability/site_reliability.pdf)

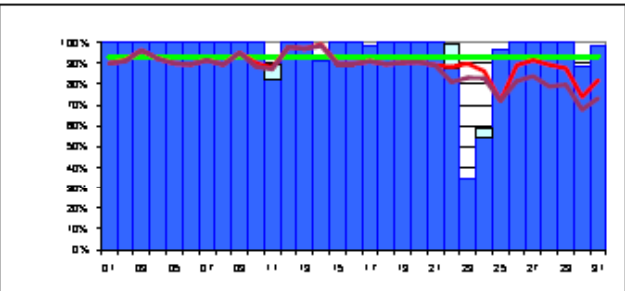


# Daily Data – January 2008

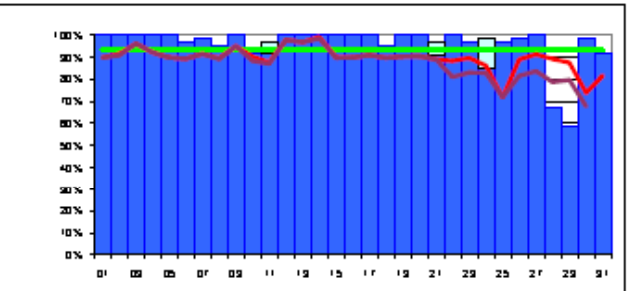
	CERN-PROD	FZK-LCG2	IN2P3-CC	INFN-T1	RAL-LCG2	SARA-MATRIX	TRIUMF-LCG2	Taiwan-LCG2	USCMS-FNAL-WC1	PIC	BNL-LCG2	average reliabilities	target	NDGF
1	100%	100%	100%	97%	80%	0%	100%	100%	100%	100%	100%	90%	93%	100%
2	100%	100%	100%	100%	59%	37%	100%	100%	100%	100%	100%	91%	93%	100%
3	100%	100%	100%	97%	100%	91%	100%	100%	89%	100%	75%	96%	93%	100%
4	100%	100%	100%	13%	100%	100%	100%	100%	92%	100%	100%	92%	93%	100%
5	100%	100%	100%	1%	100%	100%	100%	100%	97%	100%	79%	90%	93%	100%
6	100%	100%	97%	7%	100%	96%	100%	100%	97%	100%	73%	89%	93%	100%
7	100%	100%	98%	13%	100%	100%	100%	96%	89%	100%	100%	91%	93%	100%
8	100%	100%	95%	0%	100%	100%	100%	100%	100%	100%	91%	89%	93%	86%
9	100%	100%	100%	49%	100%	96%	100%	100%	94%	100%	100%	95%	93%	100%
10	100%	100%	92%	22%	100%	100%	100%	100%	86%	96%	84%	90%	93%	100%
11	100%	82%	92%	33%	100%	91%	85%	100%	89%	100%	78%	88%	93%	100%
12	100%	100%	100%	100%	100%	95%	95%	100%	82%	100%	100%	98%	93%	100%
13	100%	100%	100%	85%	100%	100%	89%	100%	87%	100%	100%	97%	93%	100%
14	100%	91%	100%	100%	100%	98%	100%	100%	98%	100%	100%	99%	93%	100%
15	95%	100%	100%	90%	97%	5%	100%	100%	91%	100%	100%	90%	93%	100%
16	100%	100%	100%	98%	100%	0%	95%	100%	96%	100%	100%	90%	93%	87%
17	100%	98%	100%	100%	100%	0%	96%	96%	100%	100%	100%	91%	93%	100%
18	95%	100%	95%	100%	100%	0%	95%	100%	94%	95%	100%	90%	93%	100%
19	100%	100%	100%	98%	100%	0%	100%	100%	84%	100%	100%	90%	93%	100%
20	100%	100%	100%	100%	100%	0%	95%	100%	90%	100%	100%	90%	93%	100%
21	77%	100%	91%	98%	100%	0%	100%	100%	100%	100%	100%	89%	93%	100%
22	94%	87%	100%	59%	91%	n/a	100%	100%	91%	100%	100%	88%	93%	49%
23	100%	35%	97%	98%	100%	100%	100%	100%	95%	100%	100%	90%	93%	50%
24	100%	54%	85%	100%	100%	67%	100%	100%	91%	100%	63%	86%	93%	74%
25	100%	96%	97%	98%	95%	0%	100%	100%	85%	68%	12%	72%	93%	12%
26	100%	100%	98%	100%	100%	n/a	100%	100%	100%	0%	79%	89%	93%	100%
27	100%	100%	100%	98%	100%	n/a	100%	87%	91%	53%	75%	91%	93%	100%
28	100%	100%	67%	100%	97%	n/a	100%	88%	94%	83%	63%	89%	93%	87%
29	100%	100%	59%	100%	28%	n/a	100%	96%	92%	100%	87%	87%	93%	100%
30	100%	88%	98%	8%	20%	n/a	94%	46%	96%	100%	63%	74%	93%	100%
31	100%	98%	92%	0%	100%	n/a	62%	100%	84%	100%	62%	82%	93%	100%
reliability	99%	94%	95%	70%	92%	57%	97%	97%	93%	93%	91%	89%	93%	92%



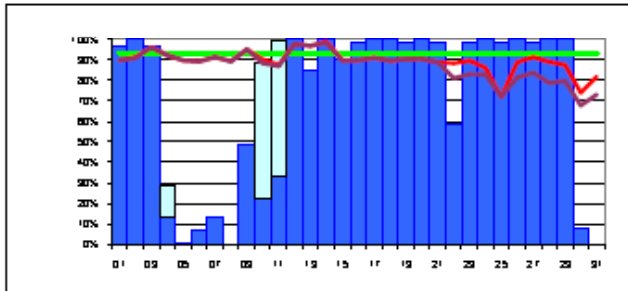
**CERN-PROD** avail: 99% reliability: 99%



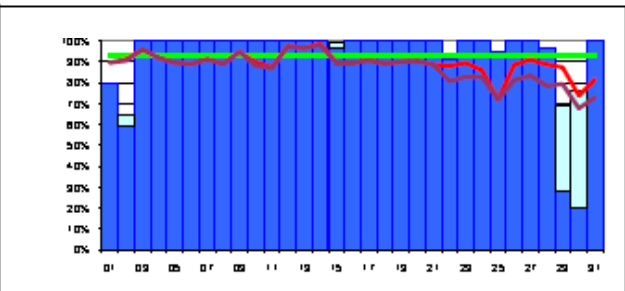
**FZK-LCG2** avail: 94% reliability: 94%



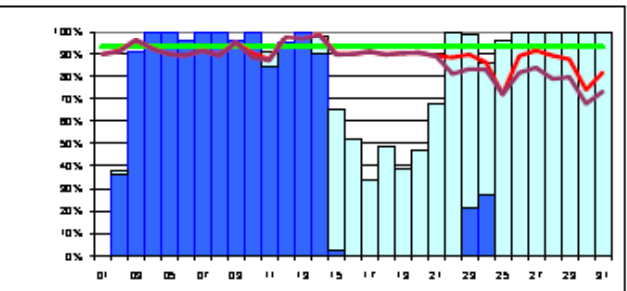
**IN2P3-CC** avail: 95% reliability: 95%



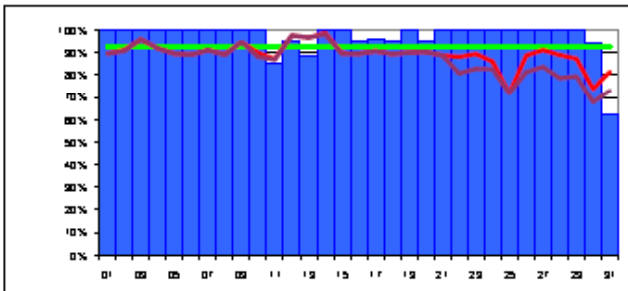
**INFN-T1** avail: 70% reliability: 70%



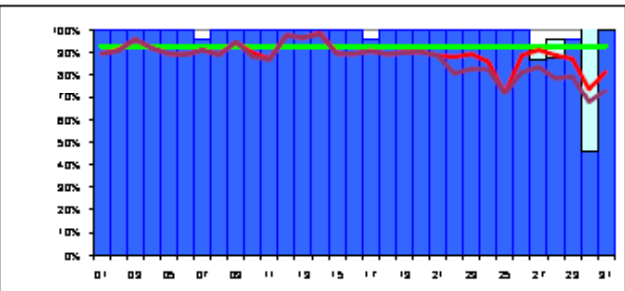
**RAL-LCG2** avail: 92% reliability: 92%



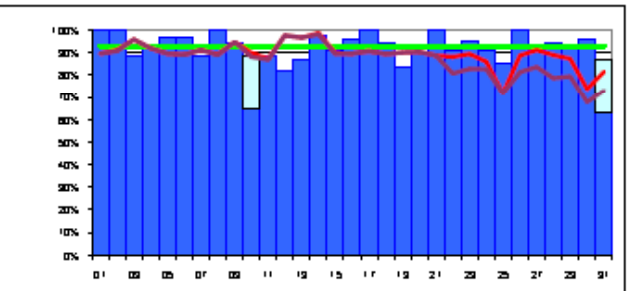
**SARA-MATRIX** avail: 40% reliability: 57%



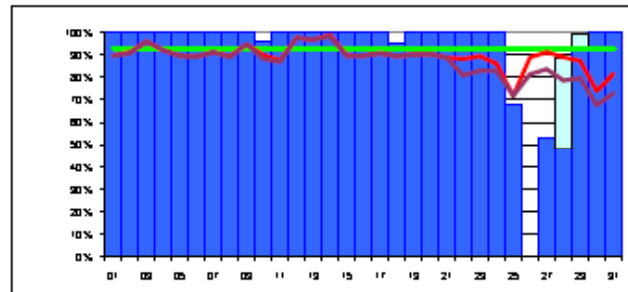
**TRIUMF-LCG2** avail: 97% reliability: 97%



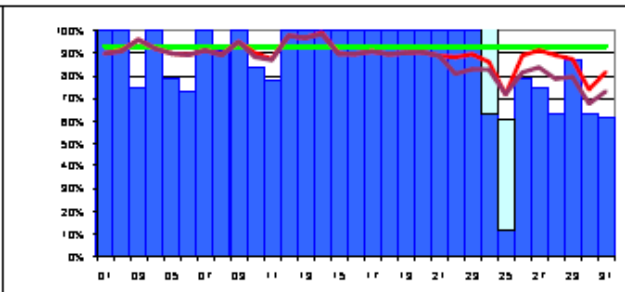
**Taiwan-LCG2** avail: 97% reliability: 97%



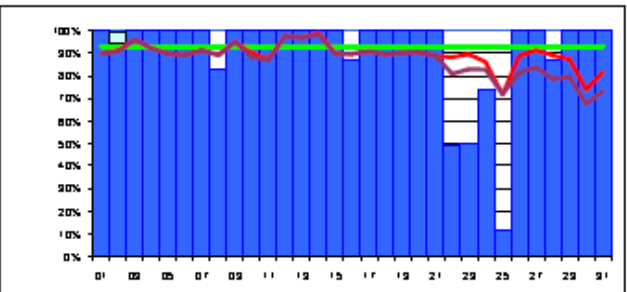
**USCMS-FNAL-WC1** avail: 91% reliability: 93%



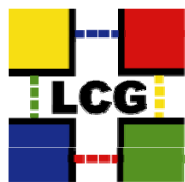
**PIC** avail: 92% reliability: 93%



**BNL** avail: 91% reliability: 91%



**NDGF** avail: 91% reliability: 92%



# Reliability from Apr 07 to Jan 08

Site	Apr 07	May 07	Jun 07	Jul 07	Aug 07	Sept 07	Oct 07	Nov 07	Dec 07	Jan 08
CERN	96	90	96	95	99	100	99	98	100	99
DE-KIT (FZK)	79	79	48	75	67	91	76	85	90	94
FR-CCIN2P3	95	94	88	94	95	70	90	84	92	95
IT-INFN-CNAF	93	87	67	82	70	80	97	91	96	70
UK-T1-RAL	87	87	87	98	99	90	95	93	91	92
NL-T1	92	99	75	92	86	92	89	94	50	57
CA-TRIUMF	73	95	95	97	97	95	91	94	96	97
TW-ASGC	92	98	80	83	83	93	51	94	99	97
US-FNAL-CMS	85	77	77	92	99	89	75	79	88	93
ES-PIC	95	77	79	96	94	93	96	95	96	93
US-T1-BNL	89	98	94	75	71	91	89	93	44	91
NDGF	n/a	n/a	n/a	n/a	n/a	n/a	89	98	100	92
Target	88	88	91	91	91	91	91	91	93	93
Target + 90% target	7 + 3	6 + 3	3 + 2	7 + 2	6 + 2	7 + 2	5 + 4	9+2	6 + 4	7+3

Avg. 8 best sites: Jun 87% Jul 93% Aug 94% Sept 93% Oct 93% Nov 95% Dec 96% Jan 95%  
 Avg. all sites: Jun 80% Jul 89% Aug 88% Sept 89% Oct 86% Nov 92% Dec 87% Jan 89%

\* BNL: LCG/gLite CE probed by SAM but not installed with the SL4 upgrade



## Summary of Issues and Solutions Reported

<b>Description</b>	
<b>SRM</b>	<p><b>SRM DB slowing down</b> → Restarted DB</p> <p><b>SRM Time-outs</b> → Increased time-out time of SAM test</p> <p><b>BDII Overload and Time-out</b> → Increased time-out time of SAM test</p>
<b>Operational Issues</b>	<b>Scheduled down-times take longer than planned</b>
<b>Tools (SAM, GOCDDB)</b>	<p><b>US-BNL-T1: Problem from last month still present and the reliability cannot be recalculated in GridView</b></p> <p><b>FR-CCIN2P3: Unknown reasons and SAM can only show details of 7 days back</b> → Being checked.</p>