

# BigPanDA Monitoring Tutorial

User's point of view

Michal Svatoš

Institute of Physics, AS CR, v. v. i.

Shifters Jamboree/Tutorial

4.12.2014

# Introduction

Lets start with a big thanks to BigPanda developers for great tasks/jobs monitoring tool located at:

`http://bigpanda.cern.ch`

## General points

- BigPanda is still in development  $\Rightarrow$  in some time, pages I will show can look differently
- Communication (Requests, problems,...):

ATLASPANDA JIRA tracker

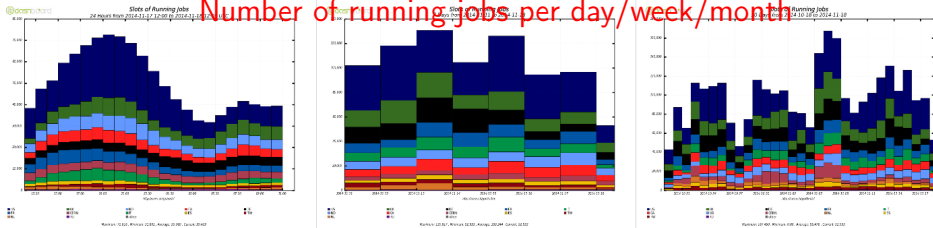
(`https://its.cern.ch/jira/browse/ATLASPANDA`)

examples of pages on my slides are shown for production jobs/tasks. Structure of analysis page is identical or very similar

# Main page

## Menu

## Number of running jobs per day/week/month



### Search

PanDA job ID or name

Batch ID

Task ID

Task name

Search

### News

- 20141116: Task\_job displays customized for event service
- 20141113: Dashboards show all (pre)active jobs, not just N hrs
- 20141113: Support URLs of form `.../jobs/?pandaid=firstid,secondid,...`
- 20141107: Task name search supports front and/or back wildcards
- 20141102: batchid search uses job name for single-job search
- 20141013: Support `date_from=2014-10-01&date_to=2014-10-03`
- 20141013: Support `earlierthan=Nhours, earlierthandays=Ndays` on URL
- 20141013: Filter duplicate jobs arising from archive transfer overlap
- 20141013: Include zero-job sites and test jobs in dashboards
- 20141013: [Locale links routed to Jarka's new filebrowser](#)

News

# Main page

Tasks for campaign	<input type="text"/>	<input type="button" value="Submit"/>
Tasks for project	<input type="text"/>	<input type="button" value="Submit"/>
Tasks for tag	<input type="text"/>	<input type="button" value="Submit"/>
Tasks for stream	<input type="text"/>	<input type="button" value="Submit"/>
Site	<input type="text"/>	<input type="button" value="Submit"/>
User	<input type="text"/>	<input type="button" value="Submit"/>
Dataset	<input type="text"/>	<input type="button" value="Submit"/>
File	<input type="text"/>	<input type="button" value="Submit"/>
Stalled jobs	in <input type="text" value="defined"/> for over <input type="text" value=""/> hours	<input type="button" value="Submit"/>
Stalled tasks	in <input type="text" value="registered"/> for over <input type="text" value=""/> hours	<input type="button" value="Submit"/>

Search

News

- 20141013: Creator job links on job pages now work for ages up to a year
- 20141013: Task list depth on user pages shortened to 7 days for speed.
- 20141010: Job pages provide links to creator job search for input files
- 20140923: Job pages directly link to object store based log tarballs
- 20140913: Link DEFT request page from task list and detail pages
- 20140912: On task page highlight input containers, hide datasets by default
- 20140911: Task name search supports wildcarding
- 20140911: Show wait time, duration for jobs not yet running, completed
- 20140818: Job attempt# off for user page, JEDI jobs. Not meaningful in JEDI.
- 20140818: Task attribute summary added to user page
- 20140817: Output container list added to task detail page
- 20140817: Support clarified. Use DAS7 list, as ever, for dist analysis support
- 20140817: curl retrieval of json task lists when curl in [the help](#)
- 20140817: Merge (and other non-retry) jobs supported as a relationship type
- 20140816: Cache lifetime 3min for all pages, documented in footer. Report issues
- 20140816: [Restructured help with consolidated help page](#)
- 20140815: Show prodsys1 tasknames in error summary
- 20140814: Task summaries (huge and slow) removed from non-task dashboards
- 20140814: Task state names in task list, detail pages link to state doc
- 20140814: Task list in user pages brought up to date, with input completion
- 20140814: Wildcarding implemented for taskname in task lists
- 20140813: Works on mobile. Still tuning to do. Report bad issues please.
- 20140813: Add task searches for campaign, project, stream, tag
- 20140813: Add project, stream and tag summary info to task lists
- 20140813: Auto redirect pre-JEDI task detail pages to old monitor
- 20140813: Show in, out datasets on user pages and job lists
- 20140813: Fill state colors in dashboard task, job summary tables
- 20140813: Filled color in the status cells for job and task pages
- 20140812: Campaign added to task list and detail pages
- 20140812: Task pages use new DEFT-friendly 'superstatus'. See task page help.
- 20140812: Stalled task search added
- 20140812: Improved job listings on user pages (matching job lists)
- 20140801: Job name links in job lists
- 20140801: Finished/failed job counts and %failed added to task error summary
- 20140801: Dashboards for task-based analysis, production job summaries

# Dashboard

Dashboard → Production jobs - Region view  
 - task/job stats distribution per clouds/sites

The screenshot shows the ATLAS PanDA monitor interface. A navigation menu at the top includes 'Dashboards', 'Tasks', 'Jobs', 'Errors', 'Users', 'Sites', 'Incidents', and 'Search'. The main content area is divided into several sections:

- Jobs in transferring state:** A table showing the distribution of jobs in transferring state across various regions. A red box highlights the 'By assigned (multi-cloud prod)' row, which shows 51 jobs in the US region.
- production task summary:** A large table summarizing task statistics by cloud and site. A red box highlights the 'UK' row, which shows 198 broken tasks.

Annotations in red text provide context for the highlighted data:

- 'Jobs in transferring state more than 36 hours' points to the 'By assigned (multi-cloud prod)' row.
- 'task summary by cloud, last 3 days' points to the 'production task summary' table.
- 'cloud/site summary of jobs ↓' points to the 'UK' row in the task summary table.

	CA	CERN	DE	ES	FR	IT	ND	NL	RU	TW	UK	US
By home cloud	2	1	50	0	5	11	0	0	0	0	9	3
By assigned (multi-cloud prod)	2	1	0	0	6	10	0	0	0	1	10	51

Cloud	nTask	reg	de	st	cl	run	prep	done	fail	finish	abrtg	abrtid	finishg	toprep	prepc	tobrok	broken	retry	inccs	refine
	113	33	0	0	0	0	0	0	0	0	0	23	0	0	0	0	3	0	0	0
CA	334	0	0	0	0	7	0	8	0	101	13	0	1	26	0	0	178	0	0	0
CERN	126	0	0	0	0	0	0	82	0	39	0	4	0	1	0	0	0	0	0	0
DE	262	0	0	0	0	0	0	19	0	77	0	30	2	5	1	105	2	21	0	0
ES	119	0	0	0	0	2	1	0	9	0	49	11	0	0	0	0	36	0	0	0
FR	330	0	0	0	0	1	9	0	24	0	126	9	3	0	20	0	138	0	0	0
IT	301	0	0	0	0	0	7	0	8	0	78	1	3	0	16	0	188	0	0	0
ND	131	0	0	0	0	0	4	0	22	0	23	1	0	0	34	0	47	0	0	0
NL	86	0	0	0	0	0	3	0	13	0	35	0	0	0	14	0	21	0	0	0
TW	83	0	0	0	0	0	3	0	2	0	56	0	0	0	0	0	22	0	0	0
UK	435	0	0	0	0	0	32	0	69	0	68	8	0	13	47	0	198	0	0	0
US	241	0	0	0	0	0	13	0	25	0	90	10	3	0	12	0	88	0	0	0

# Dashboard

Dashboard → Working group jobs

- task/job stats distribution per Working group

ATLAS PanDA monitor

PanDA working group dashboard

task summary by group

Generated 2014-11-18 12:54 UTC

Working group	nTask	scout	scld	run	prep	done	fail	finish	abrtg	abtrd	finishg	toprep	prepc	lobrok	broken	retry	Inceax	refine
AP_EXOT	60	1	0	14	0	0	0	0	0	0	0	0	0	0	0	0	0	0
AP_Higgs	1	0	0	0	0	0	1	0	0	0	0	0	0	0	0	0	0	0
AP_REPR	36	0	0	1	0	8	0	0	0	16	0	0	0	0	4	0	0	0
AP_TAUP	30	11	0	0	0	0	0	0	0	4	0	0	0	0	4	0	0	0
AP_Top	4	0	0	0	0	0	0	0	0	0	0	0	0	0	0	0	0	0
AP_VALI	35	1	0	1	0	7	0	0	0	3	0	0	0	0	1	0	0	0
AP_physics	1	0	0	0	0	0	0	0	0	0	0	0	0	0	0	0	0	0
GP_DAPR	124	0	0	0	0	89	0	32	0	2	0	1	0	0	0	0	0	0
GP_EXOT	55	0	0	0	0	36	0	18	0	1	0	0	0	0	0	0	0	0
GP_HIGG	5	0	0	0	0	2	0	3	0	0	0	0	0	0	0	0	0	0
GP_PHYS	1958	0	0	0	0	7	39	0	169	0	454	52	10	12	281	0	0	0
GP_STDM	1	0	0	0	0	0	0	0	0	1	0	0	0	0	0	0	0	0
GP_SUSY	150	0	0	0	0	10	0	136	2	2	0	0	0	0	0	0	0	0
GP_TAUP	72	0	0	0	0	47	0	25	0	0	0	0	0	0	0	0	0	0
GP_THLT	2	0	0	0	0	0	0	0	0	2	0	0	0	0	0	0	0	0

job summary by group



# Dashboard

Dashboard → Production tasks

- task/job stats distribution per cloud/task

ATLAS PanDA monitor | Dashboards ▾ | Tasks ▾ | Jobs ▾ | Errors ▾ | Users ▾ | Sites ▾ | Incidents ▾ | Search | Prodsys ▾ | Services ▾ | VO ▾ | Help ▾

PanDA production dashboard, v1

All jobs

Generated 2014-11-18 14:15 UTC

production task summary

over state name to see full name. Task state documentation

Cloud	nTask	msg	df	def	actfd	run	prep	done	fail	finish	abrtg	abrtfd	trchng	logprp	proprp	jobbk	broken	retry	inccrs	refine
Cloud	112	35	10	0	0	0	0	0	0	0	0	23	0	0	0	0	3	0	0	0
CA	334	0	0	0	8	0	101	13	0	1	26	0	0	0	0	0	178	0	0	0
CERN	126	0	0	0	82	0	39	0	4	0	1	0	0	0	0	0	0	0	0	0
DE	262	0	0	0	77	0	30	2	5	1	105	0	0	0	0	0	23	0	0	0
ES	119	0	1	0	9	0	40	11	0	0	11	0	0	0	0	0	36	0	0	0
FR	330	0	0	0	0	1	9	0	24	0	126	9	3	0	0	20	0	0	0	138
IT	301	0	0	0	0	0	7	0	8	0	78	1	3	0	0	16	0	0	0	188
ND	131	0	0	0	0	0	4	0	22	0	23	1	0	0	0	34	0	0	0	47
NL	86	0	0	0	0	0	3	0	13	0	35	0	0	0	0	14	0	0	0	21
TW	84	0	0	0	1	0	3	0	2	0	56	0	0	0	0	0	22	0	0	0
UK	435	0	0	0	0	0	32	0	69	0	68	8	0	13	47	0	0	0	0	198
US	241	0	0	0	0	0	13	0	24	1	90	10	3	0	0	12	0	0	0	98

task summary by cloud, last 3 days

job summary for active tasks

Job summary for 300 recently active production tasks. display\_limit=300

	Status	nJobs	defined	waiting	assigned	throttled	activated	sent	starting	running	holding	transferring	finished	failed	cancelled	% failed
mc14_8TeV_150114.Harwigg_EE3CTEQRL1_j4jkt_J24W.recon.e1373_s1933_s1911_5591.task		800	0	0	0	0	0	0	0	2	0	10	785	3	0	0
mc14_8TeV_167741.Sherpa_CT10_WemMassiveCBP0_CJeflR@Veto.recon.e1585_s1933_s1911_5591.task		1500	0	0	0	0	19	0	0	0	0	140	1338	6	0	0
mc14_8TeV_167749.Sherpa_CT10_ZeeMassiveCBP0_BFfilter.recon.e1585_s1933_s1911_5591.task		807	0	0	0	0	0	0	0	0	0	0	799	8	0	0
mc14_8TeV_167806.Sherpa_CT10_ZnumMassiveCBP0_140_BFfilter.recon.e1620_s1933_s1911_5591.task		800	0	0	0	0	14	0	0	1	0	24	580	1	0	0
mc14_8TeV_167831.Sherpa_CT10_ZnumMassiveCBP0_500_CFilter@Veto.recon.e1714_s1933_s1911_5591.task		10	0	0	0	0	0	0	0	0	0	1	9	0	0	0
mc14_8TeV_167832.Sherpa_CT10_ZnumMassiveCBP0_280_500_CVeto@Veto.recon.e1714_s1933_s1911_5591.task		830	0	0	14	0	24	0	6	21	2	27	646	90	0	12
mc14_8TeV_150122.Pythia8_AU2CTEQRL1_gmmajet_binmed.recon.e1407_s1933_s1911_5591.task		1004	0	0	0	0	56	0	0	4	1	12	922	9	0	0
mc14_8TeV_150124.Pythia8_AU2CTEQRL1_gmmajet_binmed300.recon.e1407_s1933_s1911_5591.task		1001	0	0	0	0	0	0	0	0	0	1	996	4	0	0

# Tasks

## Tasks→Production

- type, campaign, group, used, efficiency, priority, timing,...

ATLAS PanDA monitor Dashboards Tasks Jobs Errors Users Sites Incidents Search Prodsys Services VO Help

PanDA JEDI task list, last 12 hours (limit 6000 per task) All limit=6000 Generated 2014-11-25 16:08 UTC

### Task attribute summary, 2241 tasks

Analysis	
campaign (5)	mc11c (5) MC12b (7) Production MC14a (465) test1 (3)
cloud (11)	CA (153) CERN (228) Event service FR (187) IT (141) ND (84) NL (81) TW (69) UK (286) US (257)
corecount (3)	1 (2076) 4 (27) 8 (138)
workinggroup (20)	AP_EXOT (86) AP_HIGG (217) AP_Higgs (3) AP_physics (1) AP_REPR (82) AP_STDM (66) AP_SUSY (192) AP_TAUP (46) AP_Top (4) AP_VALI (51) GP_DAPR (206) GP_EXOT (74) GP_FTAG (4) GP_HIGG (16) GP_PHYS (601) GP_STDM (47) GP_SUSY (202) GP_TAUP (71) GP_THLT (17) GP_TOPQ (228)

### task attribute summary

### 2241 tasks, sorted by jeditaskId

### tasks details

ID Parent	Task name TaskType/ProcessingType Campaign Group User Logged status	Task status <a href="#">Nfiles</a>	Input files finish% fail% Nfinish Nfail	Modified	State changed	Priority
4452307	ced40adf-6147-442d-8bb4-d922959cd22d prod/simul test1 AP_Higgs pandasrv1 JIRA	done 12	100% 12	2014-11-25 16:08	11-25 16:08	9002
4452115 4452114	mc14_13TeV.204641.MadGraphPythia_AUET2BCTEQ6L1_SM_GG_onestepCC_1865_945_25.merge.e3313_a266_a265_r5853 prod/merge MC14a AP_SUSY mehnhase JIRA RequestID:1147 pending until parent produces input	registered		2014-11-25 15:31	11-25 15:31	820
4452114 4452113	mc14_13TeV.204641.MadGraphPythia_AUET2BCTEQ6L1_SM_GG_onestepCC_1865_945_25.recon.e3313_a266_a265 prod/recon MC14a AP_SUSY mehnhase JIRA RequestID:1147 pending until parent produces input	registered		2014-11-25 15:31	11-25 15:31	540
4452113 4452111	mc14_13TeV.204641.MadGraphPythia_AUET2BCTEQ6L1_SM_GG_onestepCC_1865_945_25.simul.e3313_a266 prod/simul MC14a AP_SUSY mehnhase JIRA RequestID:1147	registered		2014-11-25 16:08	11-25 15:31	130



## Jobs → Production

ATLAS PanDA monitor Dashboards Tasks Jobs Errors Users Sites Incidents Search Prosys Services VO Help

PanDA jobs, last 12 hours (limit 6000 per table). Params: limit= All Generated 2014-11-25 16:39 UTC

**16465 jobs in this selection**

Job modification times in this listing range from 2014-11-25 16:39.

Job current priorities in this listing range from 120 to 1.

Group production

Job attribute summary Sort by count, alpha

atlasrelease (21)	Atlas-16.6.7 (440) Atlas-17.0.6 (1) 17.2.5 (2) Atlas-17.2.6 (12) Atlas-19.1.X.Y-VAL-AtlasDerivation (1) A	Event service Atlas-17.2.1 (2256) Atlas-17.2.10 (17) Atlas-17.2.11 (4357) Atlas-17.2.13 (38) Atlas-17.2.14 (53) Atlas-17.2.2 (1195) Atlas-17.3.10 (14) Atlas-17.5.0 (94) Atlas-17.7.3 (1210) Atlas-17.7.4 (1) Atlas-19.0.3 (174) Atlas-19.1.1 (786) Atlas-19.1.4 (196) Atlas-
attemptnr (25)	1 (11656) 2 (741) 3 (568) 4 (211) 5 (62) 6 (51) 7 (50) 8 (178) 9 (34) 10 (66) 11 (62) 12 (150) 13 (114) 14 (75) 15 (31) 16 (53) 17 (33) 18 (16) 19 (4) 20 (6) 21 (5) 22 (2) 23 (4) 24 (2) 27 (8)	Test
cloud (12)	CA (2011) CERN (83) DE (859) ES (592) FR (4720) IT (1635) ND (354) NL (2741) RU (18) TW (250) UK (1942) US (1260)	
workinggroup (24)	(265) AP_REPR (191) AP_SM (2349) AP_STDM (10) AP_Susy (7) AP_TAUP (5) AP_VALI (10) AP_Validation (815) GP_EXOT (40) GP_FTAG (14) GP_HIGG (3) GP_PHYS (151) GP_STDM (421) GP_SUSY (2) GP_TOPQ (220)	

job attribute summary

Job list Only the most recent 3000 jobs (sorted by PandalD) are shown. Remove the limit and sort by PandalD, ascending mod time, descending mod time, priority, attemptnr

PanDA ID Attempt#	Owner Group	Task ID	Transformation	Status	Created	Time to start d:h:m:s	Duration d:h:m:s	Mod	Cloud Site	Priority	Job info
2320823545 Attempt 1	sascha.mehihase@cern.ch AP_Btagging	1614778	AtlasG4_trf.py	pending	2014-11-25 16:39	0:0:00:09		11-25 16:39	NL	140	
Job name: mc12_8TeV.129407.Pythia8EvtGen_AU2CT10_jetlet_JZ7W.simul.e3304_s1469_tid01614778_010027.job #1											
Datasets: In: mc12_8TeV.129407.Pythia8EvtGen_AU2CT10_jetlet_JZ7W.evgen.EVNT.e3304_tid01614002_00 Out: mc12_8TeV.129407.Pythia8EvtGen_AU2CT10_jetlet_JZ7W.simul.HITS.e3304_s1469_tid01614778_01											
2320823544 Attempt 1	sascha.mehihase@cern.ch AP_Btagging	1614778	AtlasG4_trf.py	pending	2014-11-25 16:39	0:0:00:09		11-25 16:39	NL	140	
Job name: mc12_8TeV.129407.Pythia8EvtGen_AU2CT10_jetlet_JZ7W.simul.e3304_s1469_tid01614778_010026.job #1											
Datasets: In: mc12_8TeV.129407.Pythia8EvtGen_AU2CT10_jetlet_JZ7W.evgen.EVNT.e3304_tid01614002_00 Out: mc12_8TeV.129407.Pythia8EvtGen_AU2CT10_jetlet_JZ7W.simul.HITS.e3304_s1469_tid01614778_01											

job listing

# Errors

this page shows

- plots of error distribution in time
- attribute summary of failing jobs
- error summary sorted by
  - error code
  - site
  - user
  - task ID and name

# Errors

## Errors → Production

ATLAS PanDA monitor   Dashboards ▾   Tasks ▾   Jobs ▾   Errors ▾   Users ▾   Sites ▾   Incidents ▾   Search   Prodsys ▾   Services ▾   VO ▾   Help ▾

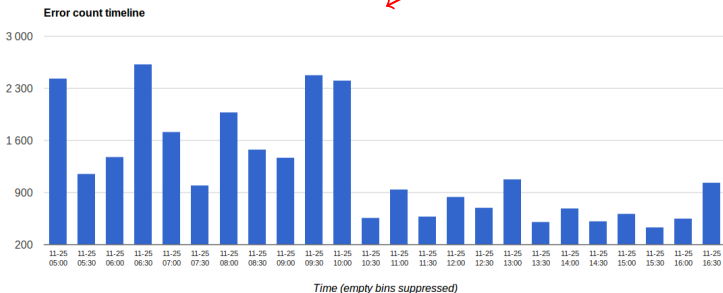
PanDA job error summary, last 12 hours (limit 6000 per table).   Params: limit=   All   Generated 2014-11-25 16:59 UTC

29127 jobs found. Show jobs: [Failed and holding only](#)   All  
Sort by [count](#), [alpha](#)

Job modification times in this listing range from 2014-11-25 16:55

Go to [overall](#), [site](#), [user](#), [task](#) summary

All  
Analysis  
Production 16:55  
rc\_test



# Errors

<https://twiki.cern.ch/twiki/bin/viewauth/AtlasComputing/PandaErrorCodes>

## attribute summary of failing jobs

### Error occurrences by job attribute

cloud (12)	CA (382) CERN (476) DE (1507) ES (392) FR (11434) IT (2400) ND (865) NL (1450) RO (108) TW (356) UK (2688) US (7069)
workinggroup (26)	AGIS_T2 (55) AGIS_T2_SIF (405) AMM_VERBUI (4) ANALY_CERN_SICR (3) ANALY_CPDM (3) ANALY_CSFS (11) ANALY_CVE (11) ANALY_EREBIBRG (20) ANALY_F711 (4) AP_BHphysics (2) AP_btagging (1086) AP_eGamma (4153) AP_EXU1 (1011) AP_Exotics (1051) AP_Generators (147) AP_HIGGS (2538) AP_Heavyion (31) AP_Higgs (232) AP_JetEMiss (148) AP_Physics (98) AP_REPR (115) AP_SM (8747) AP_STDM (4) AP_SUSY (166) AP_Susy (33) AP_TAUP (13) AP_VALI (6) AP_Validation (6886) GP_EXOT (6) GP_FTAG (57) GP_HIGG (5) GP_PHYS (148) GP_STDM (348) GP_SUSY (3) GP_TOPO (260)

### Overall error summary

## error summary sorted by error code

Category:code	Errors	Sample error description
ddm:101	10566	GUID for HITS.01498150_000066.pool.root.1 not found in DQ2
ddm:200	30	Could not add files to DDM: dq2.repository.DQRepositoryException.DQDatasetExistsException : [USER][OTHER] The dataset mct14_valid.158740.Pythia8_AUCTEQ6L1_DYtautau_2000M2250.simul.log.e2658_s1967_tid01600974_00_sub0191659342 already exists!
exe:-1	49	LRMS error: (271) SGE job state was Eqw. LRMS error message was: 11/25/2014 06:56:36 [10102:25834]: error: can't chdir to /home/atlasprod002: No such file or directory
exe:10010	72	ATH_COREDUMP   "Core dump from CoreDumpSvc on acas1304.usatlas.bnl.gov at Tue Nov 25 11:52:33 2014"   "Caught signal 11(Segmentation fault). Details:"   """" Break """" segmentation violation"
exe:24	23	LRMS error: (24) Job exceeded time limit.
exe:61200	281	TRF_SVRINIT   "Unable to read requested LHE file: events.lhe !!"   "Pythia 8 initialisation will FAIL!"   """" Unable to initialise Pythia !! """"   "Could not initialize generator properly"   "Unable to initialize Algorithm Pythia8"   "Unable to ini
exe:69999	231	TRF_UNKNOWN   "out of memory: saving summary ..."   "Standard std::exception is caught"   "std::bad_alloc"   "Standard std::exception is caught"   "std::bad_alloc"   "Standard std::exception is caught"   "std::bad_alloc"

# Errors

<https://twiki.cern.ch/twiki/bin/viewauth/AtlasComputing/PandaErrorCodes>

transformation:6	3	TRF_SEGVIO - Segmentation violation
transformation:65	3	Non-zero exit code from transform substep executor
transformation:67	3	Transform substep executor timed out
transformation:74	5	Input file failed validation
transformation:9	14	Error found with transform input file
transformation:99	267	TRF_UNKNOWN - unknown transformation error

error summary sorted by error code

Site error summary		
	10171	<b>Total errors in 10171 jobs. Finished: 0 Failed: 10171 % failed: 100 Holding: 0 Cancelled: 20</b>
	10171	<b>ddm:101</b> GUID for HITS.01230600_001647.pool.root not found in DQ2
AGLT2_MCORE	25	<b>Total errors in 52 jobs. Finished: 90 Failed: 55 % failed: 37 Holding: 0 Cancelled: 0</b>
	25	<b>pilot:1201</b> Job killed by signal 15: Signal handler has set job result to FAILED, ec = 1201
AGLT2_SL6	408	<b>Total errors in 495 jobs. Finished: 287 Failed: 470 % failed: 62 Holding: 25 Cancelled: 2</b>
	274	<b>jobdispatcher:100</b> lost heartbeat : 2014-11-24 22:56:07
	1	<b>pilot:1187</b> Exception caught in runJob: Expecting object: line 135 column 26 (char 5184), Traceback (most recent call last): File "RunJob.py", line 1285, in <module> res, job, getstatusoutput_was_interrupted, current_job_number = runJob.executePayload(this
	131	<b>pilot:1201</b> Job killed by signal 15: Signal handler has set job result to FAILED, ec = 1201
	2	<b>transformation:1</b> Unspecified error, consult log file
AM-04-YERPHI	4	<b>Total errors in 4 jobs. Finished: 30 Failed: 4 % failed: 11 Holding: 0 Cancelled: 2</b>
	4	<b>jobdispatcher:100</b> lost heartbeat : 2014-11-25 08:02:34
ANALY_CERN_SLC6	3	<b>Total errors in 3 jobs. Finished: Failed: % failed: Holding: Cancelled:</b>

# Errors

	2	<b>pilot:1137</b> (failed to remove file) Using grid catalog type: UNKNOWN Using grid catalog : (null) VO name: atlas Checksum type: None Destination SE type: SRMv2 Destination SRM Request Token: -1718484628 Source URL: file:/tmp/4169160.1.atlas-himem.q/condorg_N3wZsH
	13	<b>pilot:1168</b> Get error: Too many/too large input files. Total file size 15390949229 B > 15032385536 B
	6	<b>pilot:1187</b> Exception caught in runJob: Expecting object: line 135 column 26 (char 5119), Traceback (most recent call last): File "RunJob.py", line 1285, in <module> res, job, getstatusoutput_was_interrupted, current_job_number = runJob.executePayload(this)
	6	<b>pilot:1212</b> TRF_UNKNOWN   "out of memory: saving summary ..."   "Standard std::exception is caught"   "std::bad_alloc"   "Standard std::exception is caught"   "std::bad_alloc"   "Standard std::exception is caught"   "std::bad_alloc"
wuppertalprod_MCORE	29	<b>Total errors in 61 jobs. Finished: 81 Failed: 61 % failed: 42 Holding: 0 Cancelled: 0</b>
	20	<b>ddm:101</b> GUID for HITS.01498150_000066.pool.root.1 not found in DQ2
	9	<b>pilot:1099</b> Get error: Staging input file failed

error summary sorted by site/queue

User error summary		
Carl.Bryan.Gwilliam@cem.ch	1041	<b>Total errors</b>
	1	<b>exe:-1</b> Failed in data staging: Failed writing to destination: file:/users/hep/grid/session/EmkMDmvVGDIn13Rnamo7vSEmABFKDmABFKDmalNKDmABFKDmthYEcm/pilotcode.tar.gz : Can't write to destination: Permission denied: Failed to create file /users/hep/grid/session/EmkMDmvVGDIn13Rnamo7vSEmABFKDmABFKDmalNKDmABFKDmthYEcm/pilotcode.tar.gz: Failed in data staging: Failed writing to destination: file:/users/hep/grid/session/EmkMDmvVGDIn13Rnamo7vSEmABFKDmABFKDmalNKDmABFKDmthYEcm/ARCPilot-test.tar.gz : Can't write to
	799	<b>jobdispatcher:100</b> lost heartbeat : 2014-11-24 22:56:07
	1	<b>jobdispatcher:102</b> Sent job didnt receive reply from pilot within 30 min
	1	<b>pilot:1008</b> Failed in data staging: Failed writing to destination: file:/users/hep/grid/session/EmkMDmvVGDIn13Rnamo7vSEmABFKDmABFKDmalNKDmABFKDmthYEcm/pilotcode.tar.gz : Can't write to destination: Permission denied: Failed to create file /users/hep/grid/session/EmkMDmvVGDIn13Rnamo7vSEmABFKDmABFKDmalNKDmABFKDmthYEcm/pilotcode.tar.gz: Failed in data staging: Failed writing to destination: file:/users/hep/grid/session/EmkMDmvVGDIn13Rnamo7vSEmABFKDmABFKDmalNKDmABFKDmthYEcm/ARCPilot-test.tar.gz : Can't write to
	8	<b>pilot:1099</b> Get error: Staging input file failed

error summary sorted by user

# Errors

		"Standard std::exception is caught"   "std::bad_alloc"
	53	pilot:1213 Reached maximum batch system time limit
	148	transformation:10 ATH_FAILURE - Athena non-zero exit
	5	transformation:99 TRF_UNKNOWN - unknown transformation error
ttashiro	5	Total errors
	1	jobdispatcher:100 lost heartbeat : 2014-11-25 00:20:03
	4	pilot:1201 Job killed by signal 15: Signal handler has set job result to FAILED, ec = 1201
vanyash	1	Total errors
	1	transformation:251

error summary sorted by user

Task error summary		
taskid 1513850 mc12_valid.119996.Pythia8_A2MSTW2008LO_minbias_inelastic_high.simul.e1119_s1773.task		
16	Total errors in 16 jobs. Finished: 0 Failed: 51 % failed: 100 Holding: 0 Cancelled: 50	
16	jobdispatcher:100 lost heartbeat : 2014-11-25 02:30:27	
taskid 1598008 mc14_13TeV.200922.Sherpa_CT10_llvv.merge.e3213_s1982_s2008_r5787_r5853.task		
2	Total errors in 2 jobs. Finished: 15 Failed: 5 % failed: 25 Holding: 0 Cancelled: 0	
2	jobdispatcher:100 lost heartbeat : 2014-11-25 00:35:28	
taskid 1598016 mc14_13TeV.129285.Pythia8EvtGen_AU2CT10_jetjet_JZ5W_muifilter.merge.e2743_s1982_s2008_r5787_r5853.task		
4	Total errors in 3 jobs. Finished: 0 Failed: 9 % failed: 100 Holding: 0 Cancelled: 0	
2	jobdispatcher:100 lost heartbeat : 2014-11-24 22:33:02	

error summary sorted by task

# Errors

## How to check failing job

PanDA job error summary `jeditaskid=4454744` `jobtype=production`

Built 2014-11-26 12:34 UTC

45 jobs found. Show jobs: [Failed and holding only](#) [All](#)

link to the list of files

Sort by `count`, `alpha`

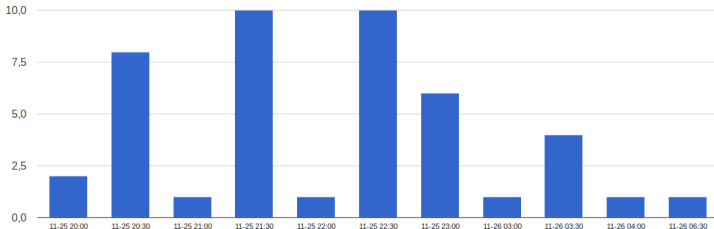
Job type: `production`

JEDI Task: `4454744` `mc12_8TeV.169715.PowhegPythia8_AU2CT10_tbH800_tb.evgen.e1532`

Job modification times in this listing range from 2014-11-26 12:34 to 2014-08-18 12:34

Go to [overall](#), [site](#), [user](#), [task](#) summary

Error count timeline





# Errors

## How to check failing jobs

ATLAS PanDA monitor   Dashboards ▾   Tasks ▾   Jobs ▾   Errors ▾   Users ▾   Sites ▾   Incidents ▾   Search   Prodsys ▾   Services ▾   VO ▾   Help ▾

PanDA jobs   **jobstatus=failed/holding**   hours=4320   llimit=999999   jedidtaskid=4454744   jobtype=production   Built 2014-11-26 12:34 UTC

6 jobs in this selection  
Job type: production  
Job status: failed/holding  
Task: 4454744   mc12\_8TeV.169715.PowhegPythia8\_AU2CT10\_tbH800\_tb.evgen.e1532

Job modification times in this listing range from 2014-11-25 22:47 to 2014-11-26 06:32.

Job current priorities in this listing range from 900 to 900. See priorityrange in the job attribute summary to see how priorities are distributed.

39 jobs were dropped from this listing because they were retried. Where there were retries, the latest retry job (only) is listed.

Dropped (retry):

2321064709 (2321208567)   2321064708 (2321202802)   2321064707 (2321198206)   2321064706 (2321198207)   2321064705 (2321194755)  
2321060264 (2321068384)   2321060262 (2321069383)   2321060261 (2321069382)   2321029447 (2321064708)   2321029446 (2321064707)  
2321029445 (2321064706)   2321029444 (2321060264)   2321029443 (2321060262)   2321029442 (2321060261)   2321029441 (2321048537)  
2321022921 (2321064709)   2321022920 (2321064705)   2321017608 (2321053875)   2321008920 (2321017608)   2320983477 (2321022921)  
2320983476 (2321029447)   2320983475 (2321029446)   2320983474 (2321029445)   2320983473 (2321029444)   2320983472 (2321029443)  
2320983471 (2321029442)   2320983470 (2321029441)   2320983469 (2321022920)   2320976064 (2321008920)   2320963649 (2320983477)  
2320963648 (2320983476)   2320963647 (2320983475)   2320963646 (2320983474)   2320963645 (2320983473)   2320963644 (2320983472)  
2320963643 (2320983471)   2320963642 (2320983470)   2320963641 (2320983469)   2320963640 (2320976064)

jobs retries

Job attribute summary   Sort by count, alpha

workinggroup (1)   AP\_HIGG (6)

job attribute summary

Job list   Sort by PandaID, ascending mod time, descending mod time, priority, attemptnr

PanDA ID Attempt#	Owner Group	Task ID	Transformation	Status	Created	Time to start d:h:m:s	Duration d:h:m:s	Mod	Cloud Site	Priority	Job info
2321208567 Attempt 1	jzhong AP_HIGG	4454744	Generate_trf.py	failed	2014-11-26 04:00	0:2:14:31	0:0:01:46	11-26 06:32	FR UKI-NORTHGRID-LIV-HEP_SL6	900	Executable error 10510: ATH_JOP_NOTFOUND   *IncludeError: include file...

Job name: mc12\_8TeV.169715.PowhegPythia8\_AU2CT10\_tbH800\_tb.evgen.e1532 #1

Datasets: In: group.phys-gener.powheg.169696.tHpl\_2HDM\_M800\_8TeV.TXT.mc12\_v1/  
Out: mc12\_8TeV.169715.PowhegPythia8\_AU2CT10\_tbH800\_tb.evgen.EVNT.e1532\_tid04454744\_00

job details

jzhong AP_HIGG	4454744	Generate_trf.py	failed	2014-11-26 03:50	0:0:07:19	0:0:03:35	11-26 04:10	FR UKI-NORTHGRID-LANCS-HEP_VAC	900	Trf exit code 5. trans: Argument out of allowed range
----------------	---------	-----------------	--------	------------------	-----------	-----------	-------------	--------------------------------	-----	---

# Errors

## How to check failing jobs

PandalID	Owner WG	TaskID	Status	Created	Time to start d:h:m:s	Duration d:h:m:s	Modified	Cloud Site	Priority
2321208567	jzhong / AP_HIGG	4454744	failed	2014-11-26 04:00	0:2:14:31	0:0:01:46	11-26 06:32	FR UKI-NORTHGRID-LIV-HEP_SL6	900

Job name: mc12\_8TeV.169715.PowhegPythia8\_AU2CT10\_tbH800\_tb.evgen.e1532 type: evgen transformation: Generate\_trf.py

Datasets: In: group.phys-gener.powheg.169696.tHpl\_2HDM\_M800\_8TeV.TXT.mc12\_v1/  
Out: mc12\_8TeV.169715.PowhegPythia8\_AU2CT10\_tbH800\_tb.evgen.EVNT.e1532\_tid04454744\_00

<b>Error description</b>	exe: ATH_JOP_NOTFOUND   "IncludeError: include file MC12.JobOptions/MC12.169715.PowhegPythia8_AU2CT10_tbH800_tb.py can not be found" trans: Unknown transexitcode error code
<b>Execution error code</b>	10510
<b>Execution error message</b>	ATH_JOP_NOTFOUND   "IncludeError: include file MC12.JobOptions/MC12.169715.PowhegPythia8_AU2CT10_tbH800_tb.py can not be found"

This job is a descendent of upstream job(s), with relationship shown

2321064709:retry

<b>Job information</b>	<a href="#">logfiles</a>	<a href="#">pilot job</a>	<a href="#">stdout, stderr, batch log</a>	<a href="#">logger records</a>	<a href="#">child jobs</a>
<b>Jobset 1186</b>					

8 job files					
Filename (Type)	Scope	Size (MB)	Status	Attempt (max)	Dataset
group.phys-gener.powheg.169696.tHpl_2HDM_M800_8TeV.TXT.mc12_v1_00010.tar.gz (input) Find creator job	group.phys-gener	1	ready	5 (5)	group.phys-gener.powheg.169696.tHpl_2HDM_M800_8TeV.TXT.mc12_v1/

links to the logfiles

link to input file details

link to input dataset details

## How to check failing jobs - input dataset details

**Dataset** `group.phys-gener.powhcg.169696.tHpl_2HDM_M800_8TeV.TXT.mc12_v1/`

ID	Type	Scope	Stream	Task	State	Status	Nfiles	Created	Modified
10809879	input		IN_GENERATOR	4448330	open	failed	80	2014-11-24 23:34	11-25 18:01

[Show files in dataset](#)**Dataset attributes**

attributes	of=0
cloud	
containername	group.phys-gener.powhcg.169696.tHpl_2HDM_M800_8TeV.TXT.mc12_v1/
creationtime	Nov. 24, 2014, 11:34 p.m.
datasetid	10809879
datasetname	group.phys-gener.powhcg.169696.tHpl_2HDM_M800_8TeV.TXT.mc12_v1/
destination	
jeditaskid	4448330
lockedby	
modificationtime	Nov. 25, 2014, 6:01 p.m.
nevents	0
neventstobeused	0

## How to check failing jobs - input file details

 Occurrence of the file in job [2321208567](#)

 File [group.phys-gener.powheg.169696.tHpl\\_2HDM\\_M800\\_8TeV.TXT.mc12\\_v1\\_00010.tar.gz](#)

Scope	# events	Size (MB)	Created	GUID	ID
group.phys-gener	5000	1.80	2014-11-25 19:56	24790e51-6e9e-4388-9b12-29e7a14b5ad1	576188202

Occurrences of the file in processing (most recent jobs listed first)

Dataset	Task	Type	Job	First event	End event	Status	Attempt (max)
<a href="#">group.phys-gener.powheg.169696.tHpl_2HDM_M800_8TeV.TXT.mc12_v1/</a>	<a href="#">4454744</a>	input	<a href="#">2321208567</a>	45001	4999	ready	5 (5)

File attributes (sample occurrence)

attemptnr	5
checksum	ad:c2a5a162
creationdate	Nov. 25, 2014, 7:56 p.m.
datasetid	10936771
datasetname	group.phys-gener.powheg.169696.tHpl_2HDM_M800_8TeV.TXT.mc12_v1/
ondevent	4999
fileid	576188202

# Errors

## How to check failing jobs - logs

- important log files - pilotlog.txt, athena\_stdout.txt, and \*.log

ATLAS PanDA monitor   Dashboards ▾   Tasks ▾   Jobs ▾   Errors ▾   Users ▾   Sites ▾   Incidents ▾   Search   Prodsys ▾   Services ▾   VO ▾   Help ▾

PanDA filebrowser   site=IN2P3-CC   scope=mc12\_8TeV   lfn=log.04454744\_000049.job.log.tgz.1   Built 2014-11-26 12:34 UTC

### File lookup parameters

Scope	mc12_8TeV
LFN	<a href="#">log.04454744_000049.job.log.tgz.1</a>
Site	IN2P3-CC
GUID	f7ab89e8-13b5-4041-9ed0-d1d22cee4504

### File listing

Modification time	Size [B]	File
Wed Nov 26 06:15:53 2014	0	<a href="#">athena_stderr.txt</a>
Wed Nov 26 06:16:06 2014	69736	<a href="#">athena_stdout.txt</a>
Wed Nov 26 06:16:06 2014	18935	<a href="#">Generate.log</a>
Wed Nov 26 06:16:01 2014	349	<a href="#">Generate_runathena</a>
Wed Nov 26 06:16:00 2014	470	<a href="#">inputDictionary.pickle</a>
Wed Nov 26 06:15:46 2014	1607	<a href="#">job_setup.sh</a>
Wed Nov 26 06:16:06 2014	98749	<a href="#">jobInfo.xml</a>
Wed Nov 26 06:16:06 2014	98749	<a href="#">jobInfo_Generate.xml</a>
Wed Nov 26 06:16:06 2014	35890	<a href="#">jobReport.gpickle</a>
Wed Nov 26 06:16:06 2014	98449	<a href="#">jobReport.pickle</a>

link to athena\_stdout.txt

# Errors

## How to check failing jobs - log

```
Py:ConfigurableDb INFO No duplicates have been found: that's good !
Shortened traceback (most recent user call last):
  File ~/cvafs/atlas.cern.ch/repo/sw/software/i686-slc5-gcc43-opt/17.2.5/AtlasProduction/17.2.5.2/InstallArea/jobOptions/EvgenJobTransforms/skeleton.GENtoEVGEN.py, line 89, in <module>
    include(fragment)
IncludeError: include file MC12JobOptions/MC12_169715.PowhegPythia8_AU2CT10_tBH800_tb.py can not be found
Py:Athena INFO leaving with code 2: "an error occurred when including a file"
INFO: read 119 error categories from file /cvafs/atlas.cern.ch/repo/sw/software/i686-slc5-gcc43-opt/17.2.5/AtlasCore/17.2.5/InstallArea/share/atlas_error_categories.db
/cvafs/atlas.cern.ch/repo/sw/software/i686-slc5-gcc43-opt/17.2.5/AtlasCore/17.2.5/InstallArea/share/bin/athena.py -b runargs.Generate.py EvgenJobTransforms/skeleton.GENtoEVGEN.py Generate_messageSvc_job
Py:Generate INFO Generate has completed running of Athena with exit code 2.
INFO: read 119 error categories from file /cvafs/atlas.cern.ch/repo/sw/software/i686-slc5-gcc43-opt/17.2.5/AtlasCore/17.2.5/InstallArea/share/atlas_error_categories.db
INFO: read 59 error patterns from file /cvafs/atlas.cern.ch/repo/sw/software/i686-slc5-gcc43-opt/17.2.5/AtlasCore/17.2.5/InstallArea/share/atlas_error_patterns.db
INFO: read 61 ignore patterns from file /cvafs/atlas.cern.ch/repo/sw/software/i686-slc5-gcc43-opt/17.2.5/AtlasCore/17.2.5/InstallArea/share/atlas_error_ignore.db
AthenaLogChecker start [Generate log] wall-time: Wed Nov 26 06:16:06 2014 GMT, vmem: 110.17578125 Mb, rss: 55.33203125 Mb
Py:Generate INFO Scanning athena logfile Generate.log assuming ATLAS release ALL.17.2.5.2 ...
Py:Generate INFO Athena initialise()...
Py:Generate INFO Done scanning 443 lines of file Generate.log. Summary:
Py:Generate INFO Ignored : 0
Py:Generate INFO Warnings : 0
Py:Generate INFO Errors : 0
Py:Generate INFO FATALs : 1
AthenaLogChecker stop [Generate log] wall-time: Wed Nov 26 06:16:06 2014 GMT, vmem: 110.17578125 Mb, rss: 55.359375 Mb
AthenaLogChecker report [Generate log] wall-time: 00 hrs 00 mins 00 secs, cpu-time: 00 hrs 00 mins 00 secs, vmem: 0.0 Mb, rss: 0.02734375 Mb
Py:Generate INFO JobTransform completed for Generate with error code 10510 (exit code 5)
Py:Generate INFO Transform Timer stop [Generate] wall-time: Wed Nov 26 06:16:06 2014 GMT, vmem: 110.17578125 Mb, rss: 55.4453125 Mb
Py:Generate INFO Transform Timer report [Generate] wall-time: 00 hrs 00 mins 06 secs, cpu-time: 00 hrs 00 mins 04 secs, vmem: 0.4921875 Mb, rss: -19.59765625 Mb
----- Job Report produced by Generate version unknown -----
Command~/cvafs/atlas.cern.ch/repo/sw/software/i686-slc5-gcc43-opt/17.2.5/AtlasProduction/17.2.5.2/InstallArea/share/bin/Generate_trf.py inputGeneratorFile=group.phys-gener.powheg.169696.tbl_ZHDM_M800_1
ExitCode=5
ErrorCode=10510 (ATH_JOP_NOTFOUND)
ErrorCategory=ATH_JOP_NOTFOUND, 10510, JobOptions file not found
Fatal=1
Errors=0
Warnings=0
ErrorInfo
  acronym=ATH_JOP_NOTFOUND (10510) JobOptions file not found
message=IncludeError: include file MC12JobOptions/MC12_169715.PowhegPythia8_AU2CT10_tBH800_tb.py can not be found
severity=FATAL
  producer=Generate
  stage=initialise
WorkDir=/data/condor_pool/dir_4388/condorg_6ePRFMTA/pilot3/Panda_Pilot_6073_1416982491/PandaJob_2321208567_1416982493
athCode=2
RunDir=AvailableDisk=256737628160
DBRelease=current
athAcronym=an error occurred when including a file
RunDirUsedDisk=18665791
AtlasRelease=17.2.5.2
Writing jobInfo_Generate.xml file...
```

keywords: error, failed, core dump, segmentation, ...

## Users → Usage stats view

- number of jobs, CPU usage

ATLAS PanDA monitor   Dashboards ▾   Tasks ▾   Jobs ▾   Errors ▾   **Users ▾**   Sites ▾   Incidents ▾   Search   Prodsys ▾   Services ▾   VO ▾   Help ▾

Recent PanDA users, last 90 days, limit 6000 per table.   Params: limit=6000   view=datatable   **Usage stats view**   Built 2014-11-26 14:13 UTC

Usage stats

Dynamic view

Job count for the last 7 days: 2214416   Users in last 3 days: 9   7: 20   30: 47   90: 787   Users with >1000 jobs: 171   >10k: 40

Recent users						
User	nJobs	Latest	Personal CPU-hrs 1 day	Personal CPU-hrs 7 days	Group CPU-hrs 1 day	Group CPU-hrs 7 days
Benjamin Henry Hooberman		2014-11-25 21:06				
David Kirchmeier		2014-11-25 12:48	0.0	0.0		
KOZAKAI Chihiro		2014-11-25 10:45	0.0	0.0		
Robert Graham Reed		2014-11-24 15:46				
Denys Denysiuk		2014-11-24 14:43	26.3	28.5		
Arnaud Dubreuil		2014-11-24 10:17				
Olga Rezanova		2014-11-24 09:54	2.1	164.1		
harry moss		2014-11-24 09:49	0.0	0.0		
Lydia Audrey Beresford		2014-11-24 09:46		0.0		
Claudia Ciocca		2014-11-21 16:37		0.4		
mark pickering		2014-11-21 14:13		0.0		
Natalia Zakharchuk		2014-11-21 13:46		7.8		

## Users → Dynamic view

- jobs stats

ATLAS PanDA monitor Dashboards ▾ Tasks ▾ Jobs ▾ Errors ▾ Users ▾ Sites ▾ Incidents ▾ Search Prodsys ▾ Services ▾ VO ▾ Help ▾

Recent PanDA users, last 12 hours, limit 5000 per table. **Params:** limit=5000 view=dynami Usage stats view Dynamic view Built 2014-11-26 14:13 UTC

Job **modification times** in this listing range from **2014-11-26 13:26** to **2014-11-26 14:13**.  
 Job **current priorities** in this listing range from **-8592** to **10000**. See priorityrange summary to see how priorities are distributed.

### Recent job attribute summary

(0)	
(0)	

### 161 recent users, ordered by most recent jobs

User	Latest PandaID	Latest mod time	nJobs	nFinished	nFailed	nHolding	nCancelled	nQueued	nSites	nClouds	CPU
Christian Ohm	2321429984	2014-11-26 14:13	8	3	0	0	0	5	3	4	2396
Phillipp Tepel	2321429983	2014-11-26 14:13	332	5	67	31	0	183	27	12	770
Duc Bao Ta	2321429982	2014-11-26 14:13	652	219	8	12	53	291	23	10	309722
Haonan Lu	2321429981	2014-11-26 14:13	121	51	0	7	0	41	21	8	23650
Peter Steinberg	2321429979	2014-11-26 14:13	277	0	0	3	0	257	6	4	271
Archil Durglishvili	2321429977	2014-11-26 14:13	110	25	6	8	0	5	12	5	129873
gangarbt	2321429974	2014-11-26 14:13	520	284	26	41	0	29	184	12	228046
Elizabeth Brost	2321429973	2014-11-26 14:13	10	1	2	4	0	1	3	3	89660
nicolas gutierrez	2321429972	2014-11-26 14:13	51	33	1	0	7	8	9	7	50615



## User details

- attributes, tasks, jobsets, jobs details

User page for [Michal Svatos](#) Please read (and keep an eye on) the [help section below](#) to familiarize yourself with using the monitor in JEDI based analysis.

Stats from the user DB (updated every few hours)						
User	Jobs in last week	Latest job in the DB stats	Personal CPU-hrs - 1 day	Personal CPU-hrs - 7 days	Group CPU-hrs - 1 day	Group CPU-hrs - 7 days
Michal Svatos	21	2014-09-25 00:54	0.0	423.6	0.0	0.0

Jump to recent [tasks](#) [jobsets](#) [jobs](#)

Task attribute summary, 11 tasks	
corecount (1)	1 (11)
processingtype (2)	ganga-6-0-40-hotfix1-jedi-run (7) panda-client-0.5.38-jedi-run (4)
status (3)	aborted (5) done (5) finished (1)
taskpriority (1)	1000 (11)
tasktype (1)	analy (11)
transpath (1)	runGen-00-00-02 (11)
username (1)	Michal Svatos (11)

11 tasks, sorted by jedidtaskid												
ID	Parent	Jobset	Task name	TaskType/ProcessingType	Campaign	Group	User	Task status	Input files	Modified	State changed	Priority
			Logged status									
			Nfiles	finish%	fail%	Nfinish	Nfail					
4459263		32462	user.msvatos.data12.NTUP_COMMON.pj.ruclotest4/anal/panda-client-0.5.38-jedi-run	Michal Svatos				done 39	100% 39	2014-11-26 10:13	11-26 10:13	1000

## Sites→Clouds, sites

ATLAS PanDA monitor Dashboards Tasks Jobs Errors Users Sites Incidents Search Prodsys Services VO Help

PanDA sites Build 2014-11-26 14:45 UTC

**Jump to site attribute summary, site list**

Clouds				TLO, THI are transfer timeouts for low and high priority jobs
Cloud	Tier 1	Status	Comment	
cloud info				
CA	TRIUMF	online	LFC:migration 2014-10-23 09:35 Cedric	
	<p>MCP sites (home cloud sites in bold): AGLT2_SL6 ANALY_AUSTRALIA ANALY_MCGILL ANALY_BNL_ATLAS_2 BNL_PROD BNL_PROD_MOORE BU_ATLAS_Tier2_MOORE BU_ATLAS_Tier2_SL6 CA-MCGILL-T2_MOORE CERN-P1_MOORE CERN-PROD_CLOUD_MOORE CPPM_MOORE CSCS-TODI DESY-HH_MOORE FZK-INP3-CC_MOORE INFN-FRASCATI_MOORE INFN-MILANO-ATLAS_MOORE INFN-NAPOLI-ATLAS_MOORE INFN-LRZ-LMUC_MOORE MWT2_MOORE MWT2_SL6 NIKHEF-ELPROD_MOORE OU_OSCER_ATLAS_MOORE RAL-SWT2_CP8_MOORE SIGNET_MOORE TOKYO_HIMEM TOKYO_MOORE TRIUMF TRIUMF_HIMEM TRIUMF_MOORE UKI-NORTHGRID-MAN-HEP_MOORE UKI-NORTHGRID-SHEF-HEP_MOORE UKI-SCOTGRID-GLASGOW_MOORE UN</p>			
CERN	CERN-PROD	online	ADCR. 11g upgrade.finished.eiog.33058 2014-10-23 09:35	
	<p>MCP sites (home cloud sites in bold): ANALY_CERN_CLOUD ANALY_CERN_SHORT ANALY_CERN_SL6 ARNES CA-VICTORIA-WESTGRID-T2_MOORE CERN-BUILDS CERN-P1 CERN-P1_MOORE CERN-P1_MOORE_HI CERN-CSCS-TODI FZK-LCG2_HI FZK-LCG2_MOORE HELIX_NEBULA_EGI HU_ATLAS_Tier2_MOORE IAAS_MOORE INFN-ATLAS_MOORE INFN-NAPOLI-RECAS_MOORE INFN-ROMA1_MOORE INFN-ROMA3_MOORE INFN-T1_MOORE LARA-SARA-MATRIX_MOORE SLACKRD SLACKRD_LMEM SLACKRD_MP8 SIGNET_MOORE TOKYO_HIMEM TOKYO_MOORE UKI-NORTHGRID-LANCS-HEP_MOORE UKI-NORTHGRID-LANCS-HEP_SL6 UKI-NORTHGRID-LIV-HEP_MOORE UKI-NORTHGRID-MAN-HEP_MOORE UKI-NORTHGRID-MAN-HEP_SL6 UKI-NORTHGRID-SHEF-HEP_MOORE UKI-NORTHGRID-SHEF-HEP_SL6 UKI-SCOTGRID-GLASGOW_MOORE UKI-SCOTGRID-MAN-HEP_SL6 UKI-SCOTGRID-VID-HEP_SL6 UNL-ELBEPROD_MOORE OU_HIMEM OU_MOORE wuppertalprod_H</p>			

Cloud	Tier 1	Status	Comment	Free space TB	Space updated
CA	TRIUMF	online	LFC:migration 2014-10-23 09:35 Cedric	372	11-26 09:54
CERN	CERN-PROD	online	ADCR. 11g upgrade.finished.eiog.33058 2014-10-23 09:35	223	11-26 09:54

Work queues

# Sites

GLASGOW_SL6 UKI-SOUTHGRID-BHAM-HEP_SL6 UKI-SOUTHGRID-CAM-HEP_MCORE UKI-SOUTHGRID-CAM-HEP_SL6 UKI-SOUTHGRID-OX-HEP_MCORE UKI-SOUTHGRID-OX-HEP_SL6 UKI-SOUTHGRID-OX-HEP_YAC UKI-SOUTHGRID-RALPP_MCORE UKI-SOUTHGRID-RALPP_SL6 UKI-SOUTHGRID-SUSX_MCORE UKI-SOUTHGRID-SUSX_SL6 UNI-FREIBURG UNI-FREIBURG_MCORE pic_HIMEM pic_MCORE praguekg2 wuppertalprod wuppertalprod_HI wuppertalprod_MCORE									
BNL_PROD	online	end.BNLnetwork.downtime.16.Dec 2014-10-23 09:35	<b>cloud info</b>	8/4	BNL-OSG2_DATADISK.BNL-OSG2_DATATAPE.BNL-OSG2_MCTAPE.BNL-OSG2_HOTDISK.BNL-OSG2_DET-*.BNL-OSG2_PERF-*.BNL-OSG2_PHYS-*.BNL-OSG2_TRIG-*	135	11-26 09:54		
US	<p>MCP sites (home cloud sites in bold): AGLT2_MCORE AGLT2_SL6 ANALY_AGLT2_SL6 ANALY_BNL_CLOUD ANALY_BNL_LONG ANALY_BNL_MCORE ANALY_BNL_SHORT ANALY_BU_ATLAS_Tier2_SL6 ANALY_CONNECT ANALY_CONNECT_SHORT ANALY_HU_ATLAS_Tier2 ANALY_MWT2_SL6 ANALY_OU_OCHEP_SWT2 ANALY_SLAC ANALY_SWT2_CPB ANALY_UCSC ARNES Australia-ATLAS Australia-ATLAS_MCORE BNL_ATLAS_2 BNL_ATLAS_DOM BNL_CLOUD BNL_CLOUD_MCORE BNL_PROD BNL_PROD_MCORE BU_ATLAS_Tier2_MCORE BU_ATLAS_Tier2_SL6 CA-MOJILL-CLUMEG-T2 CA-MOJILL-CLUMEG-T2_MCORE CA-SCINET-T2 CA-SCINET-T2_MCORE CA-VICTORIA-WESTGRID-T2 CA-VICTORIA-WESTGRID-T2_MCORE CERN-P1_MCORE CERN-PROD_CLOUD_MCORE <b>CONNECT</b> <b>CONNECT_CLOUD</b> <b>CONNECT_MCORE</b> GPPM_MCORE CSCS-LCG2_MCORE CSCS-TODI DESY-HH_MCORE DESY-ZN FZK-LCG2_HI FZK-LCG2_MCORE GoeGrid HU_ATLAS_Tier2 HU_ATLAS_Tier2_MCORE IAAS IAAS_MCORE IFAE_MCORE IFIC_MCORE IN2P3-CC IN2P3-CC-T2 IN2P3-CC_HIMEM IN2P3-CC_MCORE INFN-FRASCATI_MCORE INFN-MILANO-ATLAS_MCORE INFN-NAPOLI-ATLAS_MCORE INFN-NAPOLI-RECAS_MCORE INFN-ROMA1_MCORE INFN-ROMA3_MCORE INFN-T1 INFN-T1_MCORE LPC_MCORE LPSC_MCORE LRZ-LMU LRZ-LMU_MUC_MCORE Lucille_CE Lucille_MCORE MPPMU <b>MWT2_MCORE</b> <b>MWT2_SL6</b> NIKHEF-ELPROD_MCORE <b>OU_OCHEP_SWT2</b> <b>OU_OCHEP_SWT2_Install</b> <b>OU_OSCER_ATLAS</b> <b>OU_OSCER_ATLAS_MCORE</b> <b>OU_OSCER_ATLAS_OPP</b> RAL-LCG2_MCORE RAL-LCG2_SL6 ROMANIA07_MCORE SARA-MATRIX_MCORE SFU-LCG2 <b>SLACKRD</b> <b>SLACKRD_LMEM</b> <b>SLACKRD_MP8</b> <b>SWT2_CPB</b> <b>SWT2_CPB_MCORE</b> SIGNET_MCORE TOKYO_HIMEM TOKYO_MCORE TRIUMF TRIUMF_HIMEM TRIUMF_MCORE Taiwan-LOG2 Taiwan-LOG2_HIMEM Taiwan-LOG2_MCORE UAM-LOG2_MCORE UIO_MCORE UKI-NORTHGRID-OMUL_MCORE UKI-NORTHGRID-LIV-HEP_MCORE UKI-NORTHGRID-MAN-HEP_MCORE UKI-SCOTGRID-GLASGOW_MCORE UNI-FREIBURG_MCORE <b>UTA_SWT2</b> <b>UTA_SWT2_MCORE</b> pic_HIMEM pic_MCORE praguekg2 wuppertalprod wuppertalprod_HI wuppertalprod_MCORE</p>								

Site attribute summary	
allowdirectaccess (2)	False (489) True (60)
allowfax (2)	False (43) True (506)
category (4)	analysis (213) multicloud (150) production (294) test (76)
cloud (13)	CA (40) CERN (30) DE (69) ES (20) FR (50) IT (48) ND (27) NL (39) OSG (18) RU (6) TW (10) UK (78) US (114)
comment_field (49)	"" (1) 31637 (1) 43245 (1) Change.Queue.Name (1) Debug.CE.overload (2) Decommissioned (2) Do.Not.Set.Online (37) ELOG.32521 (1) HC.Blacklist.set.online (266) HC.Blacklist.set.test (10) HC.Test.Me (26) HCTesting (1) HLT.repro (1) Manual.Testing (1) Mcore.Tests.OK (2) New.Queue (1) None (25) NotInUse (1) Retiring.leave.off (1) Set.brokeroff (1) Site.Test.Queue (3) THE.ELOG.NUMBER.14893 (1) Test.Queue.Should.Be.Left.Test (3) TestComment (1) Testing (1) To.Be.Decommissioned (1) To.Be.Decommissioned (1) all.ok.ADG.20140819 (3) checkDirctIO (1) do.not.set.online (2) done.by.AndreuPacheco (1) eLog.31637 (9) eLog.46661 (1) eLog.28951 (2) eLog.33686 (1) eLog.49116 (1) end.of.US.LFC.downtime (1) for tests with HPC at NERSC (1) leave.it.to.test (1) misconfig (5) only (1) overruling HC test (1) set queue to broker off (1) set.offline.by.Switcher (6) start.BNL.downtime.16.Dec (9) stay.broker.off (1) test.only (4) to.remain.brokeroff.do.not.set.online (3)
copytool (12)	BNLdcp (12) cp (11) gfal-copy (2) log-cp2 (28) logcp (10) logcp2 (341) lsm (67) mv (41) storm (2) xcp (6) xrdcp (21)

# Sites

region (29)	Armenia (4) Australia (6) Austria (4) BELGI (26) Canada (32) Chile (4) China (2) Czechia (7) France (36) GR (2) Germany (41) Holland (16) Israel (9) Italy (42) Japan (9) Nordugrid (34) Poland (5) Portugal (2) Romania (7) Russia (19) SlovakR (4) Spain (16) Switzerland (5) Taiwan (10) Turkey (2) UK (77) US (131) ZA (4)
retry (2)	False (472) True (77)
status (4)	brokeroff (84) offline (59) <b>online (326)</b> test (80)
tier (6)	T0 (18) T1 (134) T2 (95) T2D (215) T3 (80) T3D (7)
timefloor (14)	None (394) 0 (16) 20 (9) 30 (39) 40 (5) 45 (4) 60 (37) 90 (7) 120 (31) 180 (2) 240 (1) 360 (1) 480 (1) 960 (2)

## site attribute summary

Sites (PanDA resources)								
PanDA resource Queue name (where different)	GOC site name	Cloud	Status	Tier	Max mem (MB)	Max time (hr)	Multicloud	Comment
AGLT2_MCORE AGLT2_MCORE-condor	AGLT2	US	online	T2D	33500	71.9	CA,FR,NL,TW,CA,DE,ND,IT,US,UK,ES	
AGLT2_SL6 AGLT2_SL6-condor	AGLT2	US	online	T2D	4100	71.9	NL,IT,CA	HC.Blacklist.set.online
AGLT2_TEST AGLT2_TEST-condor	AGLT2	US	online	T2D	4100		CA,DE	
AM-04-YERPHI prod-ce-yerphi-cluster-grid-am	AM-04-YERPHI	NL	online	T3	3800	96.0		HC.Blacklist.set.online
ANALY_AGLT2_SL6 ANALY_AGLT2_SL6-condor	AGLT2	US	online	T2D	4100	71.9		HC.Blacklist.set.online
ANALY_AGLT2_TIER3_TEST ANALY_AGLT2_TIER3_TEST-condor	AGLT2	US	offline	T2D	4100	71.9		
ANALY_AM-04-YERPHI	AM-04-YERPHI	NL	brokeroff	T3		48.0		Manual.Testing
ANALY_ANLASC	ANLASC	US	brokeroff	T3				

## Site check

ATLAS PanDA monitor Dashboards Tasks Jobs Errors Users Sites Incidents Search Prodsys Services VO Help

PanDA resource AGLT2\_SL6 Built 2014-11-26 14:48 UTC

AGLT2_SL6 information	
GOC name	AGLT2
Queue (nickname)	AGLT2_SL6-condor
Status	online
Comment	HC.Blacklist.set.online
Cloud	US
Multicloud	NL,IT,CA
Tier	T2D
DDM endpoint	AGLT2_PRODDISK
Maximum memory	4.1 GB
Maximum time	71.9 hours
Space	287 TB as of 11-26 09:54
Last modified	2013-06-10 20:46

**job distribution on worker nodes**  
**jobs on the PanDA resource**  
**error page of the PanDA resource**  
**brokerage logs**  
**pilot factory monitoring**  
**site status board**  
**eLogs mentioning the site**  
**DDM transfers to the site**

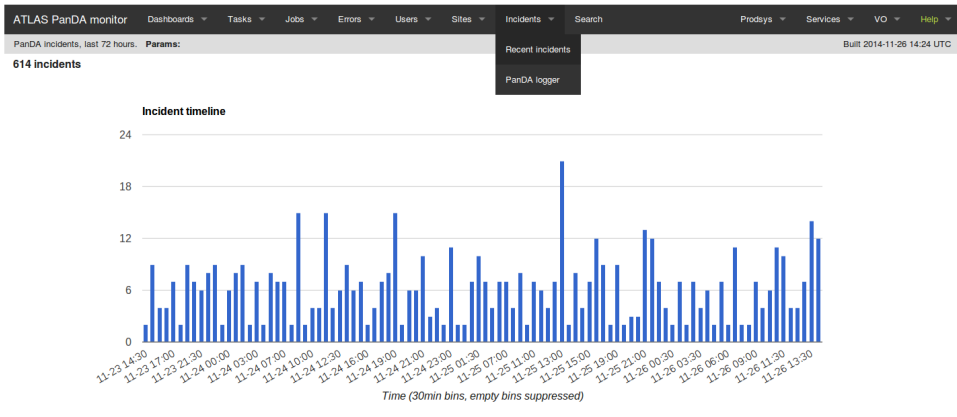
View: [worker nodes](#) [jobs, job errors](#) [brokerage actions](#) [pilots](#) [Site status board](#) [elogs](#) [DDM source destination](#)

Incidents over the last month		
2014-11-18 13:31	setonline: queue=AGLT2_SL6-condor DN=gangarbi	HC.Blacklist.set.online

# Incidents

Incidents → Recent incidents

- queues manipulation



catennov

type (1) queuecontrol(614)

summary

## Recent Incidents

2014-11-26 14:04 setonline: queue=ZA-UJ-glite-ce-pbs DN=gangarbt HC.Blacklist.set.online

2014-11-26 14:04 setmanual: queue=ZA-UJ-glite-ce-pbs DN=qanqarbt HC.Blacklist.set.manual

recent incidents

# Incidents

Incidents → PanDA logger

- brokerage logs

ATLAS PanDA monitor

Dashboards ▾

Tasks ▾

Jobs ▾

Errors ▾

Users ▾

Sites ▾

Incidents ▾

Search

Prodsys ▾

Services ▾

VO ▾

Help ▾

PanDA logger, last 24 hours. **Params:**

Built 2014-11-26 14:24 UTC

Recent Incidents

PanDA logger

View recent

errors

, warnings

831183 logger entries

Category	Type	Level(count)
<a href="#">panda.mon.bamboo</a>	submit	info(9810)
<a href="#">panda.mon.bamboo</a>	taskbrokerage	debug(4244) info(459) warning(402)
<a href="#">panda.mon.bamboo</a>	update	info(143)
<a href="#">panda.mon.deftcore</a>	action	info(9)
<a href="#">panda.mon.deftcore</a>	service	error (3)
<a href="#">panda.mon.dev</a>	brokerage	warning(2)
<a href="#">panda.mon.dev</a>	pilotLog	info(1)
<a href="#">panda.mon.dev</a>	reassignJobs	info(1)

# Search

on a main page or search page

Search	
PanDA job ID or name	<input type="text"/> <input type="button" value="Submit"/>
Batch ID	<input type="text"/> <input type="button" value="Submit"/>
Task ID	<input type="text"/> <input type="button" value="Submit"/>
Task name	<input type="text"/> <input type="button" value="Submit"/>
Tasks for campaign	<input type="text"/> <input type="button" value="Submit"/>
Tasks for project	<input type="text"/> <input type="button" value="Submit"/>
Tasks for tag	<input type="text"/> <input type="button" value="Submit"/>
Tasks for stream	<input type="text"/> <input type="button" value="Submit"/>
Site	<input type="text"/> <input type="button" value="Submit"/>
User	<input type="text"/> <input type="button" value="Submit"/>
Dataset	<input type="text"/> <input type="button" value="Submit"/>
File	<input type="text"/> <input type="button" value="Submit"/>
Stalled jobs	in <input type="text" value="defined"/> for over <input type="text"/> hours <input type="button" value="Submit"/>
Stalled tasks	in <input type="text" value="registered"/> for over <input type="text"/> hours <input type="button" value="Submit"/>

job ID (e.g. 2316995371)

batch ID (e.g. 1718606.cc-  
mgmt1.campuscluster.illinois.edu)

task ID (e.g. 4420250)

task name (wildcards support) (e.g.  
mc14\_13TeV.148273.MadGraphPythia\_  
AUET2BCTEQ6L1\_SM\_GG\_onestepCC\_  
1185\_785\_385.evgen.e3297)

campaign of tasks (e.g. MC14a)

project of tasks (e.g. mc, data, valid, ...)

tag of tasks (e.g. e3297)

stream of tasks (e.g. MadGraphPy-  
thia\_AUET2B\_CTEQ6L1\_pMSSM\_hEW\_  
7938970\_EMuFilter)



# Search

on a main page or search page

Search	
PanDA job ID or name	<input type="text"/> <input type="button" value="Submit"/>
Batch ID	<input type="text"/> <input type="button" value="Submit"/>
Task ID	<input type="text"/> <input type="button" value="Submit"/>
Task name	<input type="text"/> <input type="button" value="Submit"/>
Tasks for campaign	<input type="text"/> <input type="button" value="Submit"/>
Tasks for project	<input type="text"/> <input type="button" value="Submit"/>
Tasks for tag	<input type="text"/> <input type="button" value="Submit"/>
Tasks for stream	<input type="text"/> <input type="button" value="Submit"/>
Site	<input type="text"/> <input type="button" value="Submit"/>
User	<input type="text"/> <input type="button" value="Submit"/>
Dataset	<input type="text"/> <input type="button" value="Submit"/>
File	<input type="text"/> <input type="button" value="Submit"/>
Stalled jobs	in <input type="text" value="defined"/> for over <input type="text"/> hours <input type="button" value="Submit"/>
Stalled tasks	in <input type="text" value="registered"/> for over <input type="text"/> hours <input type="button" value="Submit"/>

site name (e.g. CONNECT)

user name (e.g. mehlhase)

dataset name (e.g.

data12\_8TeV.00204240.physics\_Muons.

merge.DAOD\_HIGG2D4.r5724\_p1751\_

p1784\_tid04419454\_00)

file name (e.g.

EVNT.04420250.\_000012.pool.root.1)

job stuck in state more than N hours

task stuck in state more than N hours

# Others

## Prodsys

- for production managers
- create task, manage task, request, ...

## Services

- links to other monitoring
- pilot factory, DDM dashboard, classic panda, ADC monitoring, ...

## VO

- ATLAS, BigPAnda, ...

## Help

# URL tricks

Range of displayed info can be changed by additional URL parameters (see <http://bigpanda.cern.ch/help/>)

## limits

- `&limit=N` (N jobs loaded from DB)
- `&display_limit=N` (display N jobs)

## time depth

- `&hours=N` or `&days=N` (last N hours/days - use carefully, the load on the DB is heavy for days greater than 3)
- `&earlierthan=Nhours` or `&earlierthandays=Ndays`
- `&date_from=2014-10-01 &date_to=2014-10-03`

The End

<http://bigpanda.cern.ch>