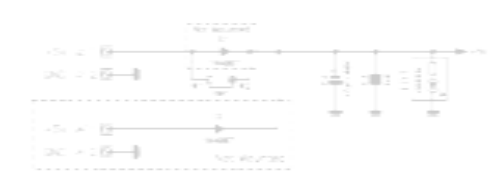
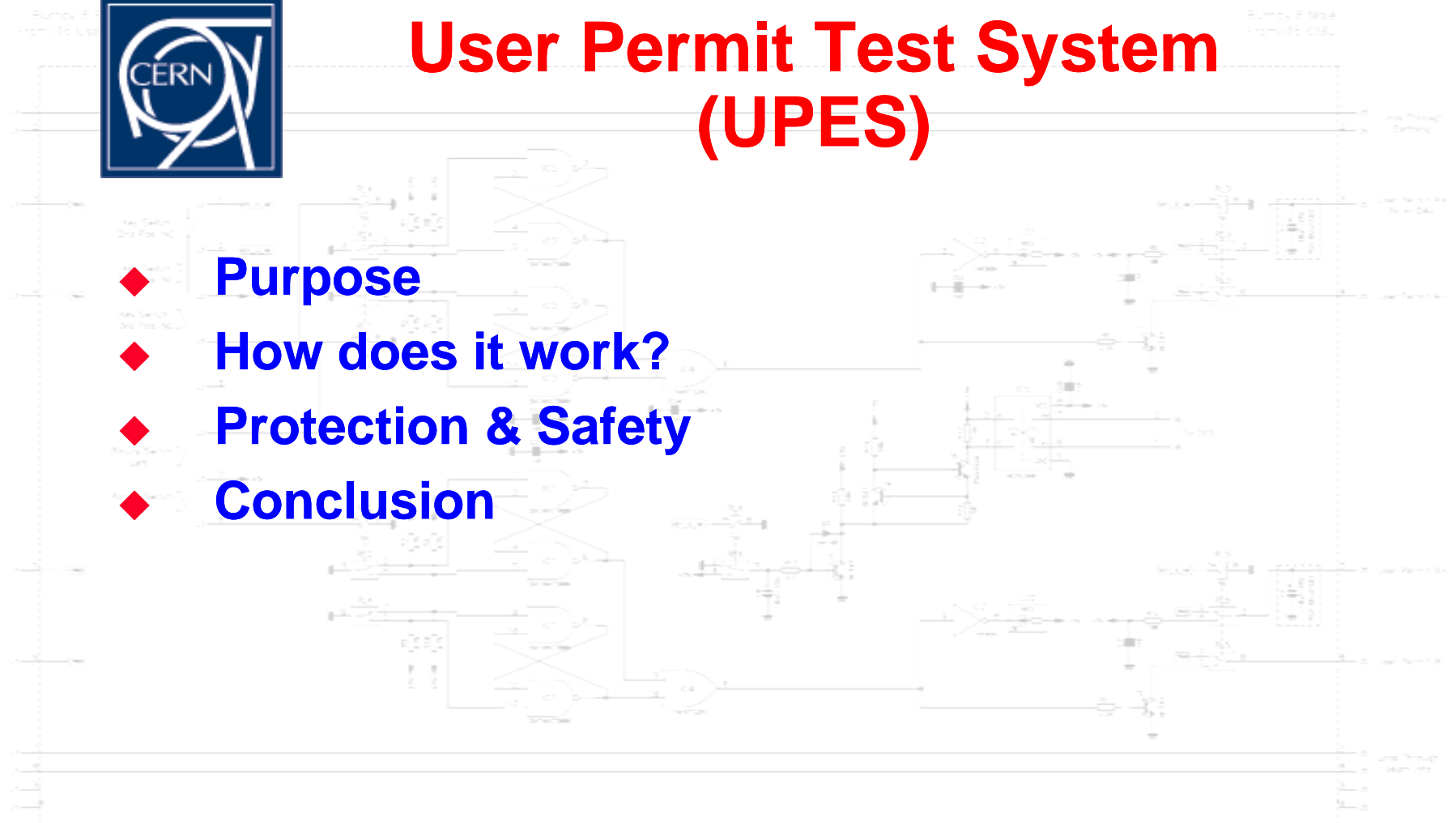




User Permit Test System (UPES)

- ◆ Purpose
- ◆ How does it work?
- ◆ Protection & Safety
- ◆ Conclusion



Project		Rev.	
Project		Designer	Walter-Ferdinand
Designer		Drawn	Clive R. (12/01/2004)
Supervisor		MOA	
Checked		MOB	
Drawn	1/1	Rev	LD4-27775-11-2_004
Scale		NOCE	
LABORATOIRE EUROPEEN POUR LA PHYSIQUE DES PARTICULES EUROPEAN LABORATORY FOR PARTICLE PHYSICS 2004 - 2004		Nr	LD4-27775-11-2



Purpose

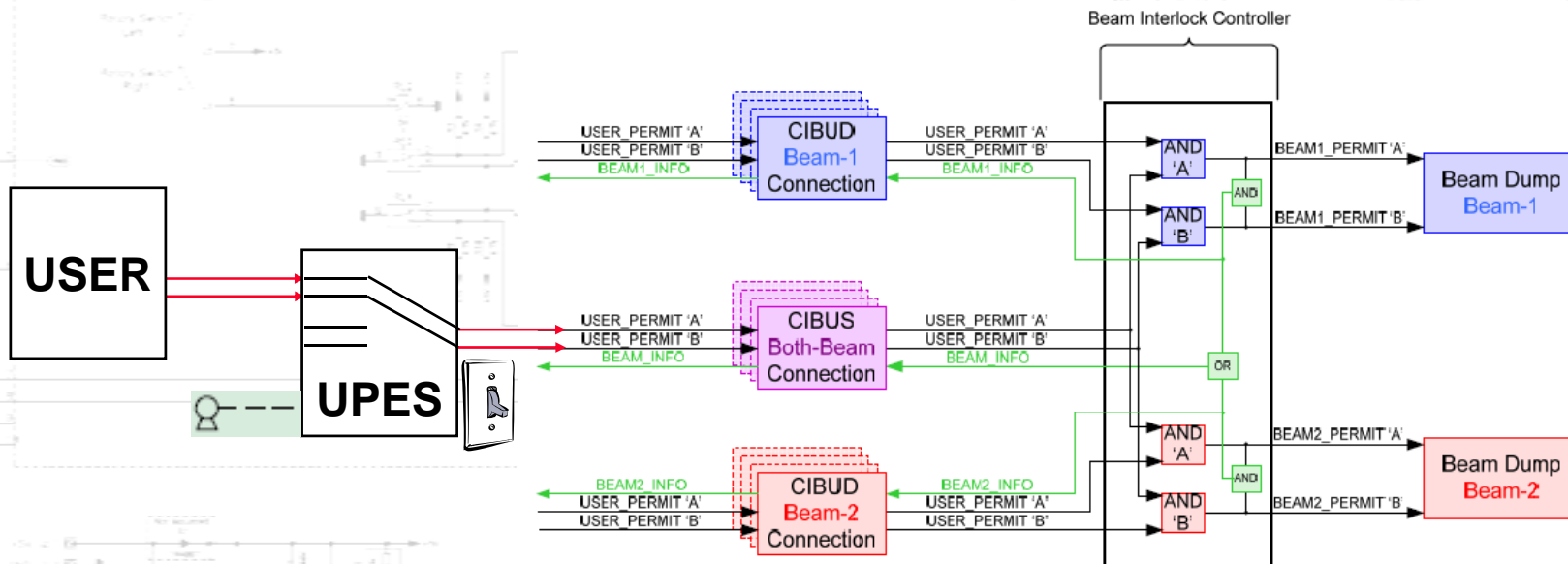
- ◆ **Two main aims:**
 - 1) **Test the CIBU during commissioning and after shutdown to verify the link to the BIS.
(Therefore: Full compatibility to the CIBU)**
 - 2) **Simulate User Permit to allow injection when client system is off-line.**

Project		Name	
Project		Designer: W. K. H. - J. P. F. F.	
Author	Checked/Revised	Drawn: J. C. H.	Drawn: J. C. H. - J. P. F. F.
Supervisor		Scale:	Scale: 1:1
Checked		Scale:	Scale: 1:1
Title		No. 224-21175-1-1-2 - 10/2004	
 LABORATOIRE EUROPEEN DE PHYSIQUE NUCLEAIRE EUROPEAN ORGANIZATION FOR NUCLEAR RESEARCH 2004 - 2004		No. 224-21175-1-1-2 NOCE	



How does it work?

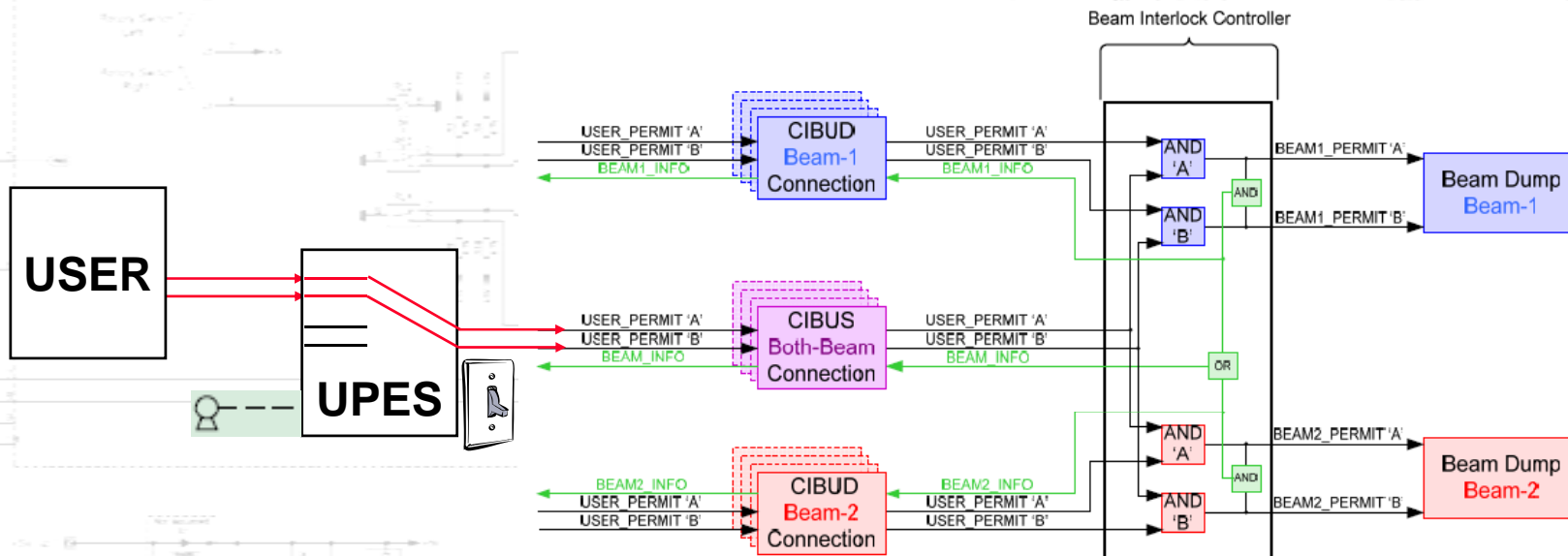
- ◆ 1U interface connected between User System and CIBU (Controls Interlocks Beam User)





How does it work?

- ◆ Normal operation: Wired connection of the User System's flags.

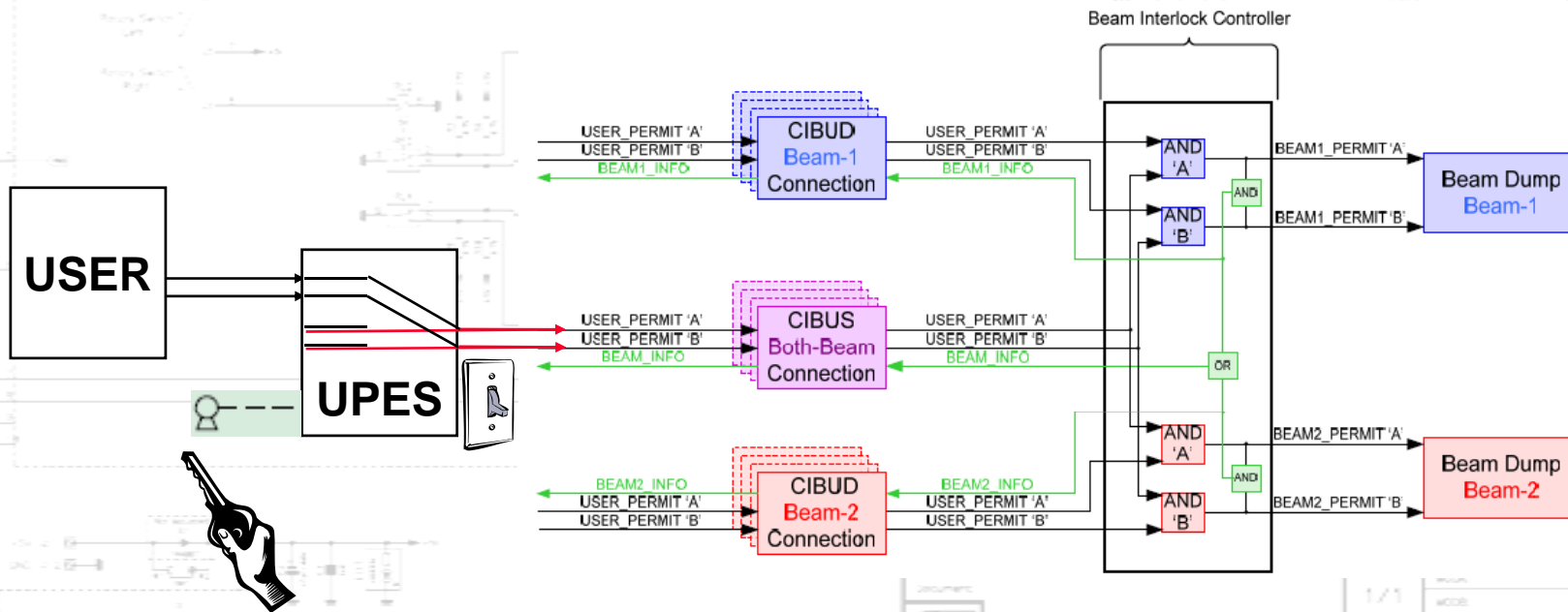




How does it work?

◆ Test mode

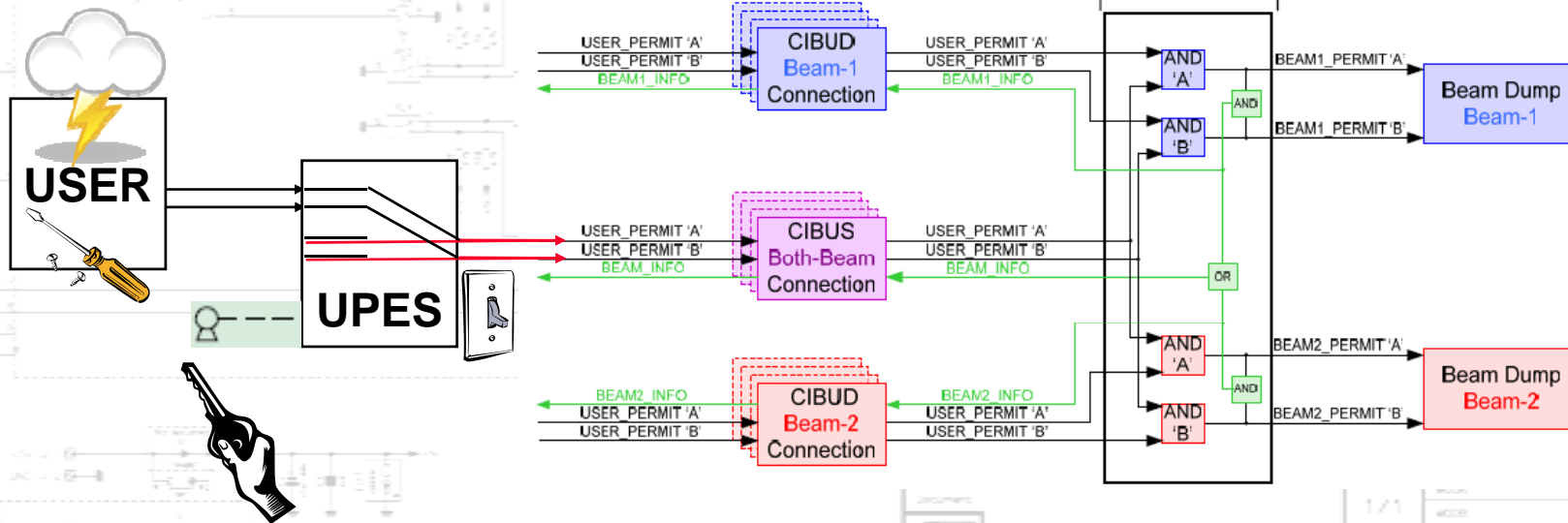
- Decoupling the User System with a Key.
- Test each User Permit channel separately.





How does it work?

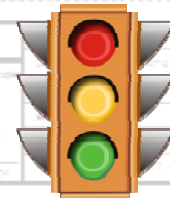
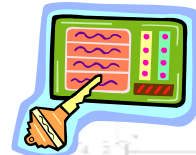
- ◆ **In case User system down or off-line:**
 - Decoupling the User System with a Key.
 - Simulate User Permit flag on redundant CIBU channels.





Protection & Safety

- ◆ **Mounted inside rack**
- ◆ **Key switch protected**
- ◆ **On-board 5V power supply**
(option for 2nd redundant power supply)
- ◆ **Status flag for the Detector Control System.**

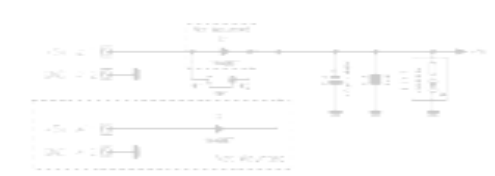


Project:		Document:	
Version:		Scale:	1/1
Author:		Drawn by:	
Checked by:		Date:	
LABORATOIRE EUROPEEN POUR LA PHYSIQUE DES PARTICULES EUROPEAN ORGANIZATION FOR NUCLEAR RESEARCH 2010 - 2014		Doc. No.:	CC-0-2-1111-1-1-1-1
		Page:	1/1
		NOICE	



Conclusion

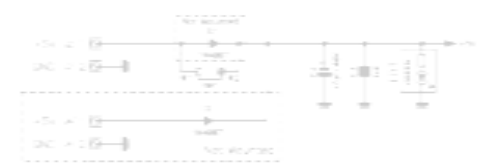
- ◆ Client to BIC test interface.
- ◆ Secure Beam Permit simulation.
- ◆ Prototype will be available this month.



Project/Project	Rev.
Designer	Designer: Martin-Fernandez
Supervisor/Checked	Drawn: C. de R. Date: 22/01/2004
Document	1/1
	MOA
	MOB
	Re: LCA-27775-1-1-2_004001
	NOCE
LABORATOIRE EUROPEEN POUR LA PHYSIQUE DES PARTICULES EUROPEAN ORGANIZATION FOR NUCLEAR RESEARCH 2000 - 2004	
	NO
	22/01/2004



Thank you for your attention



Project		Rev.	
Project		Designer	Walter-Franz F
Designer		Drawn	Clive R. (10/01/2004)
Supervisor		MOA	
Checked		MOB	
Approved		Rev. LCA-27775-11-2, 10/01/2004	NOCE
LABORATOIRE EUROPEEN POUR LA PHYSIQUE DES PARTICULES EUROPEAN LABORATORY FOR PARTICLE PHYSICS 2004 - 2004		Nr.	LCA-27775-11-2