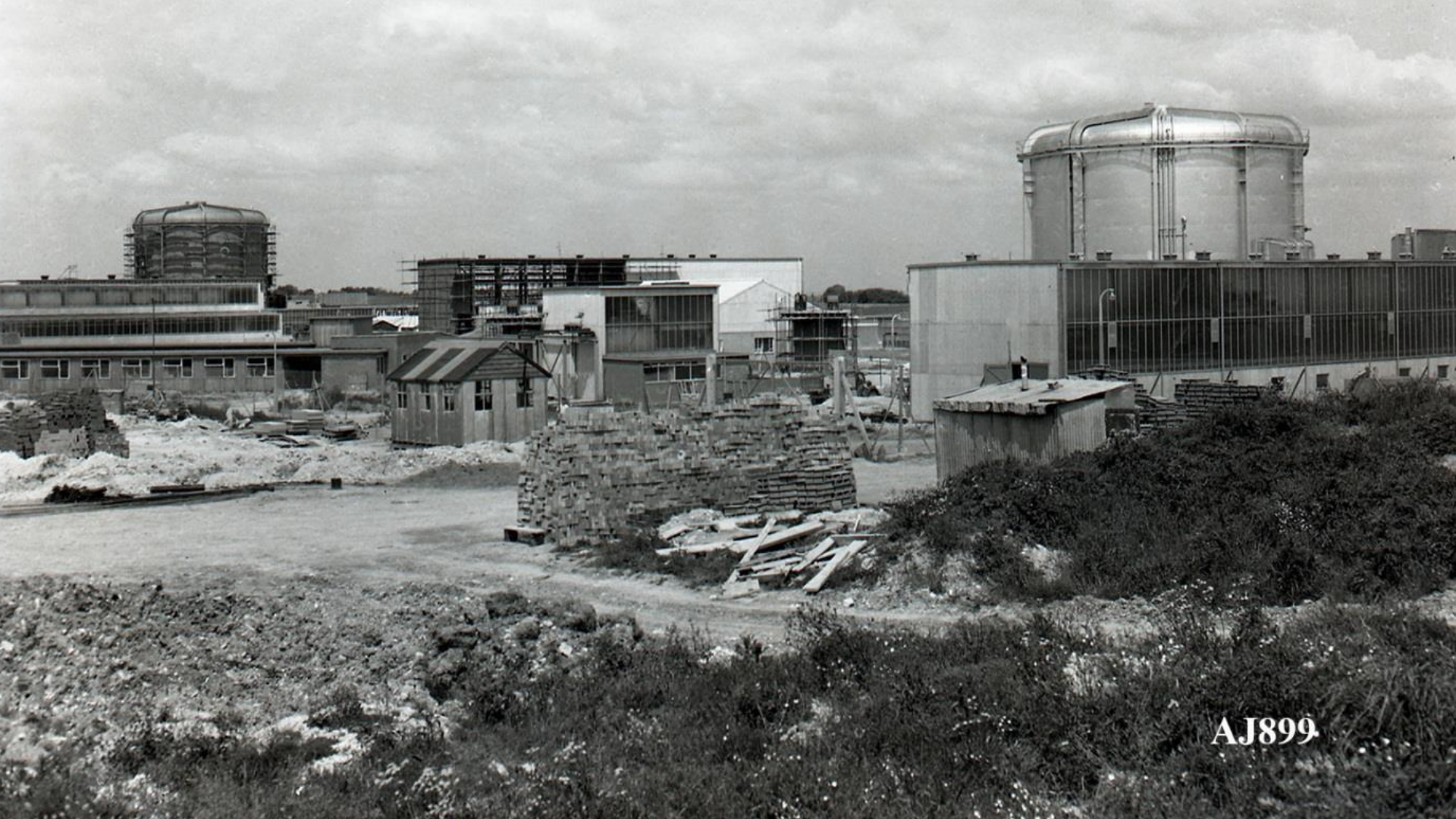




HR15658



AJ899



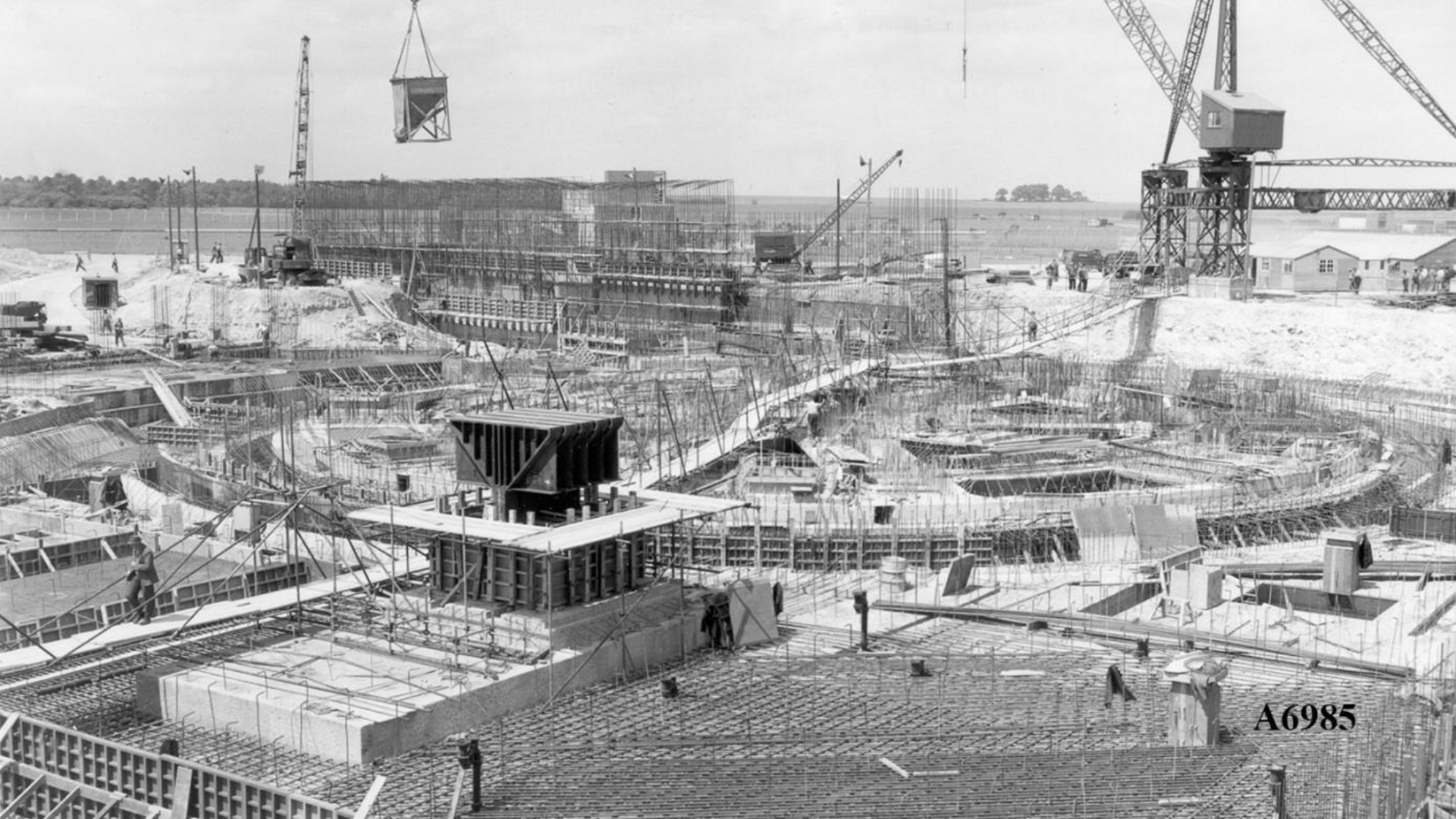
A2605



A5533



A5943



A6985

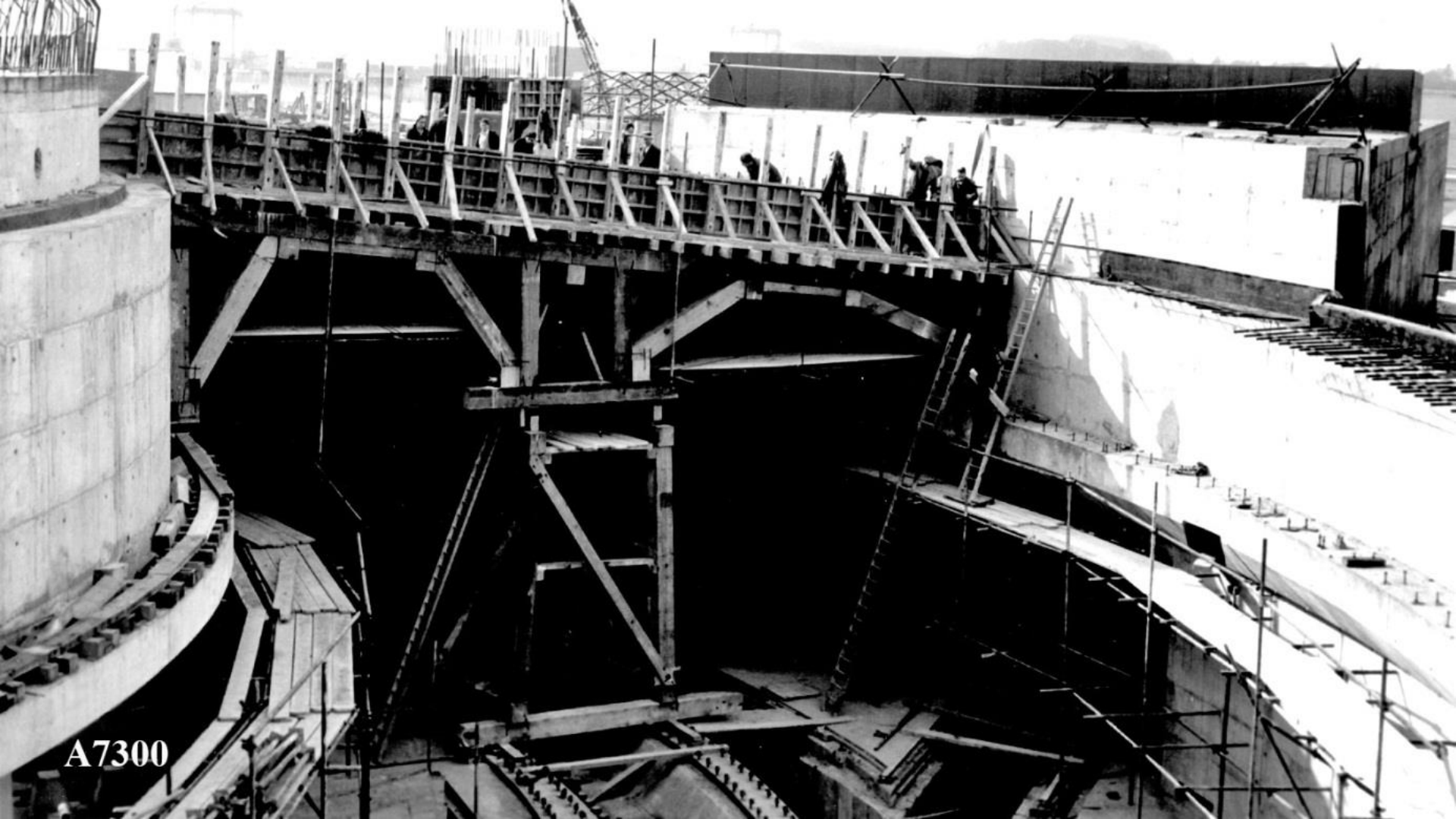


A7018



A7036





A7300



A7673



21988



24435





26771



26994



26944





27000



27009



The Big European Bubble  
at the CERN SPS

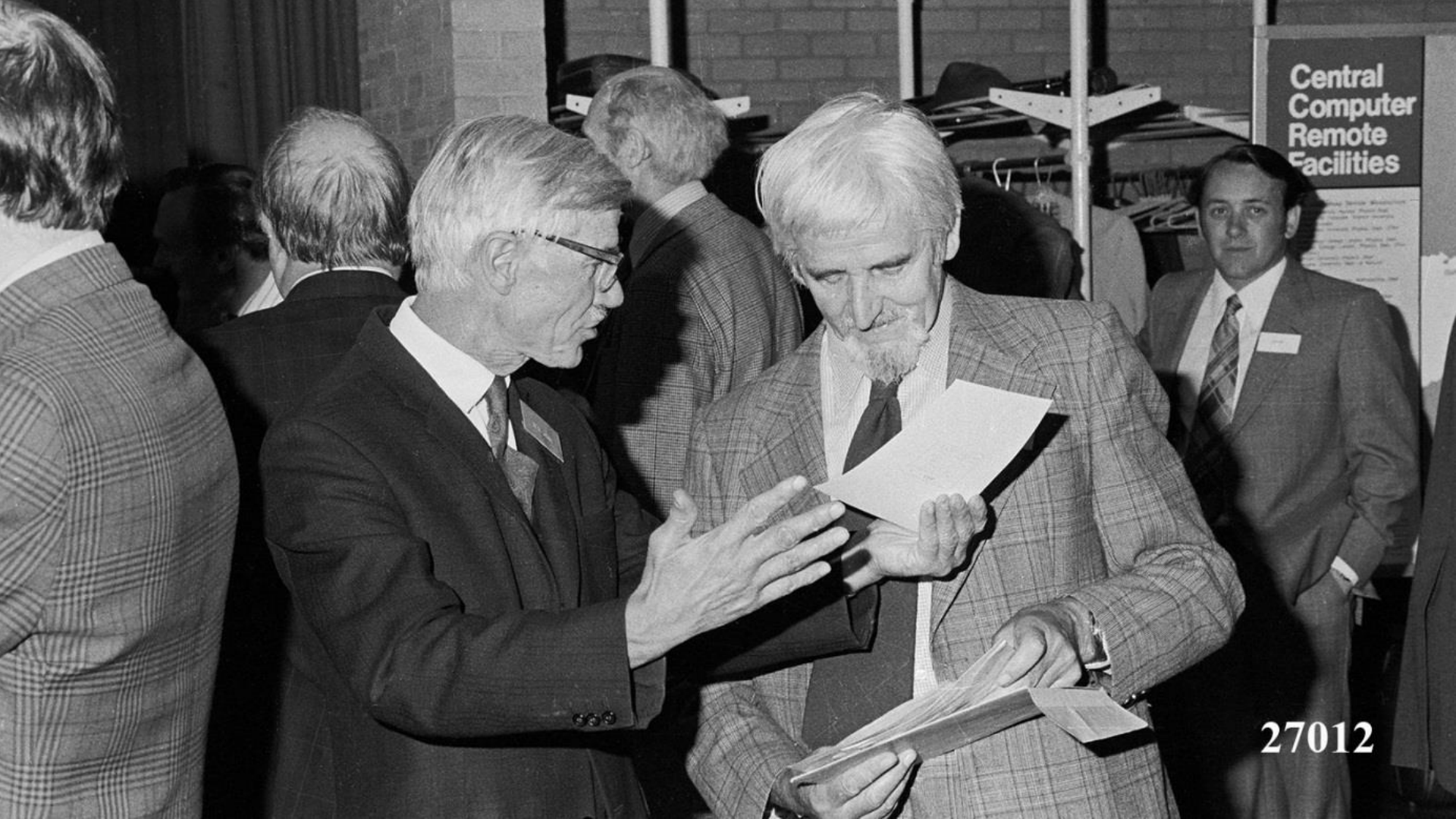
Target in BEBC

J. B. Schmitt

27010



27011



Central  
Computer  
Remote  
Facilities

27012



27019



27020



27025





Physics with  
Track Sens...

27026



27026



27535

## NIMROD OPERATION

Acceleration to ~7 GeV

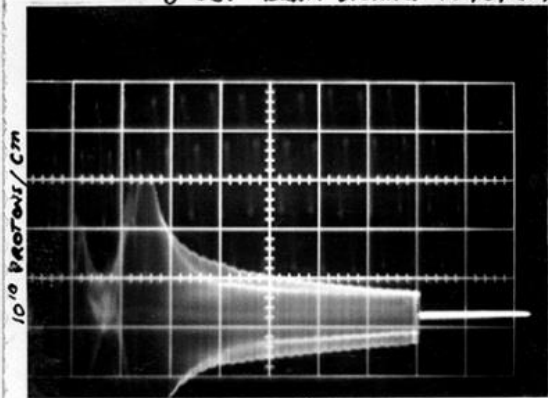
Tuesday 27<sup>th</sup> Aug. 1963

1723 hrs. Acceleration to 6.5 GeV.

1830 hrs. Maximum Energy of 8 GeV attained. (see photo)

1900 hrs. Acceleration of  $10^{10}$  particles to 7 GeV.

8 GeV BEAM SIGNAL. (27/8/63)



● 0.1 SECS/cm

→  
0.1 SECS/cm.

This photo shows the envelope of pulses from the induction electrodes, which are induced by circulating beam.

The envelope is seen to extend to 0.8 secs after injection. The measured field at this time is 15.9 Kgauss, which is the field level corresponding to 8 GeV.

*M. S. J.*

27986



30773





93RC2783



97RC1136



Welcome  
to a Celebration of  
John Lawson's Life in Science



08EC2182



09EC4132