

Workshop on Best Practices for Data Management & Sharing

Part 1: Presentation on data management and sharing practices

Alessandro Annoni

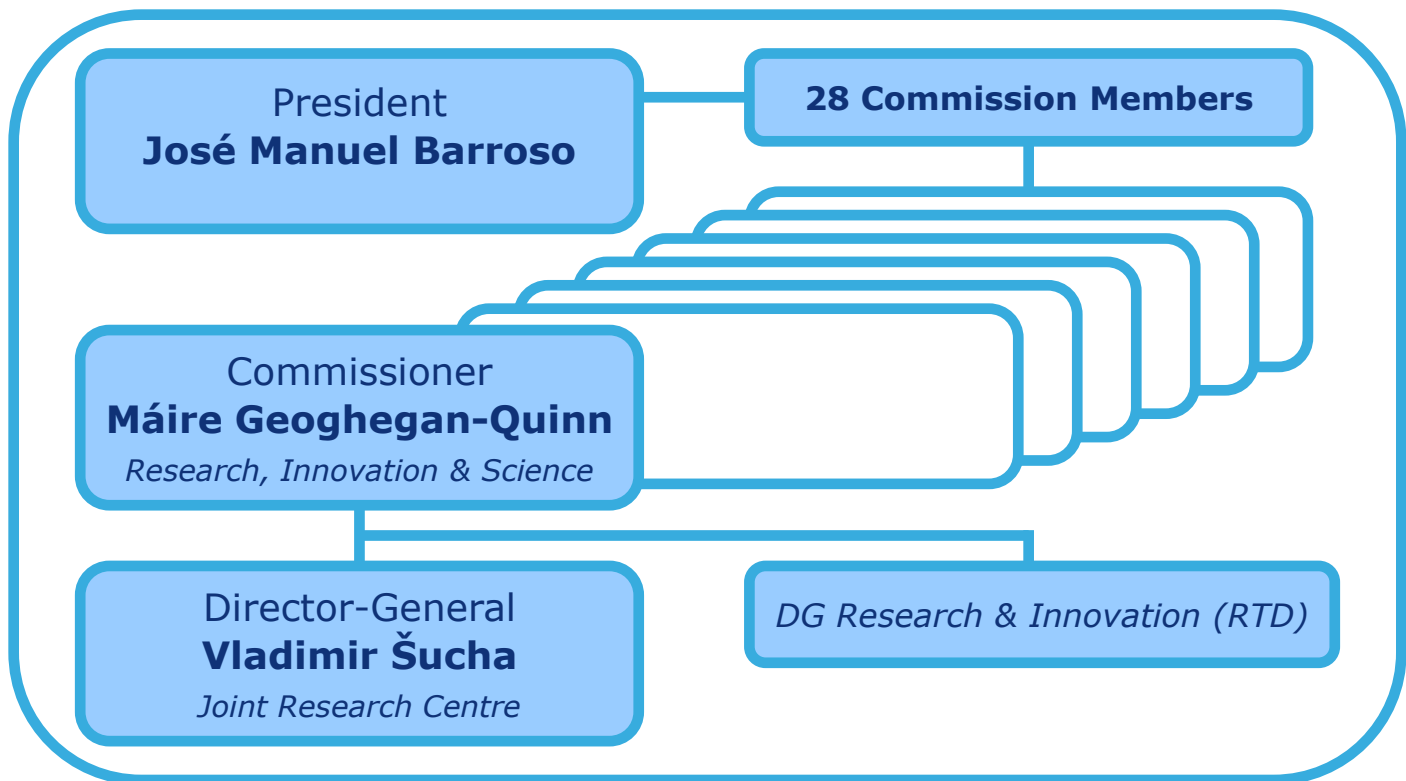
www.jrc.ec.europa.eu

*Serving society
Stimulating innovation
Supporting legislation*



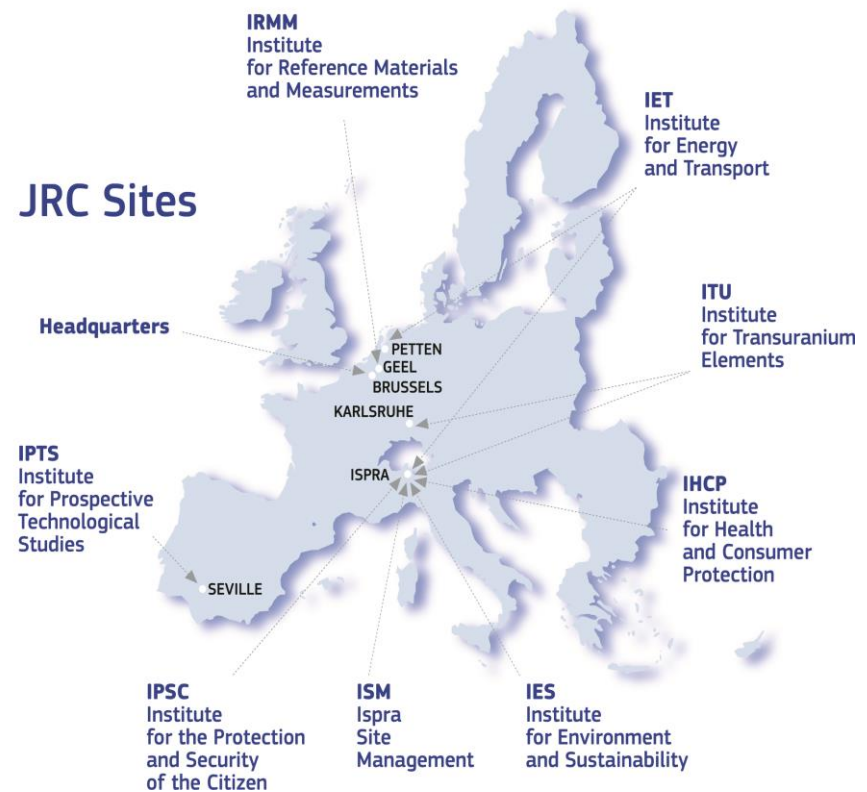


The JRC inside the European Commission



Overview

- Established 1957
- Only Commission Directorate General carrying out direct research
- 7 institutes in 5 countries
- 3,068 staff (35% short-term)
- 622 peer-reviewed scientific publications in 2013
- Budget 2013: €393.29 million, plus €73.9 million earned income



The Joint Research Centre (JRC)

the Commission's in-house science service

- **Provides EU policies with independent, evidence-based scientific and technical support throughout the whole policy cycle.**
- **Works in support of other Commission services, EU Institutions, and Member States, in close cooperation with industry, universities, and research organisations in the EU and worldwide.**
- **Is independent of industrial and national interests, has access to confidential information, and provides on-tap fast and flexible response.**



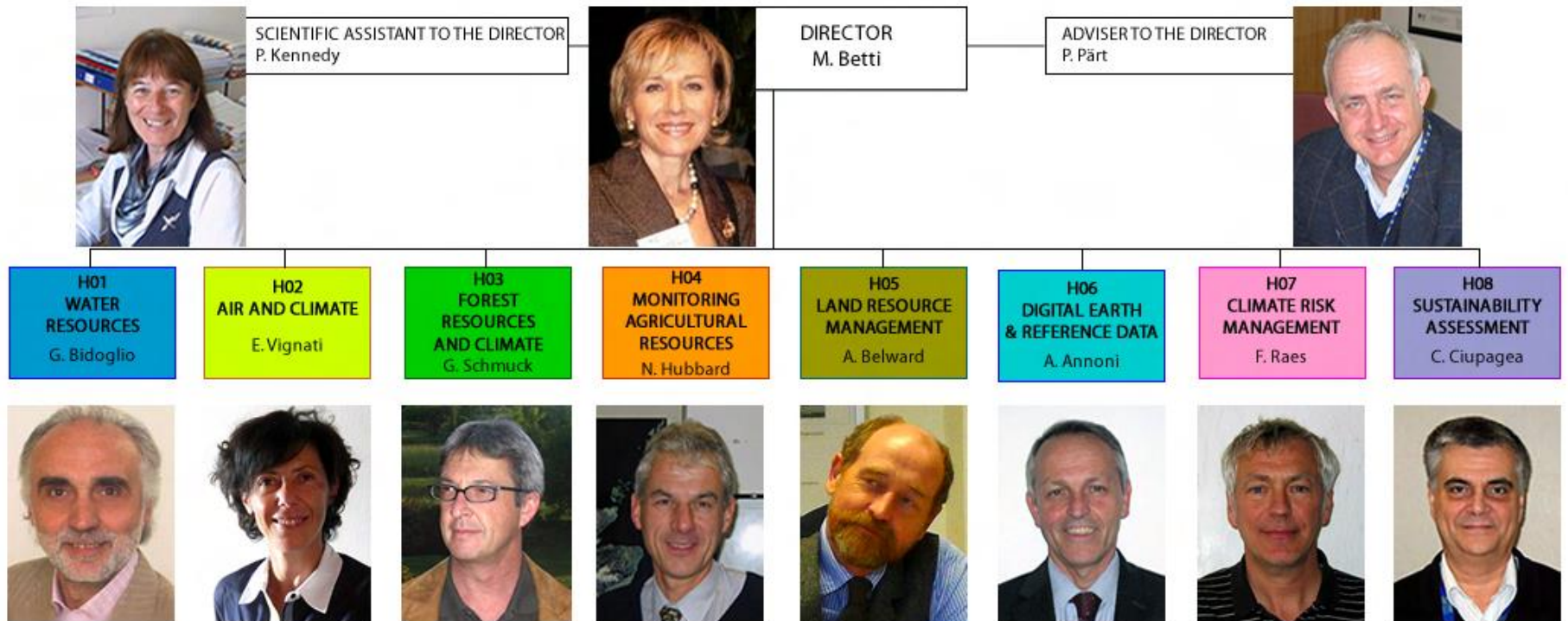
Environment and Sustainability

To provide scientific and technical support to EU policies for the protection of the environment and the more efficient and sustainable management of natural resources at global and continental scales



IES Organisational Chart

Schematic Diagram of the IES (Directorate H)



Background for Workshop

OPEN DATA

- Open Access put forward by the Commission Decision on the reuse of Commission documents

A data portal as a single point of access to documents available for reuse should be set up. In addition, it is appropriate to include in the documents available for reuse the research information produced by the Joint Research Centre. A provision should be adopted to take into account the move towards machine-readable formats. An important improvement with respect to

This Decision should not apply to documents for which the Commission is not in a position to allow reuse, e.g. in view of third party intellectual property rights or where the documents have been received from the other Institutions,

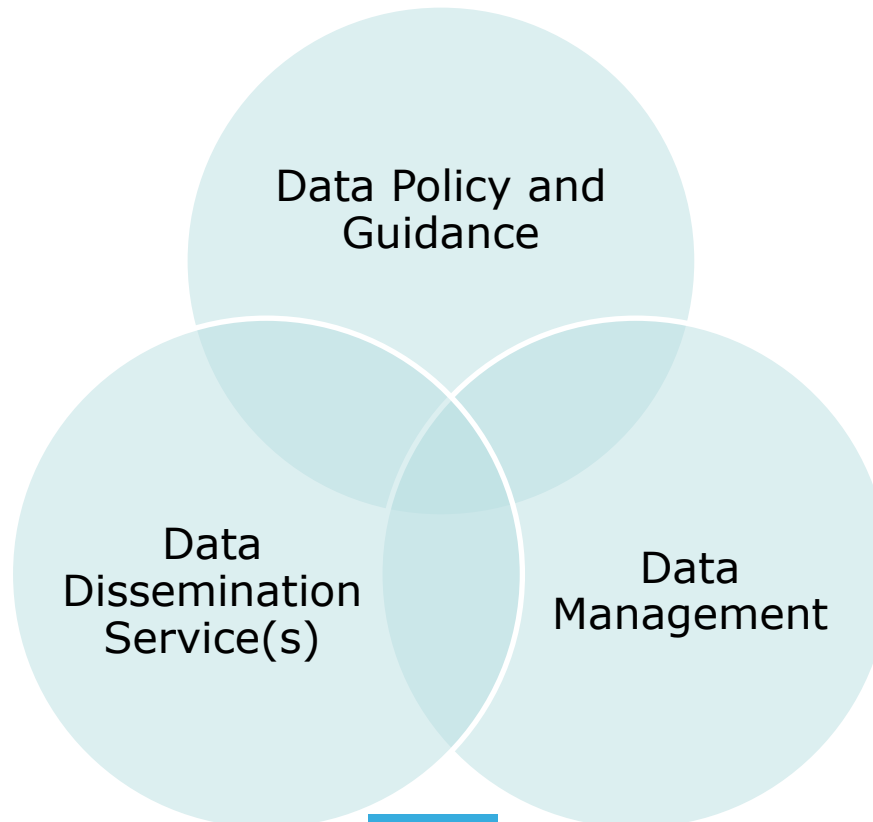
- Overall trend for public move to open data (INSPIRE, G8, ..)
- Open Access to scientific data promoted by Horizon 2020 and by other relevant initiatives (e.g. Research Data Alliance)

JRC strategy for online dissemination of JRC scientific results (publications) already defined and implementation started in 2014

Open Data Project

OPEN DATA

Scope: Ensure that JRC data are made available wherever possible



Challenges

- Currently, data created and acquired from JRC, are available under different licences
- Not clear, even to the data managers, what the implications are for specific licences, e.g., whether reuse of data is subject to attribution?
 - licence unclear when data are based on combination of several sources
- Existing policies often based on custom practices
 - A preliminary assessment showed that only 33 datasets from JRC IES were without any restrictions (Open Access)
- No consistent way to identify, document, and preserve data
- Different means to publish and make data accessible
- No single entry point for discovery, view, and access to JRC research data

Agenda

Monday 14th April

09:00 – 12:30 **Part 1 – Data Management and Sharing Practices** (open session)

12:30 - 14:00 **Lunch**

14:00 – 15:00 **Part 1 – Data Management and Sharing Practices** (cont.)

15:30 – 17:45 **Part 2 – JRC data policy** (closed session)

Tuesday 15th April

09:15 – 12:00 **Part 2 – JRC data policy** (cont.)

Agenda – Part 1

- 09:00 – 09:15 **Arrival and coffee**
- 09:15 – 09:30 **Welcome and Introduction**
- 09:30 – 10:00 **RECODE - Enabling Open Access to Research Data in Europe –**
Rachel Finn and Rod Smallwood
- 10:00 – 10:30 **EUDAT: Data sharing and management in a collaborative data**
infrastructure – Rob Baxter
- 10:30 – 11:00 ***Coffee break***
- 11:00 - 11:30 **Data is the New Oil – Keith Jeffery**
- 11:30 – 12:00 **Open Access & Data Management: the INFN Experience –**
Marcello Maggi
- 12:30 - 14:00 Lunch***
- 14:00 - 14.30 **Exascale, Sustainable Long-Term Data Preservation – Jamie**
Shiers
- 14:30 – 15:00 **PANGAEA – Research Data enters Scholarly Communication –**
Michael Diepebroek

Thank you for your attention!

www.jrc.ec.europa.eu

*Serving society
Stimulating innovation
Supporting legislation*

