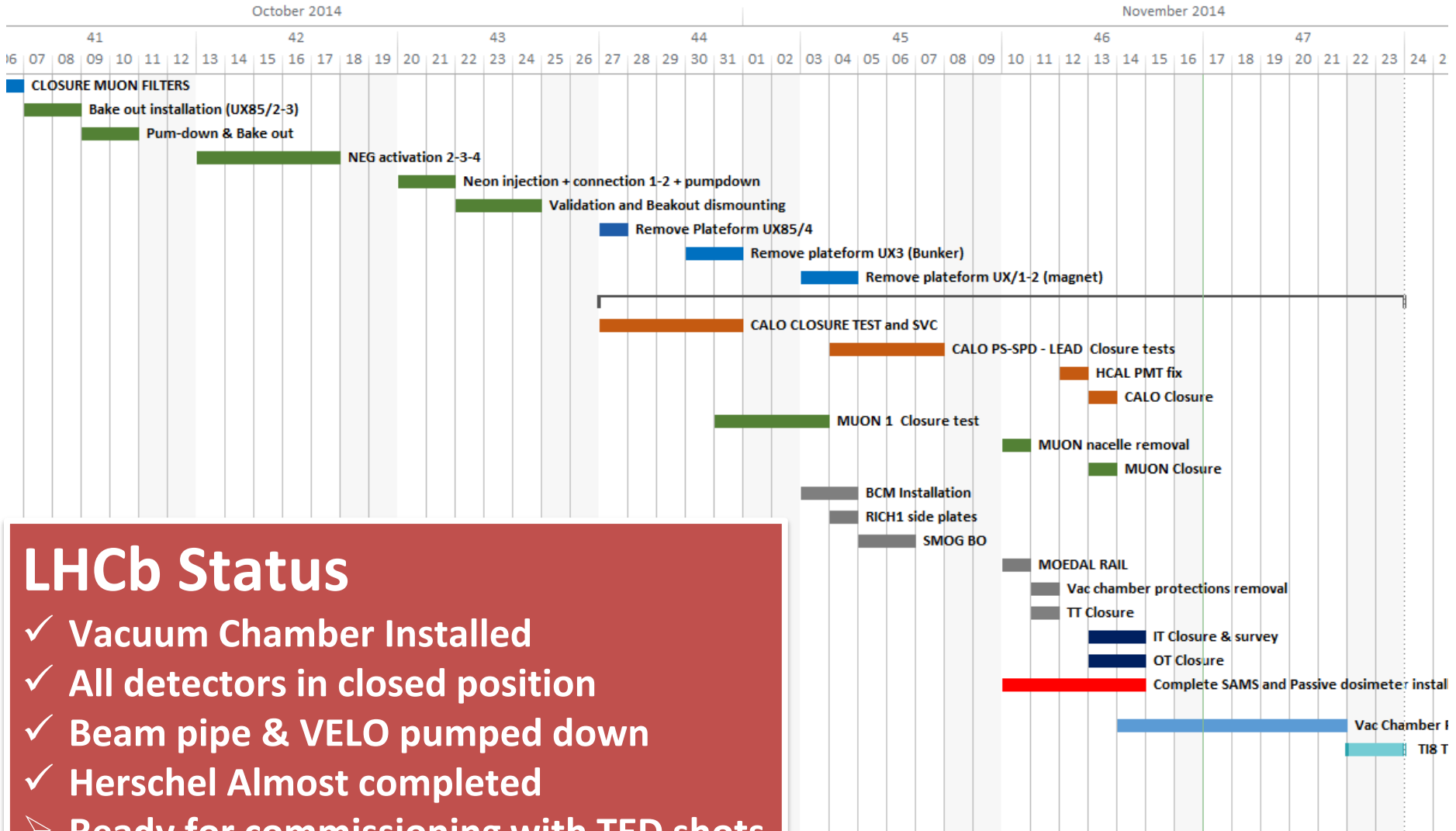


Description of beam-plug and beam-pipe in the simulation



- Besides the outer dimension of the plug (which is important!), we are basically back for Run II where the MC description has been for Run I.
- We learned about the measures necessary to take in order to modify an irradiated piece of iron. To be kept in mind for the future.

LHCb Detector Status



LHCb Status

- ✓ Vacuum Chamber Installed
- ✓ All detectors in closed position
- ✓ Beam pipe & VELO pumped down
- ✓ Herschel Almost completed
- Ready for commissioning with TED shots

LHCb Closure Highlights

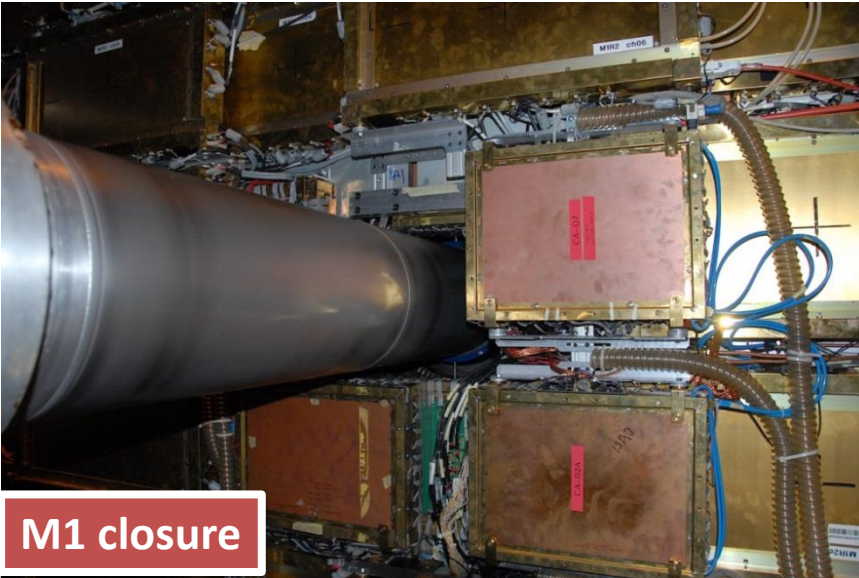
Closing IT/OT



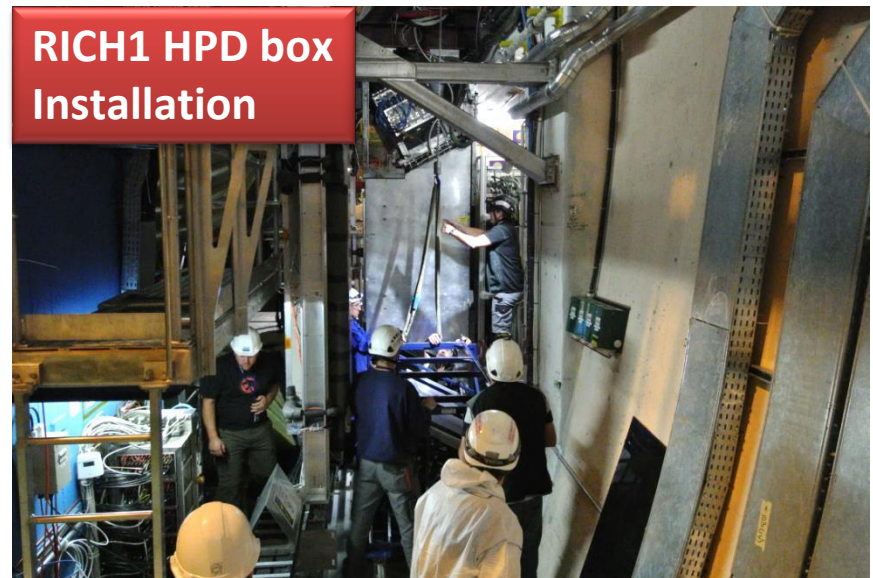
Closing ECAL



M1 closure



RICH1 HPD box Installation



To Do List - MAIN TASKS ONLY

