



The Staff Association

Speaker: Catherine Regelbrugge



Welcome to...

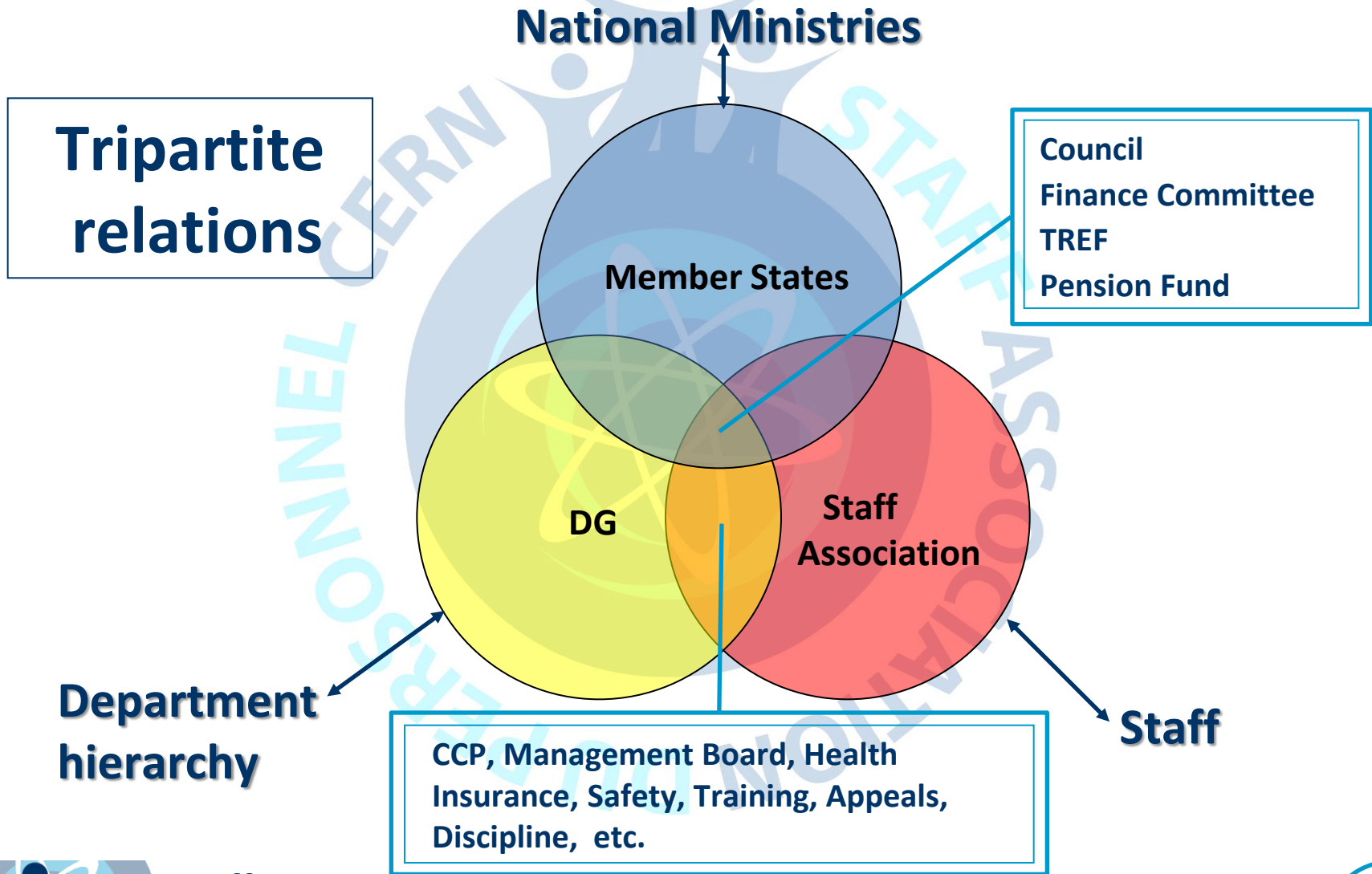
- a multinational laboratory
- a multicultural environment
- a place where science has been bringing people together since 1954

Welcome to CERN!



Employment Conditions

The players in the decision-making process



The Staff Association at CERN

Missions and mandate:

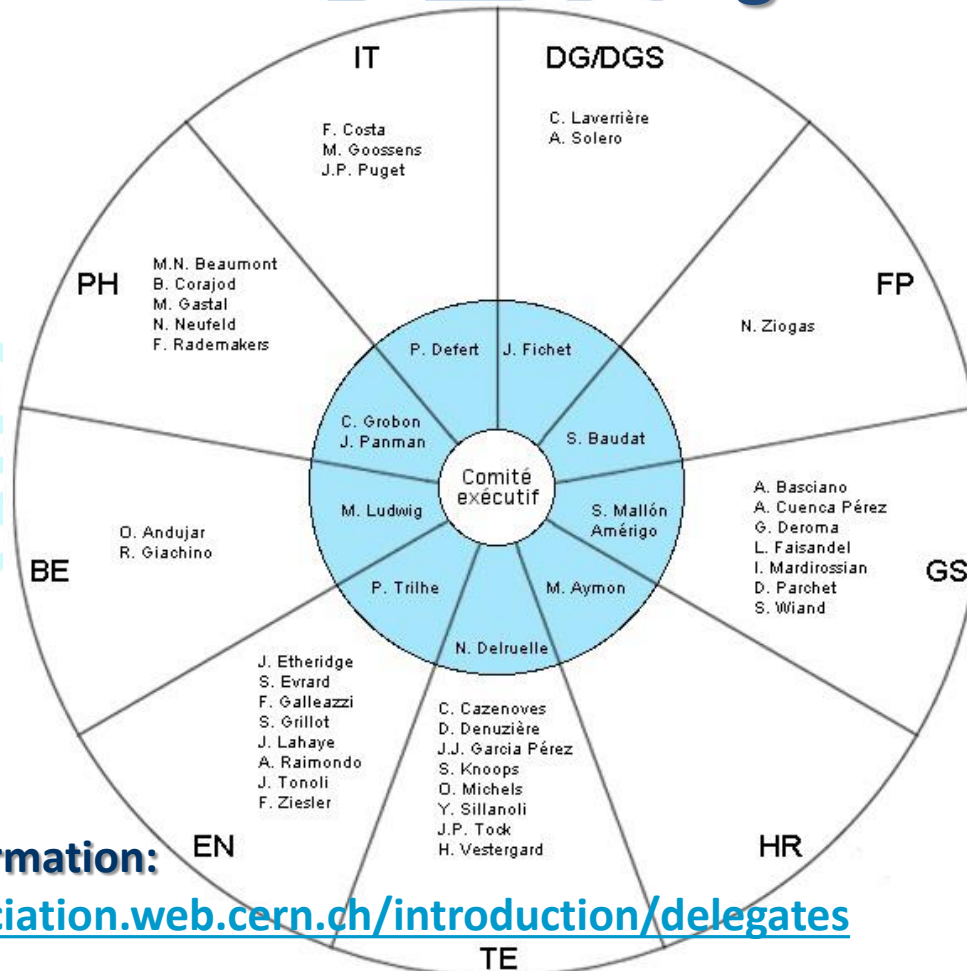
- **Represent...** collectively staff in negotiations *
- **Defend.....** employment conditions (staff & families) *
- **Offer.....** a wide choice of socio-cultural activities

* In conformity with the Staff Rules and Regulations – Chapter VII



The Staff Association at CERN

How the Staff Association is organized:



For updated information:

<http://staff-association.web.cern.ch/introduction/delegates>



The Staff Association & the Staff

- **We represent the staff on a collective basis**
- **What can we do for you on an individual basis?**

Guidance with:

- contractual issues
- interpersonal issues

...from simply listening to support with appeals

- **52 Clubs under the aegis of the Staff Association**

from A to Y: Astronomy to Yoga

- **Cultural activities on CERN site**

concerts, conferences, exhibitions...

- **Social activities on CERN site**

Nursery School, Christmas Children party, Mutual Aid Fund, Long-Term Collections



How do we inform you?

- Our twice-monthly Bulletin:

ECHO

Staff / Association du personnel
Semaine / Week 47 –
17/11/2014 - N°210



- Our staff meetings: at least once a year in autumn
- Our web site: <http://staff-association.web.cern.ch>
-  <https://www.facebook.com/StaffAssociation.Cern>
- Through your staff delegates in your department



Become a member !

- **What you should know**
 - Membership is on a voluntary basis
 - The large majority of the staff have joined the Staff Association
- **Why should you become a member?**
 - For the reasons outlined in this presentation
 - We are the legal representative of the staff on a collective basis
 - We provide services on an individual basis
 - To have access to our insurance against loss of salary
 - To benefit from our special offers (BCGE, FNAC, Aquaparc...)
- **How much does it cost?**
 - Fees: only 50 CHF/year
- **How?**
 - Fill out the online form on our web site



Who can you contact?

- Your departmental delegates

Vos délégués / Your delegates
2014-2015



72819

74224

72761

ch

- The Staff Association
Building 64/R-01

➤ Helena ZERLAU

➤ Catherine REGE

➤ Stéphanie PALL

- Staff Association

sta



Staff
Association



BECOME A MEMBER !

Speaker: Catherine Regelbrugge

