



**US LHC USERS
ORGANIZATION**

US LUO

First Annual Meeting

M. Barnett 24 Oct. 2008



A Users Org without a Lab or a Budget

USLUO is unique in that we are not formally associated with a lab such as SLAC or Fermilab.

CERN has a Users Organization called ACCU = Advisory Committee of CERN Users

★ USLUO has no formal budget yet but support for this meeting and for DC trip.



CERN Users Org and USLUO

“**ACCU** is the forum for discussion between the CERN Management and the representatives of CERN Users to review the practical means taken by CERN for the work of Users of the Laboratory.”

USLUO has “a focus on how best to **enhance scientific participation** in the discoveries expected from [LHC] research. ... help the US LHC community work effectively with their colleagues at CERN **while in the US**, and to adapt to work at CERN and to **living in the environs of the CERN** laboratory. USLUO also provides communication channels between scientists working on LHC experiments, the US agencies supporting this research and the **US Congress**.”



Please become a Member

715 Members

38 ALICE

270 ATLAS

345 CMS


48 LARP


14 LHCb

Election Results for Executive Committee


The results of the election for the Executive Committee are in. The four new, and two returning, members of the committee are:


Dan Green - Fermilab - CMS

John Huth - Harvard - ATLAS 

Boaz Klima - Fermilab - CMS 

Greg Landsberg - Brown - CMS

Sheldon Stone - Syracuse - LHCb 

Julia Thom - Cornell - CMS 

 = new

They have been elected to two-year terms, beginning at the Users Meeting on October 24 and ending in 2010.

They will join the continuing members whose terms expire in 2009:

Mike Albrow - Fermilab - CMS

Michael Barnett - LBL - ATLAS

Bob Clare - UC Riverside - CMS

Sridhara Dasu - University of Wisconsin - CMS

Peter Limon - Fermilab - LARP

Harvey Newman - Caltech - CMS

Outgoing members

Joey Huston

Peter Jacobs

Jimmy Proudfoot

Tony Liss

Election Results for Executive Committee

The results of the election for the Executive Committee are in. The four new, and two returning, members of the committee are:

Dan Green - Fermilab - CMS
John Huth - Harvard - ATLAS 
Boaz Klima - Fermilab - CMS 
Greg Landsberg - Brown - CMS
Sheldon Stone - Syracuse - LHCb 
Julia Thom - Cornell - CMS 

They have been elected to two-year terms starting on October 24 and ending in 2010.

They will join the continuing members

Mike Albrow - Fermilab - CMS
Michael Barnett - LBL - ATLAS
Bob Clare - UC Riverside - CMS
Sridhara Dasu - University of Wisconsin - CMS
Peter Limon - Fermilab - LARP
Harvey Newman - Caltech - CMS

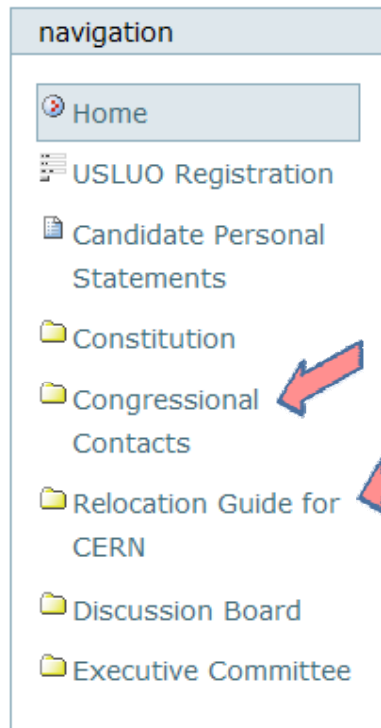
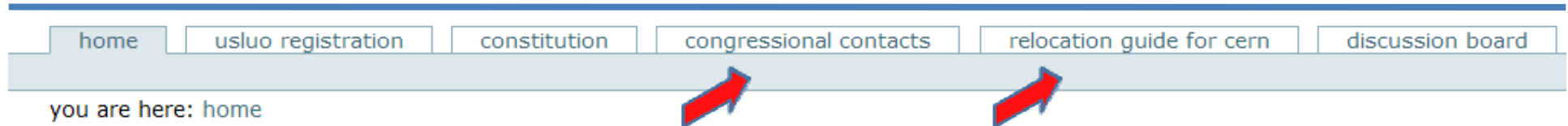
**We would like to
improve diversity
in gender and age.**

Run for the committee.

**See discussion at
Open Forum**



www.USLUO.org Features



USLUO

First US-LHC Users Meeting Friday October 24 at Fermilab

- [Agenda](#)
- [REGISTER for the meeting](#)
- [Graduate Student Poster Competition](#)

Election Results for Executive Committee

The results of the election for the Executive Committee are in. The four new, and two returning, members of the committee are:

Dan Green - Fermilab - CMS
John Huth - Harvard - ATLAS
Boaz Klima - Fermilab - CMS
Greg Landsberg - Brown - CMS
Sheldon Stone - Syracuse - LHCb
Julia Thom - Cornell - CMS

Relocation Guide for CERN

Introduction

See also [🔒 LivingAtCERN](#) for more general info about living in the CERN area.

This page has been created for the US LHC Users Organization. It draws heavily on the extremely informative ATLAS "Coming to CERN" page created by Alexia Leyval. Thanks Alexia!

Please ALSO SEE the [🔒 page maintained by Human Resources at CERN](#).

Please send corrections, or requests for additional information, to [✉ Tony Liss](#).

Before coming to CERN

This is a very nice [🌐 flow chart describing the process of getting your papers](#).

This link has [🌐 general information about CERN rules, moving to/from, housing, insurance, etc.](#)

This has [information about VISAS](#) for France and Switzerland

Upon Arrival

[Transport, registration at CERN, computing accounts](#)

Housing

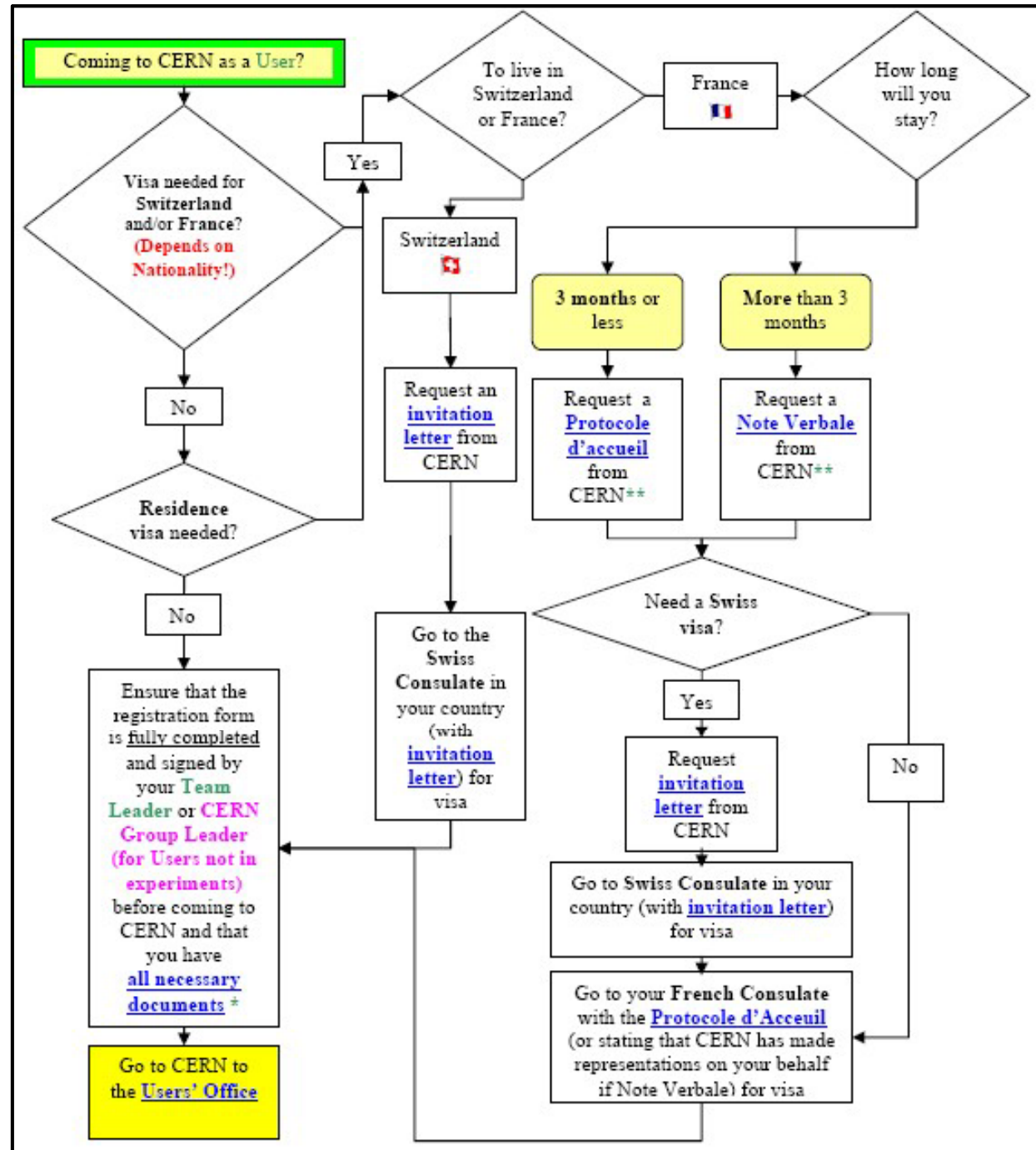
[Short- and long-term accommodation, resources for furniture, cleaning, etc.](#)

Transportation



Coming to CERN as a User?

Nationality?
 Visa needed?
 Where live?
 How long?





More from www.USLUO.org
for CERN USERS

Transportation

[Public transportation, car rental and purchase, licenses, insurance](#)

Health

[Emergencies, hospitals, insurance](#)

Other Practical Information

[Banking, leisure, kids, phone and internet, books, French lessons, taxes and more](#)
by [Jen Nahn](#) — last modified 2008-07-31 10:25



Health Insurance and Taxes

Both are complicated issues:

Health Insurance

- Many different plans from multiple institutions.
- CERN plan is expensive and not always available.
- Hope to find a plan to cover gaps in insurance.

Taxes

- People live in France and Switzerland.
- People receive salaries and COLAs from US or from CERN team accounts.
- People have different visa status.



Health Insurance and Taxes

Gathering information and perhaps hold a forum at CERN

(group includes Al Goshaw, John Huth, Vasken Hagopian, and myself)

Have met with:

- **Head of CERN Users Office**
- **CERN Attorney**
- **Geneva Tax Expert**

Plan to meet:

- **CERN HR expert on taxes**
- **Insurance company contact**



Health Insurance

CERN (Uniqa) health plan: Unica around 460 CHF per month (80% of the fees covered). 920 CHF for less exceptions and for the entire family.

Alternatives (may depend on age):

Switzerland: Swiss Life 318 CHF or 205 with 2000 CHF deductible.

France: 100-270 depending on details



USLUO is Your Organization

Whatever concerns you have

- **as a user based in the US**
- **as a user based at CERN**

**whether it is communication issues,
insurance, cost-of-living, schools for
children, taxes, ...**

**Please bring your concerns to the attention of
USLUO board members.**

Also attend the **Open Forum at the end of the
day**



DC Trip – A Collaboration with Fermilab and SLAC Users Organizations

Congressional Contacts

▲ Up one level

This may contain intro letters, one pager, booklet for congress staffers, letter from Intel chairman, etc.

📄 [One-Pager](#) — by [Jen Nahn](#) — last modified 2008-05-14 07:00
February 2008 Version

📄 [Reverse side of One-pager](#) — by [Jen Nahn](#) — last modified 2008-05-15 07:06
Side two of the one-pager with photos

📄 [Particle Physics in Pictures](#) — by [Jen Nahn](#) — last modified 2008-05-14 07:31
Brochure



What happens in March when the Continuing Resolutions Expires? (from a senior aide on the Appropriations Committee)

“A lot depends on who is elected President.

“By pushing the CR expiration date out until March, the idea is to give the new President a chance to get settled into the office a little bit and then work with that new President on what would likely be a single omnibus appropriations bill that combines the bills already produced by the House and Senate for the remainder of the fiscal year, which would be passed before the current CR expires.”



“From a Democratic majority perspective, the hope is [Sen. Obama] will support appropriations bills at a higher level than President Bush’s budget request.

“Then we would be able to provide the increases for science that were included in the individual bills the House and Senate subcommittees already drafted.”



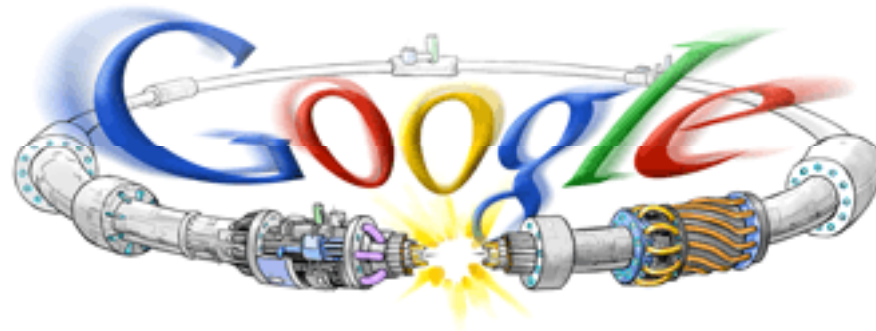
“If Sen. McCain were to be elected, the picture would be different – there might be some effort to strike a deal with President Bush before his term runs out, or they might wait for McCain to take office, but when he does, I would expect him to try to take a hard line on spending increases to live up to his campaigning.

“If he does that, it doesn’t look good for a lot of things – I’ve heard that someone from the McCain campaign said that science would be excluded from his spending freeze the other day, but that statement contradicts what his campaign said in response to questions from *Science*.”



Sept. 10 Impact

We need to take advantage of the tremendous impact of news coverage of the September 10 first beams.



At CERN

- 300 journalists on site.
- Eurovision live satellite feed from 9:00-18:00 plus webcast.
- Images from CCC relayed to media center (Globe)
- Journalists visit experiments control rooms.
- TV media visits to CCC upstairs conference room.

Elsewhere

- Parallel events in several member states.
- Many other events outside member states, including pajama party at Fermilab.



Inside the Globe



Upstairs:

- Big screen
- Operator console (LHC & experiments)
- Experts on hand
- ISDN lines
- Wi-fi
- Stand-up position for TV
- Press office staff on hand (armband)



Downstairs:

- Workspace
- Internet access, cable & wi-fi
- Printers
- Telephones
- ISDN lines
- A/V feeds for TV
- Food and drink!



Outside the Globe

- Eurovision OB truck
- 5 stand-up positions
- Departure point for control room visits





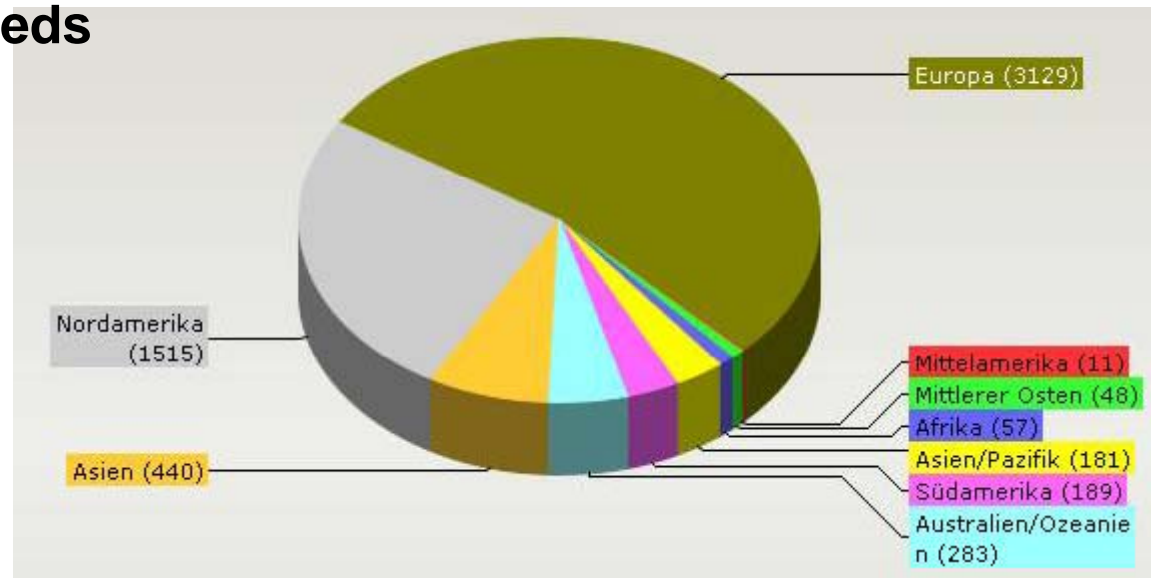
Statistics

From Eurovision

- 450 broadcasters
- 2500 transmissions
- 91 stand-ups
- Audience in hundreds of millions

From CERN

- 260 accredited journalists
- 40 TV stations
- > 40 non accredited





Impact

We need to take advantage of the tremendous impact of news coverage of the September 10 first beams.

Please join us on the Spring trip to DC.

We hope to have some limited travel support from the DPF.



**Thank you to Fermilab and the
Fermilab Research Alliance
and to Fermilab staff including Dan
Green for hosting this meeting and
for their support.**



Join

Please go to
www.usluo.org
and register as a member

Morning Agenda

Welcome - Ramsey Auditorium and One West (08:50-09:00)

- Speakers: ODDONE, Pier

Chair's Report - Michael Barnett (LBNL) - Ramsey Auditorium and One West (09:00-09:20)

Reports from ALICE, ATLAS, CMS and LHCb on Status of Experiments - Ramsey Auditorium and One West (09:20-11:00)

time	[id] title	presenter
09:20	[0] ALICE (00h20')	HARRIS, John
09:40	[1] ATLAS (00h30')	GORDON, Howard
10:10	[2] CMS (00h30')	HADLEY, Nick
10:40	[3] LHCb (00h20')	BLUSK, Steve

Coffee Break - Group Photo on Wilson Hall Steps - Ramsey Auditorium and One West (10:50-11:20)

Status and Plans for LHC, LARP, and Upgrade - Eric Prebys (Fermilab) - Ramsey Auditorium and One West (11:20-11:50)

Perspectives from OSTP - Jean Cottam (OSTP) - Ramsey Auditorium and One West (11:50-12:20)

LUNCH - cafeteria (12:20-13:05)



Coming up

- **Lunch in cafeteria**
- **1:05 pm**
Young Scientist Poster Session
with Dessert and Coffee
2nd Floor Crossover
- **2:20pm**
Report from CERN Users Organization
Darin Acosta (Florida)
Ramsey Auditorium



Afternoon Agenda

13:05->14:20 Young Scientist Poster Competition with Dessert and Coffee (2nd Floor Crossover)

14:20->14:35 Report from CERN Users Organization - Darin Acosta (Florida)

14:35->15:20 Panel with DOE and NSF

Description:

Panel: Moishe Pripstein (NSF), Glen Crawford (DOE-HEP), Gulshan Rai (DOE-NP), Mark Petri (APS Fellow Office of Sen. Durbin / Argonne)

15:20

Wine and Cheese (2nd Floor Crossover)

**16:00->17:00 Magnetic Attraction: A Journalist's View of the LHC's Status in Popular Culture
Alan Boyle (MSNBC)**

Description:

Wine & Cheese Seminar

17:10->18:50 Open Forum

19:00

DINNER - Pizza at the Fermilab Villiage Barn (Kuhn Barn)

7:00pm DINNER – Pizza at the Fermilab Village Barn (Kuhn Barn)

Original Executive Committee

Executive Committee

Committee members and documents

Name	Institution	Collaboration	Term expires
Mike Albrow	Fermilab	CMS	2009
Michael Barnett (Chairperson)	LBL	ATLAS	2009
Bob Clare	UC Riverside	CMS	2009
Sridhara Dasu (Secretary)	University of Wisconsin	CMS	2009
Dan Green	Fermilab	CMS	2008
Joey Huston	Michigan State	ATLAS	2008
Peter Jacobs	LBL	ALICE	2008
Greg Landsberg	Brown University	CMS	2008
Peter Limon	Fermilab	LARP	2009
Tony Liss	University of Illinois	ATLAS	2008
Harvey Newman	Caltech	CMS	2009
Jimmy Proudfoot	Argonne	ATLAS	2008