

Twitter: @twhyntie

MoEDAL, GridPP and the Zooniverse: Citizen Science with Timepix data I

T. Whyntie ^{a,b}

^a Langton Star Centre, ^b Queen Mary University of London

MoEDAL Software Meeting

Tuesday 28th April 2015

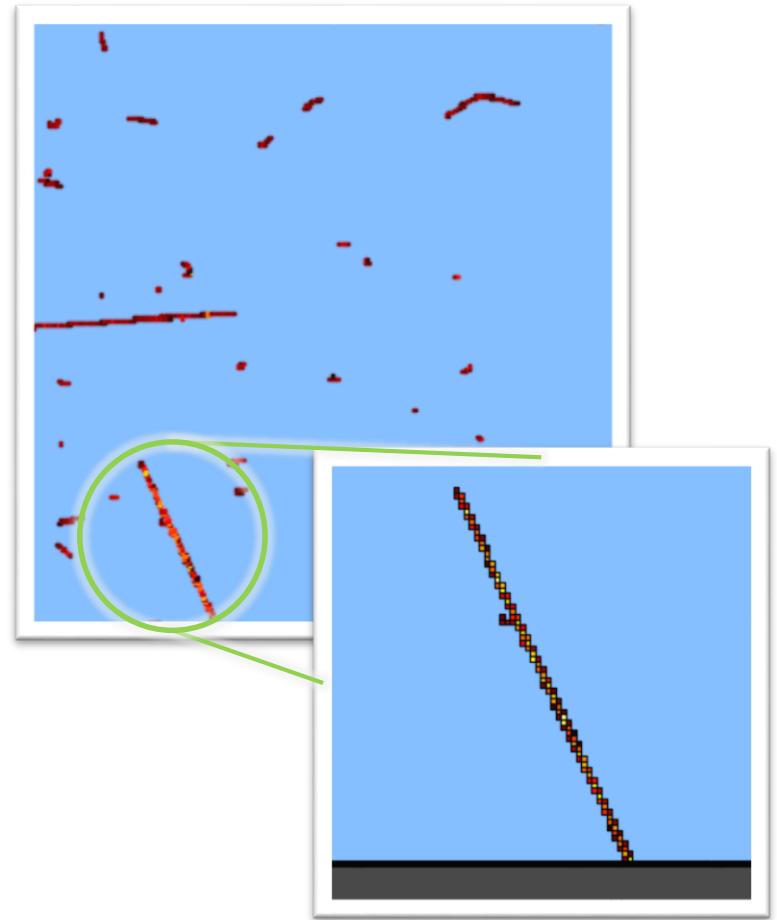


Overview

- Panoptes now functioning.
 - *Can create projects, workflows and subject sets;*
 - *Still creases to iron out but getting there!*
 - *Huge thanks to the Zooniverse team:*
 - <https://github.com/zooniverse/Panoptes-Front-End/issues>
- We have created a demonstration project for Timepix data.
 - *Panoptes Front End: <http://demo.zooniverse.org/panoptes-front-end>*
 - *View the test project “Monopole Quest 003” live [here!](#)*
 - *Click on “Classify Clusters” to start classifying.*

The data

- Frames selected from a random point during the Run 1 F03-W0098 dataset:
 - *TPX01 – closer the Interaction Point;*
 - *Acq. time: 0.001s*
 - *Taken at 5 second intervals*
- Clusters with > 100 pixels selected:
 - *No other requirements (for now);*



Starting point: Classifying Clusters

- What can you see in the cluster? (*Filter, multiple choice*)
- Please use the track tracer to draw lines along any of the tracks you can see. (*Drawing task*)
- Please use the blob marker to outline any blobs you can see
- Please use the track tracer, blob marker, and polygon tool to trace the shapes you can see
- Please mark any high energy regions using the marker tool
- Is there anything unusual in the cluster?



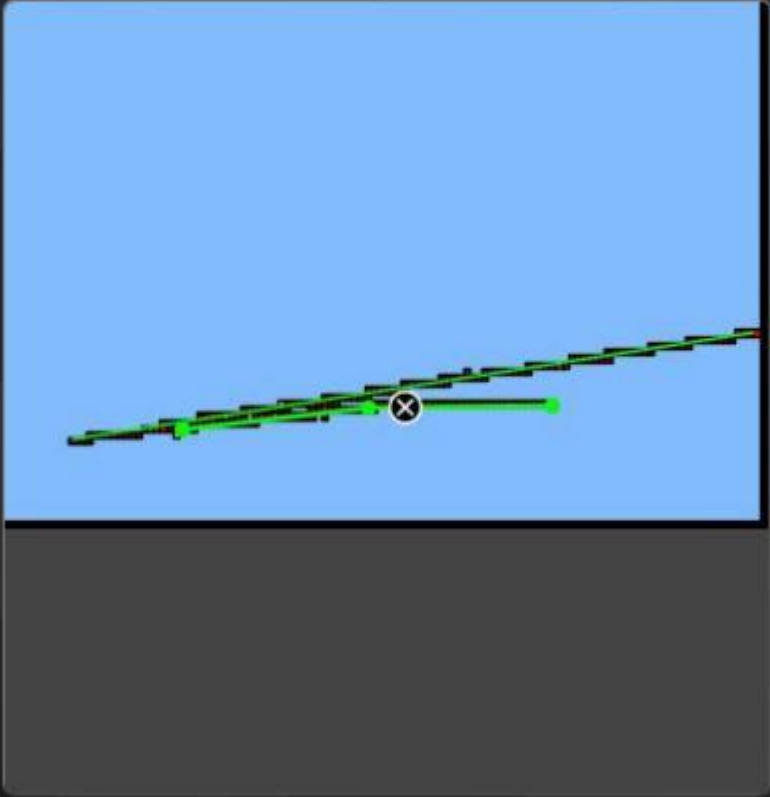
What can you see in the cluster?

- One or more tracks
- One or more blobs
- Multiple shapes (not just tracks or blobs)

Need some help?

Back

Done



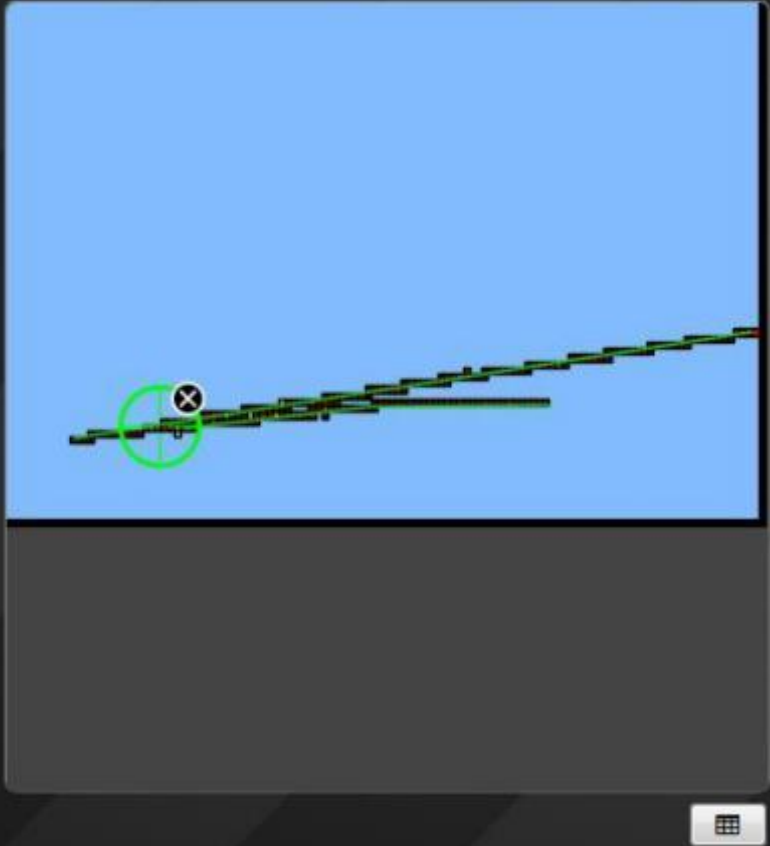
Please use the track tracer to draw lines along any of the tracks you can see

 Track Tracer (2)

Need some help?

Back

Next



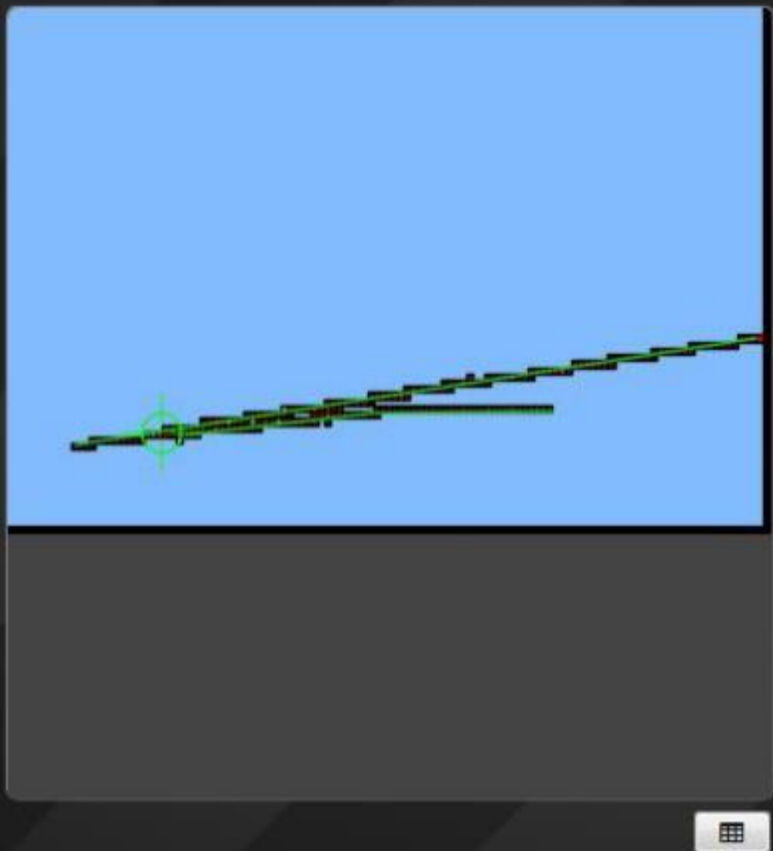
Please mark any high energy regions using the marker tool

High Energy Region Marker (1)

Need some help?

Back

Next



Is there anything unusual in the cluster?

Yes

No

Back

Done



What can you see in the cluster?

- One or more tracks
- One or more blobs
- Multiple shapes (not just tracks or blobs)

Need some help?

Back


Next



Please use the track tracer, blob marker, and polygon tool to trace the shapes you can see

 Track Tracer (1)

 Blob Marker (2)

 Polygon Tool

Need some help?

Back

Next

Next steps

- Keep working with the Panoptes team to iron out bugs.
 - *Ready for production Summer 2015.*
- Check progress on viewing the classification results.
- Refine the classification scheme.
 - *The beauty of Panoptes – we can iterate to develop a robust scheme.*
- Work out how this can be applied to NTD scans.
 - *The drawing tools in particular could be very powerful for what we need to do...*