



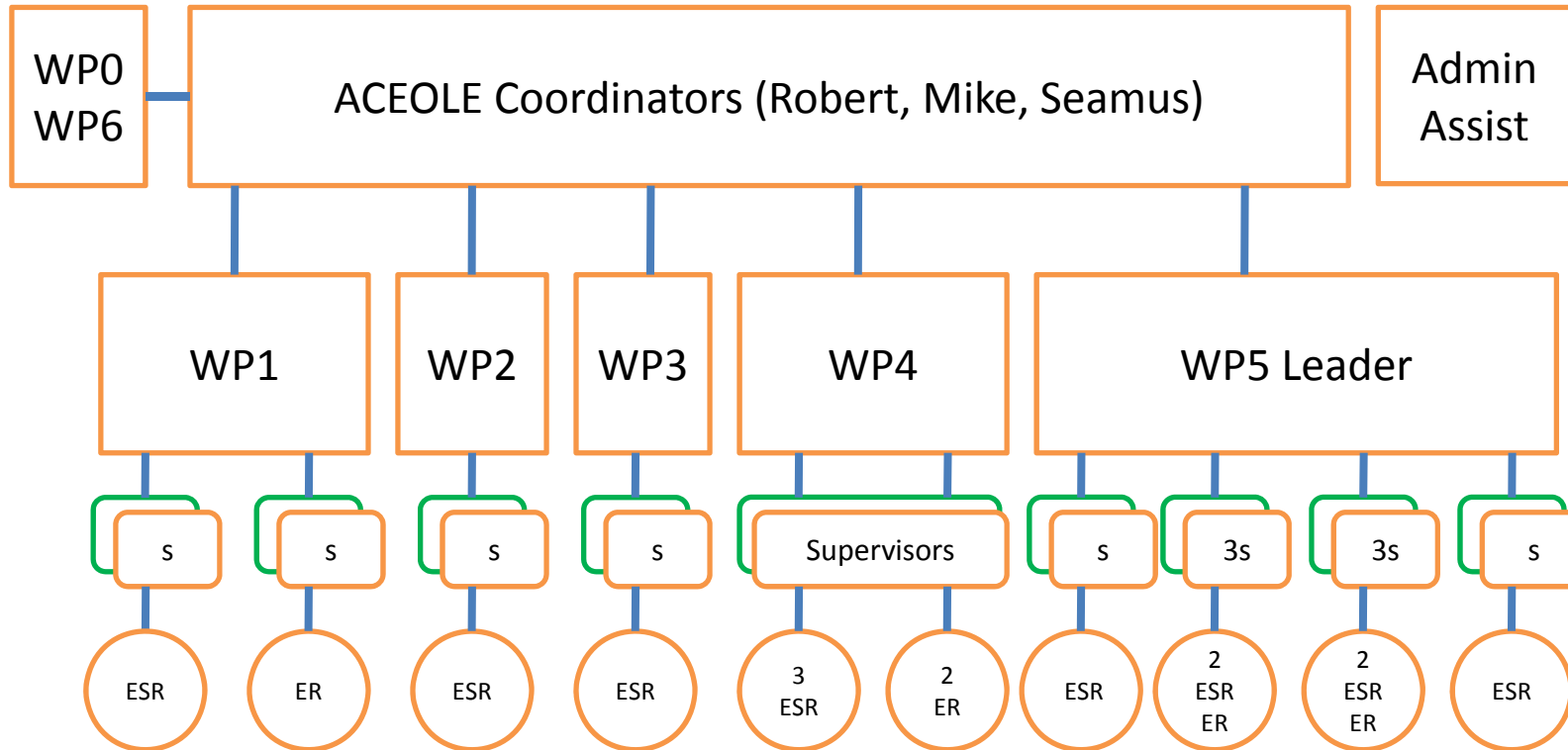
ACEOLE

Project Structure and Organisation
Robert McLaren CERN



1. People and project structure
2. Our Sharepoint site [www.cern.ch /aceole](http://www.cern.ch/aceole)

Disclaimer: this talk was produced beginning of September. Some of the screen shots are out of date. Check www.cern.ch/aceole for the latest version



Secondment

Researchers Tasks WPL Sups [Read-Only] [Compatibility Mode] - Microsoft Excel

Home Insert Page Layout Formulas Data Review View Acrobat

Clipboard Font Alignment Number Styles Cells Editing

Server Workbook To modify this workbook, click Edit Workbook. Edit Workbook

H37

	A	B	C	D	E	F	G	H	I	J	K
1	Ref	Type	Task description	W.P.	W.P. leader	CERN Supervisor	Secondment supervisor	Name of researcher	Start date	End date	Months
2	1	ESR	Pixel (interconnect)	1.1	Michael Campbell			TICK Timo	01 December 2008	30 November 2011	36
3	2	ER	Pixel (Xray)	1.2	Michael Campbell			PLACKETT Richard	01 October 2008	31 March 2010	18
4	3	ESR	ASIC blocks	2.1	Paulo Moreira	Paulo Moreira		No match found in first round			0
5	4	ESR	Power Management	3.1	Jan Kaplon			BOCHENEK Michal	01 October 2008	30 September 2011	36
6	5	ESR	Opto (PON)	4.1.1	Francois Vasey	Jan Troska		PAPADOPOULOS Spyridon	01 April 2009	31 March 2012	36
7	6	ER	Opto (PON)	4.1.2	Francois Vasey	Jan Troska		PAPAKONSTANTINOU Ioannis	01 January 2009	30 June 2009	6
8	7	ER	Opto (lasers)	4.2.1	Francois Vasey	Jan Troska		SILVA Sergio	01 October 2008	30 September 2009	12
9	8	ESR	Opto (radiation)	4.3	Francois Vasey	Jan Troska		No match found in first round			0
10	9	ESR	Opto (packaging)	4.4	Francois Vasey	Jan Troska		No match found in first round			0
11	10	ESR	DAQ ALICE	5.1	Niko Neufeld	Pierre vande Vyvre		TELESCA Adriana	01 November 2008	31 October 2011	36
12	11	ESR	DAQ ATLAS 1	5.2.1	Niko Neufeld	Giovanna Lehmann		No match found in first round			0
13	12	ESR	DAQ ATLAS 2	5.2.2	Niko Neufeld	Brian Martin		SAVU Dan	01 November 2009	31 October 2012	36
14	13	ER	DAQ ATLAS 3	5.2.3	Niko Neufeld			No match found in first round			0
15	14	ESR	DAQ CMS 1	5.3.1	Niko Neufeld	Frans Meijers		HWONG Yi Ling	01 December 2008	30 November 2011	36
16	15	ESR	DAQ CMS 2	5.3.2	Niko Neufeld			No match found in first round			0
17	16	ER	DAQ CMS 3	5.3.3	Niko Neufeld			No match found in first round			0
18	17	ESR	DAQ LHCb	5.4	Niko Neufeld			GARNIER Jean-Christophe	01 October 2008	30 September 2011	36
19	19	VS(>10 yr)	Power Management	3							
20	20	VS(>10 yr)	Opto (lasers)	4.2							
21	21	VS(>10 yr)	ASIC blocks	2							
22	22	VS(>10 yr)	DAQ (fault tolerance)								
23	23	VS(>10 yr)	Pixel (Xray)	1							
24	24	VS(>10 yr)	Opto (radiation)	4.3							
25	25	VS(>10 yr)	Opto (radiation)	4.3							
26	26	VS(>10 yr)	Opto (PON)	4.1							
27	27	VS(>10 yr)	Opto (PON)	4.1							
28	28	VS(>10 yr)	Opto (packaging)	4.4							
29	29	VS(>10 yr)	Pixel (interconnect)	1							
30											
31		Project coordinator		Admin							
32		Mike Letheren		Seamus Hegarty							
33		Robert McLaren									

Ready

Inbox - Micr... ESE seminar ... PARTNER KIC... Internal Docu... Microsoft Po... Microsoft Exc... 75% 14:16

Associated partners - secondment [Read-Only] [Compatibility Mode] - Microsoft Excel

Home Insert Page Layout Formulas Data Review View Acrobat

Clipboard Font Alignment Number Styles Cells Editing

Server Workbook To modify this workbook, click Edit Workbook. Edit Workbook

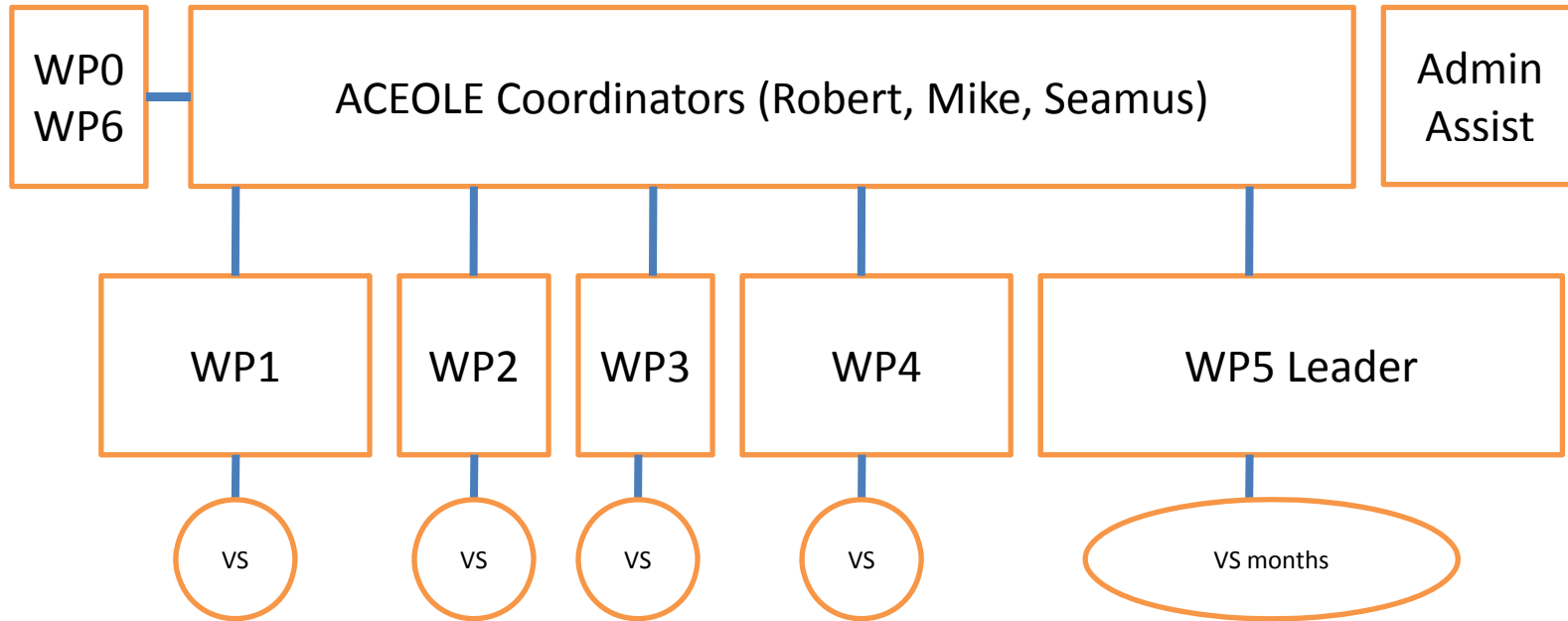
E10 Dr. Jose Machado da Silva

	A	B	C	D	E	F	G	H
1								
2	ACEOLE Associated Partners and Secondment							
3								
4	WP#	WP	WPL	Associated Partner	Contacts	Secondment	Secondment supervisor	Dates
5						months		
6	1	Pixel Detectors	Michael Campbell	PANalytical BV	Dr. Johannes Bethke	3		
7					Peter Munk			
8				VTT (Espoo)	Dr. Ilkka Suni	6		
9	2	ASIC blocks	Paulo Moreira	INESC Porto	(Dr. Henrique Salgado)	11		
10					Dr. Jose Machado da Silva			
11	3	Powering	Jan Kaplon	AGH, University of Science and Technology, Krakow	Prof. Wlodek Dabrowski	9		
12	4	Optoelectronics	Francois Vasey	UCL	Prof. Izzat Darwazeh	9		
13					Dr John Mitchell			
14				INESC Porto	Dr. Henrique Salgado	9		
15				SCK.CEN	Dr. Marco van Uffelen	9		
16				YTT (Oulu)	Prof. Pentti Karioja	4		
17	5	Data Acquisition	Niko Neufeld	Force10 Networks Inc.	Dr. Joel Goergen (chief R&D scientist)	2 x 1		
18					Michael Augustine Sales/(Appl. Eng.)	2 x 1		
19					Angela Muscat (Buss. development)	1		
20						1		
21				INFN Legnaro	Dr. Gaetano Maron			
22								
23								
24								
25								
26								
27								
28								
29								

Sheet1 Sheet2 Sheet3

Ready 100%

Internal D... Yahoo! Me... Yahoo! Me... Calendar -... Microsoft ... Microsoft ... Microsoft ... 15:18



Associated partners - visiting scientists [Read-Only] [Compatibility Mode] - Microsoft Excel

Home Insert Page Layout Formulas Data Review View Acrobat

Clipboard Font Alignment Number Styles Cells Editing

Server Workbook To modify this workbook, click Edit Workbook. Edit Workbook

G20

	A	B	C	D	E	F	G	H
1								
2	ACEOLE Associated Partners and Visiting Scientists							
3								
4	WP#	WP	WPL	Associated Partner	Contacts	Name of Scientist(s)	Months	Dates
5								
6	1	Pixel Detectors	Michael Campbell	PANalytical BV	Dr. Johannes Bethke		1	
7					Peter Munk			
8				VTT (Espoo)	Dr. Ilkka Suni		1	
9	2	ASIC blocks	Paulo Moreira	INESC Porto	Dr. Henrique Salgado		1	
10					Dr. Jose Machado da Silva			
11	3	Powering	Jan Kaplon	AGH, University of Science and Technology, Krakow	Prof. Wlodek Dabrowski		1	
12	4	Optoelectronics	Francois Vasey	UCL	Prof. Izzat Darwazeh		1	
13					Dr John Mitchell		1	
14				INESC Porto	Dr. Henrique Salgado		2	
15				SCK.CEN	Dr. Marco van Uffelen		2	
16				YTT (Oulu)	Prof. Pentti Karioja		2	
17	5	Data Acquisition	Niko Neufeld	Force10 Networks Inc.	Dr. Joel Goergen (chief R&D scientist)			
18					Michael Augustine Sales/(Appl. Eng.)			
19					Angela Muscat (Buss. development)			
20							DAQ workshops?	
21				INFN Legnaro	Dr. Gaetano Maron		3	
22								
23								
24								
25								
26								
27								
28								
29								

Sheet1 Sheet2 Sheet3

Ready 100%

Internal D... Yahoo! M... Yahoo! M... Calendar ... Microsoft ... Microsoft ... Microsoft ... 15:20

ACEOLE Organisation

Our project is organised around a Sharepoint site www.cern.ch/aceole

- All ACEOLE members have access
- Please use it, rather than email attachments, to store and share all information
- There is a good search facility !

- Parts are public (to show the world our results)
- Parts are private to all ACEOLE members
- Personal information is restricted access

Home - ACEOLE: A Marie Curie ITN Project - Windows Internet Explorer
https://espace.cern.ch/Marie-Curie-ACEOLE/default.aspx

File Edit View Favorites Tools Help

(0 unread) Yahoo! M... Home - ACEOLE: A ... Home - ACEOLE: ... Largest community o... Swisscom - Clients pr... Tools

ACEOLE: A Marie Curie ITN Project Welcome Robert McLaren | This Site

ACEOLE: A Marie Curie ITN Project

Home | ACEOLE Meetings | Work Packages | Researchers' Space Site Actions

View All Site Content

- Training events
- Related Websites
- Event Calendar

Documents

- Internal Documents

FAQs

- Public FAQs
- Internal FAQs

Sites

Pictures

- Picture Library

People and Groups

- Recycle Bin

Welcome to ACEOLE

Data Acquisition, Electronics, and Optoelectronics for LHC Experiments

The EU-funded 7th Framework ([people](#)) Programme has two main strategic objectives; to strengthen the scientific and technological base of European industry and to encourage its international competitiveness, while promoting research that supports EU policies.

The ACEOLE project is a mono-site Initial Training Network (ITN) with [CERN](#) as main host institution, working closely with associated partners. Together we will offer research training in several work package themes in the fields of advanced microelectronics, optoelectronics, networking and real-time data processing technologies in the world's state-of-the-art particle detector systems at the Large Hadron Collider (LHC), and a future upgraded Super-LHC (SLHC).

Training is high priority in the ITNs. Researchers are expected to attend conferences, workshops and follow CERN courses.

Students interested in working on this project should check out the [job opportunities](#).

Latest News

Results of first round of recruitment 01/09/2008 10:47 AM
by Robert McLaren
10 contracts have been sent out to ACEOLE reserachers. For details see Internal documents > WP0 - ITN management People Time and Money > Researchers Tasks WPL Sups

Kick Off Meeting 01/09/2008 10:08 AM
by Robert McLaren
See the second tab on the home page (on the left next to "home" for full details

Posts in ACEOLE 06/06/2008 02:12 PM
by Robert McLaren
Interested in [applying](#) for training in the ACEOLE project?

Add new announcement

Public FAQs

Subject

- I see the homepage but can't sign in
- Which browsers are recommended?
- I'm registered as a ACEOLE user, but I can only see the Public documents
- How can I access the ACEOLE site from outside CERN ??

http://espace.cern.ch/Marie-Curie-ACEOLE/default.aspx Local intranet | Protected Mode: Off 100%

Document8 - Mi... Home - ACEOLE: Yahoo! Messenger Yahoo! Messeng... Microsoft Power... 12:36

Home - ACEOLE Meetings - Windows Internet Explorer

https://espace.cern.ch/Marie-Curie-ACEOLE/meetings/default.aspx

inverse femtobarn

File Edit View Favorites Tools Help

(0 unread) Yahoo! M... Home - ACEOLE: A ... Home - ACEOLE ... Largest community o... Swisscom - Clients pr...

ACEOLE: A Marie Curie ITN Project Welcome Robert McLaren

ACEOLE Meetings

Home ACEOLE Meetings Work Packages Researchers' Space Site Actions

View All Site Content

Documents

- Shared Documents

Lists

- Archive of meetings

Discussions

Sites

People and Groups

Recycle Bin

ACEOLE: A Marie Curie ITN Project > ACEOLE Meetings

The Kick Off meeting

The one day ACEOLE Kick Off meeting at CERN will be held on Thursday the 2nd of October, starting at 09h00. The agenda can be found at <http://indico.cern.ch/conferenceDisplay.py?confId=39638>

The plan is to have a plenary session in the morning, lunch, and then hold parallel work package meetings in the afternoon.

The aim of the plenary session is to provide participants with an overview of the ACEOLE project as it is defined in the grant agreement (work packages, timescales, deliverables) and to give information on organizational/financial/administrative procedures (career development plans, secondment, visiting scientists, workshops, etc.).

In the parallel sessions the work package leaders, together with the relevant associated partners, will have the opportunity to review and update the work package objectives, timescales and deliverables, and to define training plans, secondment, visiting scientists' roles etc.

To register for the meeting, please add your name to the list of participants
<http://indico.cern.ch/conferenceDisplay.py?confId=39638> For organisational details, please contact Evelyne.Dho@cern.ch

External participants must buy their own tickets for travel which cannot be before October 1st. Reimbursement will be on the basis of tickets which must be produced on the day of the meeting – economy class air or 1st class train. Up to two hotel nights and one day of subsistence at the standard CERN rate will also be paid. For financial details please contact Katharine.Chevreux.Thomas@cern.ch

https://espace.cern.ch/Marie-Curie-ACEOLE/meetings/Shared%20Documents/Forms/AllItems.asp Local intranet | Protected Mode: Off 100%

Document8 - ... Home - ACE... fp7 kick off ... 2 Yahoo! ... Microsoft Exc... Microsoft Po... 12:30

Windows Internet Explorer browser window showing the ACEOLE: A Marie Curie ITN Project website. The address bar shows the URL: https://espace.cern.ch/Marie-Curie-ACEOLE/workpackages/_layouts/viewlists.aspx?BaseType=1. The page title is "All Site Content".

The page content includes a navigation menu with "Work Packages" highlighted in a red box. Below the navigation, the breadcrumb path is "ACEOLE: A Marie Curie ITN Project > Work Packages > All Site Content". The main heading is "All Site Content".

On the left sidebar, "Work Package Documents" is highlighted in a red box. Below it is a "Recycle Bin" link.

The main content area displays a table of "Document Libraries". The table has columns for "Name", "Description", "Items", and "Last Modified".

Name	Description	Items	Last Modified
Document Libraries			
WP1 - Pixel detector systems for Particle Tracking and Imaging		0	28 hours ago
WP2 - Radiation-hard ASIC building blocks for detector data readout		0	28 hours ago
WP3 - Power management for on-detector electronics.		0	28 hours ago
WP4 - Optical Transmission Systems for SLHC Experiments		0	28 hours ago
WP5 - Data Acquisition Systems for the LHC experiments		2	28 hours ago

An orange callout box with the text "Work Package documentation goes here" is overlaid on the table area.

The Windows taskbar at the bottom shows the system tray with the date and time: 12:31. The taskbar includes icons for Document8 - Mic..., All Site Content - ..., 2 Yahoo! Messe..., Microsoft Excel - ..., and Microsoft PowerP... The system tray also shows "Local intranet | Protected Mode: Off" and "100%" zoom level.

Home - Researchers' Space - Windows Internet Explorer


https://espace.cern.ch/Marie-Curie-ACEOLE/respace/default.aspx

inverse femtobarn

File Edit View Favorites Tools Help

(0 unread) Yahoo! M... Home - ACEOLE: A ... Home - Researche... Largest community o... Swisscom - Clients pr... Tools


ACEOLE: A Marie Curie ITN Project Welcome Robert McLaren | This Site

 **Researchers' Space**

Home ACEOLE Meetings Work Packages **Researchers' Space** Site Actions

View All Site Content
Documents
Lists
Discussions
Sites
People and Groups
Recycle Bin

ACEOLE: A Marie Curie ITN Project > Researchers' Space



Researchers' space here

Done Local intranet | Protected Mode: Off 100%

Document8 - Mi... Home - Researc... Yahoo! Messenger Yahoo! Messeng... Microsoft Power... 12:41

Internal Documents - Windows Internet Explorer

https://espace.cern.ch/Marie-Curie-ACEOLE/Shared%20Documents/Forms/AllItems.aspx

inverse femtobarn

File Edit View Favorites Tools Help

(0 unread) Yahoo! M... Home - ACEOLE: A ... Internal Documents Largest community o... Swisscom - Clients pr... Tools

ACEOLE: A Marie Curie ITN Project Welcome Robert McLaren | This List

ACEOLE: A Marie Curie ITN Project

Home ACEOLE Meetings Work Packages Researchers' Space Site Actions

ACEOLE: A Marie Curie ITN Project > Internal Documents

Internal Documents

View All Site Content

- Training events
- Related Websites
- Event Calendar
- Documents**
- Internal Documents
- FAQs
- Public FAQs
- Internal FAQs
- Sites
- Pictures
- Picture Library
- People and Groups
- Recycle Bin

New Upload Actions Settings View: All Documents

Type	Name	Modified	Modified By
Folder	Grant Negotiation Phase	19/03/2008 11:10 AM	Robert McLaren
Folder	Job descriptions	18/03/2008 10:11 AM	Robert McLaren
Folder	Meetings	16/05/2008 11:11 AM	Robert McLaren
Folder	Notes from courses	28/04/2008 03:13 PM	Robert McLaren
Folder	Plan for using and disseminating knowledge	28/04/2008 03:05 PM	Robert McLaren
Folder	Proposal phase	19/03/2008 11:11 AM	Robert McLaren
Folder	Recruitment	13/06/2008 10:59 AM	Robert McLaren
Folder	Training	16/05/2008 08:48 AM	Robert McLaren
Folder	WP0 - ITN management People Time and Money	12/08/2008 03:26 PM	Seamus Hegarty

https://espace.cern.ch/Marie-Curie-ACEOLE/Lists/Events/calendar.aspx Local intranet | Protected Mode: Off 100%

Document8 - Mic... Internal Documen... 2 Yahoo! Messe... Microsoft Excel - ... Microsoft PowerP... 12:32

Internal Documents - Windows Internet Explorer

https://espace.cern.ch/Marie-Curie-ACEOLE/Shared%20Documents/Forms/AllItems.aspx?RootFolder=%2fMarie%2dCurie%2f

ACEOLE: A Marie Curie ITN Project

ACEOLE: A Marie Curie ITN Project

Home | ACEOLE Meetings | Work Packages | Researchers' Space

ACEOLE: A Marie Curie ITN Project > Internal Documents > WP0 - ITN management People Time and Money > ESRs, ERs and VSs

Internal Documents

View All Site Content

Training events
Related Websites
Event Calendar

Documents

Internal Documents

FAQs

Public FAQs
Internal FAQs

Sites

Pictures

Picture Library

People and Groups

Recycle Bin

Type	Name	Modified	Modified By
	Adriana Telesca	01/10/2008 02:29 PM	Robert McLaren
Folder	Dan Savu	01/10/2008 02:30 PM	Robert McLaren
Folder	Ioannis Papakonstantinou	01/10/2008 02:29 PM	Robert McLaren
Folder	Jean-Christophe Garnier	01/10/2008 02:30 PM	Robert McLaren
Folder	Michal Bochenek	01/10/2008 02:27 PM	Robert McLaren
Folder	Richard Plackett	01/10/2008 02:27 PM	Robert McLaren
Folder	Sergio Silva	01/10/2008 02:29 PM	Robert McLaren
Folder	Spyridon Papadopoulos	01/10/2008 02:28 PM	Robert McLaren
Folder	Templates	15/09/2008 03:18 PM	Seamus Hegarty
Folder	Timo Tick	01/10/2008 02:26 PM	Robert McLaren
Folder	Yi Ling Hwong	01/10/2008 02:30 PM	Robert McLaren

Researcher info goes here

Local intranet | Protected Mode: Off

3 Microsoft Office ... Internal Documents - ... Microsoft PowerPoin... Microsoft Excel - Res... 14:31

Internal Documents - Windows Internet Explorer

https://espace.cern.ch/Marie-Curie-ACEOLE/Shared%20Documents/Forms/AllItems.aspx?RootFolder=%2fMarie%2dCurie%2f... Google

File Edit View Favorites Tools Help

ACEOLE: A Marie Curie ITN Project Welcome Robert McLaren

ACEOLE: A Marie Curie ITN Project

Home | ACEOLE Meetings | Work Packages | Researchers' Space | Site Actions

ACEOLE: A Marie Curie ITN Project > Internal Documents > WP0 - ITN management People Time and Money > ESRs, ERs and VSs > Templates

Internal Documents

View All Site Content | New | Upload | Actions | Settings | View: All Documents

Type	Name	Modified	Modified By
Folder	Activity Reports	03/09/2008 02:04 PM	Robert McLaren
Folder	Career Plan	03/09/2008 01:00 PM	Robert McLaren

One for each Researcher

Done Local intranet | Protected Mode: Off 100%

4 Microsoft Office ... Internal Documents - ... Microsoft Excel - Res... Microsoft PowerPoin...

Activity charts - Microsoft Excel

Home Insert Page Layout Formulas Data Review View Acrobat

Comic Sans M! 11 A A

Wrap Text

General

Conditional Formatting Format as Table Cell Styles

Insert Delete Format

Sort & Filter Find & Select

D12

Name Box A B C D E F

1 ACEOLE Activity Log 01 October 2008

2

3 Activity Date Duration Type Reference/URL

4

5 1. On the job training,

6 3. Complementary training

7 2. Formal training

8 5. Presentations, teaching, prepare

9

10

11

12

13

14

15

16

17

18

19

20

21

22

23

24

25

26

27

28

October November December Activity types

Ready

4 Microso... Internal Doc... Researchers ... Activity charts Robert - Org... Robert - Wel... 14:58