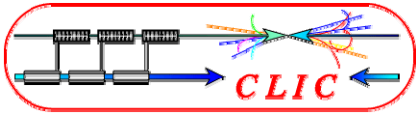


Update on CTF3 installation and planning

L. Rinolfi



Work plan for October shut-down



➤ Linac:

=> no installation or consolidation foreseen

➤ Delay Loop and Combiner Ring:

=> no installation or consolidation foreseen on the Delay Loop

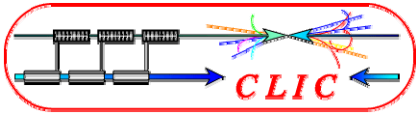
=> Several installations and hardware tests foreseen on the Combiner Ring

➤ CLEX:

=> Several installations and hardware tests foreseen on TL2, CALIFES, TBL, TBTS

➤ CTF2:

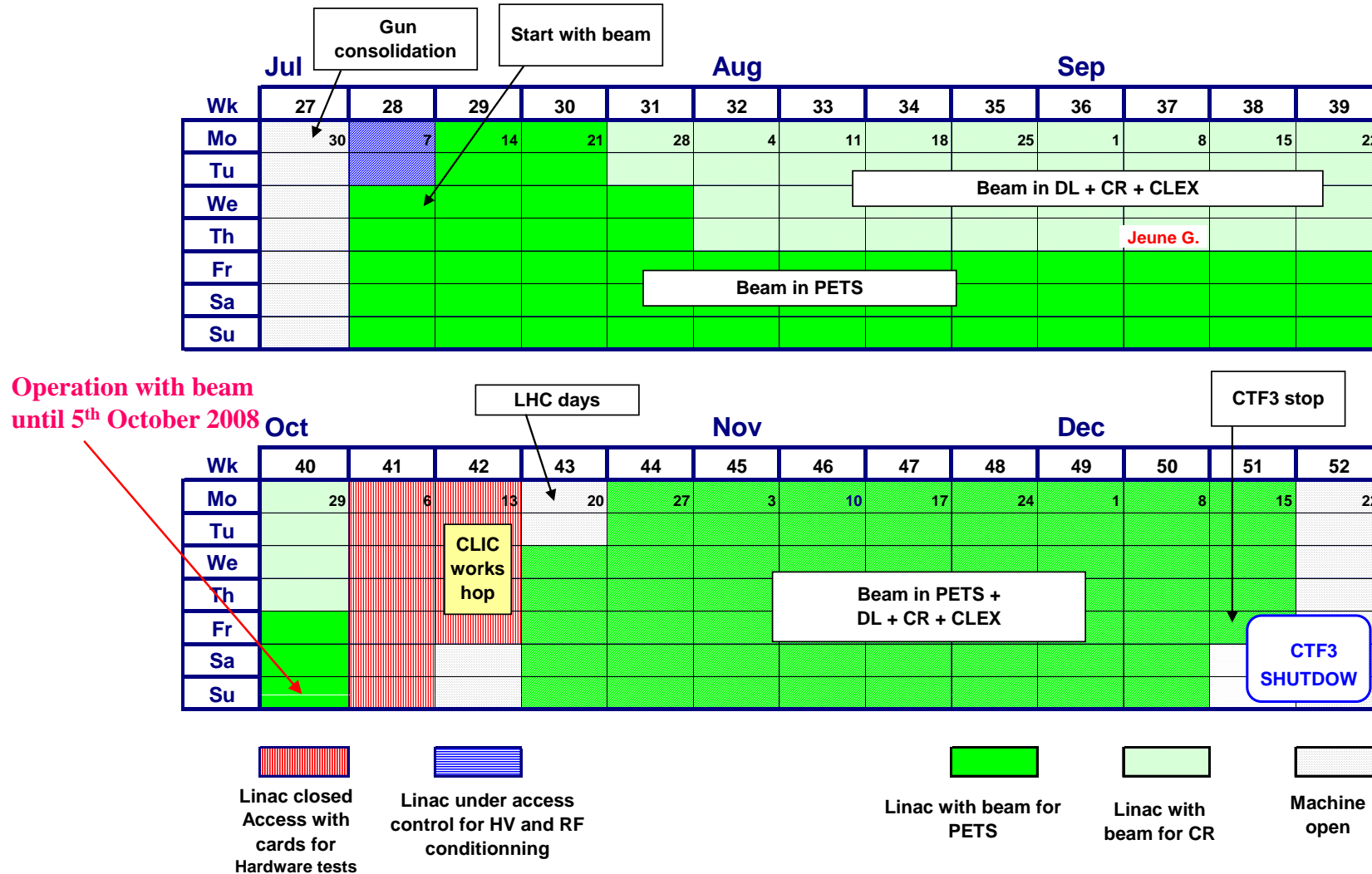
=> Installations and hardware tests foreseen for the PHIN (PHoto-INjector) line

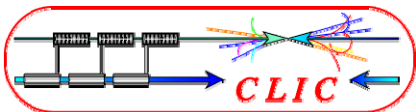


CTF3 - Linac - Schedule

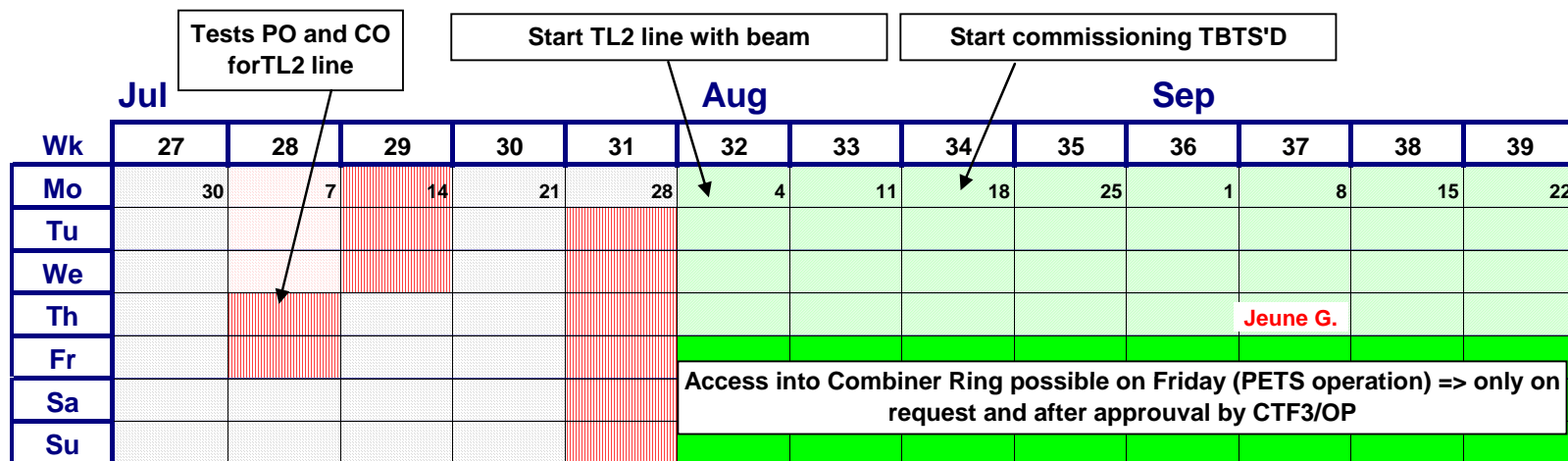
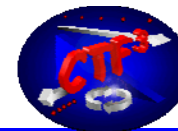


<https://edms.cern.ch/document/862088/>

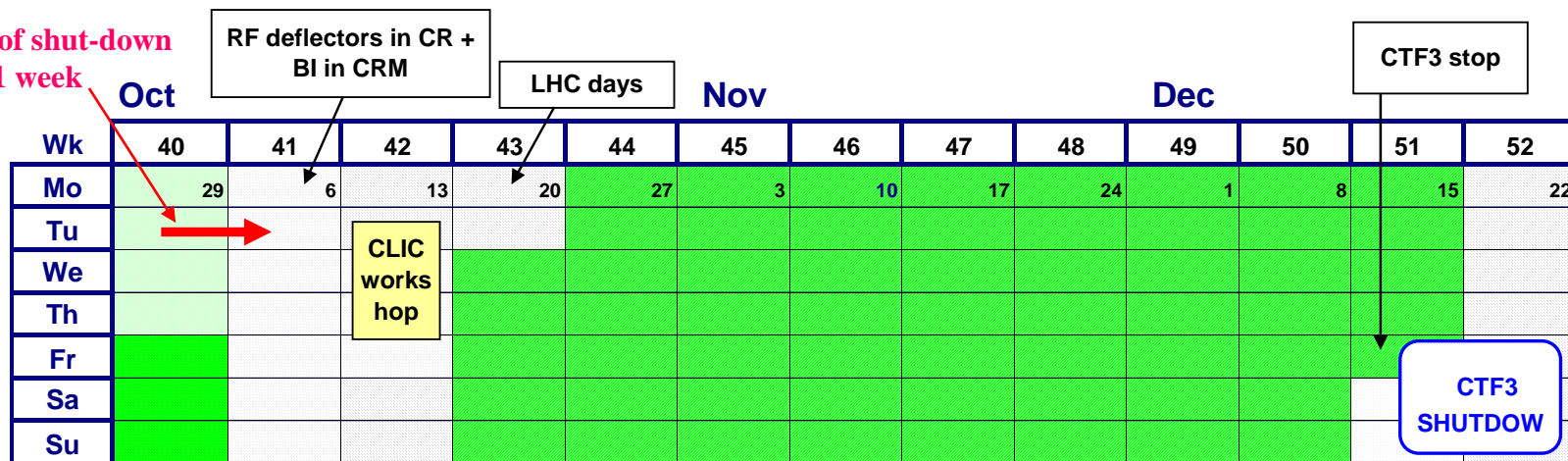




CTF3 - DL - CR - TL2 Schedule



Beginning of shut-down moved by 1 week



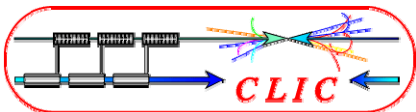
CR closed for Hardware tests

CR under access control

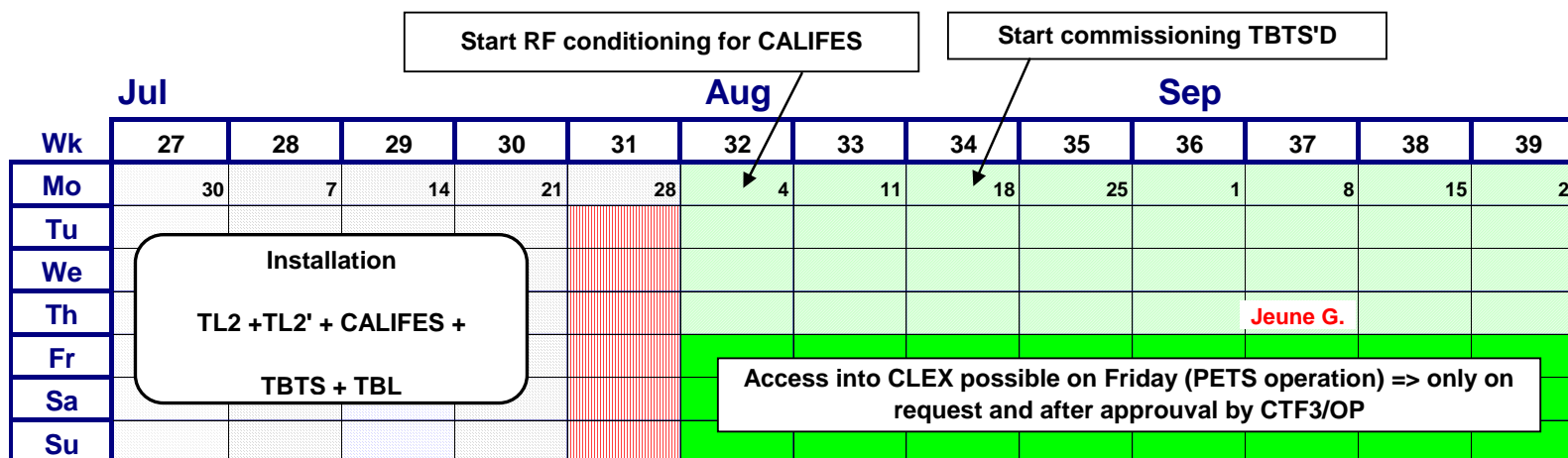
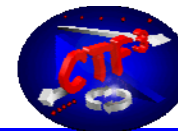
CR with beam

Beam in PETS line only

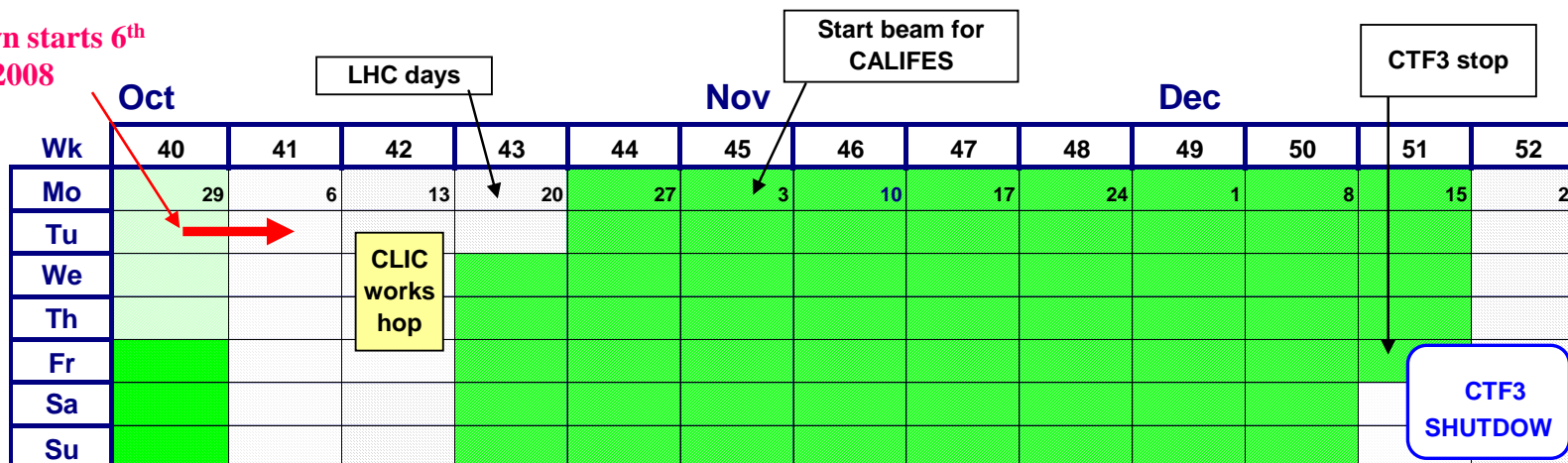
Machine open



CTF3 - CLEX Schedule 2008



Shut-down starts 6th
October 2008



CLEX closed for
Hardware tests

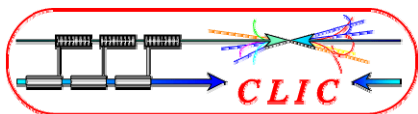
CLEX under
access control

CLEX under
access control for
Laser tests

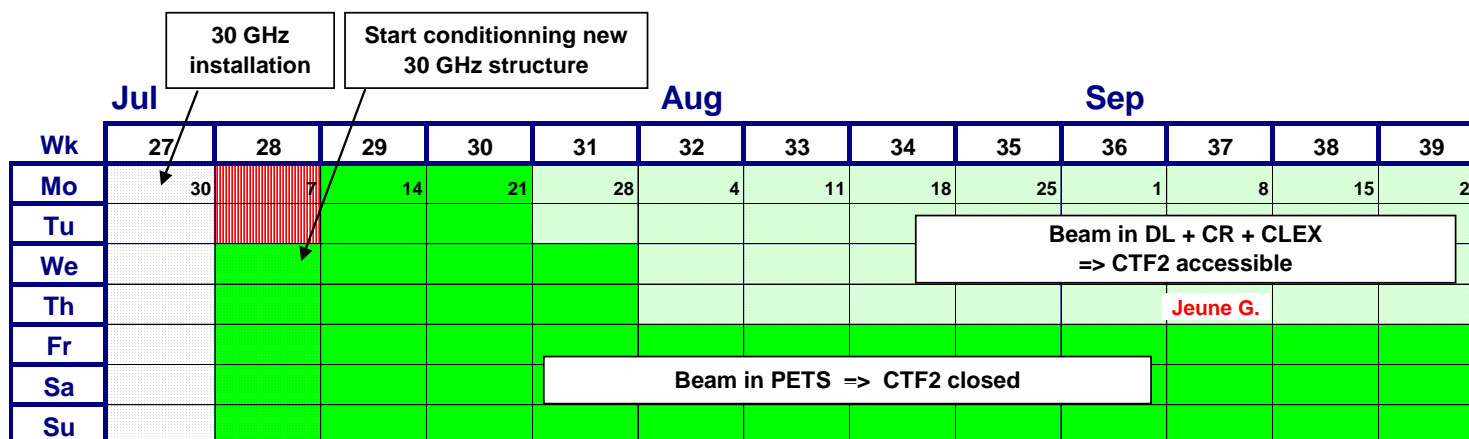
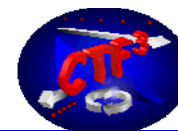
CLEX with
beam

Beam in
PETS line
only

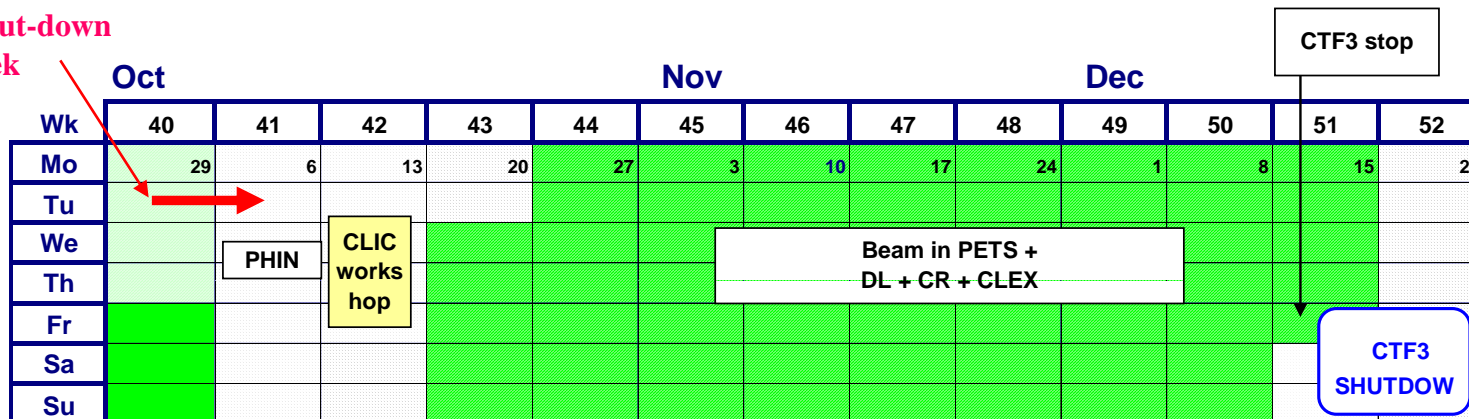
Machine
open



CTF3 - CTF2 Schedule 2008



Beginning of shut-down
moved by 1 week



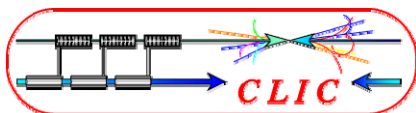
CTF2 closed for
Hardware tests

CTF2 open under
access control

CTF2 with
30 GHz or
beam

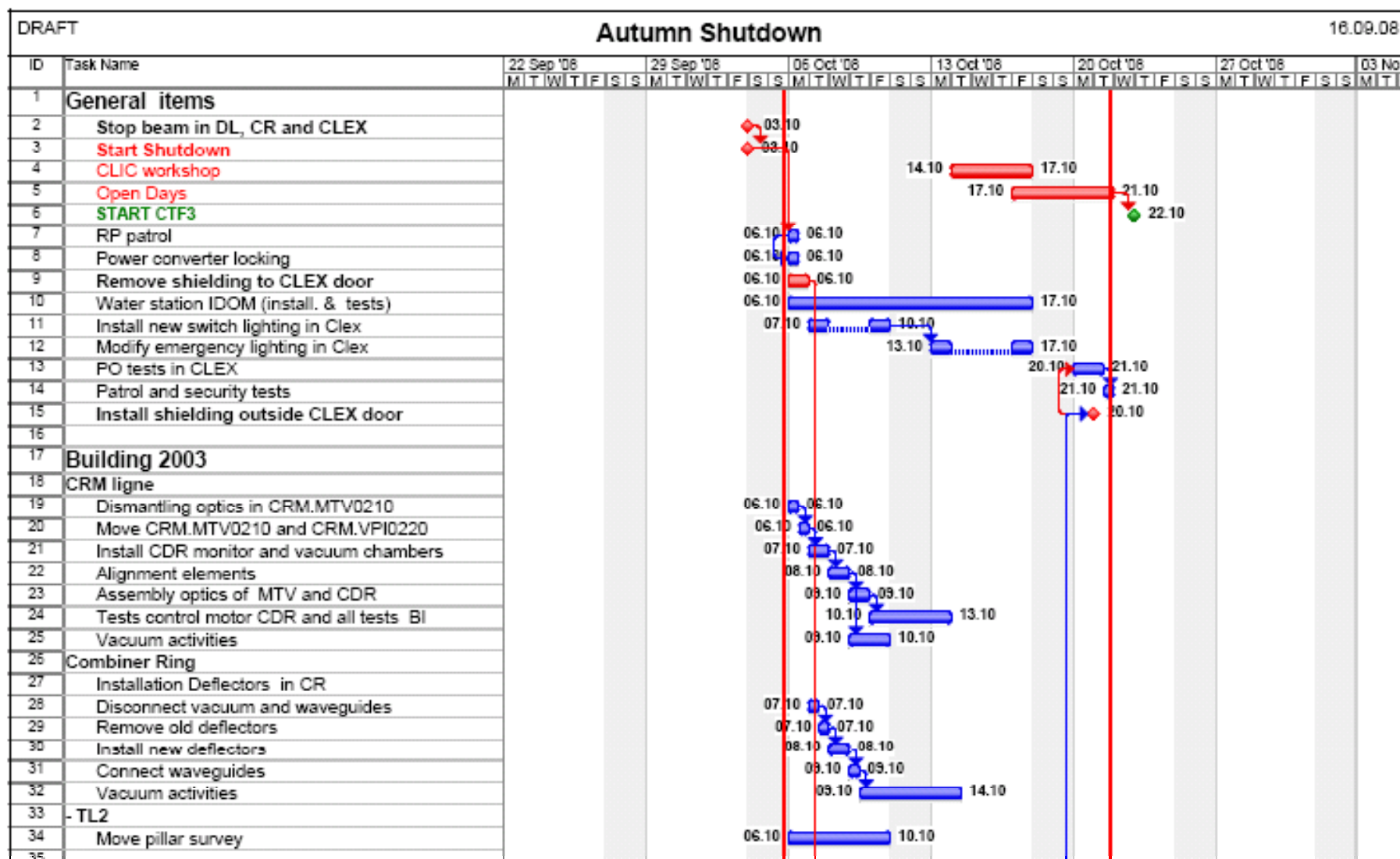
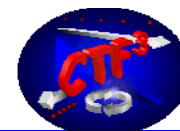
Machine
open

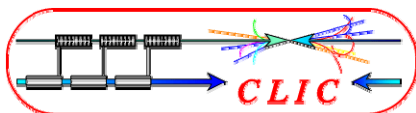
<https://edms.cern.ch/document/862088/>



Planning (Page 1)

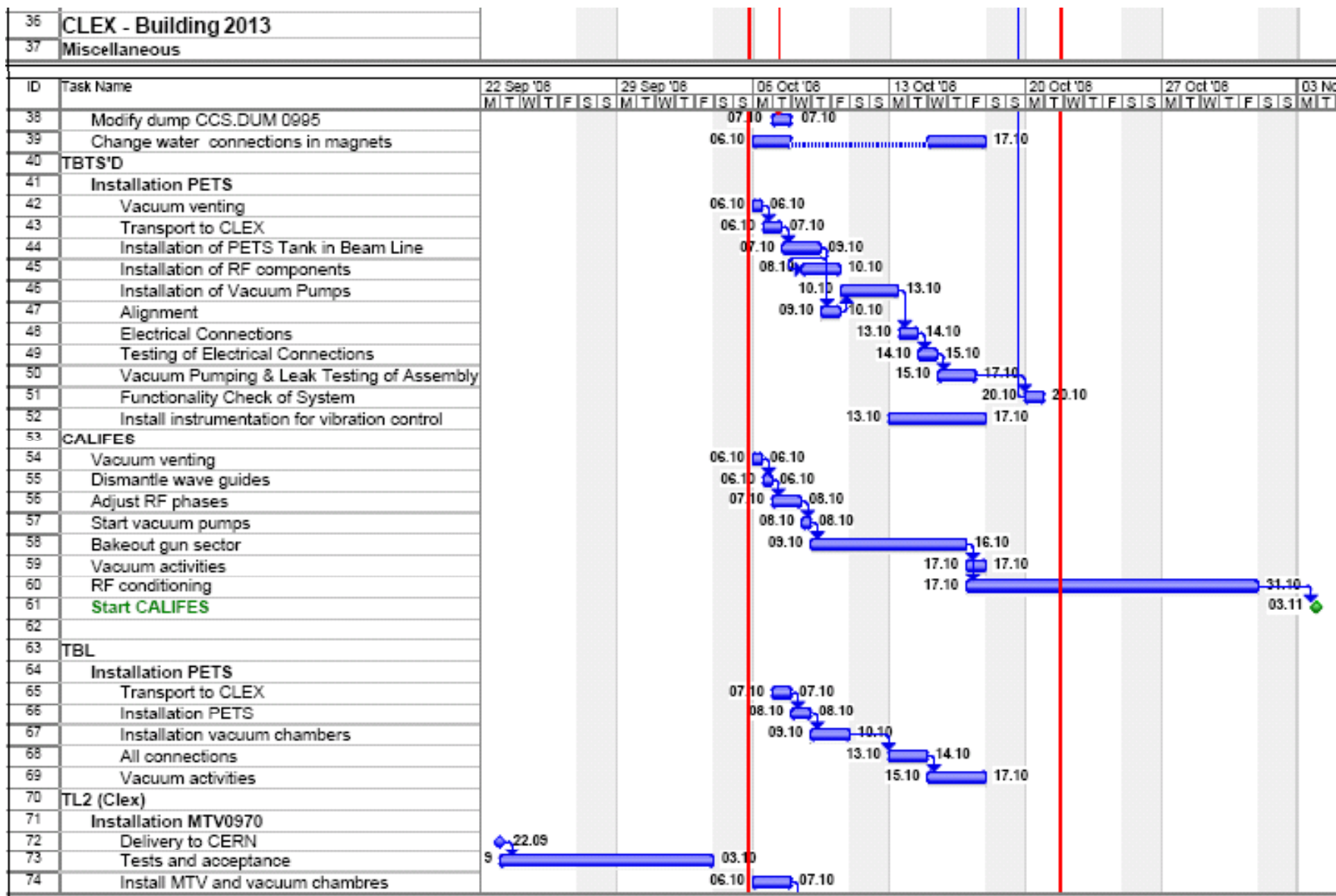
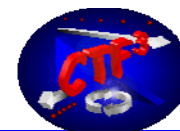
J. Monteiro

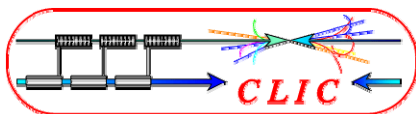




Planning (Page 2)

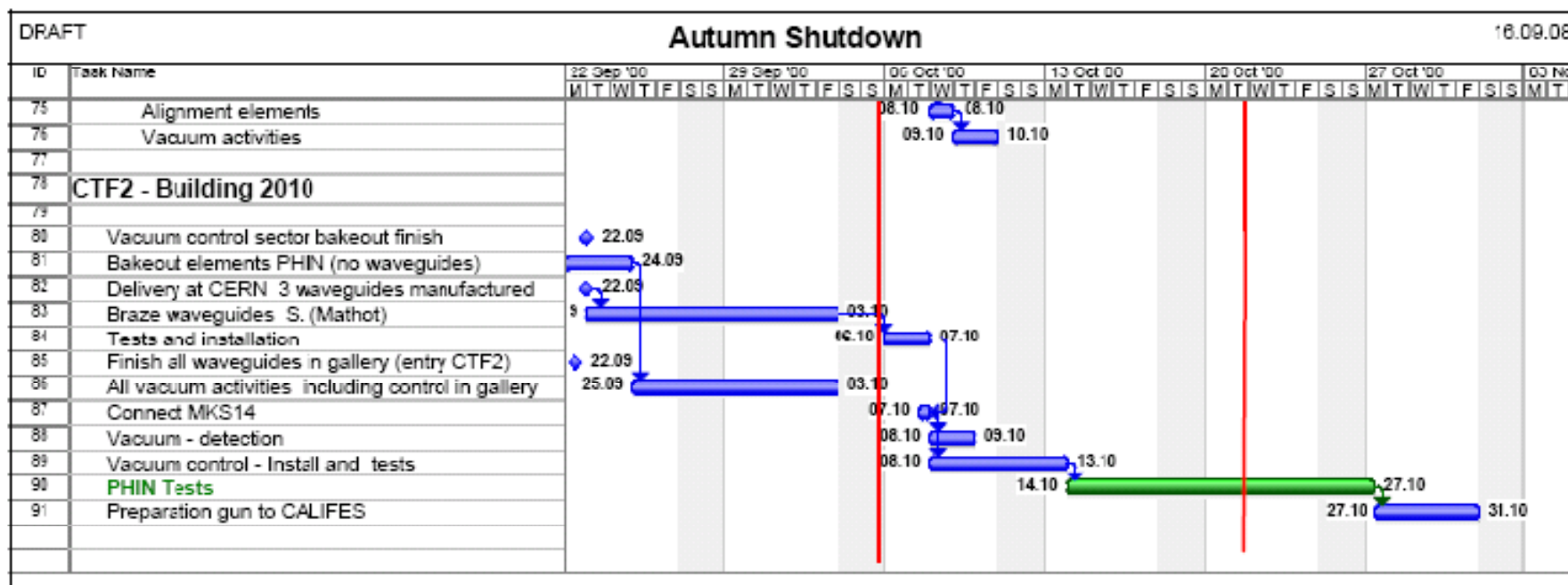
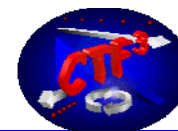
J. Monteiro

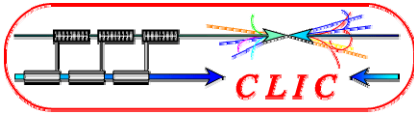




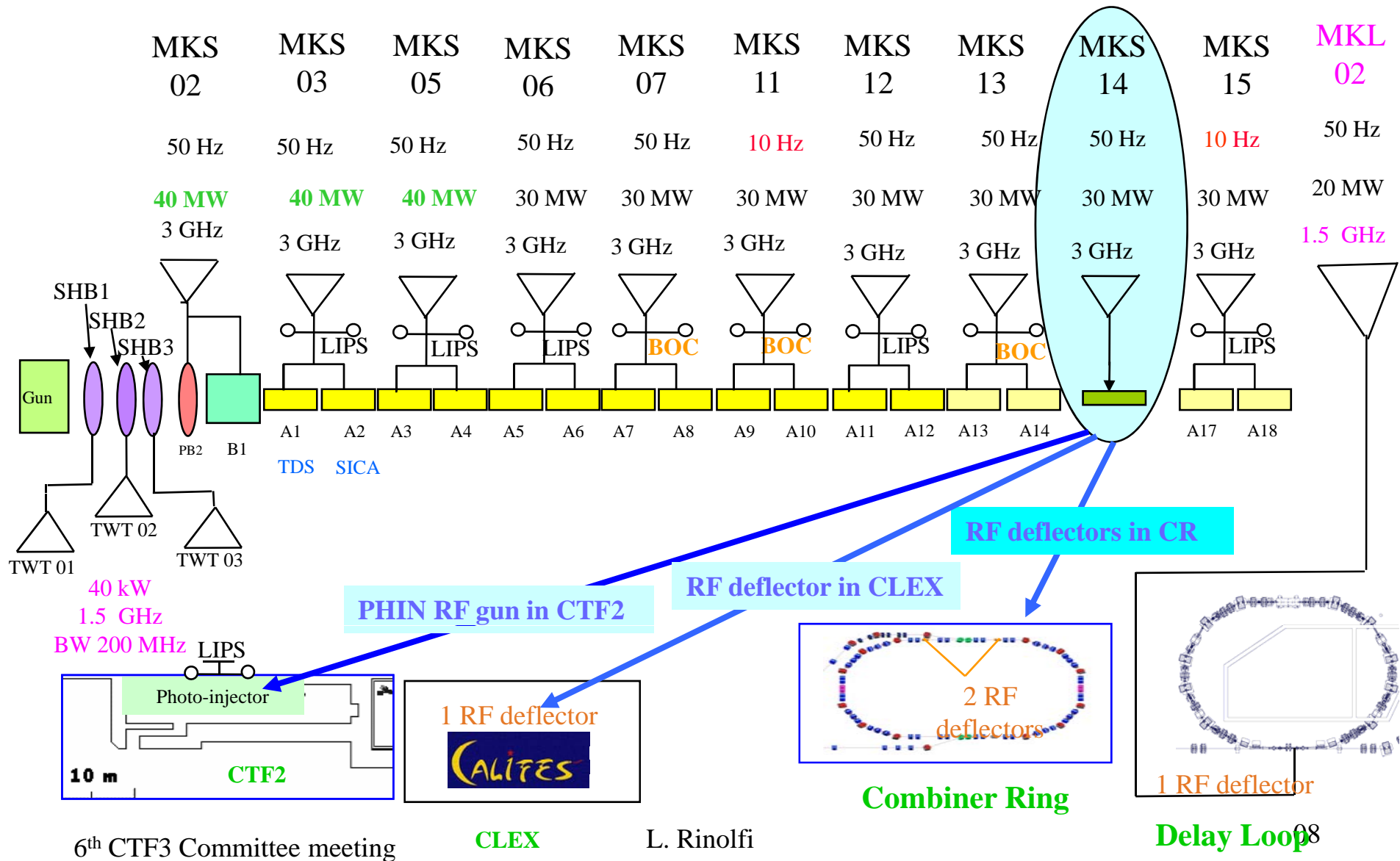
Planning (Page 3)

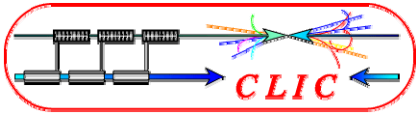
J. Monteiro





Klystrons





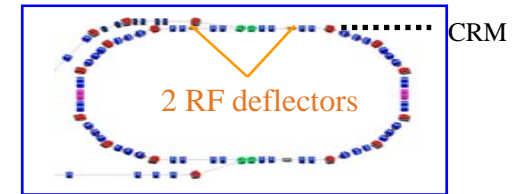
Summary



➤ Installations into the Combiner Ring:

=> CDR monitor in the CRM line (exit of the CR)

=> RF deflectors in the CR



Combiner Ring

➤ Installations into CLEX:

=> TL2 line to be completed with the MTV screen for emittance measurements

=> CALIFES finished (RF conditioning to be done + photocathode preparation)

=> TBTS installation of the PETS tank (Phase 1)

-> TBL installation of the PETS tank

➤ Installations into CTF2:

=> PHIN line to be completed with RF wave guides (RF conditioning remains to be done + laser beam to be transported + photocathode preparation)

=> **PHIN tests foreseen from October 2008**