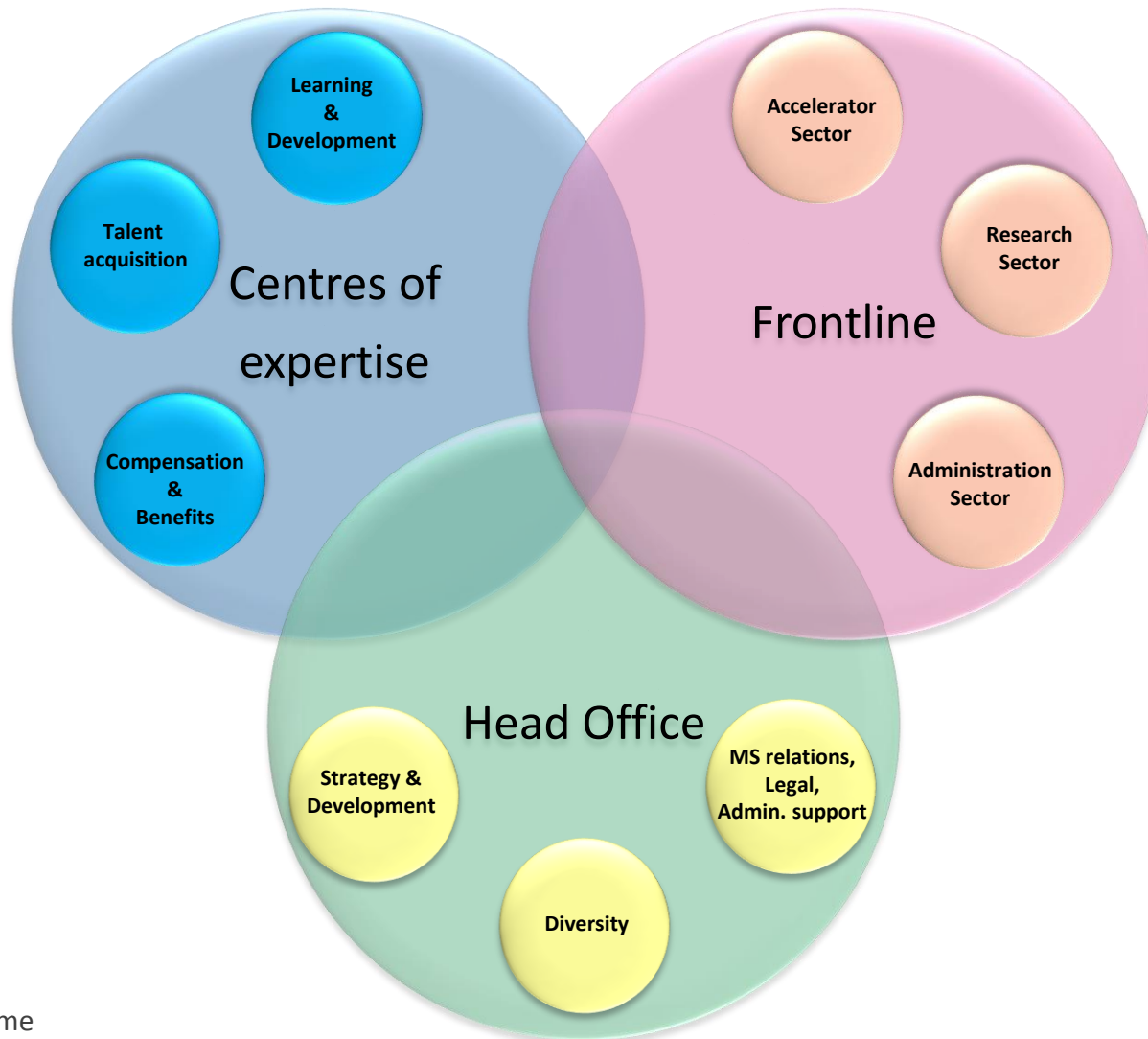




# Induction Interview & Probation Period

## Entretien d'entrée en fonctions et période probatoire

# HR Department Structure



# HR key contacts for Fellows



**Katerina JANAQI**  
71816



**Katharine THOMAS-CHEVREUX**  
Fellowship programme coordinator  
74471



**Géraldine BALLE**  
74151

# HR key contacts for Staff : Frontline (HRA)

Human Resources Advisors



**Marie-Laure RIVIER**  
Group Leader Frontline  
79866 - 168946

RESEARCH



**Donia GRANDCLAUDE**  
assistant for the  
Research sector



**Michel GUYE-BERGERET**  
HRA for PH  
72045 - 169429



**Lore TAILLIEU**  
HRA for IT  
62644 - 168558



**Marie-Luce FALIPOU**  
Deputy Group Leader  
74701 - 161210

ACCELERATORS



**Sebastian BOTT**  
assistant for the  
Accelerator sector



**Florence LICCI-DUNNOUGH**  
HRA for EN  
79189 - 161306



**Donna AVY CARMONA**  
HRA for BE  
62998 - 161736



**Isabel PUMARES ARGÜELLES**  
HRA for TE  
62954 - 167030



**Estela PAJOT**  
administrative  
assistant - CERN projects

ADMINISTRATION



**Emeline DOLMAZON**  
assistant for the  
Administration sector



**Christille DE POIX**  
HRA for GS  
63335 - 167510



**Aurélie FAVRE-CHOY**  
HRA for HR  
79344

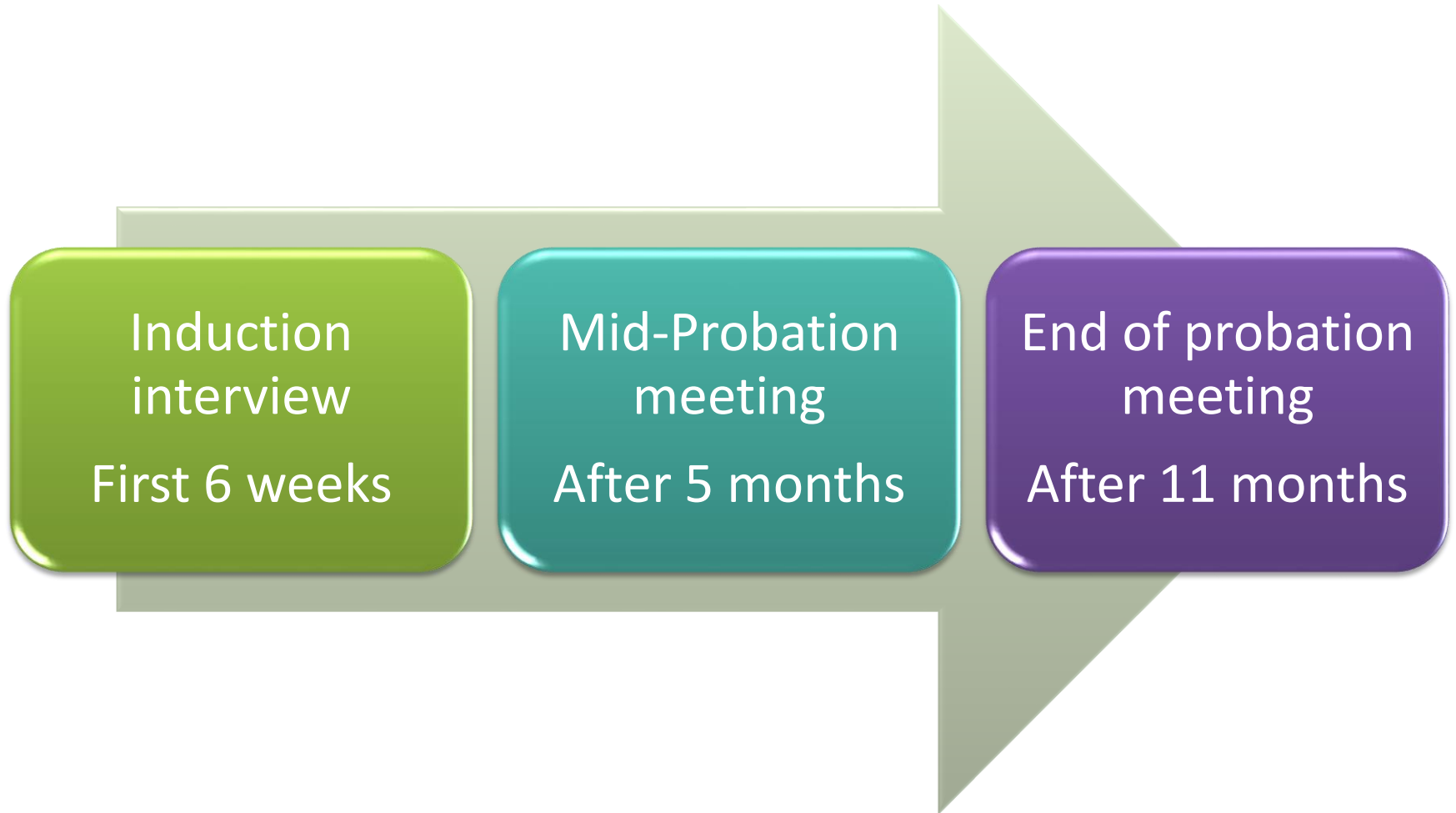


**Roland BAUMANN**  
HRA for DG, DGS, PF  
62920 - 163405



**Florence LICCI-DUNNOUGH**  
HRA for FP  
79189 - 161306

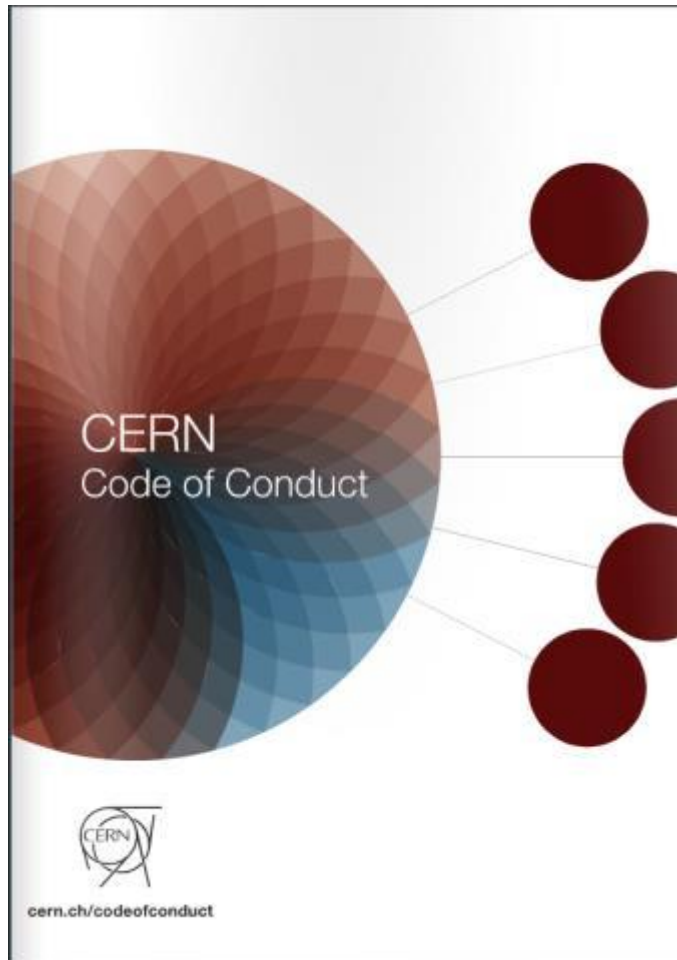
# The probation period (1 year)



# CERN Values



# Code of Conduct



[cern.ch/codeofconduct](https://cern.ch/codeofconduct)

# CERN Competency Model



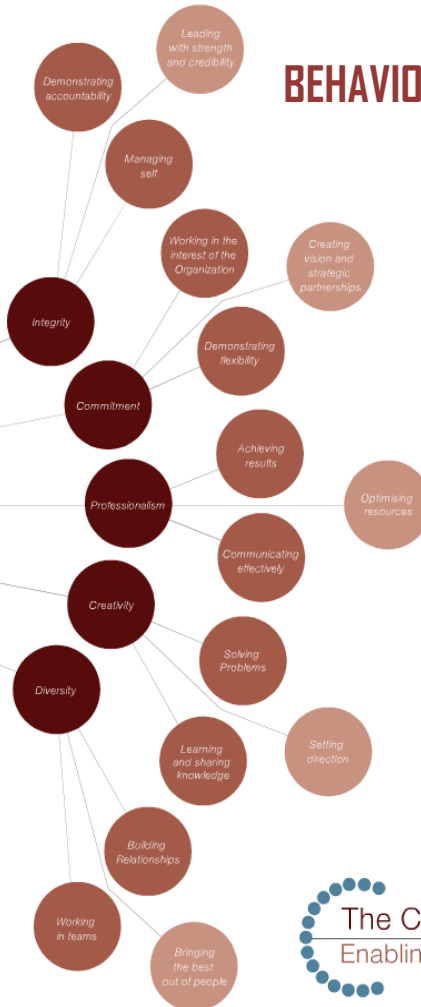


# CERN Competency Model

## TECHNICAL COMPETENCIES



## BEHAVIOURAL COMPETENCIES



[cern.ch/ccm](http://cern.ch/ccm)

The CERN Competency Model  
Enabling excellence through balance

# Reminder & Conclusion

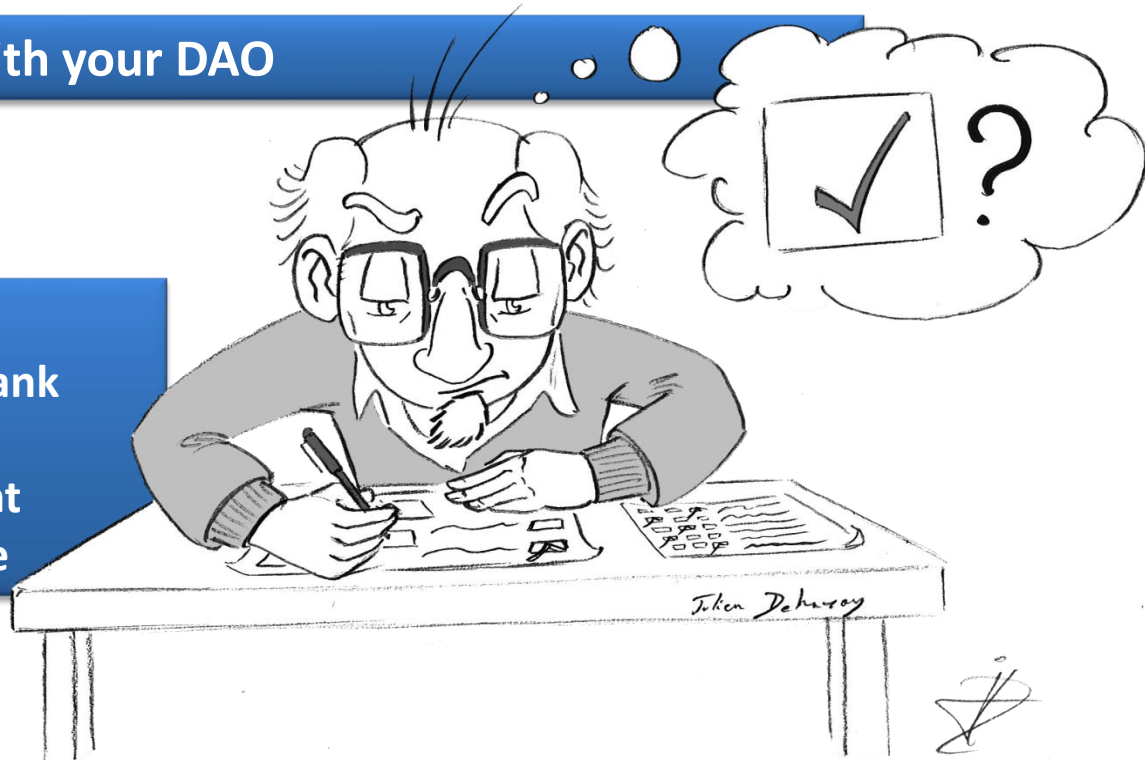


# Before leaving this session...

From 1.30 p.m.: Meet with your DAO

## Arrival formalities:

- Access card, Car sticker, bank account ...
- If applicable : appointment with the Installation service



Quarterly session – 27 November 2015