

Weekly Report

Yanchu Wang

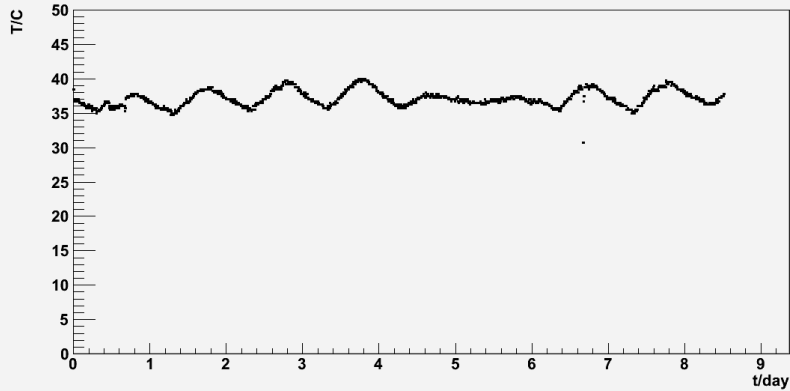
System logger

- Have been monitoring system since 08/19, so right now we are having our 9th day's data
- Daily plots and summaries are made and posted on:

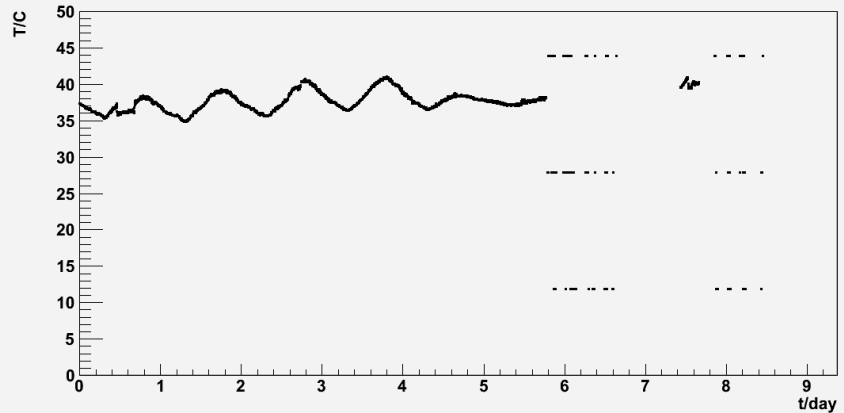
<http://cern.ch/yanchu/>

Temperature Monitoring

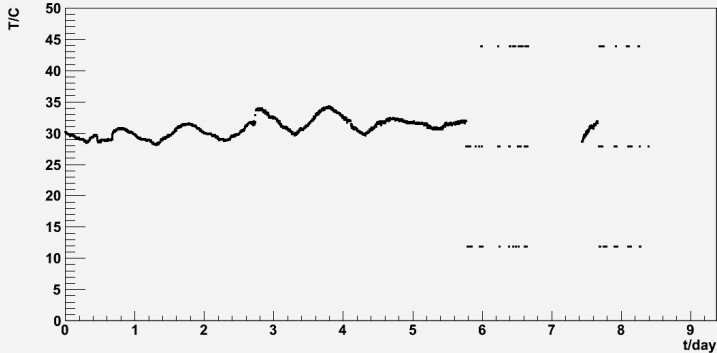
adc58_f T vs t



1wA_f T vs t

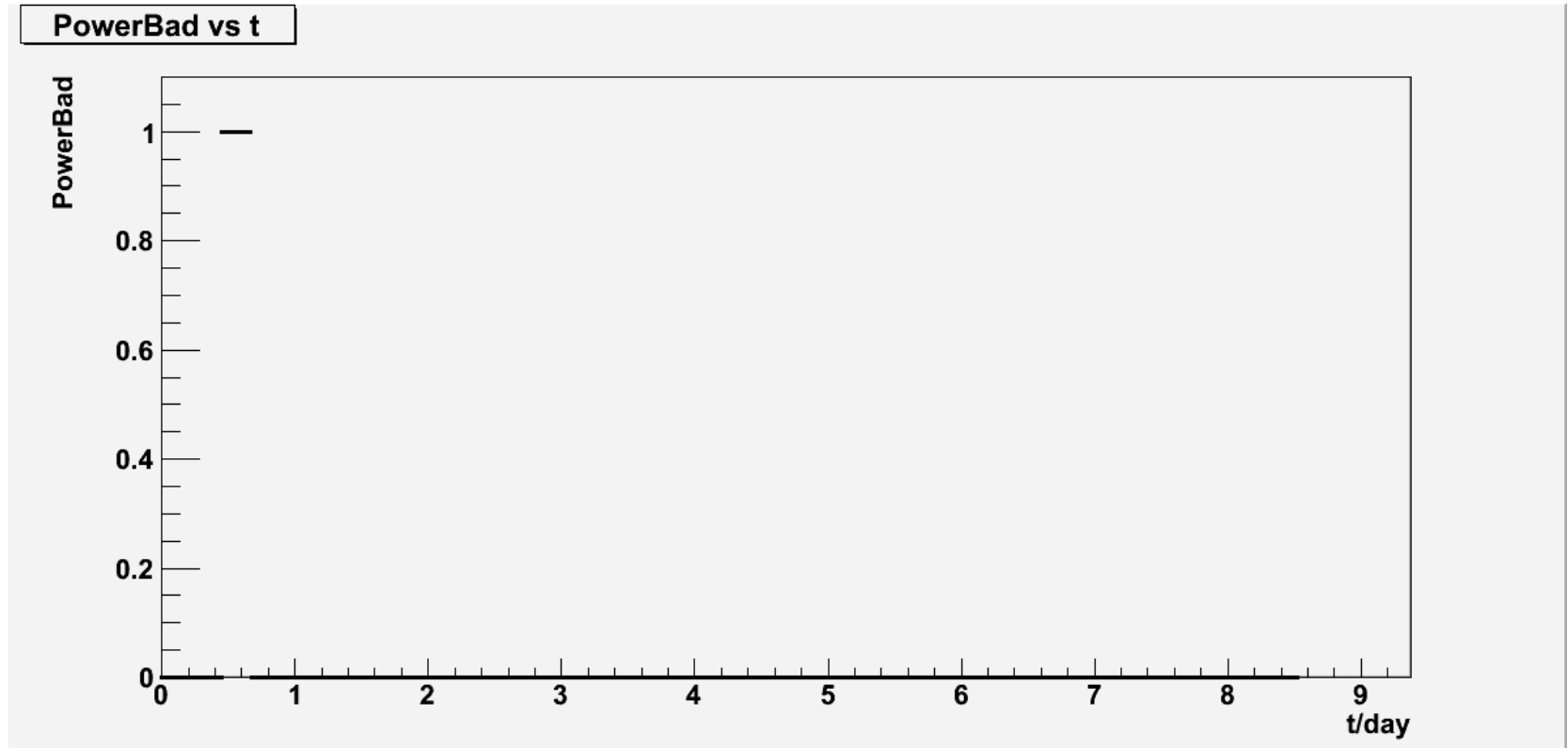


1wB_f T vs t

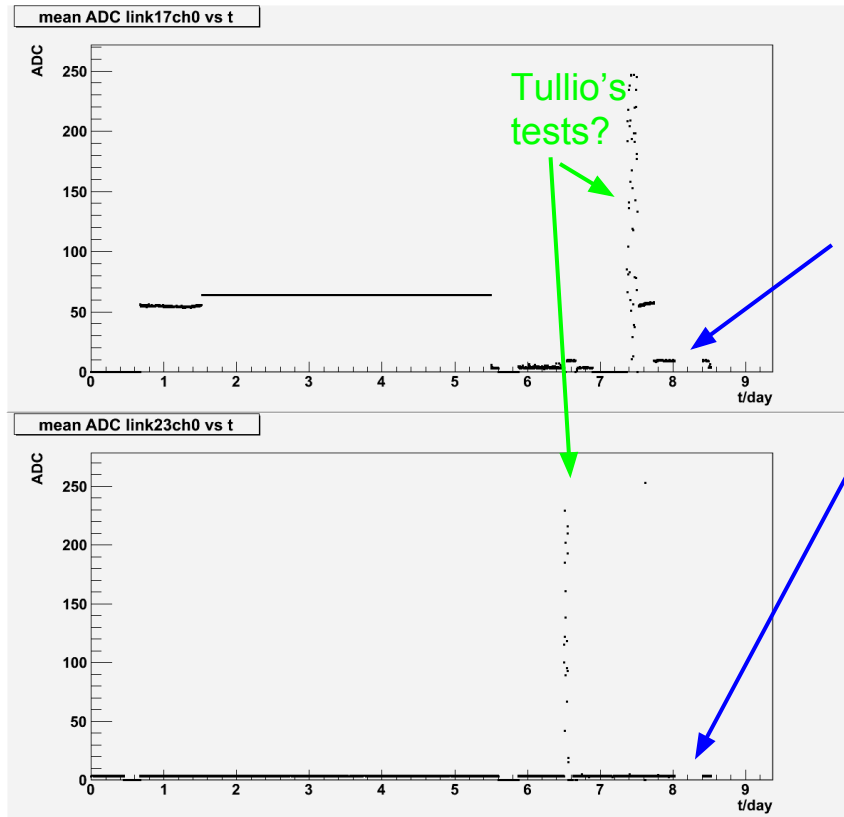


There are some problem with the 1wA/B_f registers on ngccm since Aug 24

PowerBad monitoring

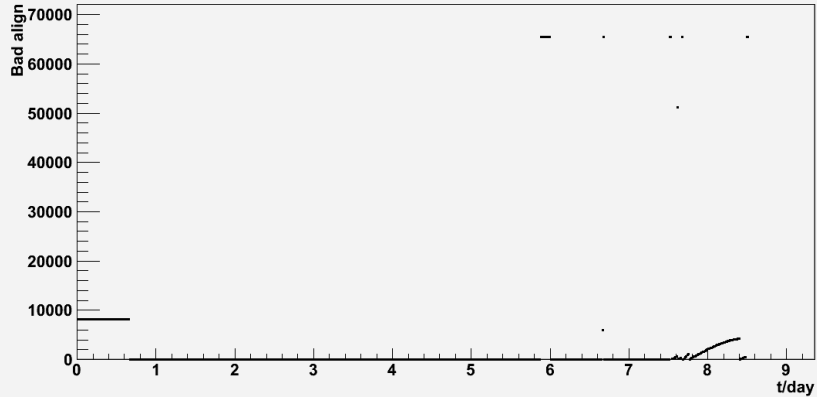


mean ADC monitoring

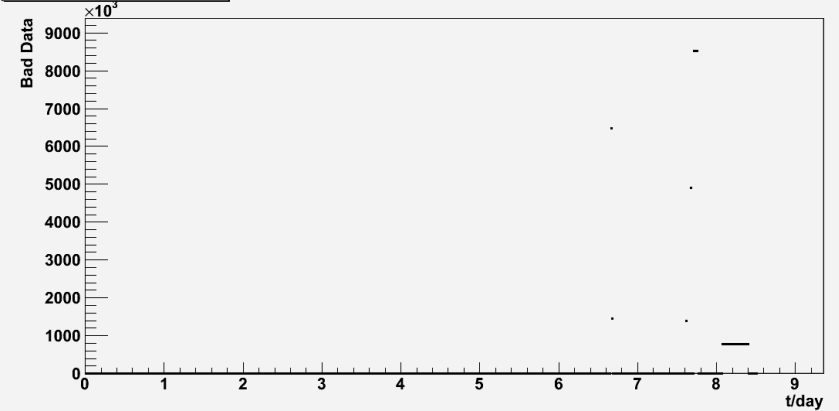


Bad align & Bad Data monitoring

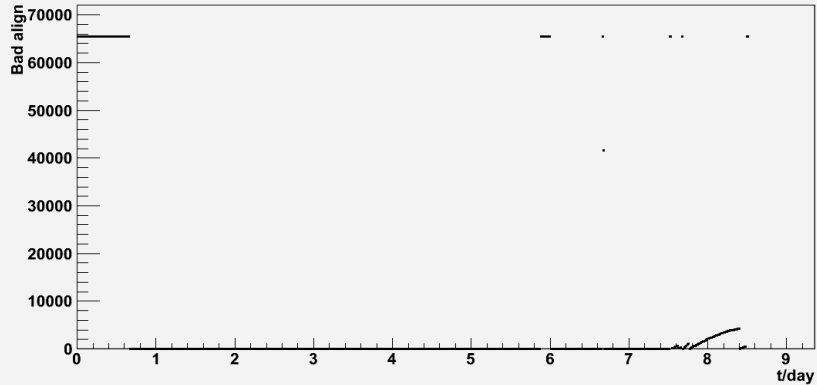
Bad align link_17 vs t



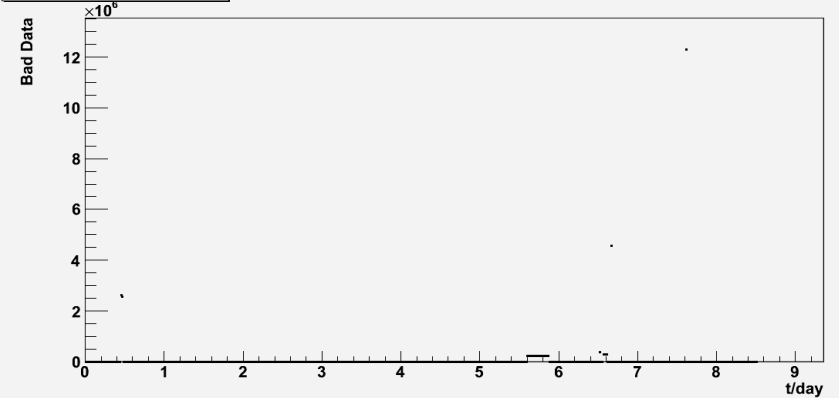
Bad Data link_17 vs t



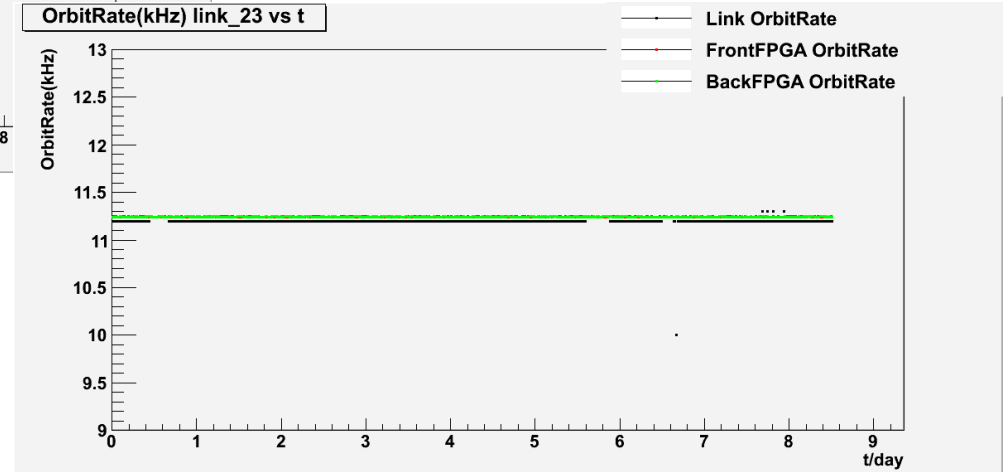
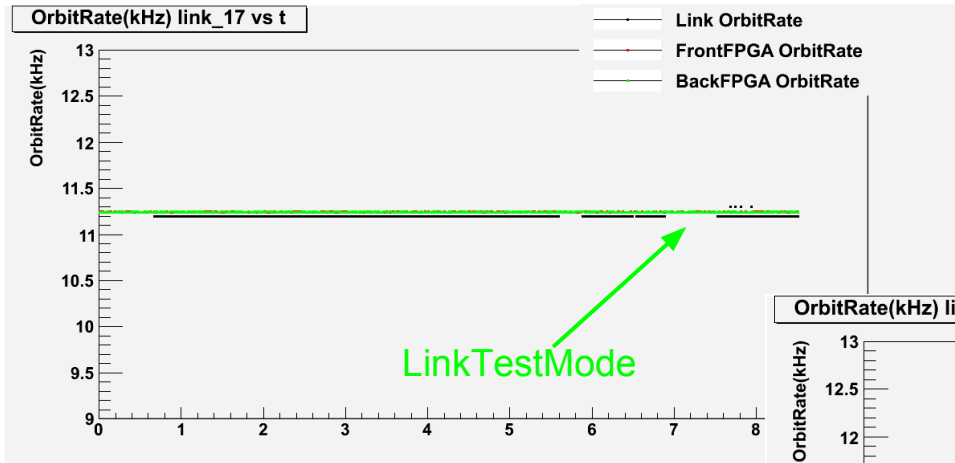
Bad align link_23 vs t



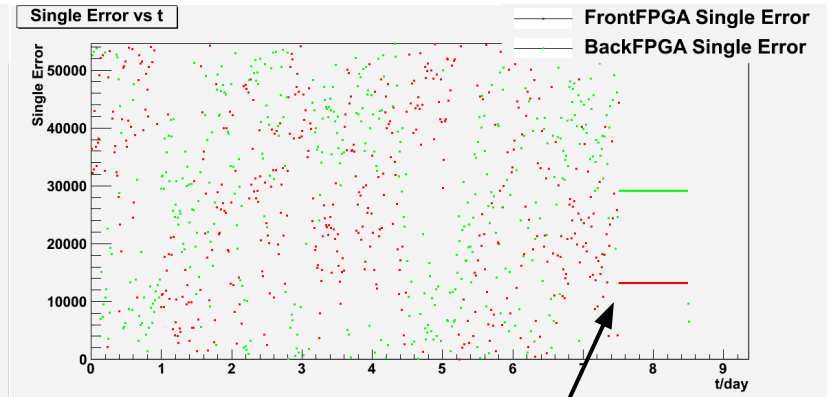
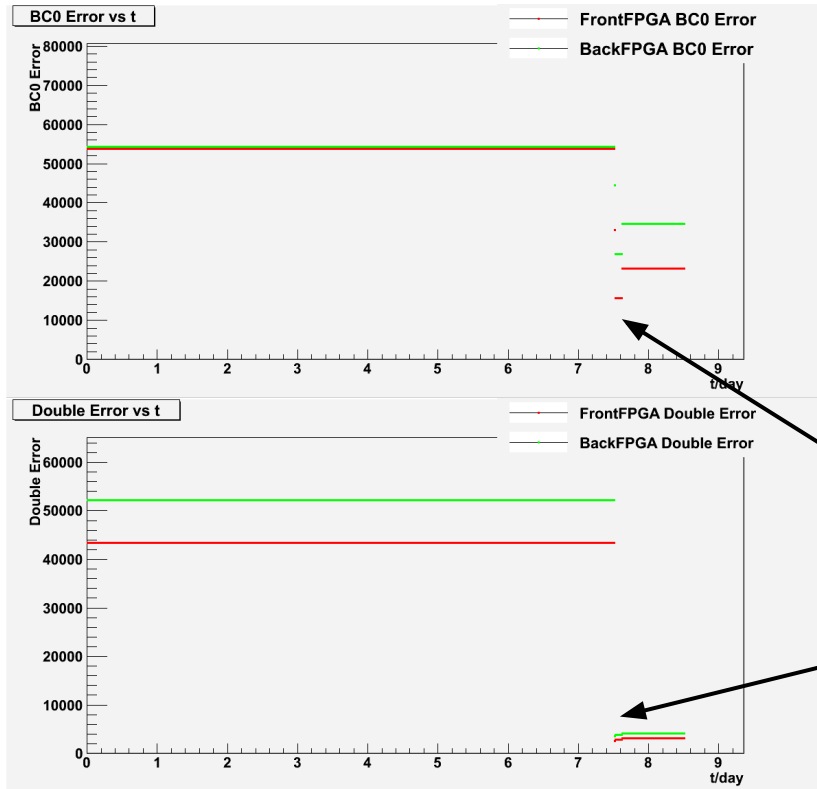
Bad Data link_23 vs t



OrbitRate monitoring

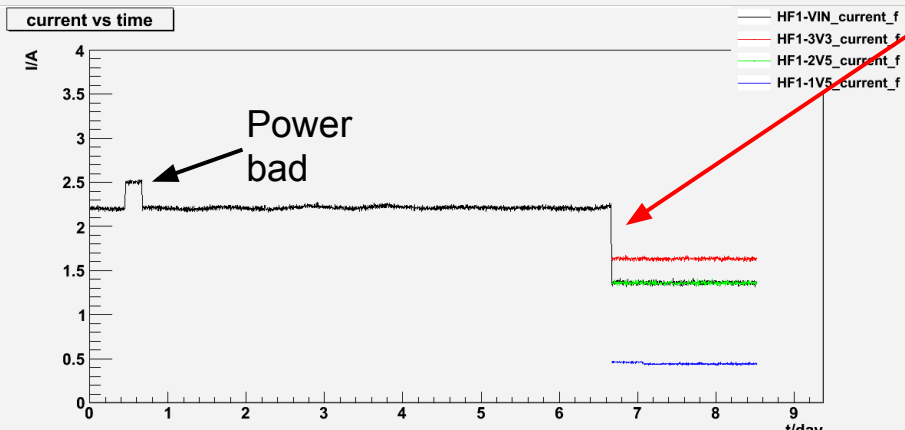
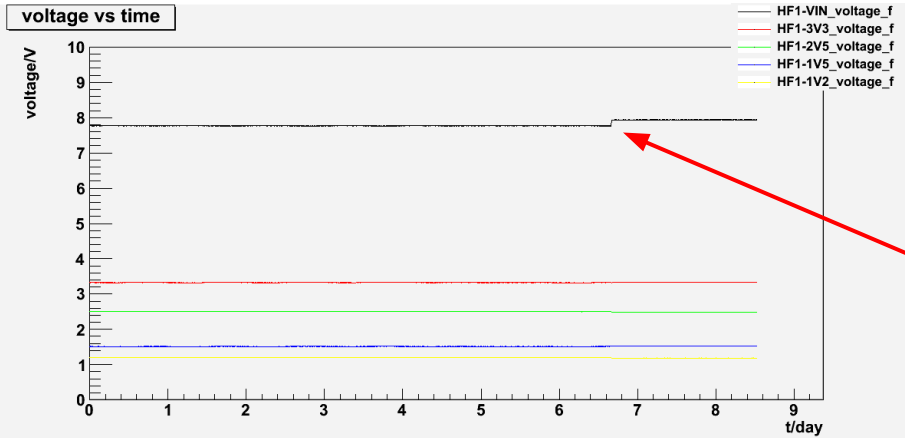


Error Data information monitoring



Some change
happened yesterday

Power information monitoring



ngccm
changed