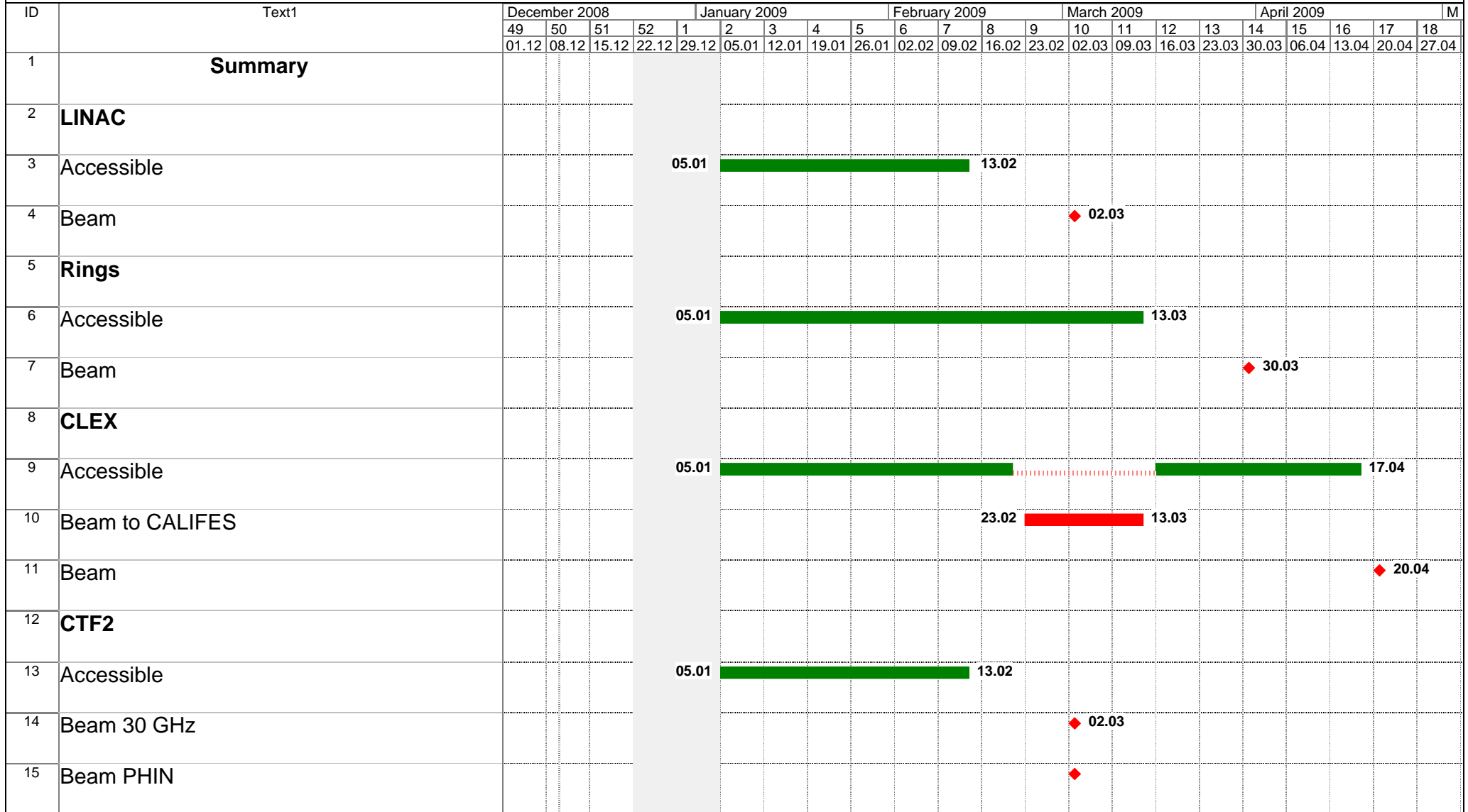


CTF3 - Shutdown 2008-2009

10.12.08



CTF3 - Shutdown 2008-2009

10.12.08

ID	Text1	December 2008				January 2009					February 2009				March 2009				April 2009				M	
		49	50	51	52	1	2	3	4	5	6	7	8	9	10	11	12	13	14	15	16	17		18
		01.12	08.12	15.12	22.12	29.12	05.01	12.01	19.01	26.01	02.02	09.02	16.02	23.02	02.03	09.03	16.03	23.03	30.03	06.04	13.04	20.04		27.04
16	Detailed																							
17																								
18	CTF3 Stop		◆ 12.12																					
19	RP Inspection			◆ 15.12																				
20	Magnets Inspection		15.12	□ 17.12																				
21	Transfert CCC to CSA (Linac)			◆ 15.12																				
22	Stop demineralized water		18.12	▤																				
23	Accès closed (maintenance door 621)													◆ 09.02										
24	Maintenance door D601(CR, DL)													◆ 10.02										
25	Maintenance door D631(CLEX)													◆ 11.02										
26	Maintenance door D611(CTF2)													◆ 12.02										
27	Test security chain 1st.																				□ 30.03	□ 31.03		
28	Test security chain 2nd.																				□ 23.03	□ 24.03		
29	Test security chain 3th.																					□ 08.04	□ 09.04	
30	Transfert CSA to CCC													◆ 23.02										
31	Separation & protection electricity distribution			◆ 18.12																				
32	Cleaning Ring																							
33	Cleaning CLEX																							
34																								
35	Modulator Maintenance																							

CTF3 - Shutdown 2008-2009

ID	Text1	December 2008												January 2009				February 2009					March 2009				April 2009			M
		49	50	51	52	1	2	3	4	5	6	7	8	9	10	11	12	13	14	15	16	17	18							
		01.12	08.12	15.12	22.12	29.12	05.01	12.01	19.01	26.01	02.02	09.02	16.02	23.02	02.03	09.03	16.03	23.03	30.03	06.04	13.04	20.04	27.04							
36	MKS14 - CR-Phin-Califes					05.01			09.01																					
37	MKS02 - Linac							12.01		16.01																				
38	MKS03 - Linac								19.01			23.01																		
39	MKS05 - Linac									26.01			30.01																	
40	MKS06 - Linac										02.02		06.02																	
41	MKS07 - Linac											09.02		13.02																
42	MKS11 - CR-DL(security chain)												16.02		20.02															
43	MKS12 - CR-DL(security chain)													23.02		27.02														
44	MKS13 - CR-DL(security chain)														02.03		06.03													
45	MKS15 - CR-DL(security chain)															09.03		13.03												
46	MKL02 - CR																16.03		20.03											
47	MKS in Diode mode																													
48	14,02,03,05,06,07,11,																													
49	12																													
50	13																													
51	15																													
52	MKL02																													
53																														
54	LINAC																													
55	No access (maintenance door 621)																													

CTF3 - Shutdown 2008-2009

10.12.08

ID	Text1	December 2008				January 2009					February 2009					March 2009				April 2009				M	
		49	50	51	52	1	2	3	4	5	6	7	8	9	10	11	12	13	14	15	16	17	18		
		01.12	08.12	15.12	22.12	29.12	05.01	12.01	19.01	26.01	02.02	09.02	16.02	23.02	02.03	09.03	16.03	23.03	30.03	06.04	13.04	20.04	27.04		
76	Moving girder to install shielding					05.01	06.01																		
77	Refitting cables support					05.01	09.01																		
78	Installing shielding along wall					12.01	12.01																		
79	Installing collimator girder					13.01	13.01																		
80	Install shielding upstream/downstream of collimator girder					13.01	15.01																		
81	Install collimator & vacuum elements					15.01	23.01																		
82	Connect water and air					16.01	17.01																		
83	Install 3 pillar (support pumps) upstream					19.01	20.01																		
84	Collimator alignment					21.01	21.01																		
85	Cabling pumps & vacuum tests					19.01	21.01																		
86	Connect vacuum and leak tests					26.01	30.01																		
87	Bakin-out set up					02.02	04.02																		
88	Bakin-out					05.02	10.02																		
89	Install shielding roof					11.02	13.02																		
90	All system test (AB-ATB)					16.02	04.03																		
91	Install. Mobile shielding					05.03	06.03																		
92	Kicker																								
93	Define kicker position					12.01	12.01																		
94	Install 2 girder support					12.01	13.01																		
95	Survey kicker					13.01	13.01																		

CTF3 - Shutdown 2008-2009

10.12.08

ID	Text1	December 2008					January 2009					February 2009					March 2009					April 2009					M				
		49	50	51	52	1	2	3	4	5	6	7	8	9	10	11	12	13	14	15	16	17	18								
		01.12	08.12	15.12	22.12	29.12	05.01	12.01	19.01	26.01	02.02	09.02	16.02	23.02	02.03	09.03	16.03	23.03	30.03	06.04	13.04	20.04	27.04								
96	Install.&connect kicker									14.01	[Bar]				02.02																
97	Kicker HV test																														
98																															
99	Install MTV between kicker and collimator																														
100	Install MTV (end TL2 in CLEX)																														
101																															
102	CLEX																														
103																															
104	CALIFES																														
105	To defined																														
106																															
107	PETS tank modifications										05.01	[Bar]				23.01															
108																															
109	TBL																														
110	Move Dump																														
111	Survey before installation girders																														
112	Install. 8 girders																														
113	Install. Cables for all elements TBL line																														
114	Install. Module prototype																														
115	Delivery quadrupoles																														

CTF3 - Shutdown 2008-2009

10.12.08

ID	Text1	December 2008				January 2009				February 2009				March 2009				April 2009				M		
		49	50	51	52	1	2	3	4	5	6	7	8	9	10	11	12	13	14	15	16		17	18
		01.12	08.12	15.12	22.12	29.12	05.01	12.01	19.01	26.01	02.02	09.02	16.02	23.02	02.03	09.03	16.03	23.03	30.03	06.04	13.04		20.04	27.04
116	Install. 3 quadrupoles precision movers																							
117	Install. 13 standart supports																							
118	Install. 13 quadrupoles																							
119	Install. MTV																							
120	Electric connections																							
121	Install. 16 BPS																							
122	Alignement of all elements																							
123	Install. Vacuum																							
124	Install. Electronics BPS- LAPP/Barcelone																							
125	Install Diagnostic Line																							
126	Install dipole																							
127	Install Qdrupoles																							
128	Install MTV																							
129	Install supports BPM																							
130	Install corrector																							
131	Alignements																							
132	Install vacuum (VVS, VPI, Chambers)																							
133	Vacuum connection and start																							
134	Install Dump																							
135																								

CTF3 - Shutdown 2008-2009

10.12.08

ID	Text1	December 2008					January 2009					February 2009					March 2009					April 2009					M
		49	50	51	52	1	2	3	4	5	6	7	8	9	10	11	12	13	14	15	16	17	18				
		01.12	08.12	15.12	22.12	29.12	05.01	12.01	19.01	26.01	02.02	09.02	16.02	23.02	02.03	09.03	16.03	23.03	30.03	06.04	13.04	20.04	27.04				
136	Galerie b. 2010																										
137	PO install power supplies																										