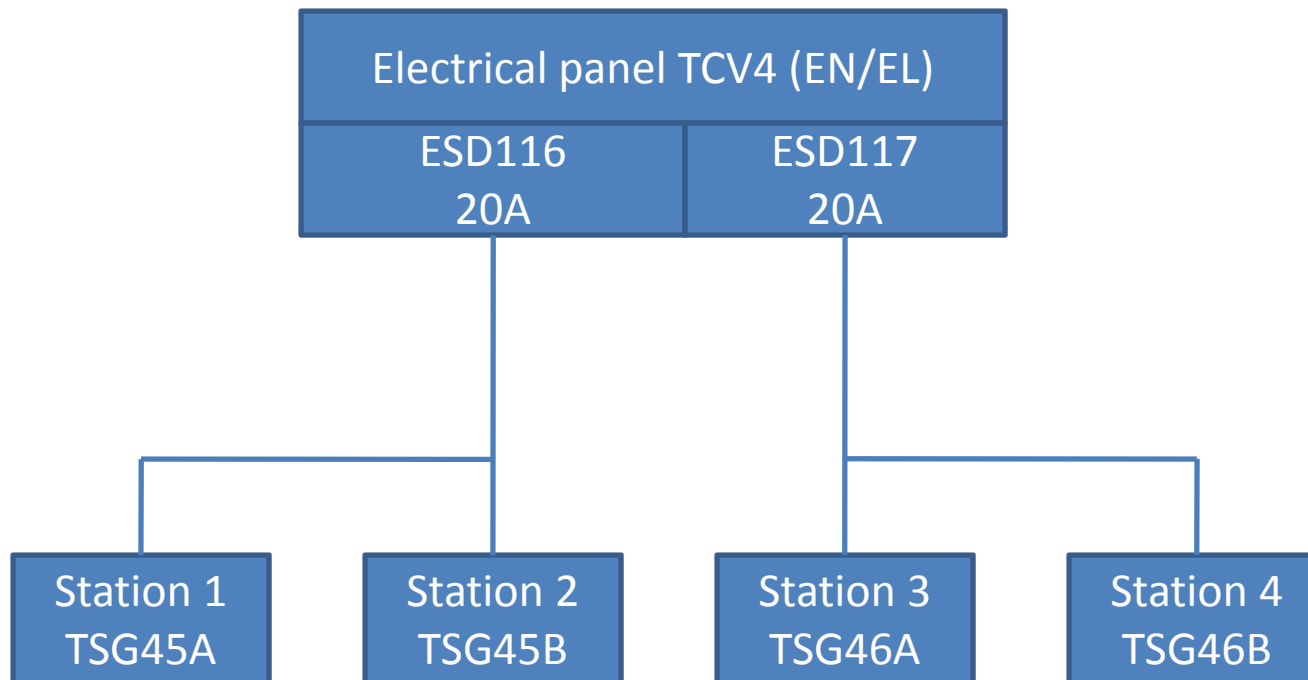


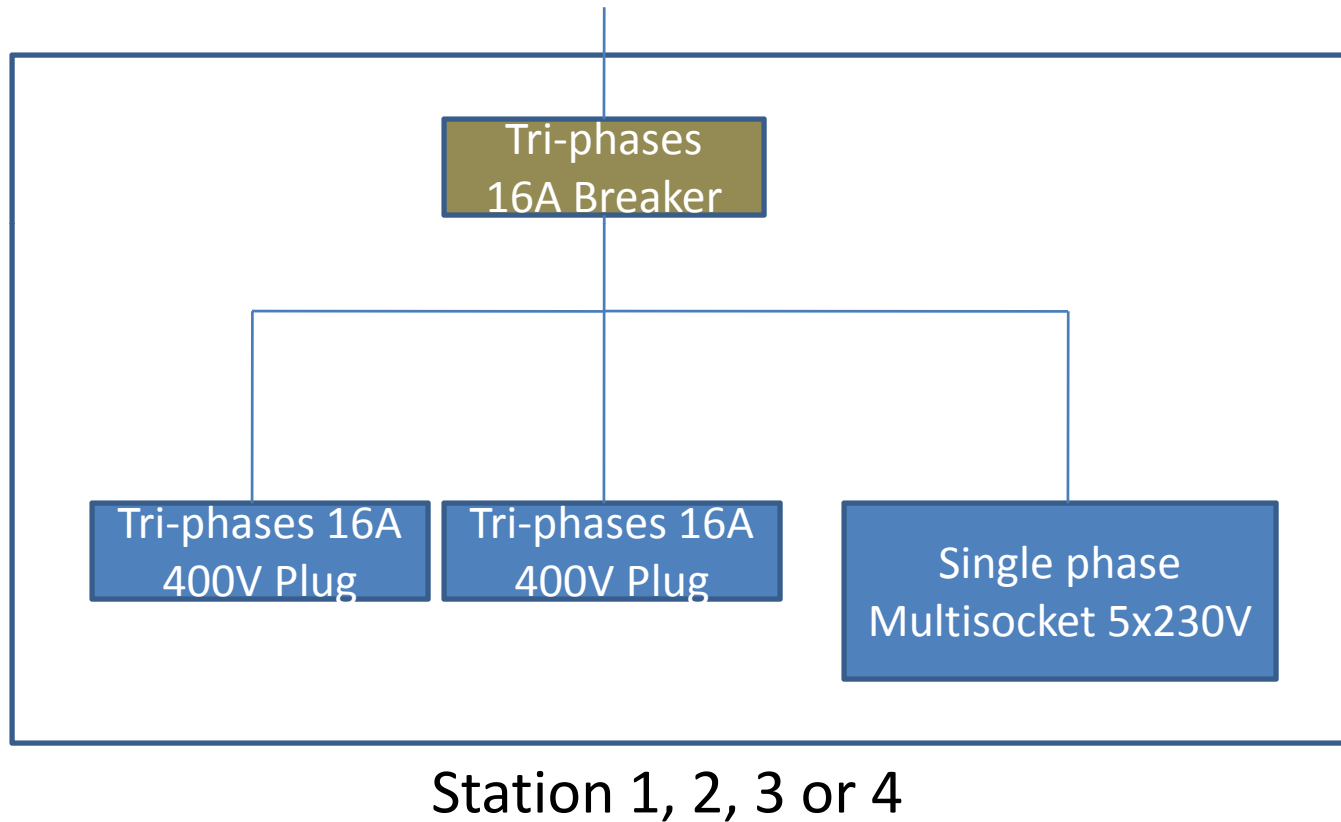
TECHNICAL INSTALLATION

RADWG - 2 APRIL 2009

Electrical Situation



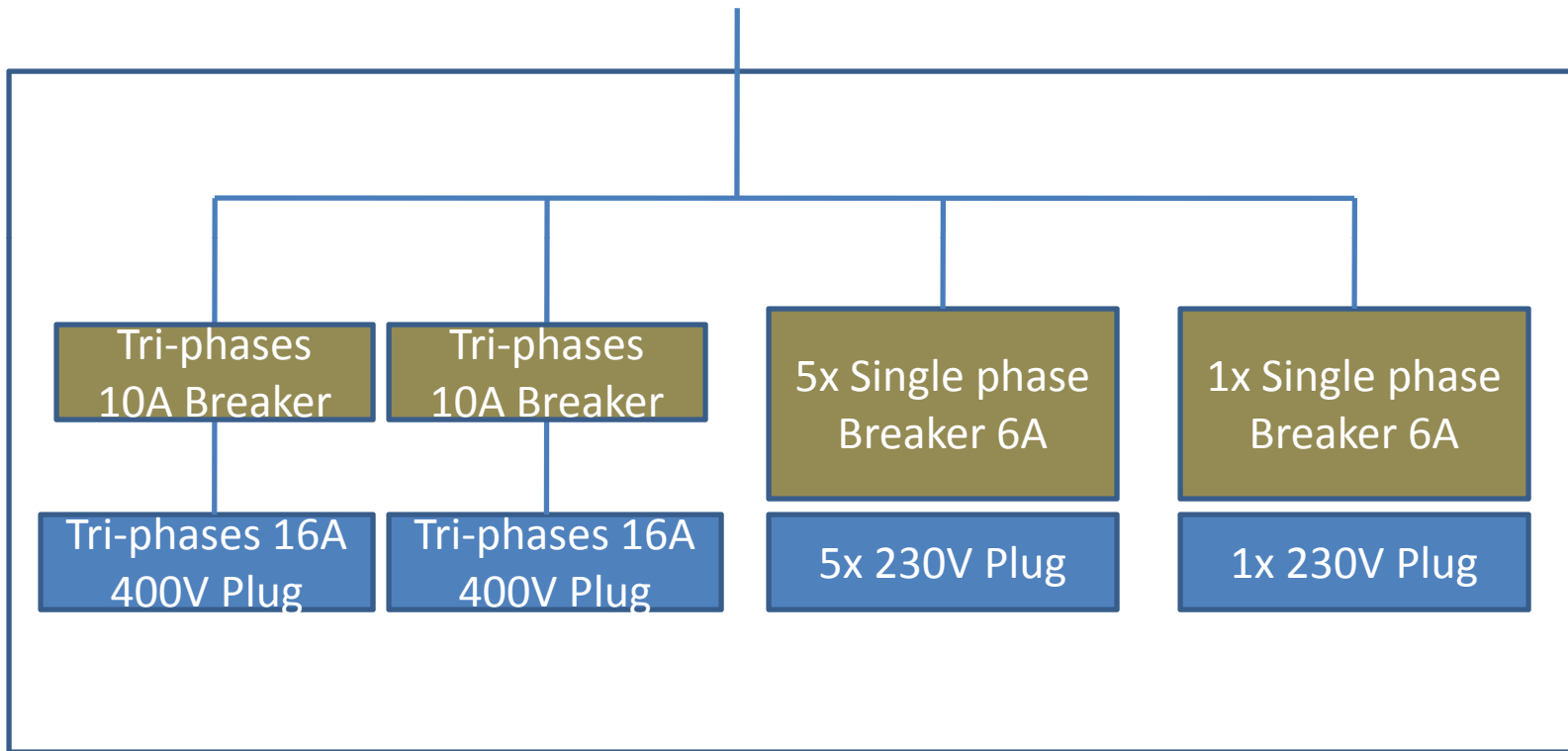
Previous Installation



Previous Installation



New Installation



Station 1, 2, 3 or 4

New Installation



Cabling Summary

For each Station:

- 1 x WorldFIP Cable
- 1 x Profibus Cable
- 2 x NE48 Cable
- 6x monomode optical fiber (only stations 1-2)
- 1 x SubD Cable
- Electrical connections:
 - 2x 3 phases power supply 400A (16A Plug)
 - 5x Single phase 230V (Swiss type 10A)
 - 1 Internal 230V supply reserved for RADMON and FIPDiag

Length of each cable is approx 1.2km (Around 28km in total)

RADMION Installation

- Station 1 and 4 are equipped with RADMION
- RADMION modules are placed on the wall near the stations.
- Deported RADMION module will be placed around the the equipments under test



RADMON



Conclusion and status

- Electrical Modification and RADMON Installation finish next Monday
- Request for gateways sent to BE/CO
- Organization of Dry Run
- Organization of equipments installation in Tunnel

Contact: jerome.lendaro@cern.ch