



LHCb 2009 Q1 report





2009: DIRAC3 fully put in production

m Production activities

- o Started in July
- o Simulation, reconstruction, stripping
 - P Includes file distribution strategy, failover mechanism
 - P File access using local access protocol (rootd, rfio, (gsi)dcap, xrootd)
 - P Commissioned alternative method: copy to local disk
 - d Drawback: non-guaranteed space, less CPU efficiency, additional network traffic (possibly copied from remote site)
- o Failover using VOBOXes
 - P File transfers (delegated to FTS)
 - P LFC registration
 - P Internal DIRAC operations (bookkeeping, job monitoring...)

m Analysis

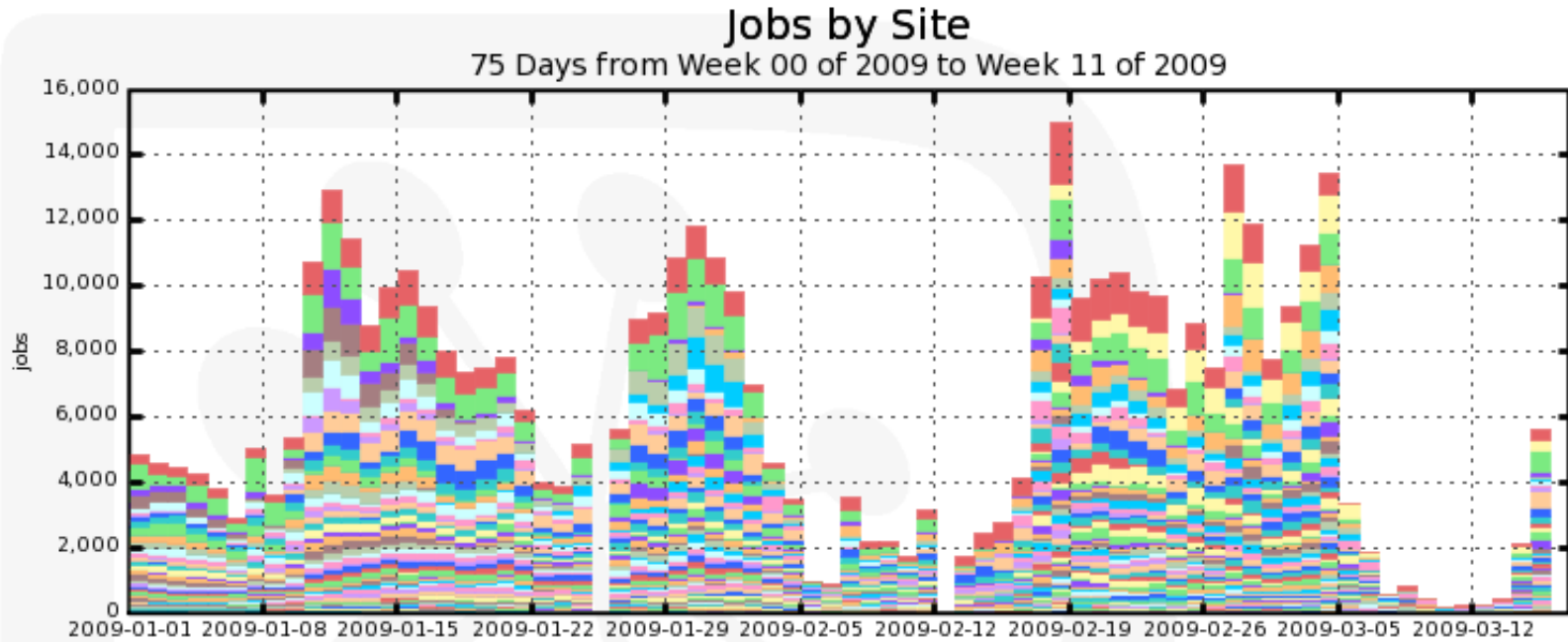
- o Started in September
- o Ganga available for DIRAC3 in November
- o DIRAC2 de-commissioned on January 12th

Call me DIRAC now...



2009 DIRAC concurrent jobs

MI D C ! 3 1 1 : ! R 2 ! s f q p s u



- LCG.IN2P3-T2.fr
- LCG.Glasgow.uk
- LCG.Manchester.uk
- LCG.LAL.fr
- LCG.CNAF-T2.it
- LCG.UKI-SCOTGRID-GLASGOW.uk
- LCG.UKI-LT2-IC-HEP.uk
- LCG.Krakow.pl
- LCG.CSCS.ch
- LCG.CERN.ch
- LCG.UKI-SCOTGRID-ECDF.uk
- LCG.Liverpool.uk
- LCG.SARA.nl
- LCG.USC.es
- LCG.UKI-LT2-QMUL.uk
- LCG.Durham.uk
- LCG.RAL-HEP.uk
- LCG.Legnano.it
- LCG.DESI.de
- LCG.CPPM.fr
- LCG.LAPP.fr
- LCG.TCD.ie
- LCG.MPI-RZG.de
- LCG.CBPF.br
- LCG.PIC.es
- LCG.Dortmund.de
- LCG.BHAM-HEP.uk
- LCG.Oxford.uk
- LCG.UKI-LT2-Brunel.uk
- LCG.JINR.ru
- LCG.GRIDKA.de
- LCG.INR.ru
- LCG.Lancashire.uk
- LCG.LPNHE.fr
- LCG.Cambridge.uk
- LCG.KIAE.ru
- LCG.Torino.it
- LCG.Barcelona.es
- LCG.SRCE.hr
- ... plus 72 more

Maximum: 14,984 , Minimum: 0.00 , Average: 6,153 , Current: 5,603

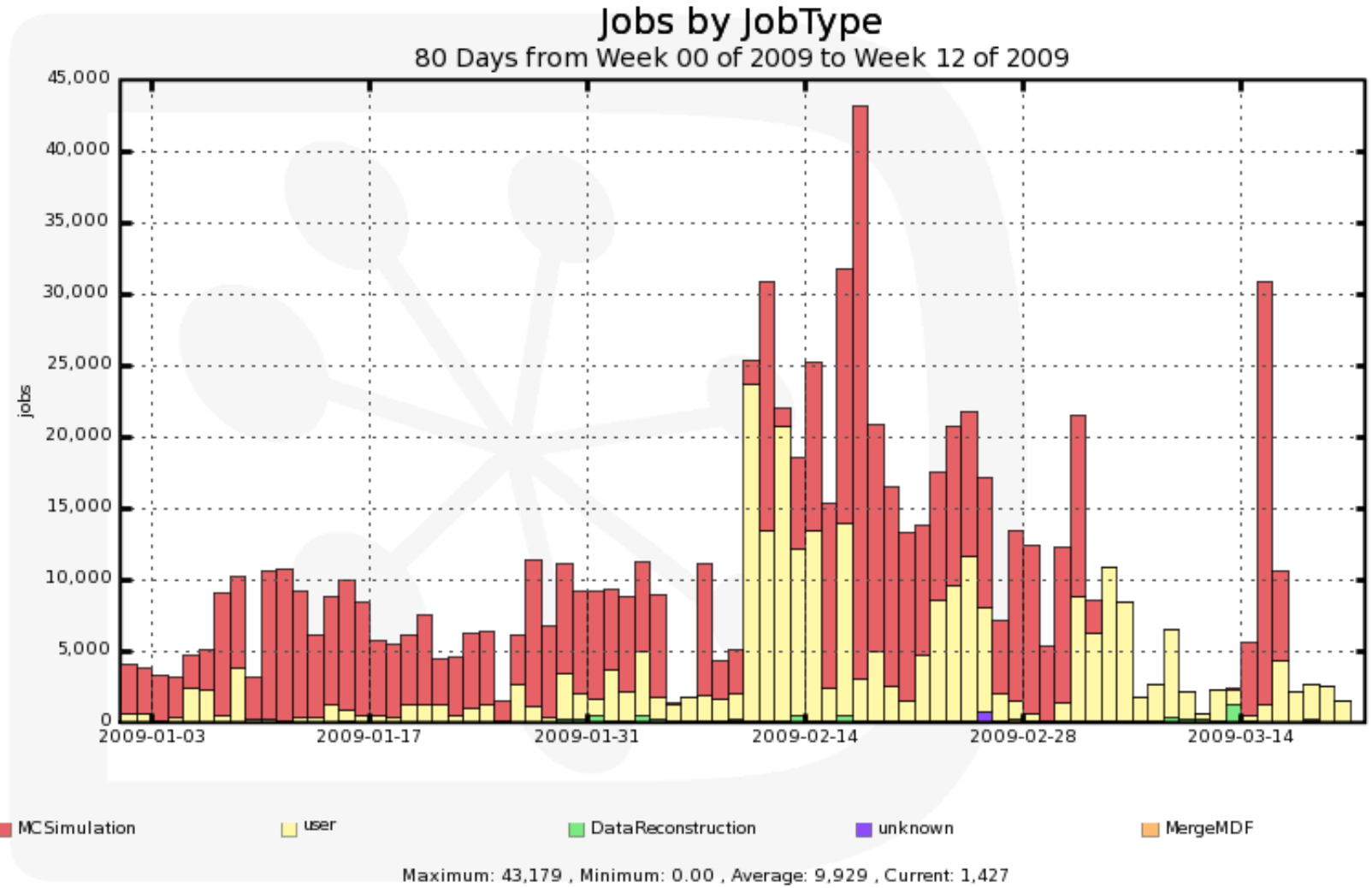
111 sites





DIRAC jobs per day

MI D C ! 3 1 1 : ! R 2 ! s f q p s u



m Mainly functionality tests

- o Improving Data Management (testing pinning, debugging with each site)
- o Running large simulation productions for certifying the largest possible number of sites
 - P Software repository availability
 - P Settings of batch queues, memory limitations
 - P Many GGUS tickets to small sites for fixing configuration
- o Final commissioning of the new bookkeeping system
 - P New schema
 - P New user interface
 - P Used also for processing production requests

m Simulation activity

- o Certification of applications
 - P New version of Geant4 (bugs found, fixed and reported)
 - P New reconstruction software (performance tests)

m Preparation for a new major release of Gaudi

- o In collaboration with ATLAS, to be ready in May



Issues and successes in Q1

- m As usual data access, storage stability...
 - o Several tickets open at Tier1s for storage issues...
 - o Configuration of sites
 - P Hardware setup
 - P Storageware versions still unstable
 - o Still SRM v2.2 is not uniformly implemented
 - P LHCb fully relies on SRM
- m Workload management issues
 - o Several outstanding issues with gLite WMS in 2008
 - o Were due to be fixed by the "mega patch"
 - P Several were not...
 - o Minor impact on LHCb due to pilot jobs
- m During Q1, LHCb started to use generic pilots wherever possible
 - o Working extremely well
 - o Expect the VOMS role=pilot will be implemented everywhere
 - o Missing "time-left" functionality for using filling mode
 - P gLExec was tested on test sites: basic but OK...

MI D C ! 3 1 1 : ! R 2 ! s f q p s u



- m **Simulation... and its analysis (starting in May)**
 - o **Tuning stripping and HLT for 2010 (MC09)**
 - P 4/5 TeV, 50 ns (no spillover), $10^{32} \text{ cm}^{-1}\text{s}^{-1}$
 - P Benchmark channels for first physics studies (~10 Mevts)
 - d $B \rightarrow \mu\mu$, Γ_s , $B \rightarrow Dh$, $B_s \rightarrow J/\psi\phi$, $B \rightarrow K^*\mu\mu$...
 - P Large minimum bias samples (~ 30 mn of LHC running, 10^9 events)
 - d Estimate 2 to 3 months for simulation
 - P Stripping performance required: ~ 50 Hz for benchmark channels
 - P Tune HLT: efficiency vs retention, optimisation
 - o **Physics studies (MC09-2)**
 - P Signal and background samples (~500 Mevts)
 - P Used for CP-violation performance studies
 - o **Long term physics studies (DC09)**
 - P Nominal LHC settings (7 TeV, 25 ns, $2 \cdot 10^{32} \text{ cm}^{-2}\text{s}^{-1}$)
 - o **Preparation for very first physics (if required)**
 - P 450 GeV to 2 TeV, low luminosity
 - P Minimum bias sample (10^8 events)
- m **Commissioning for 2009-10 data taking (FEST'09)**
 - o Uses simulated data as LHCb can't take cosmic rays...



SAM jobs and reports

- m **Need to report on our view of usability**
 - o Tests reproduce standard use cases
 - o Should run as normal jobs, i.e. not on special clean environment
- m **Reserve lcg-admin for software installation**
 - o Needs dedicated mapping for permissions to repository
- m **Use normal accounts for running tests**
 - o Running as "Ultimate Priority" DIRAC jobs
 - o Matched by the first pilot job that starts
 - P Scans the WN domain
 - d Often see WN-dependent problems (bad config)
 - P Regular environment
 - o Should allow for longer periods without report
 - P Queues may be full (which is actually good sign) but then no new job can start!

MI D C ! 3 1 1 : ! R 2 ! s f q p s u



MI D C I 3 1 1 : i R 2 i s f q p s u

