

Outline

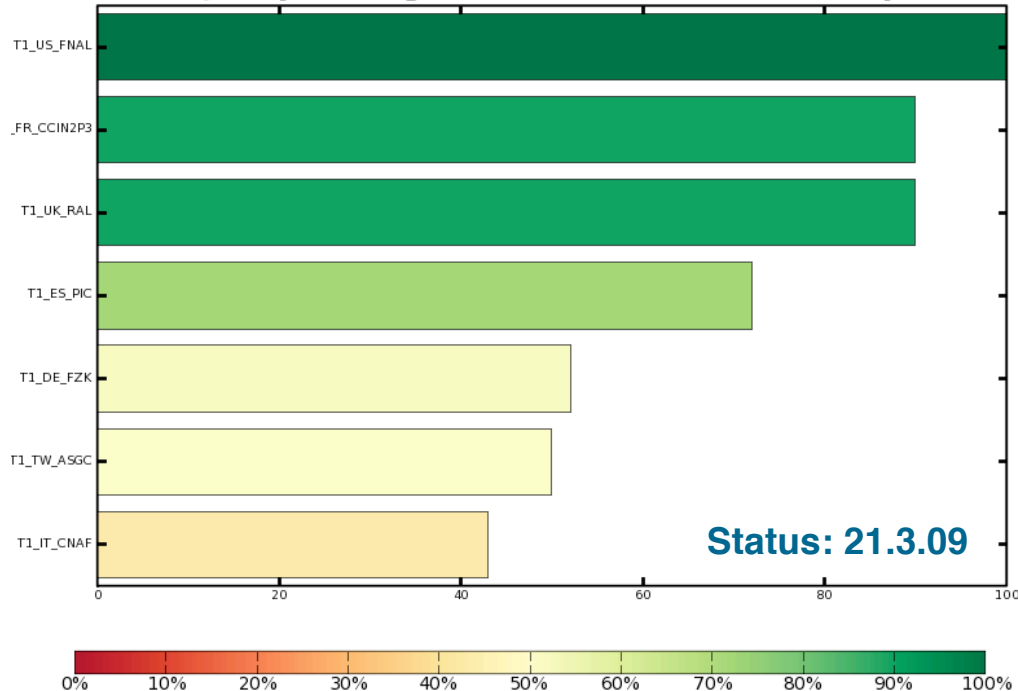
- **Computing Infrastructure**
 - Site commissioning
- **T0/T1/T2 activities**
- **STEP09 planning started**



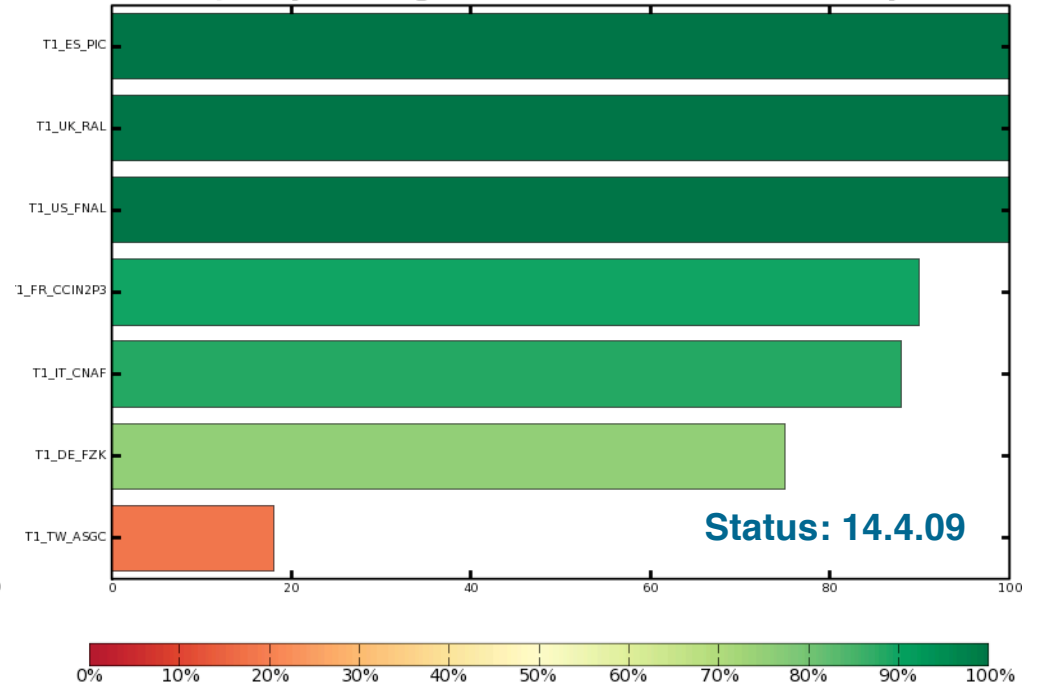
T1 Commissioning results compared:

<https://twiki.cern.ch/twiki/bin/view/CMS/PADASiteCommissioning#ScMon>

Quality Ranking for T1 Site Readiness last 30 days



Quality Ranking for T1 Site Readiness last 30 days

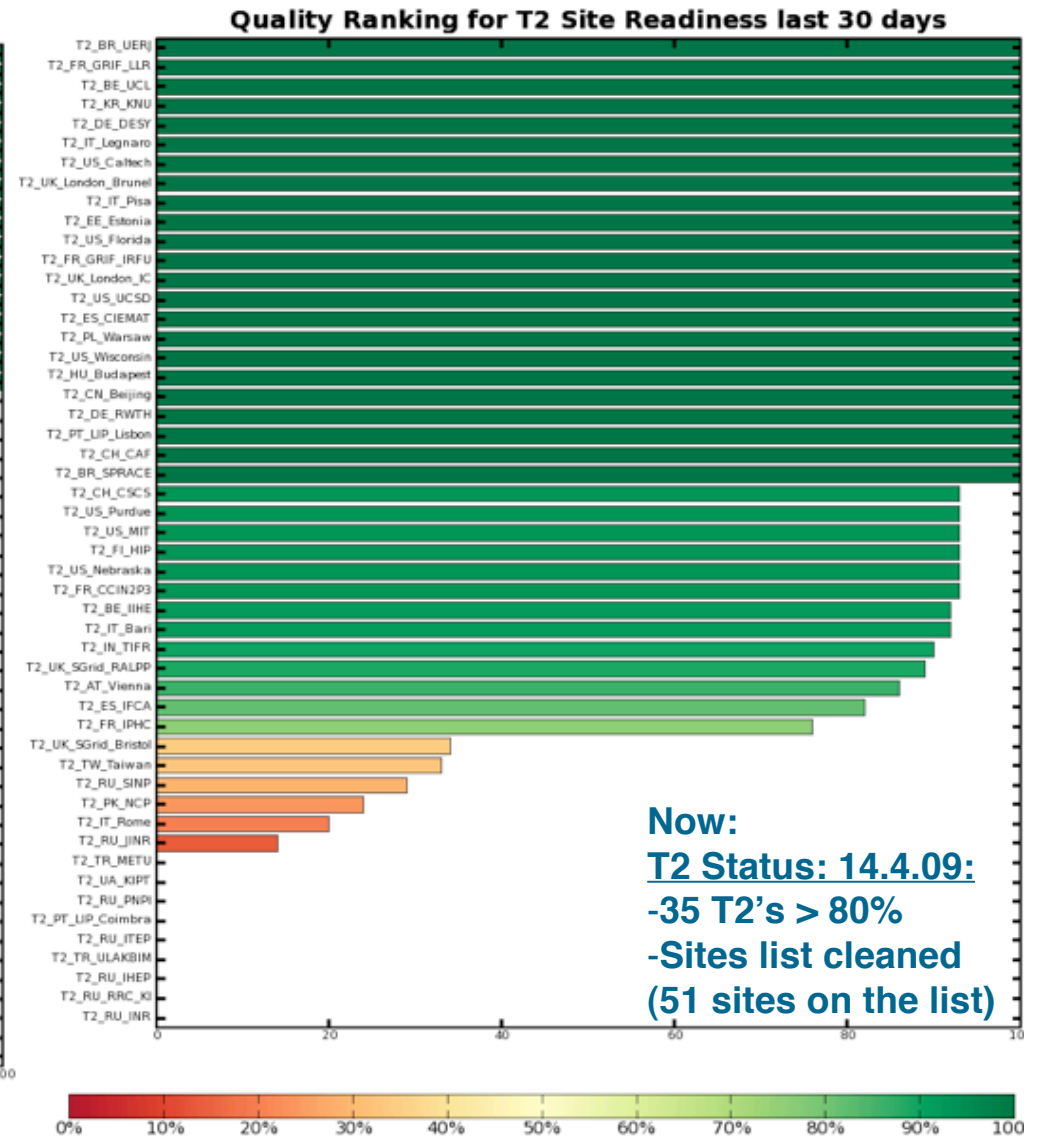
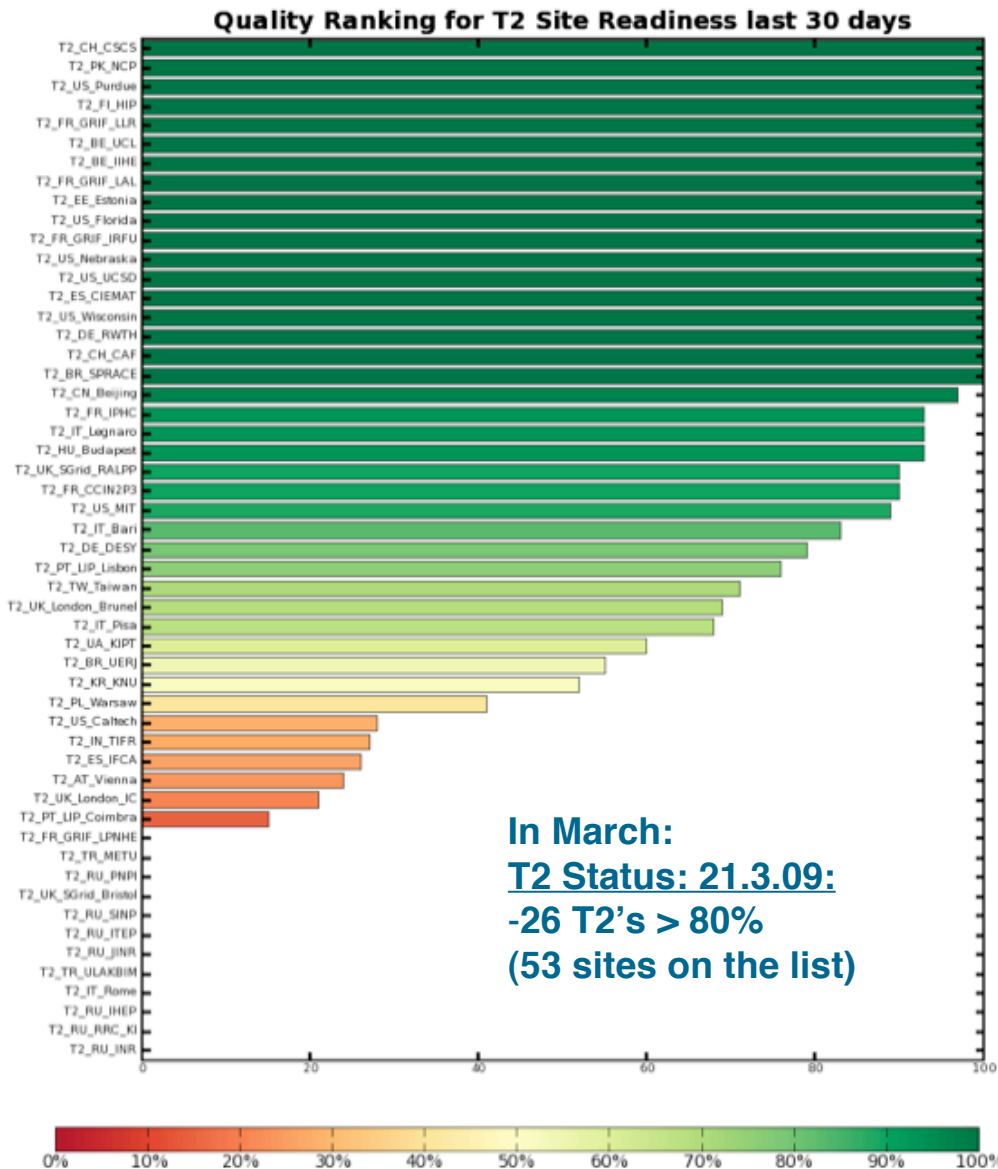


Site commissioning results are public:

- big improvement for T1'S observed over last 3 weeks:
 - Now: 5 T1 sites > 90%, (was 3)



T2 Commissioning results compared:

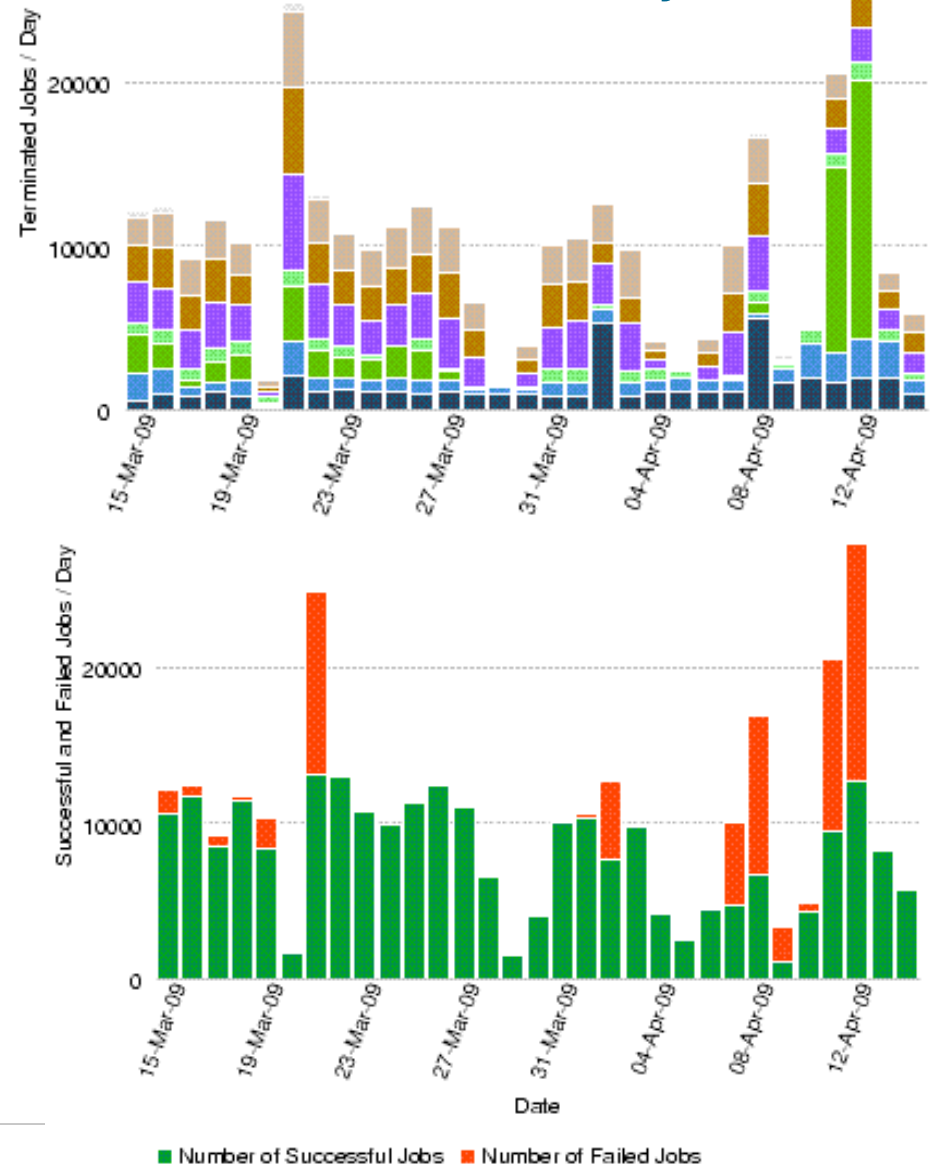




T1 activities

- Re-reconstruction with new conditions/software
 - Cosmics, Monte Carlo
- Stress testing Tier-1's continuously
 - Maintain processing loads at the T1's
 - Classify and report any errors observed.
- Planning for STEP09:
 - Priority is to test tape handling together with ATLAS
 - I/O, staging
 - Important Network transfers tests:
 - T0-T1, T1-T1

“Backfill” T1 test jobs





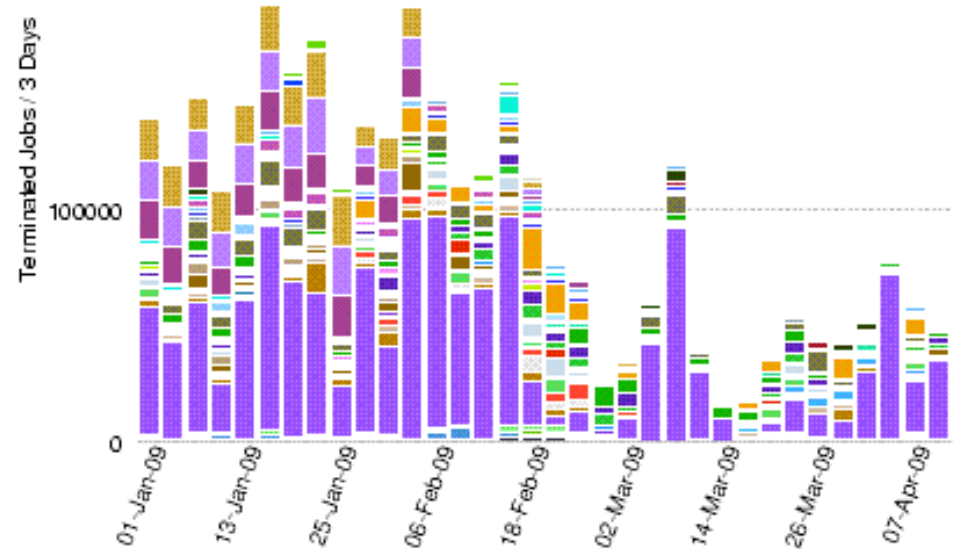
Data Production: T0,T1,T2

Re-reconstructions of CruZet & CRAFT data (~700 TB of RAW, RECO, Skims):

- Second re-reconstruction of CRAFT completed in February
- Second re-reconstruction of CruZet just completed

Large Monte Carlo production completed,
new requests ongoing:

- Summer08, Fall08, Winter08,
- FullSim, FastSim, re-digitization,
- 360 different samples/bins
- **Production rate is quite good**
(~500M FullSim / 5 months + 350M FastSim)
rate not limited by resources...
- **Validation samples made available quickly**
- **Manpower intensive operation**

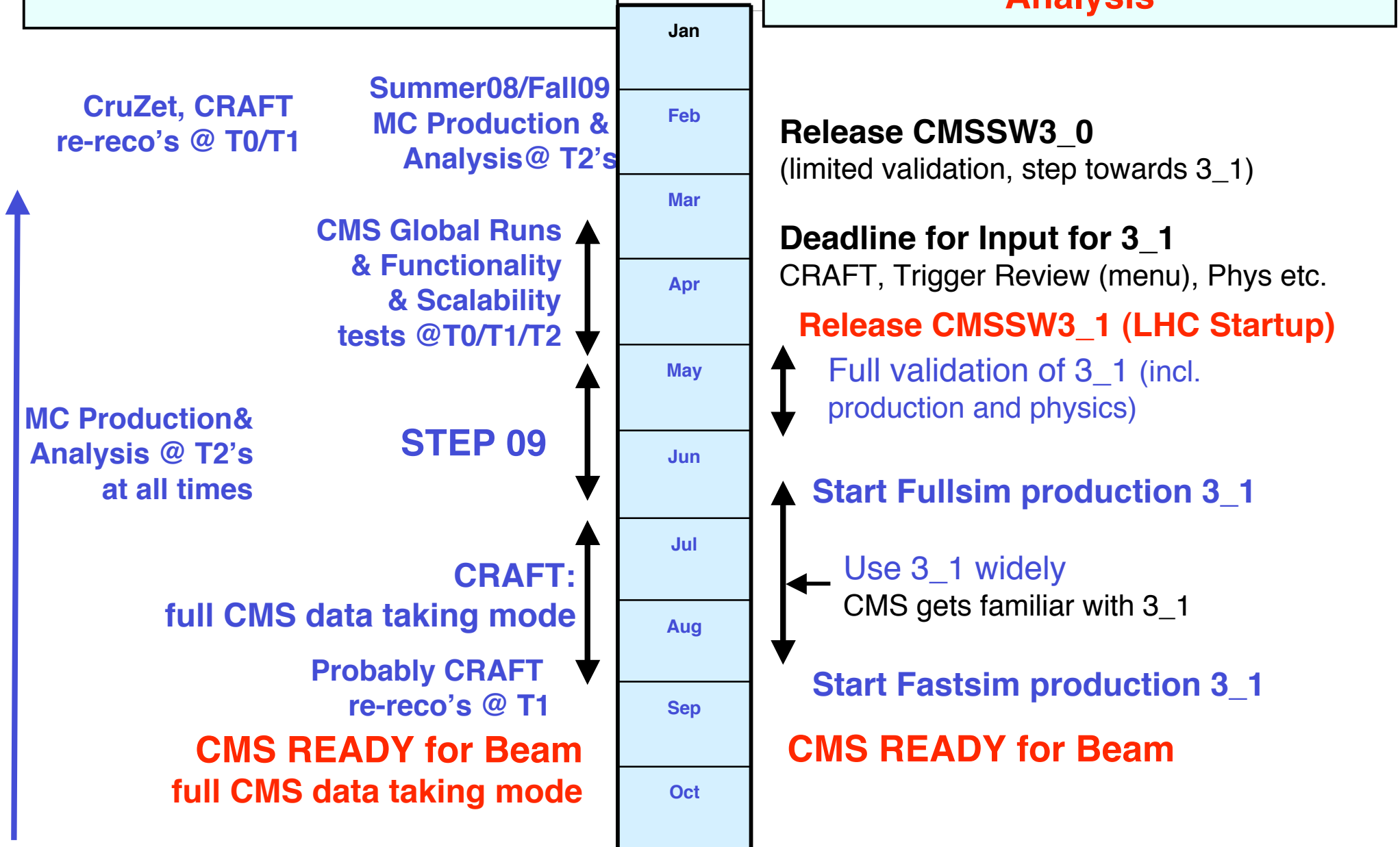


MC production last 3 months

3) Production & Analysis

IS Sci

2) Software, Computing & Physics Analysis





CMS @ STEP09

In CMS STEP09 is coordinated by Daniele Bonacorsi and Oliver Gutsche



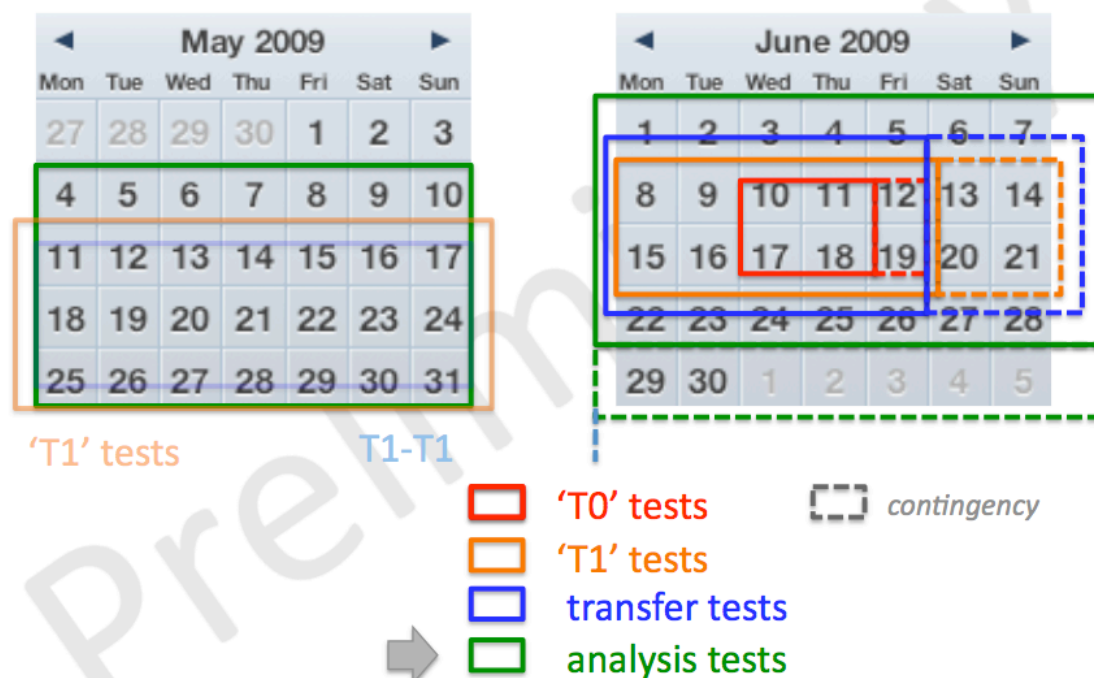
Possible calendar for this test (*CMS alone*)



STEP09 is a set of CMS functionality and scale tests, aligned with tests of other experiments

- T0: tape writing, transfers
- T1: tape write/read/staging, transfers
- Transfers: T0-T1, T1-T1, T1-T2
- Analysis at T2's

Draft plan in place



Daniele Bonacorsi, Oliver Gutsche

13

For status of CMS planning see:

<https://twiki.cern.ch/twiki/bin/view/CMS/PADASiteCommissioning?topic=step09>



Summary & Outlook

- **Data processing of CMS Global and Cosmics Runs is working well.**
 - Data were re-reconstructed twice with latest software and calibrations.
- **Monte Carlo production at Tier2 sites is well established.**
(~500M FullSim / 5 months + 350M FastSim, several CMSSW versions, not resource limited)
- **The availability of the Tier-1/Tier2 infrastructure is monitored closely.**
 - Stress testing Tier-1 sites has started
- **STEP09 and Analysys-End-to-End-test is being planed**
- **Resource requirements for 2009/10 assessed based on LHC schedule**
 - Answering questions to the C-RSG
- **CMS Computing & Offline workshop next week @ San Diego**
 - Finalize planning until start of data taking.