

MC4BSM 2017 @ SLAC

Proposal

MC4BSM

SLAC



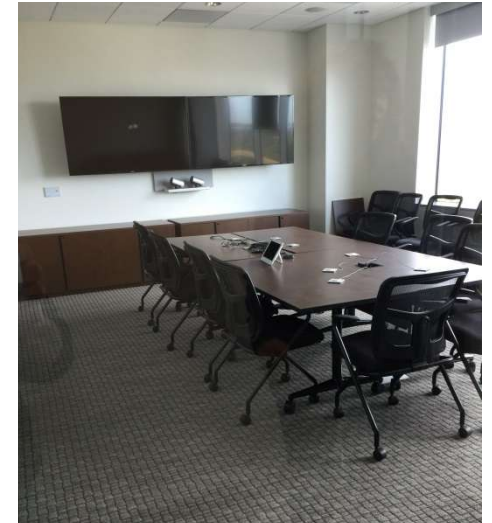
U.S. DEPARTMENT OF
ENERGY

Office of Science



Conference Facilities

- Auditorium: 150 seats (all with power outlets!)
- Tutorial room(s): 90 seats (configurable)
- Breakout rooms available
(must be reserved well in advance)



Travel

SLAC easily accessible by shuttle / rental car from intl airport (SFO)

Flights from Europe ~700€ / ~\$1200 depending on carrier & date

Limited local transportation provided by free Stanford shuttle

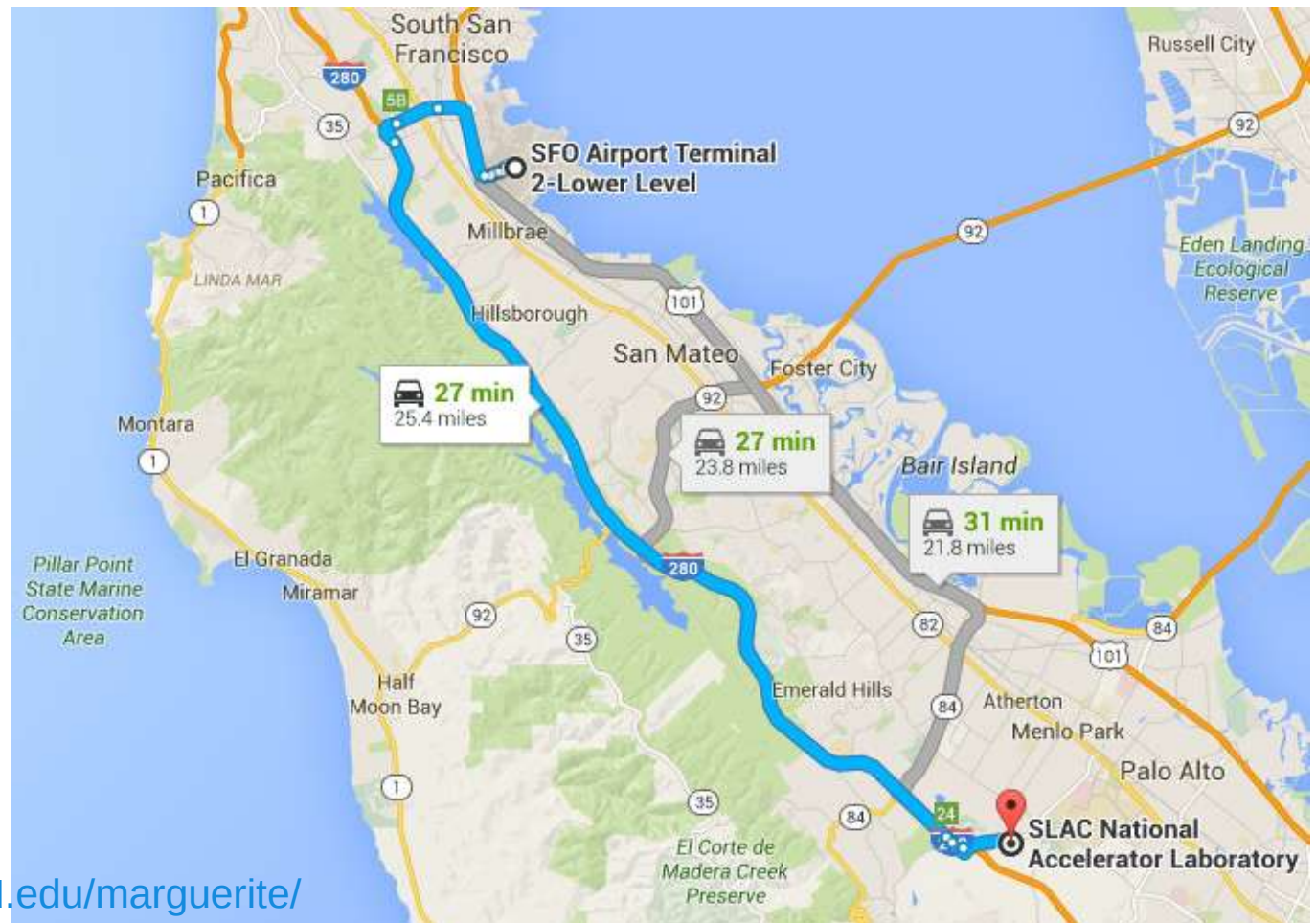
SuperShuttle
Need a lift?



<http://www.supershuttle.com/>



<https://transportation.stanford.edu/marguerite/>



Guest House

On SLAC premises

120 potentially sharable rooms

~\$130/night

Excellent TripAdvisor rating!

74 Reviews from our TripAdvisor Community



<https://rde.stanford.edu/hospitality/stanford-guest-house>

SLAC Cafe

New Cafeteria as of Nov 4, 2015

Breakfast: 6:30 a.m. – 9:00 a.m. (Mon-Fri)

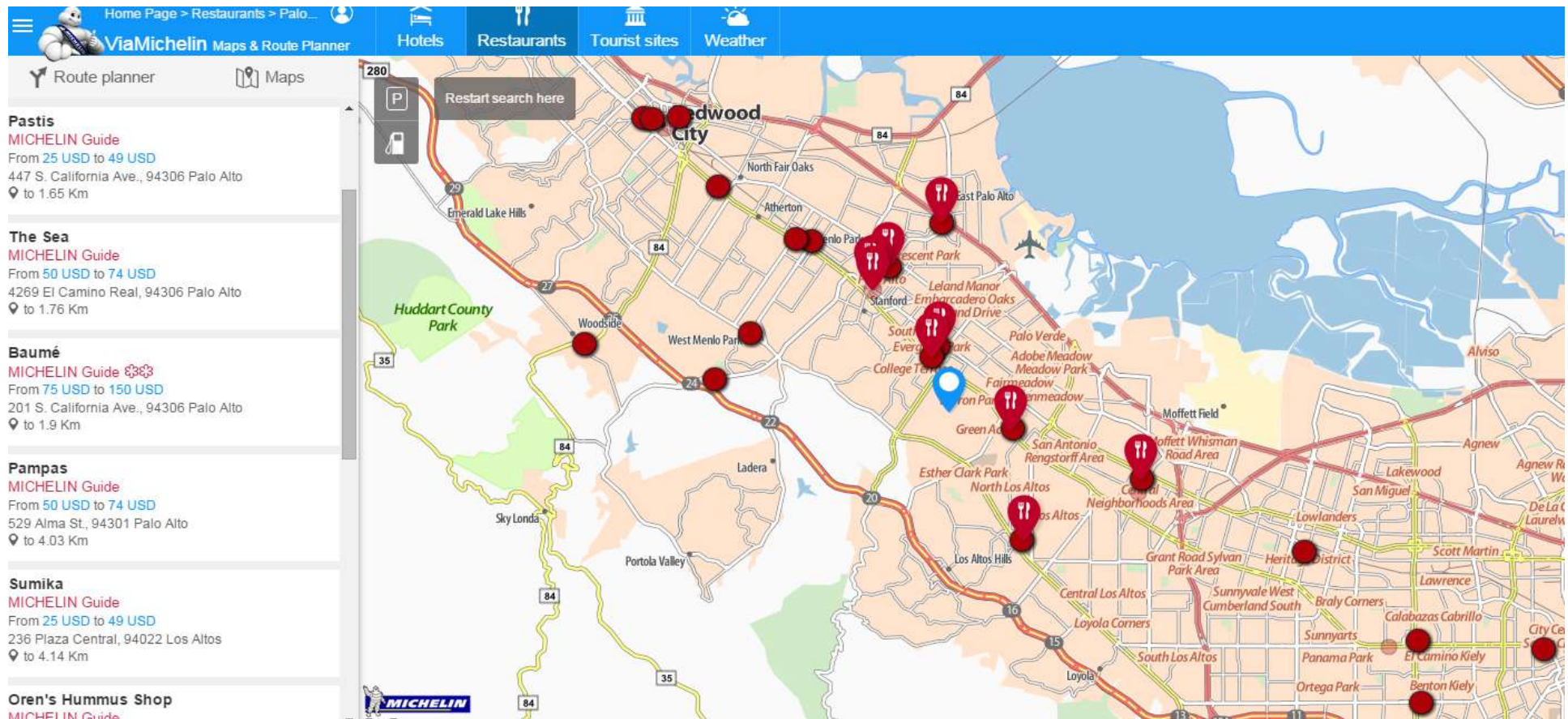
Lunch: 11:00 a.m. – 2:30 p.m. (Mon-Fri)



<https://rde.stanford.edu/hospitality/SLACafe>

Eateries

Many restaurants nearby SLAC/Stanford (by car), some with Michelin stars ... some others without ...



Local Support

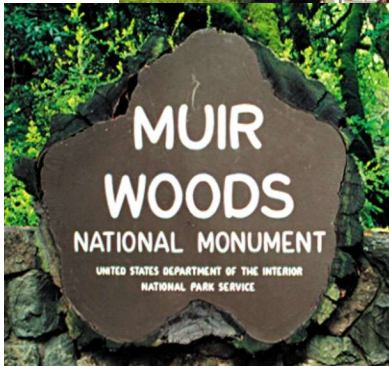
LOC: S. Hoeche & S. Prestel (co-lead), T. Barklow, J. Hewett, M. Peskin, T. Rizzo, Su Dong, C. Young

SLAC will cover local organization, refreshments (coffee breaks) and travel support for attendees in need (young scientists)

Precise budget yet to be allocated, likely 15-20k\$

Activities around SLAC

<http://www.sanfrancisco.travel/>



**Looking forward
to seeing you in 2017!**

