

Tips and tricks

16.02.2017 – E.Urrutia

Curve length parameter

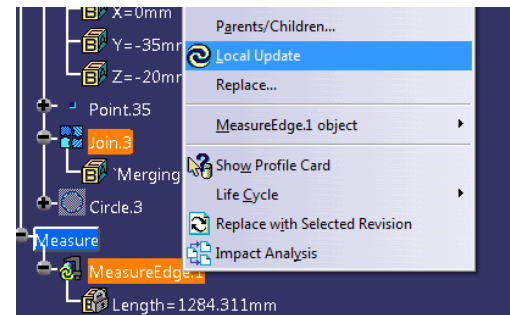
Curve length parameter

Information parameter for different uses in CatPart



First possibility to have curve length measure in the tree via «Measure Item» tool, but some inconvenients :

- Visual pollution (need to be hidden)
- Need to be updated manually after modification



Curve length parameter

Information parameter for different uses in CatPart

Other possibility : use length parameter to display and use curve length for design

2

3

4

5

1

Formulas: ST0680850_01

Length

- Angle
- Time
- Mass
- Volume
- Density
- Area
- Inertia Product
- Energy
- Force
- Inertia
- Mass flow
- Moment
- Pressure
- Angular stiffness
- Temperature
- Linear mass
- Stiffness Constant
- Volumetric flow
- Frequency
- Electric power
- Voltage
- Electric resistance
- Electric intensity
- Acceleration
- Angular Acceleration
- Strain Energy
- Volumic force
- Surfacic mass
- Velocity

Filter On Parameters

Filter Name:

Filter Type: All

Double click on a parameter

Parameter	Active
Length.1	

Edit name or value of the current parameter

Length.1

New Parameter of type: length With Single Value

Add Formula

Delete Parameter

OK Apply Cancel

Formulas: ST0680850_01

Filter On Parameters

Filter Name:

Filter Type: All

Double click on a parameter to edit it

Parameter	Value	Formula	Active
Length.1	0mm		

Edit name or value of the current parameter

Neutra_fiber_length 0mm

New Parameter of type: Length With Single Value

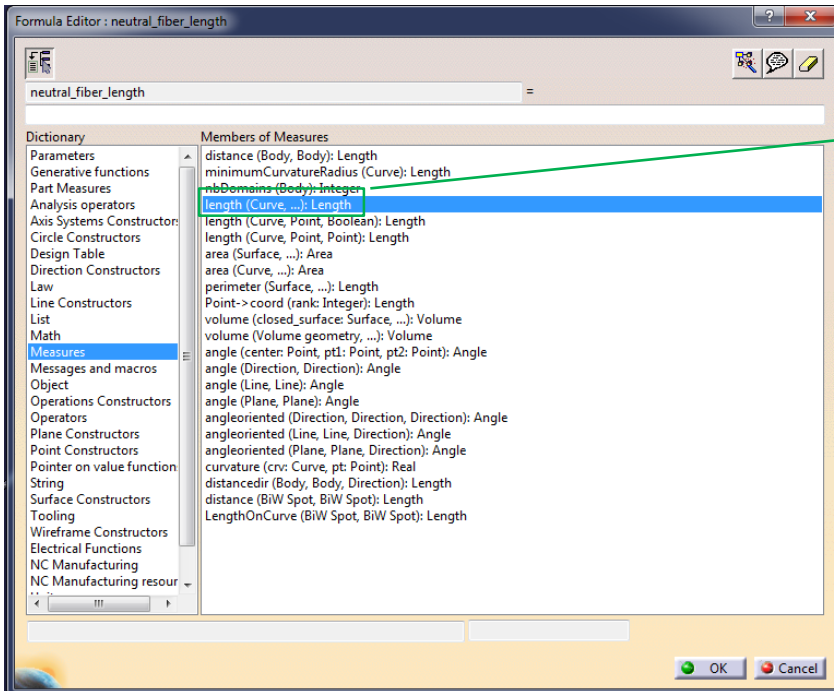
Add Formula

Delete Parameter

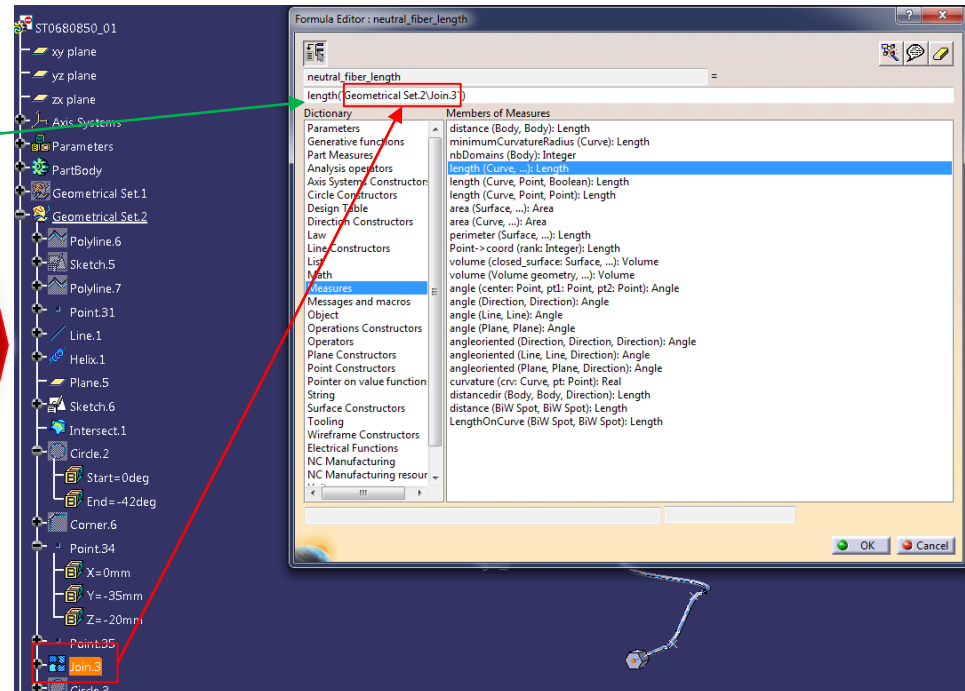
OK Apply Cancel

Curve length parameter

Information parameter for different uses in CatPart



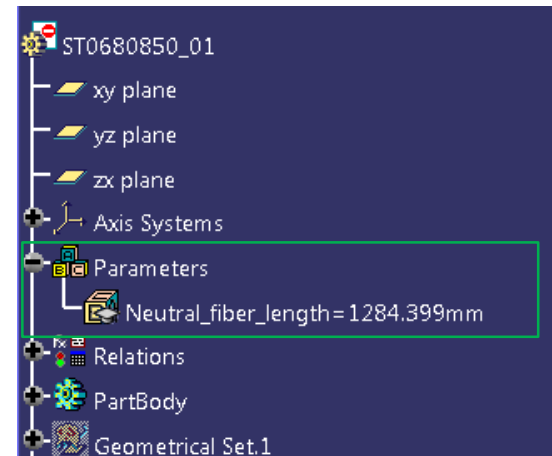
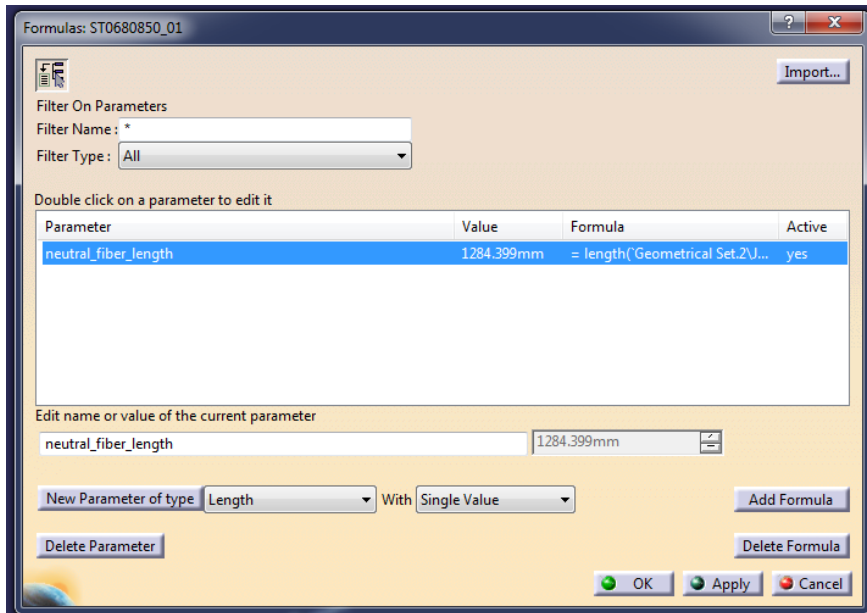
Browse dictionary and double click on length (curve,...) parameter



Then double click on object to measure in the tree

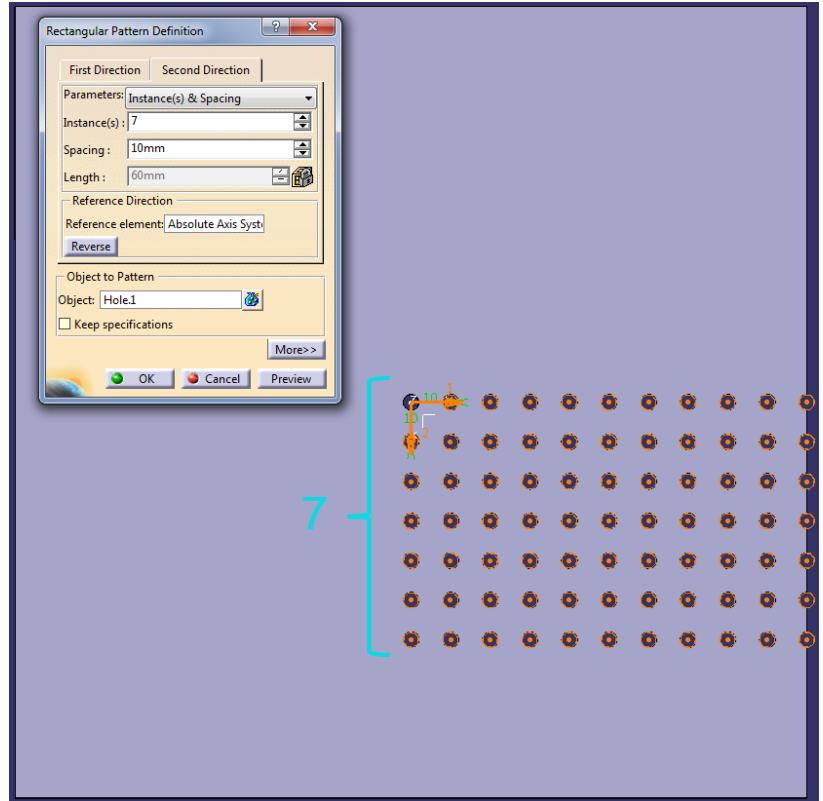
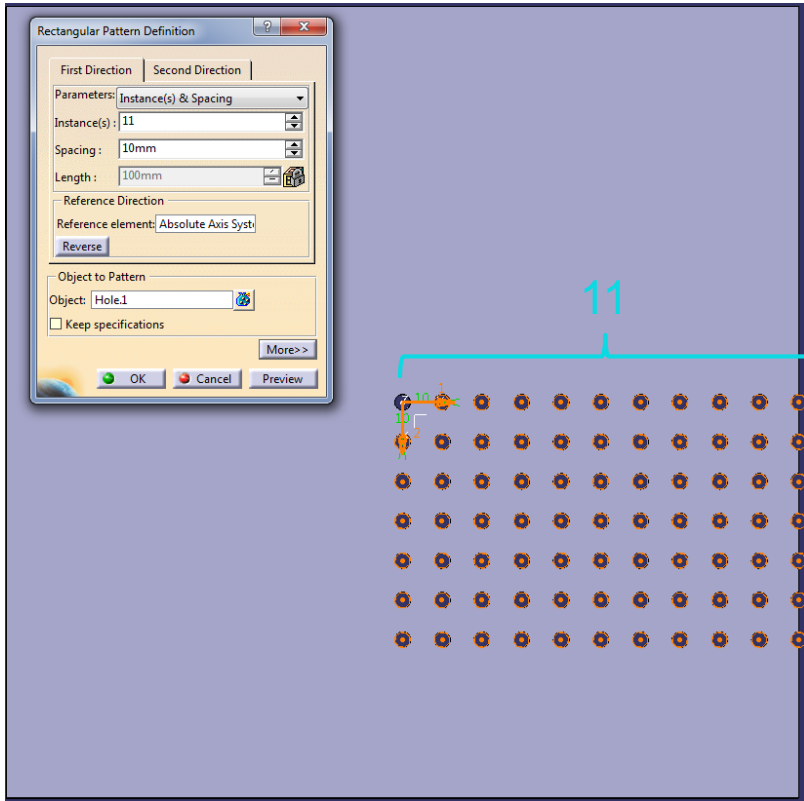
Curve length parameter

Information parameter for different uses in CatPart



Pattern functionalities

Pattern repartition by default

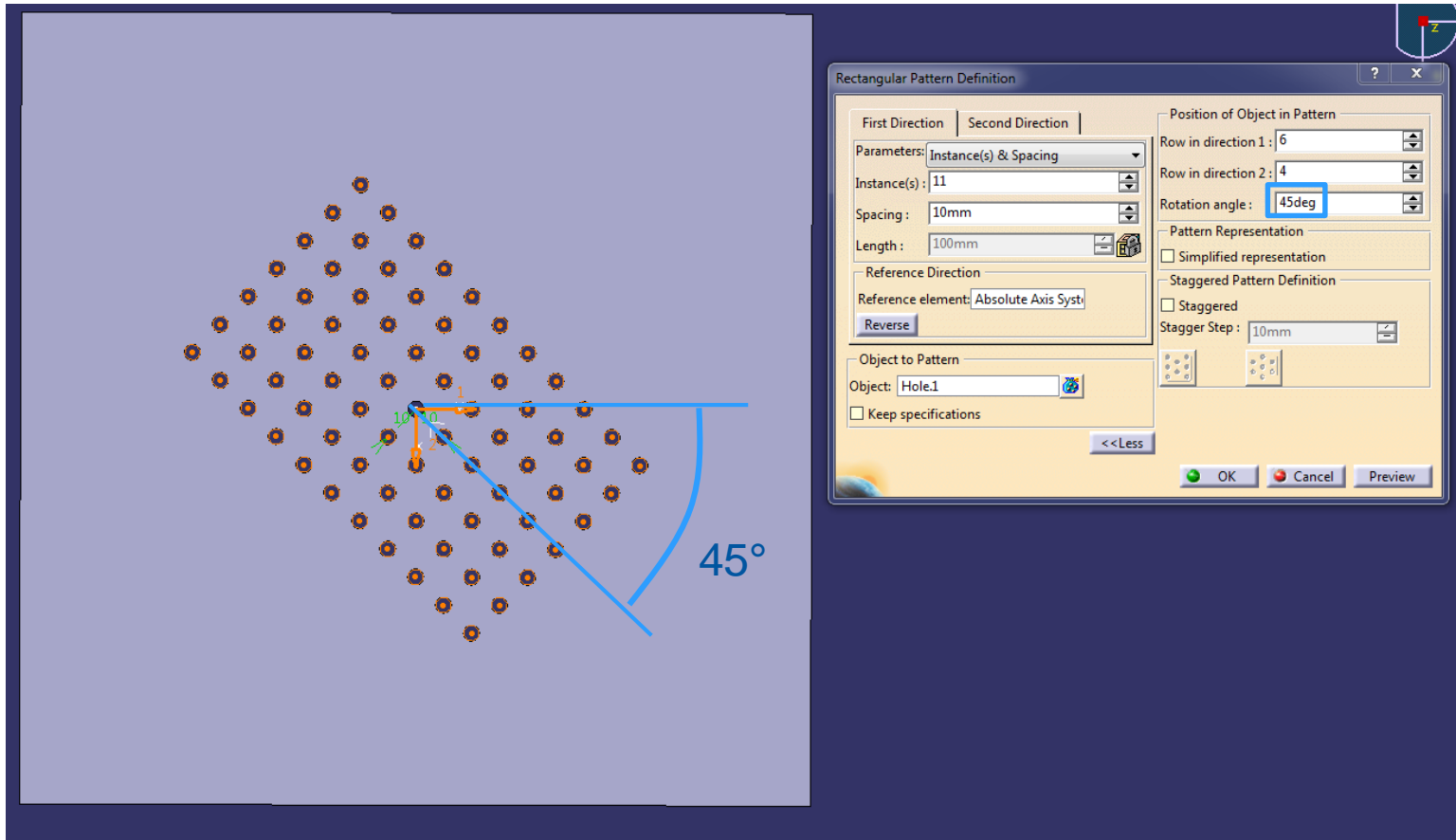


Pattern reordered repartition

The image displays a CAD software interface with a rectangular pattern of holes and its configuration dialog box. The pattern is a 6x4 grid of holes. A red rectangle highlights the first row (6 holes), a green rectangle highlights the second column (4 holes), and a blue bracket indicates the total width of the pattern (11 holes). A blue bracket on the left indicates the total height of the pattern (7 holes). The dialog box, titled "Rectangular Pattern Definition", shows the following settings:

- Parameters: Instance(s) & Spacing
- Instance(s): 11
- Spacing: 10mm
- Length: 100mm
- Reference Direction: Reference element: Absolute Axis Syst. (Reverse button)
- Object to Pattern: Object: Hole.1 (Keep specifications checkbox)
- Position of Object in Pattern: Row in direction 1: 6, Row in direction 2: 4, Rotation angle: 0deg
- Pattern Representation: Simplified representation checkbox
- Staggered Pattern Definition: Staggered checkbox, Stagger Step: 10mm

Pattern reordered repartition with angle



Add feature in pattern definition (under condition) demo

Caution with translate tool in part demo