



WLCG Service Report

Maria.Girone@cern.ch

~ ~ ~

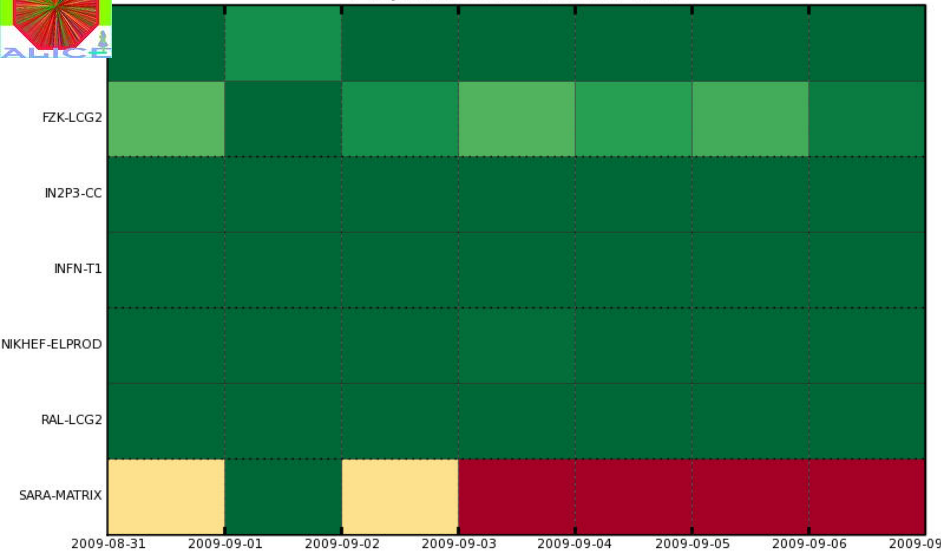
WLCG Management Board, 8th September 2009

Introduction

- Smooth week of operations, good attendance (~15 people) and no major problems
- More systematic use of Site Status Board (SSB) for Tier0 scheduled intervention
 - Quite a few interventions in coming days!
- Significant site instability at SARA for Alice due to a VObox issue (the proxy renewal service stopped) which seemed solved on 1st Sept but came back on 2nd Sept and is still under investigation
- Usual level of on-going problems that are picked up and solved quickly (see daily minutes)
- Castor outage for LHCb on Monday 07.09 from 6.10am to 7.45am due clusterware problems. **SIR requested**

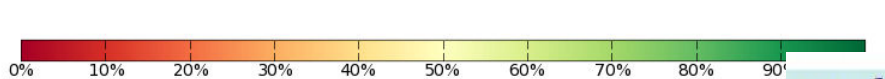
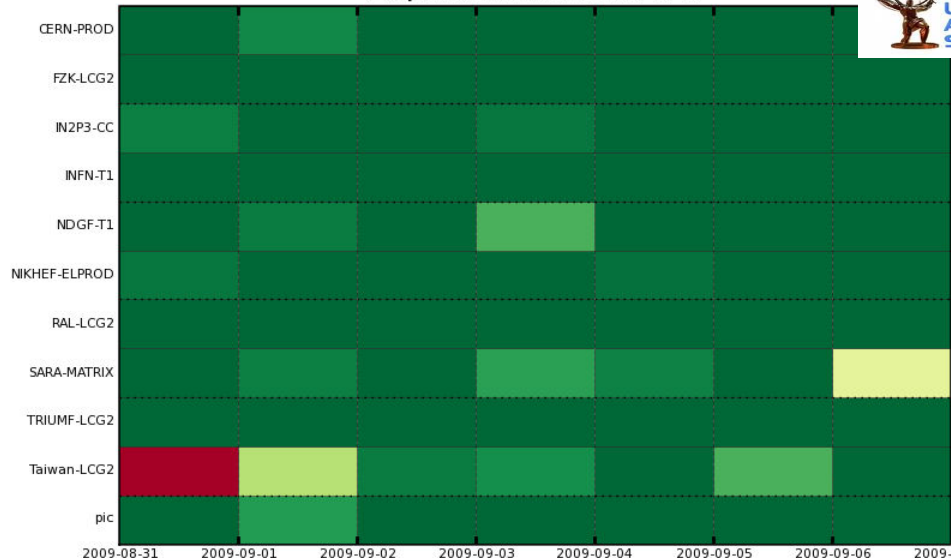
Availability using WLCG Availability (FCR critical)

7 Days from 2009-08-31 to 2009-09-07

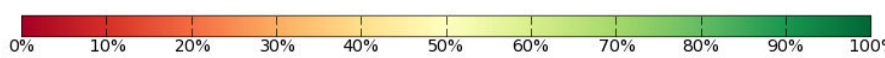
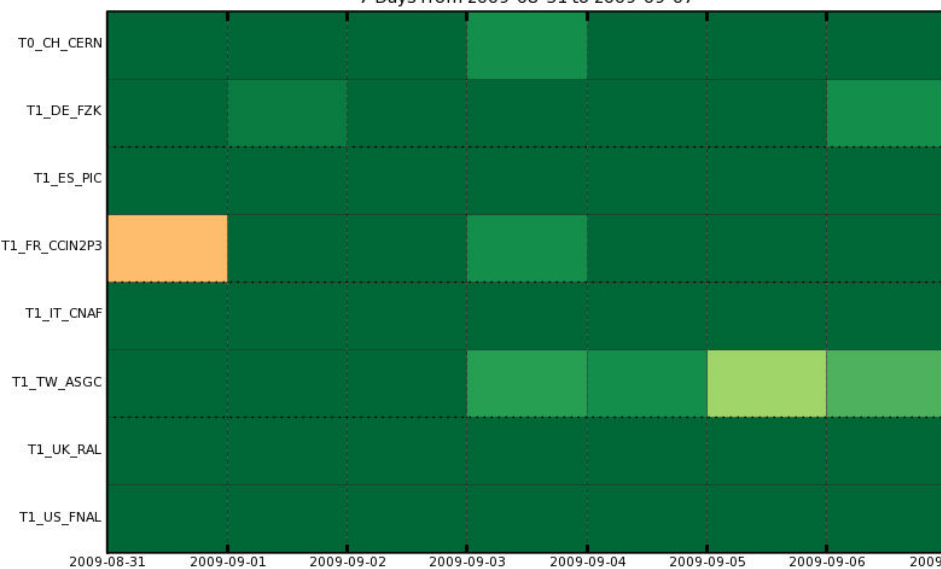


Site Availability using WLCG_SRM2

7 Days from 2009-08-31 to 2009-09-07

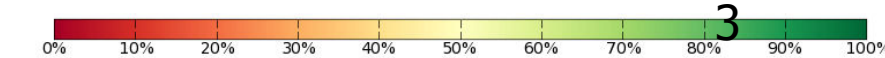
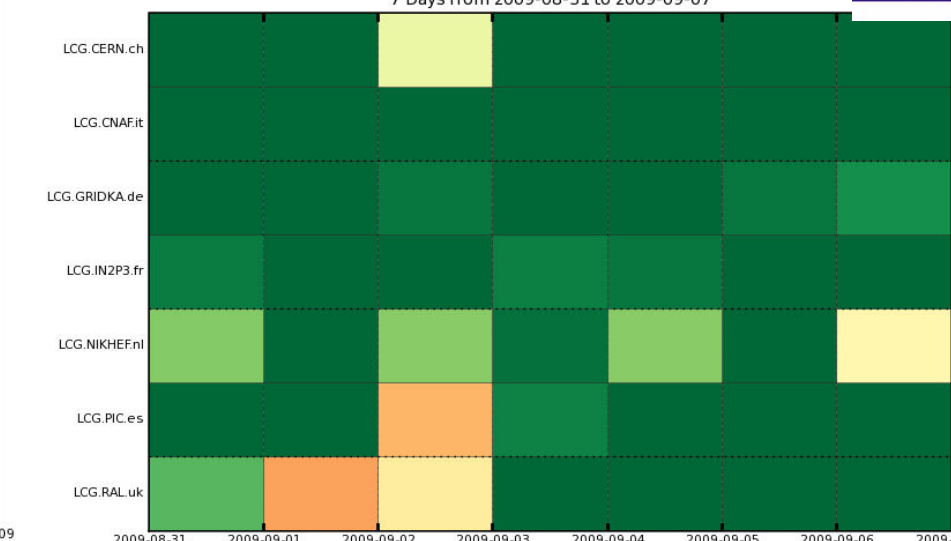


7 Days from 2009-08-31 to 2009-09-07



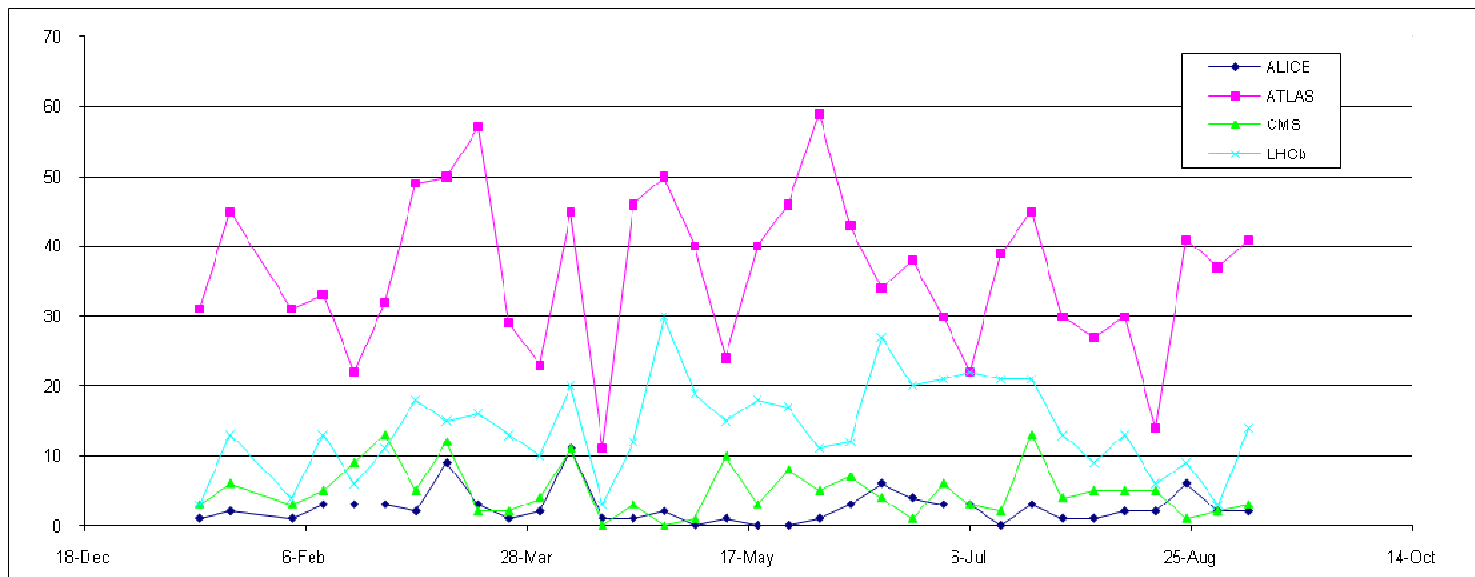
Site Availability using LHCb Critical Availability

7 Days from 2009-08-31 to 2009-09-07



GGUS summary

VO	User	Team	Alarm	Total
ALICE	2	0	0	2
ATLAS	8	33	0	41
CMS	3	0	0	3
LHCb	0	14	0	14
Totals	13	47	0	60



Summary

- Smooth operations – possibly as a result of many people returning from vacation plus experiment / computing “weeks” (ATLAS last week, CMS this) but prior to big ramp-up in activities?
- Lxplus alias change to SL5 discussed. To be finalized at the GDB