



O-E-9

Coordination of middleware roll-out and deployment, middleware pilot and certification testbeds

(EGI-InSPIRE - TSA1.3: Service Deployment Validation)

M. David

(on behalf of IBERGRID
ES-NGI and PT-NGI)





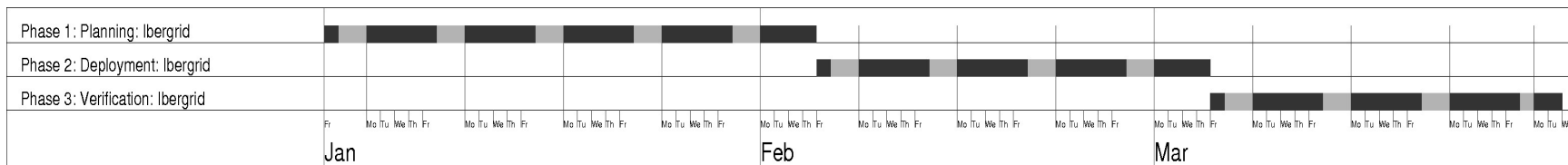
Responsabilities

- **Coordination: Isabel Campos (CSIC) and Jorge Gomes (LIP):**
 - *Mário David (LIP), Gonçalo Borges (LIP), Miguel Oliveira (LIP)*
 - *Alvaro Lopez (IFCA), Alvaro Fernandez (IFIC), Javier Lopez (CESGA)*

Schedules

- **For national and international tasks**

- *Phase 1: Planning until February 4 2010.*
- *Phase 2: Deployment until March 4 2010.*
- *Phase 3: Verification until March 30 2010, one month before 30 April so may be extend.*





- Phase 1 ⇒ Planing:
 - *The startup point: make a plan for the transition for this task:*
 - <https://twiki.cern.ch/twiki/bin/view/EGEE/MiddlewareSupportJobDescription>
 - *Discussions have been underway between Antonio Retico, Steven Newhouse and IBERGRID coordinators for this task.*
 - *Definition of who in IBERGRID will enroll as Task coordinator for the “Pilot Service” and for the “Staged rollout”:* LIP will assume the coordination.
- Phase 2 ⇒ Deployment:
 - Enrollment of the new coordinator in the activity, following the current EGEE SA1 procedures.
 - Identify and start contacts with the NGI's and other players which will participate in this task:
 - *The startup are the sites which are already participating.*
 - *There are a number of partners in EGI-InSPIRE for the TSA1.3.*
 - *Volunteers: sites, users, etc. which enroll due to their special interest in new versions of certain components.*

-
- Phase 3 \Rightarrow Verification:
 - *The transition process should be mainly proven, meaning that the new task coordinator(s) are able to do the task from there on:*
 - *Verify the status of task TSA1.4. Are we able to start using them at this point?*
 - *The ability to appoint new “Pilot Service Coordinators” if a new pilot test is requested.*
 - *The ability to enroll funded partners and eventually volunteers, for new “**pilot tests**”*
 - *For “**staged rollout**”, the activity should have a more stable list of sites.*



Coordination of
TSA2.2 and **TSA2.3**
IBERGRID

Close synergies/interaction
between tasks

- TSA1.4: all tools presently hosted at CERN, twikis, savannah, mailing lists will have to be available a short time after the EGI start.
- Enrollment of NGI's, users, developers in the pilot services and staged rollout, Early Adopters (EAs).
- Redefine the registration procedure of EAs.
- We should not forget that EMI/UMD is more than gLite components: UNICORE and ARC

