

Old Photos

<http://cdsweb.cern.ch/record/795458>

Maria Fidecaro, Alec Merrison (later sir Alec), Alan Wetherell

In 1955, at the Nuclear Physics Research Laboratory of the University of Liverpool.



<http://cdsweb.cern.ch/record/989640>

Start-up of the PS, November 1959

During the first hours of the start-up of the PS in the control room, from left to right: John Adams, Hans Geibel, Hildred Blewett, Chris Schmelzer, Lloyd Smith, Wolfgang Schnell, and Pierre Germain



<http://cdsweb.cern.ch/record/40256>

Helmuth Faissner and Maria Szeptyka (1962)



<http://cdsweb.cern.ch/record/40349>

Discussion at the coffee table : left to right V. Weisskopf, A. Orkin-Lecourtois and C. Peyrou (1963)



<http://cdsweb.cern.ch/record/41346>

Kjell Johnsen shows Willi Jentschke and Hildred Blewett some of the emerging results. On the left is George Schaffer who was responsible for the ISR control system. (1971)



<http://cdsweb.cern.ch/record/41498>

The Theory Division welcomed Nobel Prize Winner Murray Gell-Mann for a stay. He is here in discussion with Mary Gaillard (1969)



<http://cdsweb.cern.ch/record/918046>

At S155. Dominique Guillemaud



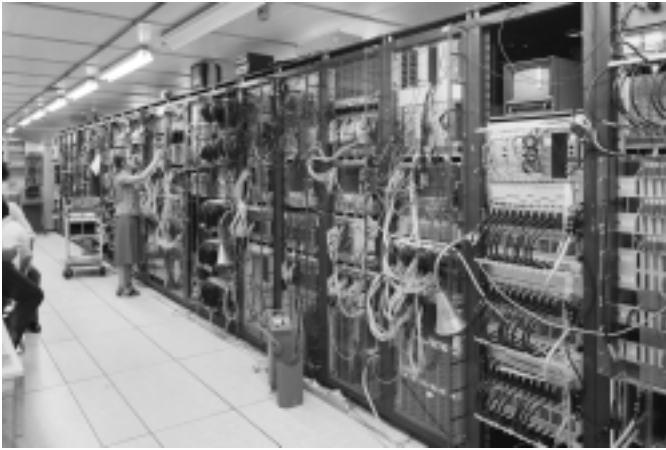
<http://cdsweb.cern.ch/record/917315>

Council session (1977). Kjell Johnsen, Hildred Blewett



<http://cdsweb.cern.ch/record/969431>

At NA1: the electronics barrack



<http://cdsweb.cern.ch/record/969421> (like this one)

<http://doc.cern.ch/archive/electronic/cern/others/PHO/draft/7908018.jpg>

Claude Serre working on her experiment at ISOLDE (1979)



<http://cdsweb.cern.ch/record/969699> (we like this one)

<http://doc.cern.ch/archive/electronic/cern/others/PHO/draft/8010439.jpg>

The Radiobiology Group. Karen Panman, Marilena Streit-Bianchi, Roger Paris.



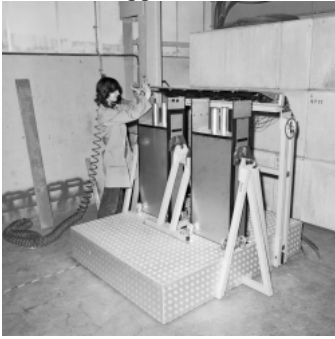
<http://cdsweb.cern.ch/record/969689>

in the new PS Main Control Room (1980)



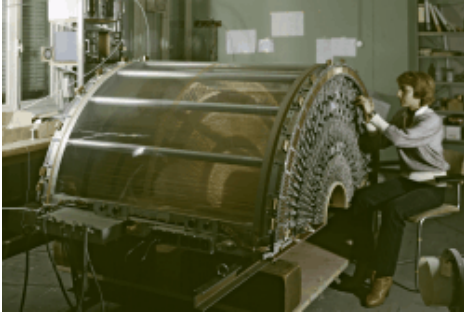
<http://cdsweb.cern.ch/record/969558> (maybe)

Uranium/copper calorimeter



<http://cdsweb.cern.ch/record/969528> (we like this one)

At R807 (1979)



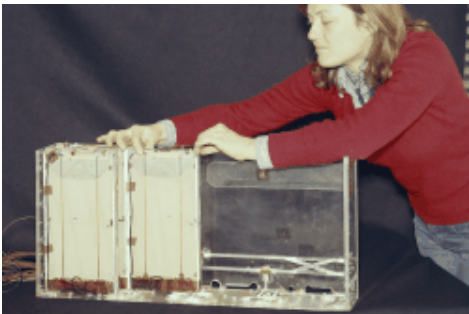
In the Lab of Health and Safety Division

<http://cdsweb.cern.ch/record/917885>



<http://cdsweb.cern.ch/record/917756> (maybe)

Cristina Vannini works on one of the little drift chambers of the vertex detector



plus pictures from the scanning times...

http://cdsweb.cern.ch/search?ln=en&p=scanning&f=&action_search=Search&c=Photos&sf=&so=d&rm=&rg=10&sc=0&of=hb

probably third one

A MYLADY scanning table for bubble chamber pictures

Aug 1974



or #2

Measuring BEBC pictures with ERASME

Apr 1980

