

LHC Collimators low level control rack test experience in CNGS

A. Masi

Contents

1. **The electronics installed for the test**
2. **Problems experienced and actions taken**
1. **Conclusions**



Low level control rack for 1 collimator

Material installed :

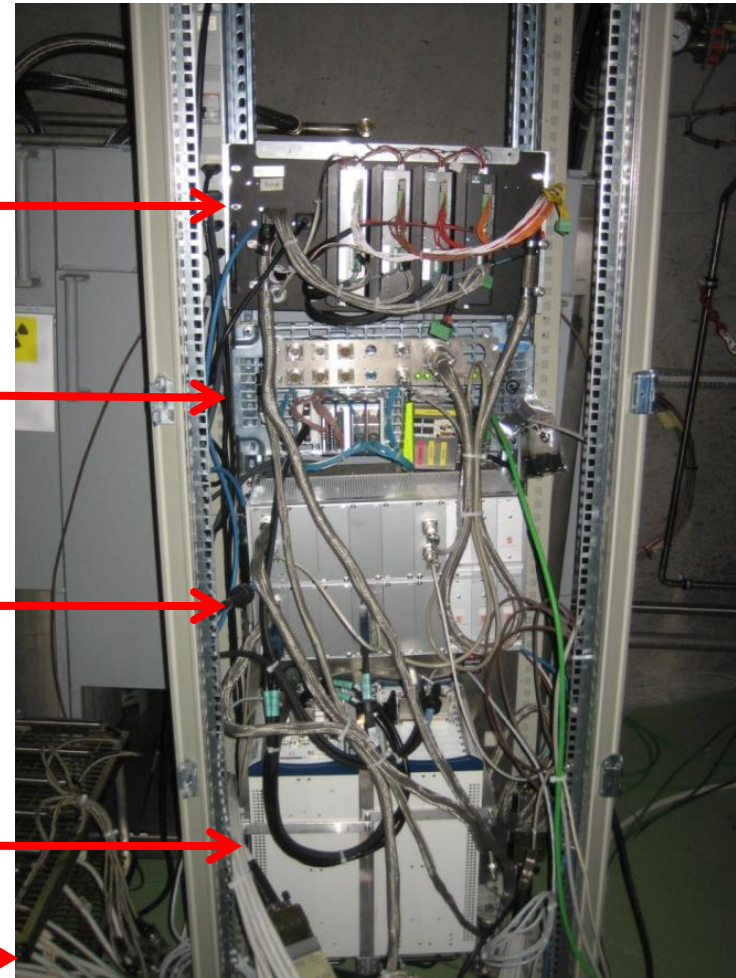
Stepper Motor Drivers x4

I/O digital and analog modules compact RIO
(End switches Acq, driver control...)

Europa crate (custom electronic for LVDTs
and Resolvers excitation/acquisition, power
supply)

National instrument PXI MDC + PRS (ADC,
DAC, FPGA cards, power supply)

4 Motors + resolvers and 7 LVDTs near the
rack to simulate collimator



2- Problems experienced and actions taken

- 21/04/2010 12:40 : Lost communication with low-level system
→ PRS power supply failure, circuit breaker tripped.
Recovery Action: (**access required**) Replaced the power supply of PRS
- 30/04/2010 8:00 : MDC blocked into ARMED state
→ Recovery Action: (**by remote**) MDC FPGA is stuck. Reset the FPGA
- 30/04/2010 8:15: PRS rebooted by itself.
- 30/04/2010 10:30 : Lost communication with MDC.
→ Recovery Action: (**by remote**) Hardware reset of MDC
- 30/04/2010 18:00 : Resolvers steps lost.
→ Recovery Action: (**by remote**) Reset resolvers reading on FPGA
- 02/05/2010 13:00 : MDC driver reading timeout
→ Recovery Action: (**access required**) Reset drivers. Driver still not OK. Driver failed to be replaced....

2- Problems experienced and actions taken

- **02/05/2010 13:00: MDC CPU stuck error**
 - Recovery Action: **(by remote)** MDC FPGA is stuck. Reset the FPGA
- **This week-end : Many system instabilities:**
 - MDC FPGA is stuck
 - PXI rebooted itself
 - Network communication temporarily lost
 - Recovery Action: **(by remote)** OK after PXI or FPGA reset

3-Conclusions

- The test has been extremely useful to know the problems can affect the operation of the LHC collimators as consequence of the radiations on the low level control electronics
- The majority of the problems experienced can be fixed by remote resetting FPGA cards or the entire PXI system
- The only critical failures experienced have been:
 - PXI power supply failed
 - Stepping motor driver dead
- These failures requires a tunnel access to recover the correct system operation

The collimator control electronics is still working right now..... Many problems experienced but the LHC Collimators low level control is hard to die !!!!!!!!!!!

