

Working with Windows 7 at CERN

Michał Budzowski
IT/OIS



- Windows 7 released in October 2009
- Available at CERN since December 2009
- Default Operating System for new Windows computers at CERN
- Improvements in the areas of:
 - usability
 - security
 - stability



- Part 1: Windows 7 at CERN
- Part 2: New concepts of Windows 7
- Part 3: Common questions





Part 1

Windows 7 at CERN

- „My Documents” are redirected to DFS as before
- Printing works in the same way as before
- Applications are managed with CMF as before



- Windows 7 is supported at CERN:
 - On all new PCs bought from CERN stores
 - On most of the older PCs satisfying hardware requirements
- Windows 7 is available for installation:
 - On all PCs satisfying minimum hardware requirements
- To check if Windows 7 is supported on your machine go to:
<https://cern.ch/winservices/Services/ComputerAccounts/ComputerAccountStatus7.aspx>
- Windows 7 32-bit is the default OS for new Windows installations



Windows 7 32-bit	Microsoft	CERN Recommendations
Memory	1 GB	2 GB
Disk Size	16 GB	60 GB
CPU	1 GHz	2 GHz

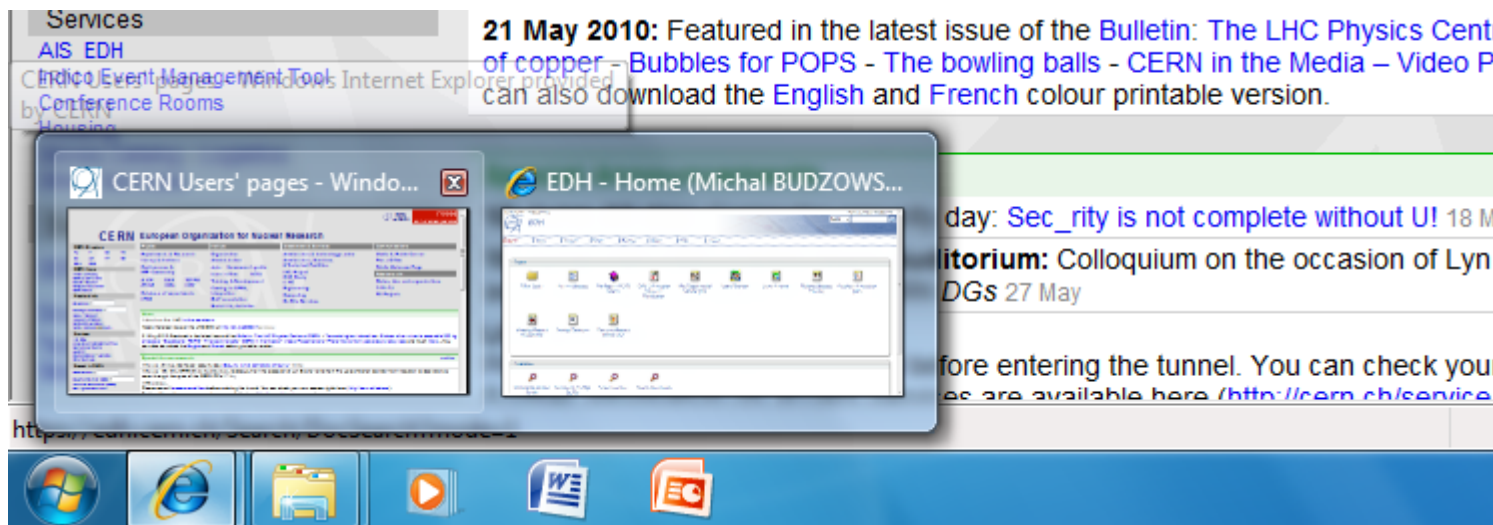
Windows 7 64-bit	Microsoft	CERN Recommendations
Memory	1 GB	4 GB
Disk Size	16 GB	60 GB
CPU	1 GHz	2 GHz



Part 2

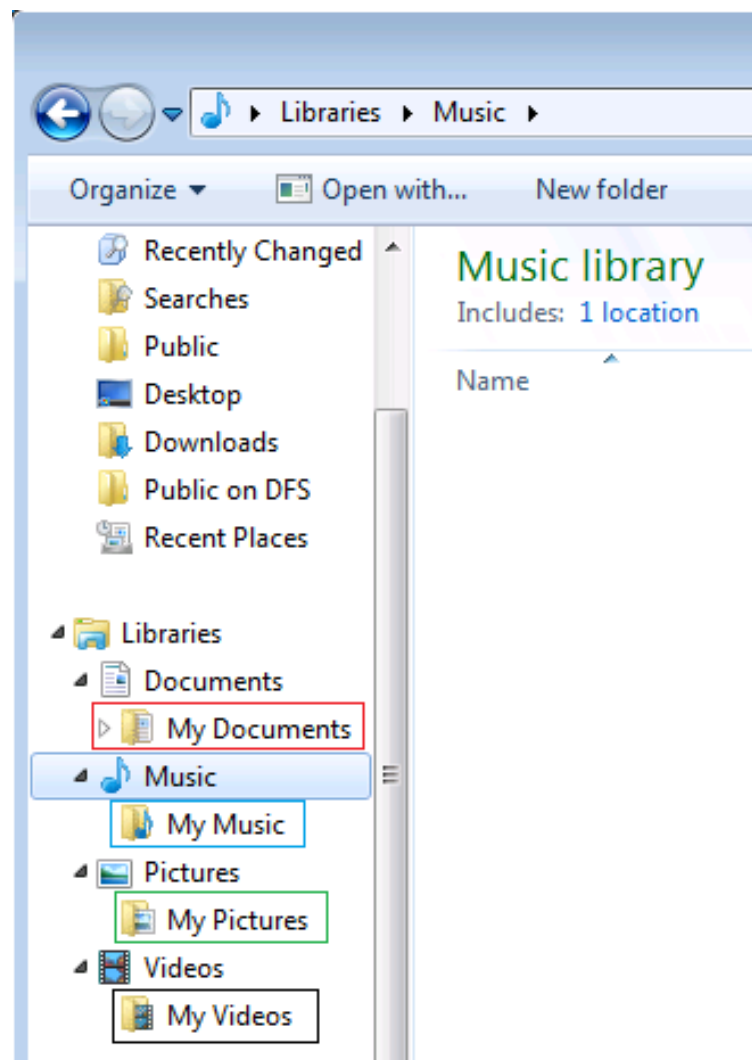
New Concepts

- Improved taskbar

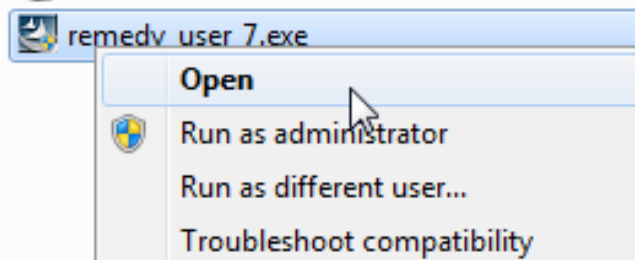


- Demo

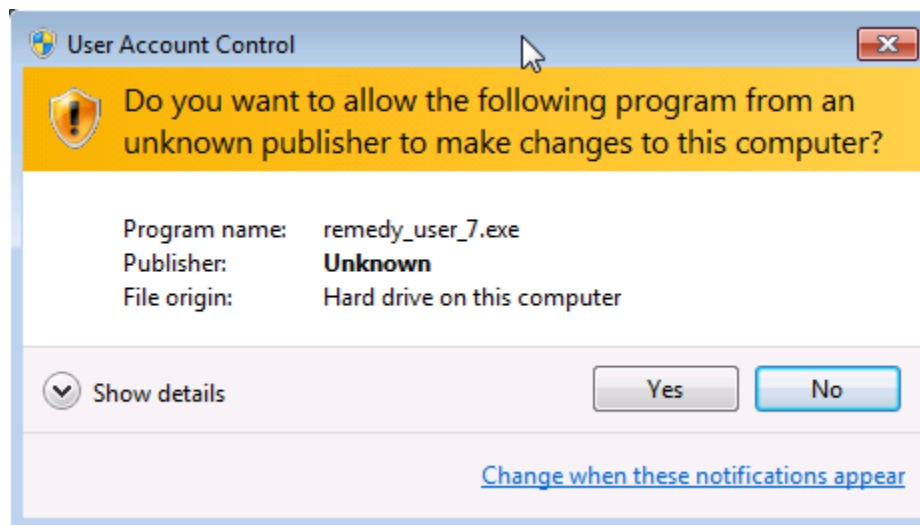
- ‘View’ of different locations for user files
- Four libraries by default:
„Documents”,
„Music”, „Pictures”
and „Videos”
- Additional locations may be easily added



- Mechanism to increase security
- By default applications run with standard user privileges



Admin
privileges
requested



- Search now works based on an index, which is updated in the background
- Faster for indexed locations
- Indexed by default:
 - Outlook contents
 - Menu Start
 - Offline files



- Save error message with Ctrl+C
- Snipping Tool



- New User Interface
 - Taskbar, Live preview, Pinning, Jump lists, Snapping windows, Search window, Flip, Flip-3d, Desktop peek, Shake
- Libraries
- User Account Control
- Search and Indexing
- Hints for communicating with Helpdesk





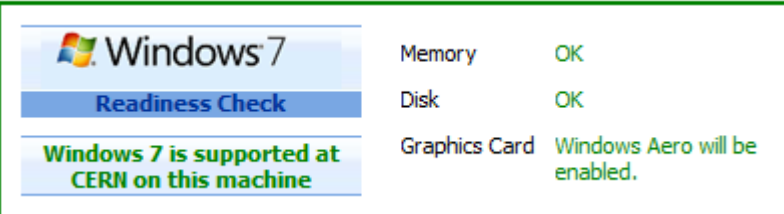
Part 3

Common questions

Q: How to check if Windows 7 will run on a given PC

A: Go to „Computer Account Status” page:

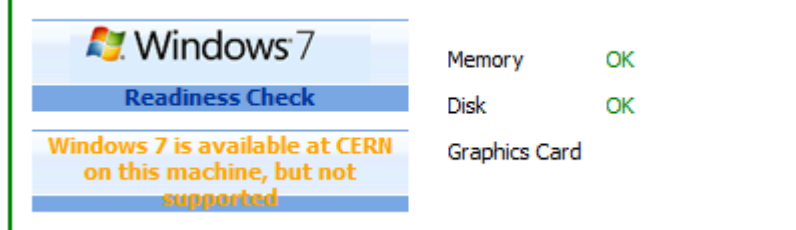
<https://www.cern.ch/win/Services/ComputerAccounts/ComputerAccountStatus7.aspx>



Windows 7
Readiness Check

Memory	OK
Disk	OK
Graphics Card	Windows Aero will be enabled.

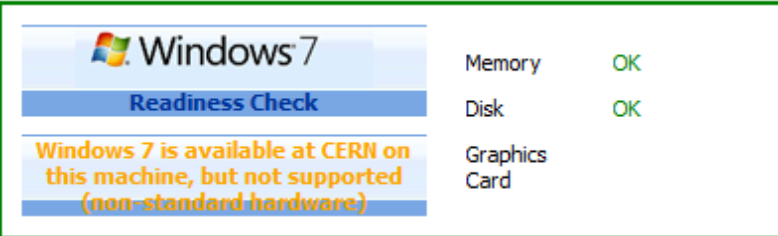
Windows 7 is supported at CERN on this machine



Windows 7
Readiness Check

Memory	OK
Disk	OK
Graphics Card	

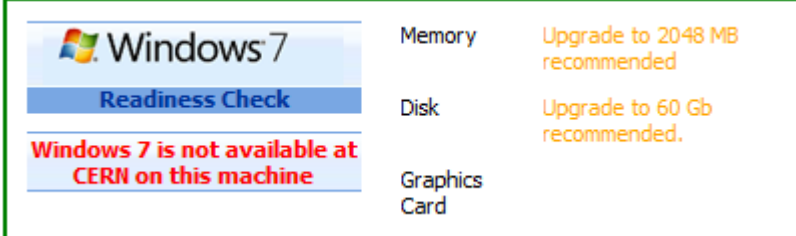
Windows 7 is available at CERN on this machine, but not supported



Windows 7
Readiness Check

Memory	OK
Disk	OK
Graphics Card	

Windows 7 is available at CERN on this machine, but not supported (non-standard hardware)



Windows 7
Readiness Check

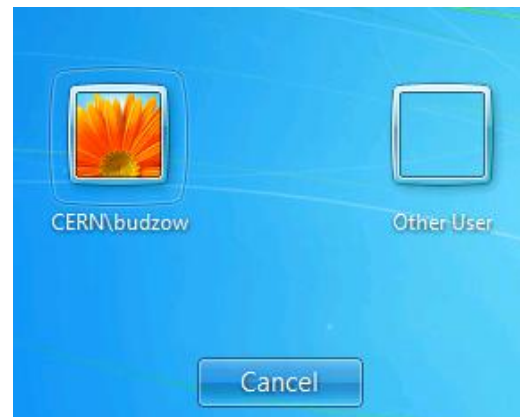
Memory	Upgrade to 2048 MB recommended
Disk	Upgrade to 60 Gb recommended.
Graphics Card	

Windows 7 is not available at CERN on this machine

1. Preferably ask helpdesk to do it
2. Alternatively follow standard installation procedure (Diane):
 1. Check if your PC is ready for Windows 7
 2. Make sure your PC is registered as „Windows” in the network database: <https://network.cern.ch/>
 3. Reboot your PC
 4. Press „F12” to start network installation
 5. Choose „Windows 7 Enterprise” from the choice of operating systems.

If Windows 7 is not listed in the list of operation systems, it means it is not available for your hardware.

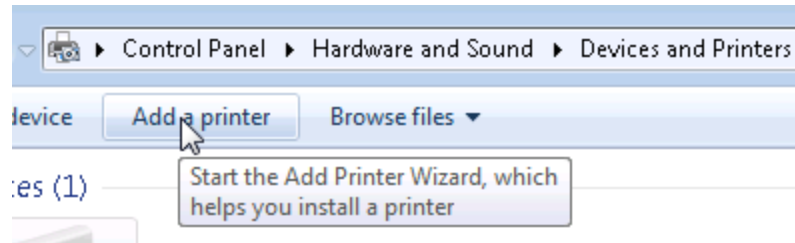
1. Press „Control-Alt-Del”
2. If the user you see is not your domain user, click „Switch user”
3. Enter your CERN account name and password.



- You can also use your CERN email address to log in
- Use the Account Status Page to check which credential you may use to log in: <http://cern.ch/login/account.aspx>

DEMO

1. Go to „Devices and printers”

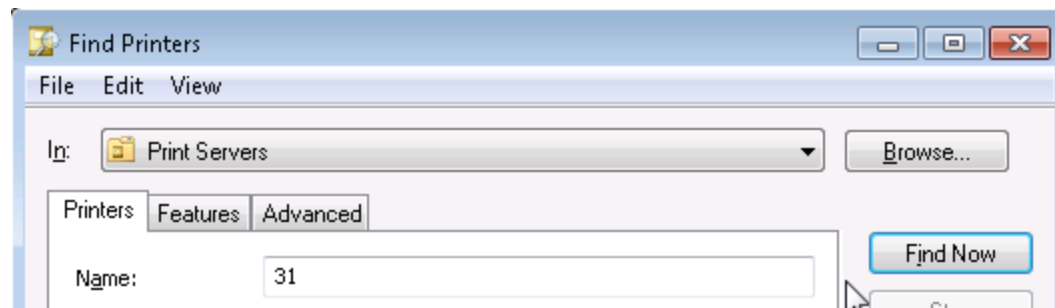


2. Select „Add a network printer”

→ Add a network, wireless or Bluetooth printer
Make sure that your computer is connected to the network, or that your Bluetooth or wireless printer is turned on.

3. Choose: → The printer that I want isn't listed and Browse for a printer

4. Enter your building number in the „name” field:

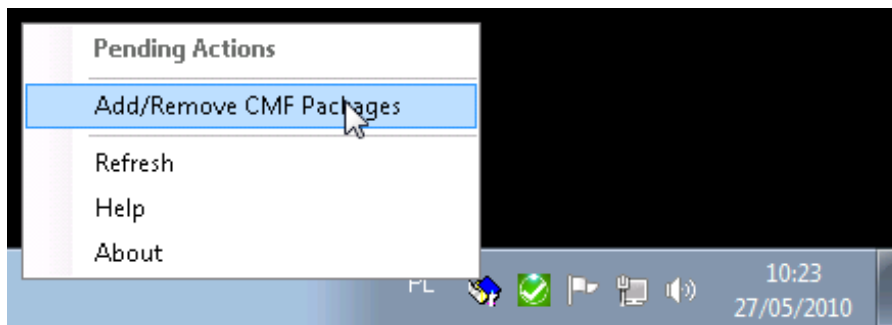


- Most applications are available on Windows 7
 - For detailed list of applications available on W7, check: <https://cern.ch/nice/Help/?kbid=010310>



DEMO

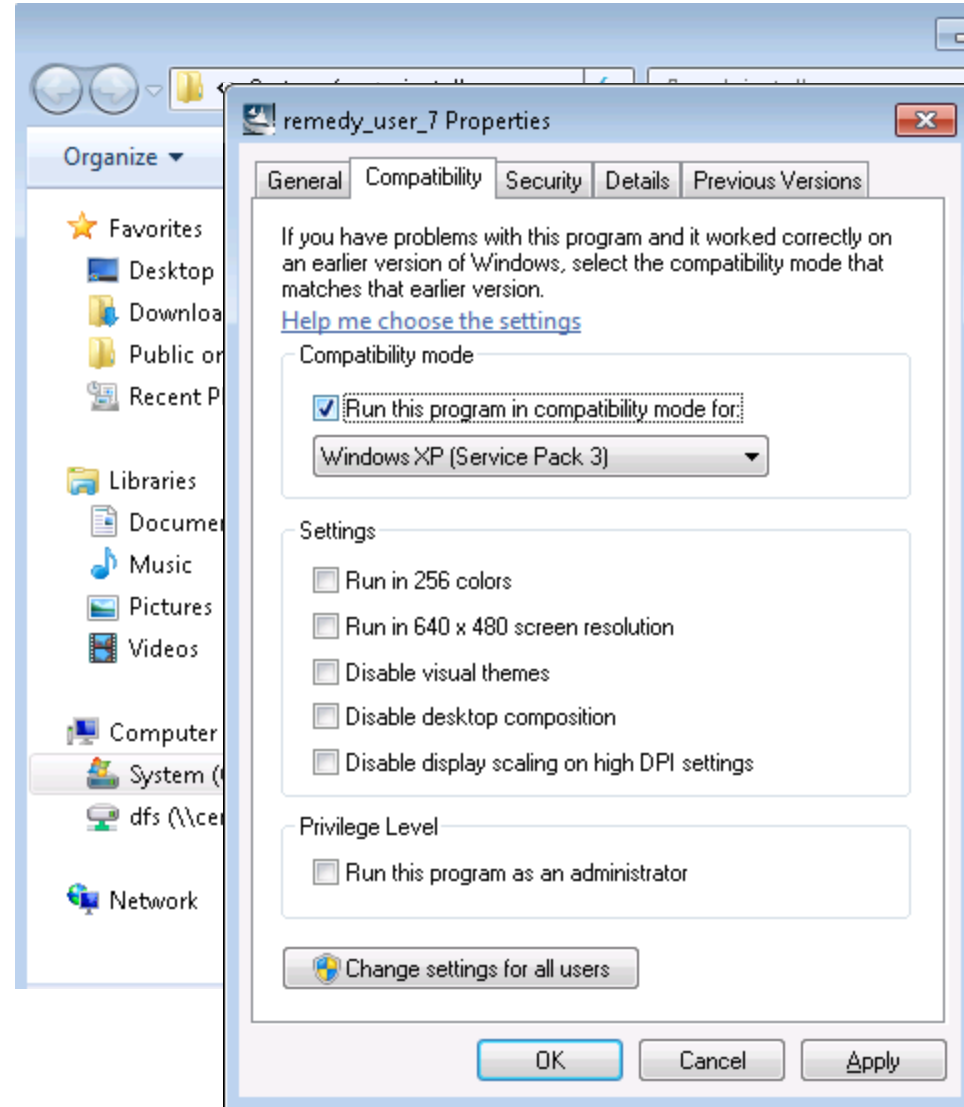
- First try „Add/remove CMF packages”:



Find your program on the list, select the checkbox and click „Save”.

- If your program is not listed, then it is not managed by CMF. In this case, you need to install it manually according to software vendor instructions

- Some older applications may be installed in compatibility mode with older versions of Windows



DEMO

- Use „Search” box from Menu Start
- Use „Search box in „Documents” folder

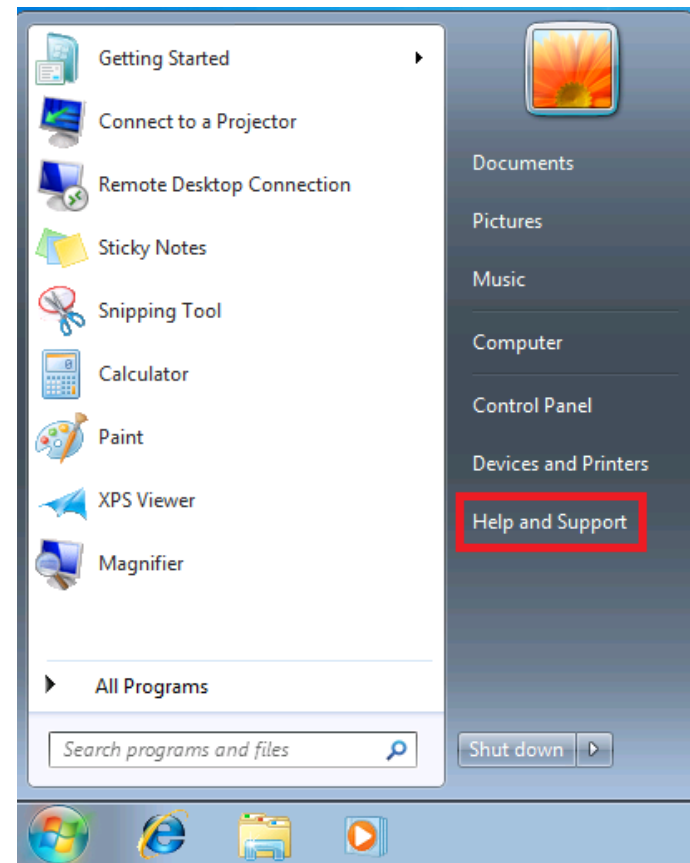


Basic suggestions:

- Make sure you have 2 GB of memory
- Disable transparency:
 1. Right-click desktop, click „Personalize”
 2. Click on “Window Colour”
 3. Untick the „Enable transparency” checkbox
- Disable Aero:
 1. Right-click desktop, click „Personalize”
 2. Choose „Windows 7 Basic” theme and click „OK.”



- Complete documentation for Windows 7 at CERN: <https://cern.ch/nice/Help/?fdid=5>
- Help and Support



- A half-day course on Windows 7
- 21 June, 2010: Get the most of Office 2007!
- 23 June, 2010: Profitez bien de Office 2007!
- Further details registration at:
<https://cern.ch/winservices/Help/?kbid=170115>



