

New Building for MTE's kicker system (367)

Presentation 24.09.19

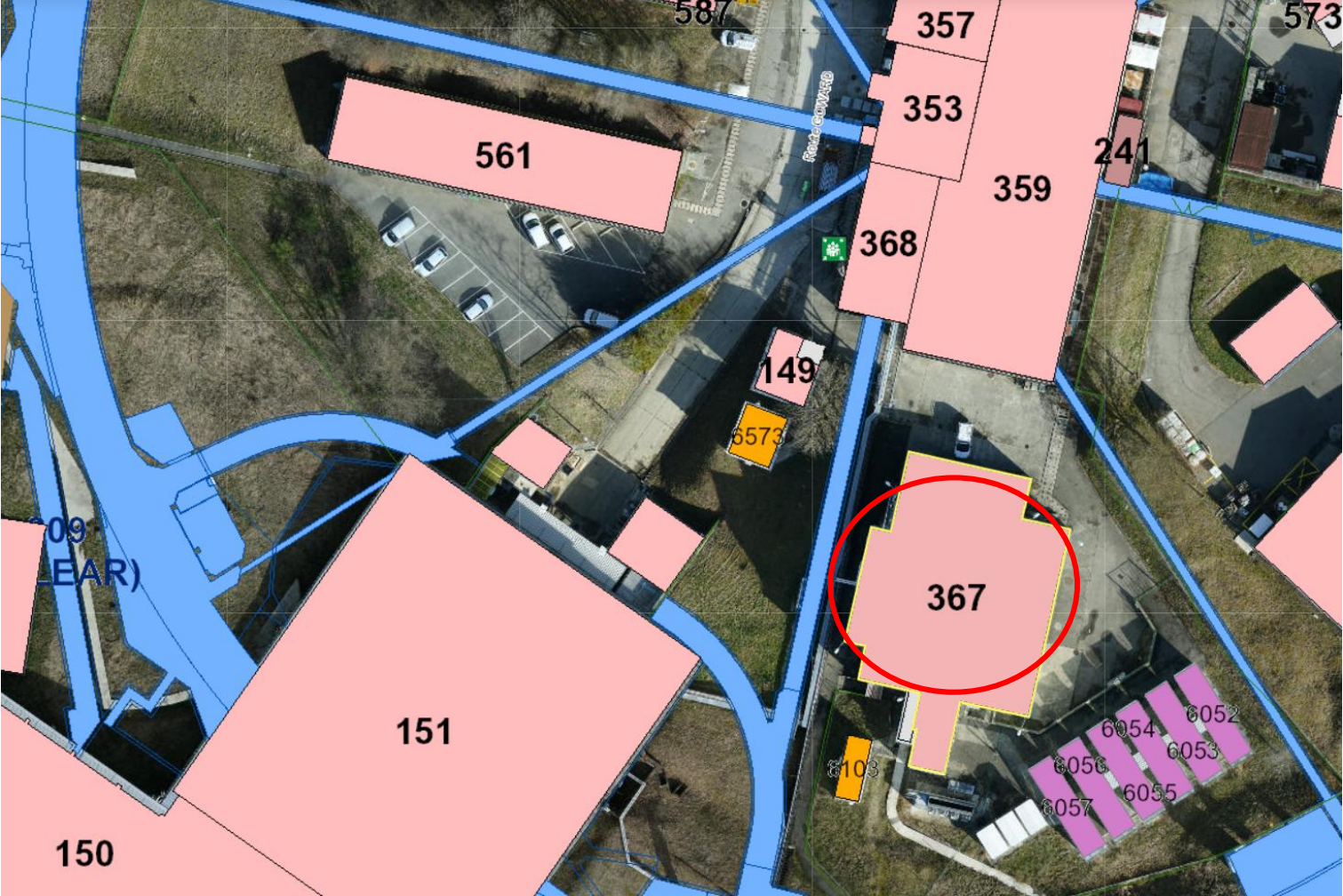
Summary

- Introduction
- MTE's Kickers' System Location
- MTE's Kickers' equipment - B367
- MTE's Kickers' System Constraints
- HV Cables involved
- New Location with last configuration
- Some Pictures
- Planning
- Project's structure
- Conclusion

Introduction

- Motivation - POPS's Project
 - Save money
 - Needs the space in the B367 occupied by the ABT's Kickers' System and so free this volume.

MTE's Kickers' System Location



MTE's Kickers' equipment - B367



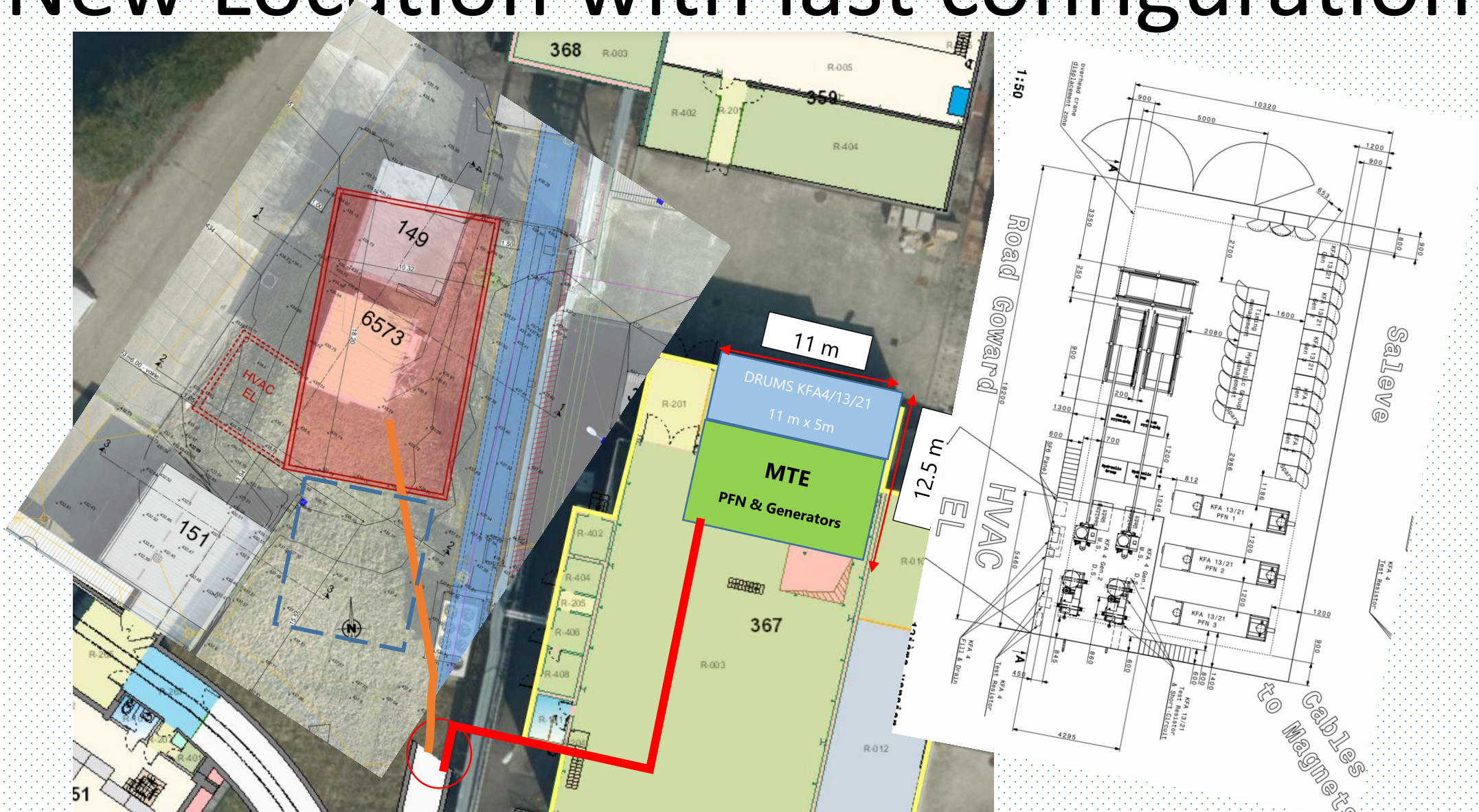
MTE's Kickers' System Constraints

- Length of the HV Cable – Big impact delaying the HV pulses on the magnets
- Mandatory
 - Keep the existing HV cables (saving $\sim > 1$ MCHF) and at the same length
 - Find a free location close to the PS ring – PR.SD04; PR.SD13; PR.SD21

HV Cables involved- KFA 4-13-21



New Location with last configuration



Picture from Intersection B367 - Route Goward



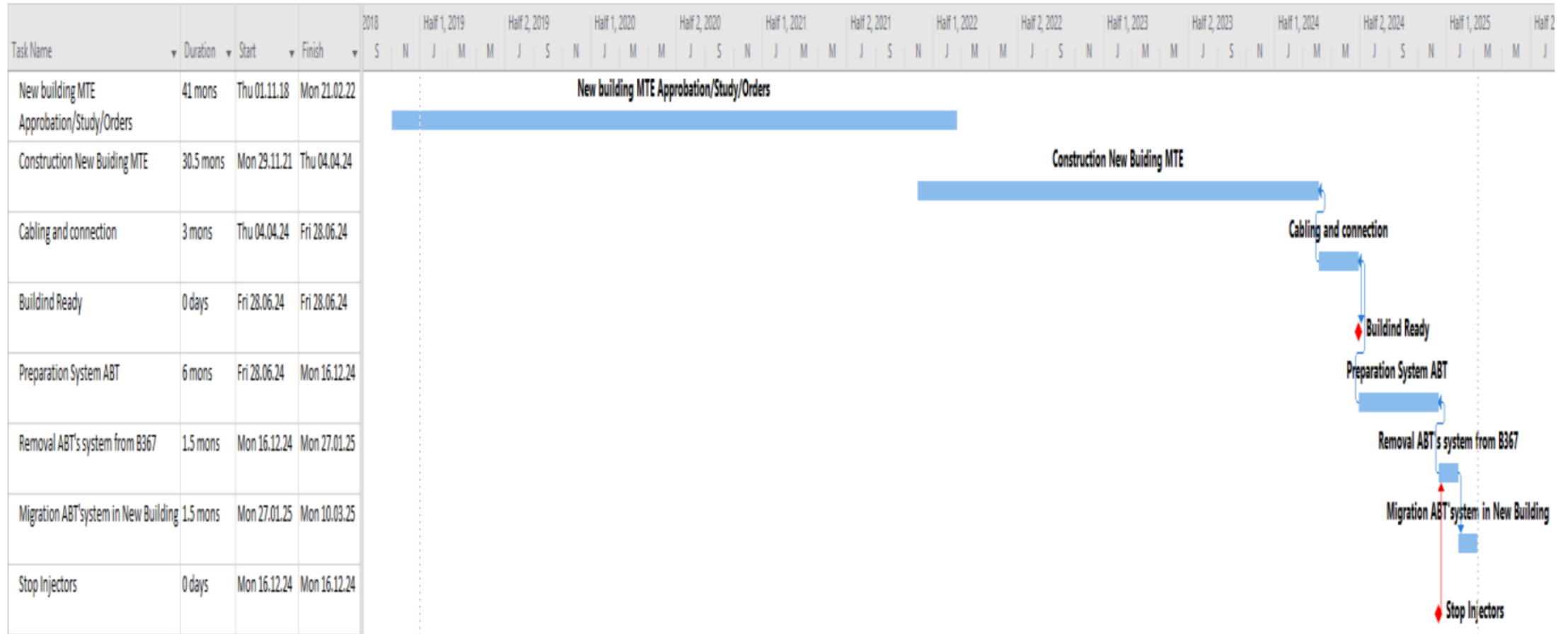
Picture from Route Goward



Output of existing HV Cables to B367

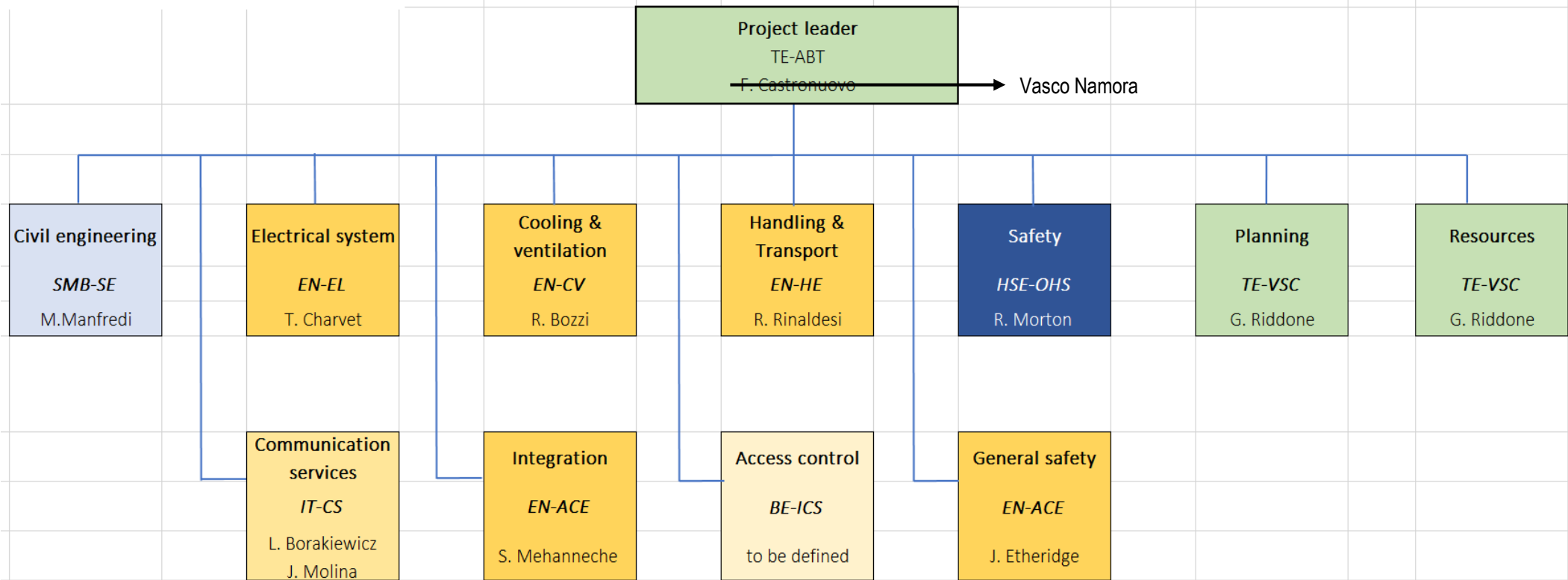


Planning



Project's structure

MTE kicker building - Organisation chart



Conclusion

- Milestone of the New building ready with all services – June 2024
- In order to prepare properly and achieve the milestone defined the removal of barrack and the building 149 required to be managed quite soon in this project.