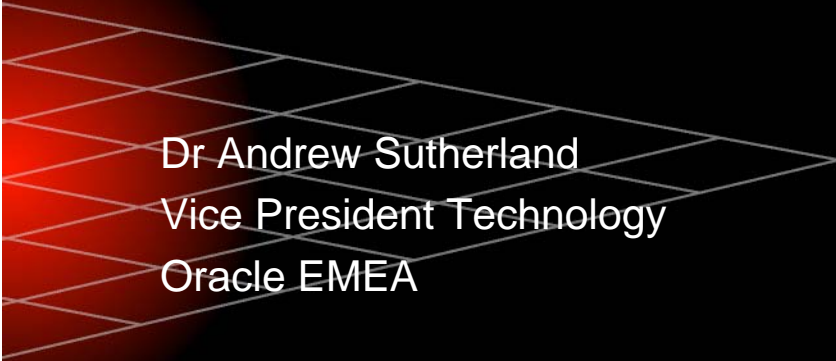


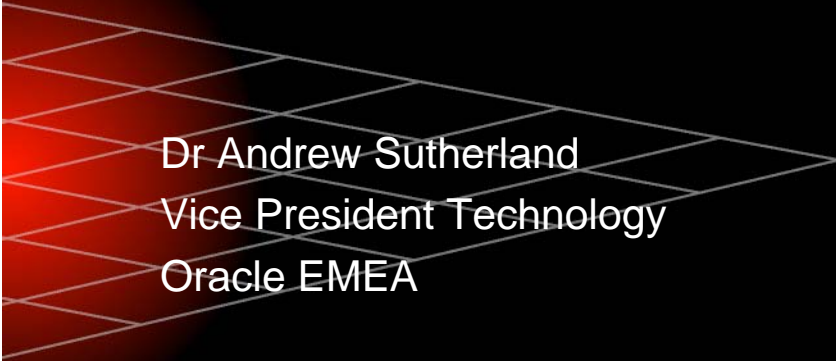
The Evolution of Computing



Dr Andrew Sutherland
Vice President Technology
Oracle EMEA

ORACLE

Why on earth is Oracle here?

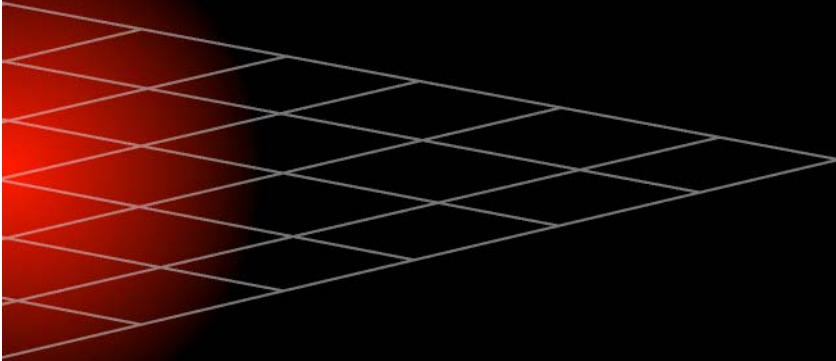


Dr Andrew Sutherland
Vice President Technology
Oracle EMEA

ORACLE

Grid? Who said Grid?

“Grid Computing”	1,390,000 (up from 580,000)
“David Beckham”	680,000 (up from 229,000)
“Scottish Football Stars”	8 (static)



Evolution of computing

- The “Brico” processing engine
- The “Brico” process engine
- Sensor Based Data Input
- Human Based Data Input
- Security and Privacy

Evolution of computing

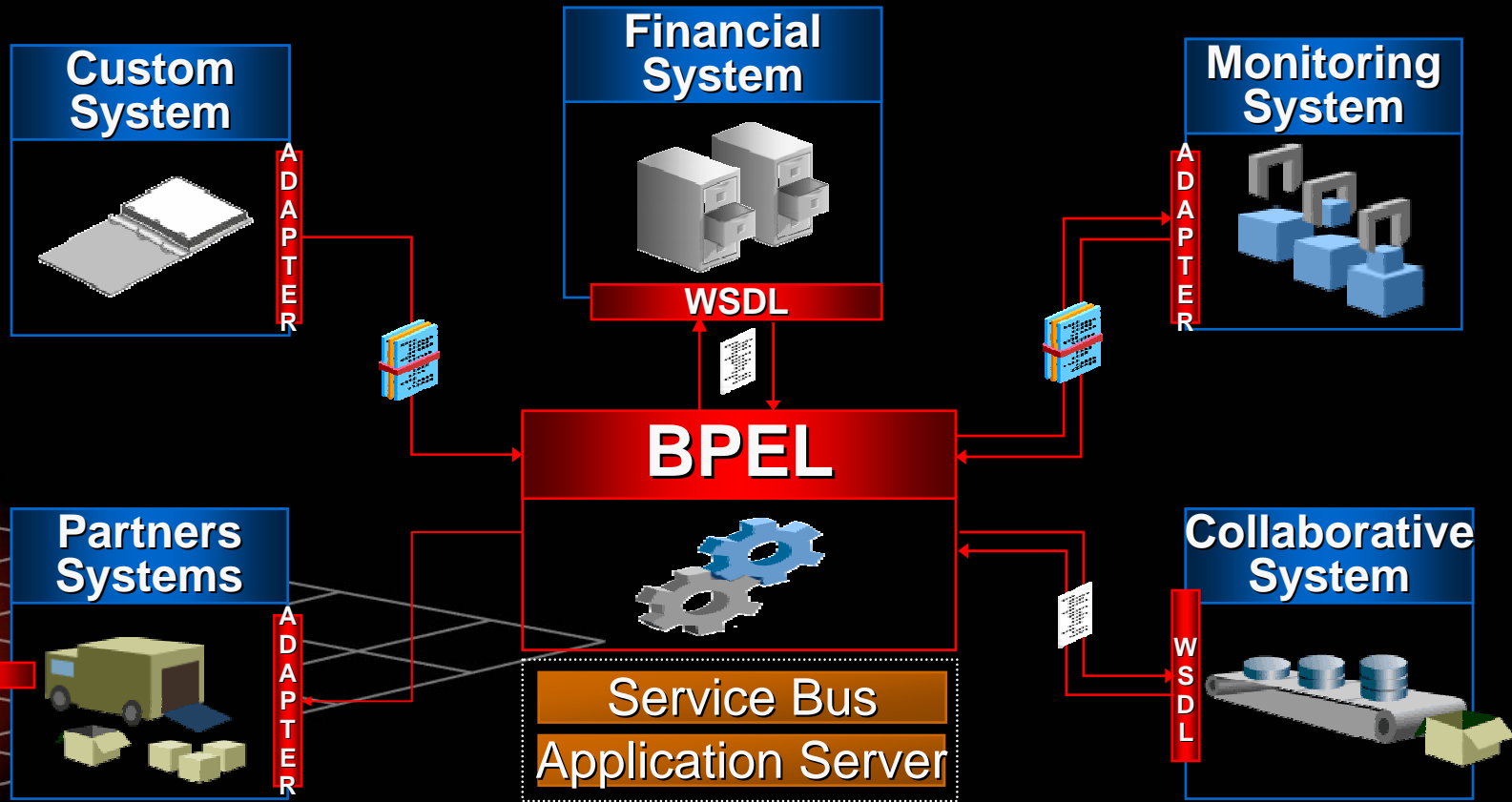
- The “Brico” processing engine
 - Exploiting low cost processing power
 - Scale at low cost
 - Intelligent
 - Self configuration
 - Self tuning
 - Manageable

Evolution of computing

- The “Brico” processing engine
- The “Brico” process engine
 - Standardisation at Process Level (business)
 - Orchestration in Hub
 - Declarative Configuration
 - Data in Hub

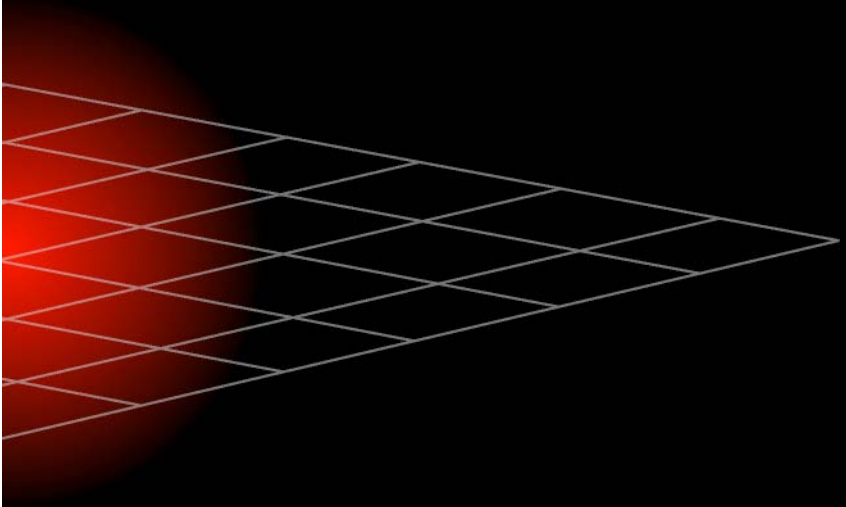
Orchestrate Services

BPEL



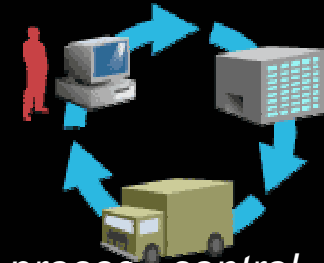
Evolution of computing

- The “Brico” processing engine
- The “Brico” process engine
- Sensor Based Data Input



Sensor based Computing

Fully Automated Communications



At Work

- *monitoring, diagnosis, (field) service, sorting, tracking and tracing, process control, identification, authentication, authorization ...*
(Retail, Hi-Tech, Pharma, Transport, Telco, Government, Utilities etc.)
- *reporting and alert triggers initiated by enabled machines*
(Vending Machines, Copiers, Medical Systems, Elevators etc)

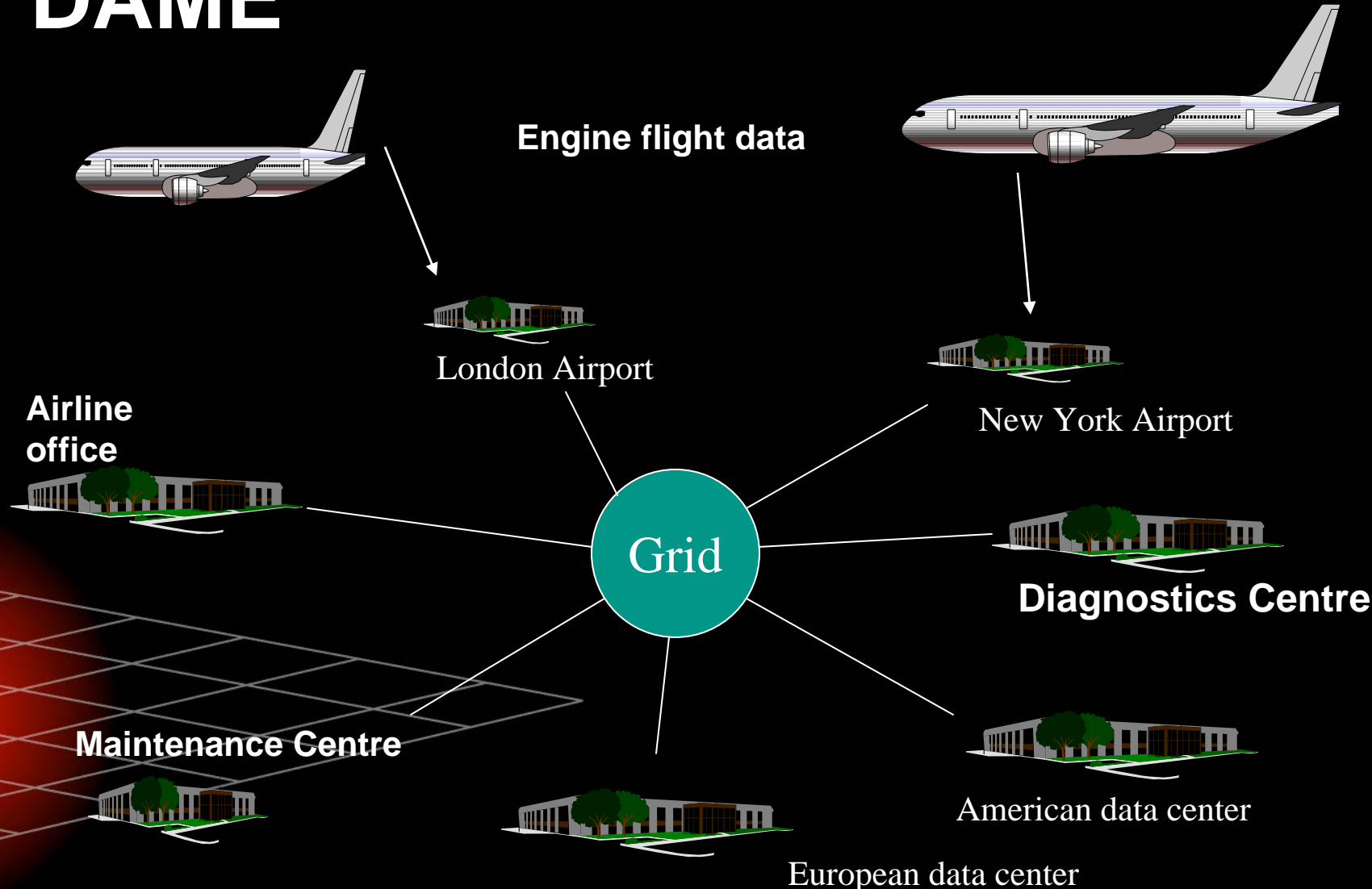
At Home

- *Remote support of IP-enabled (broadband) devices*
(Digital Television, Mobile Connected Solutions, Appliances etc)
- *New products and services delivered by Telcos and Utilities*
(Smart Refrigerator, Interactive TV, Home Security, Remote Support etc)

On the Way

- *Intelligence for Passengers, OEM's and Dealers of vehicles and for businesses operating in Travel & Transport*
(e.g. Fleet Management, Diagnostics, Rental, Toll, Luggage, Safety etc)

DAME



A Distributed Diagnostics Environment for Maintenance

Evolution of computing

- The “Brico” processing engine
- The “Brico” process engine
- Sensor Based Data Input
 - Scaling Data Volumes
 - ULDB
 - Scaling Transaction Throughput
 - Optimising software, adding service layers

Evolution of computing

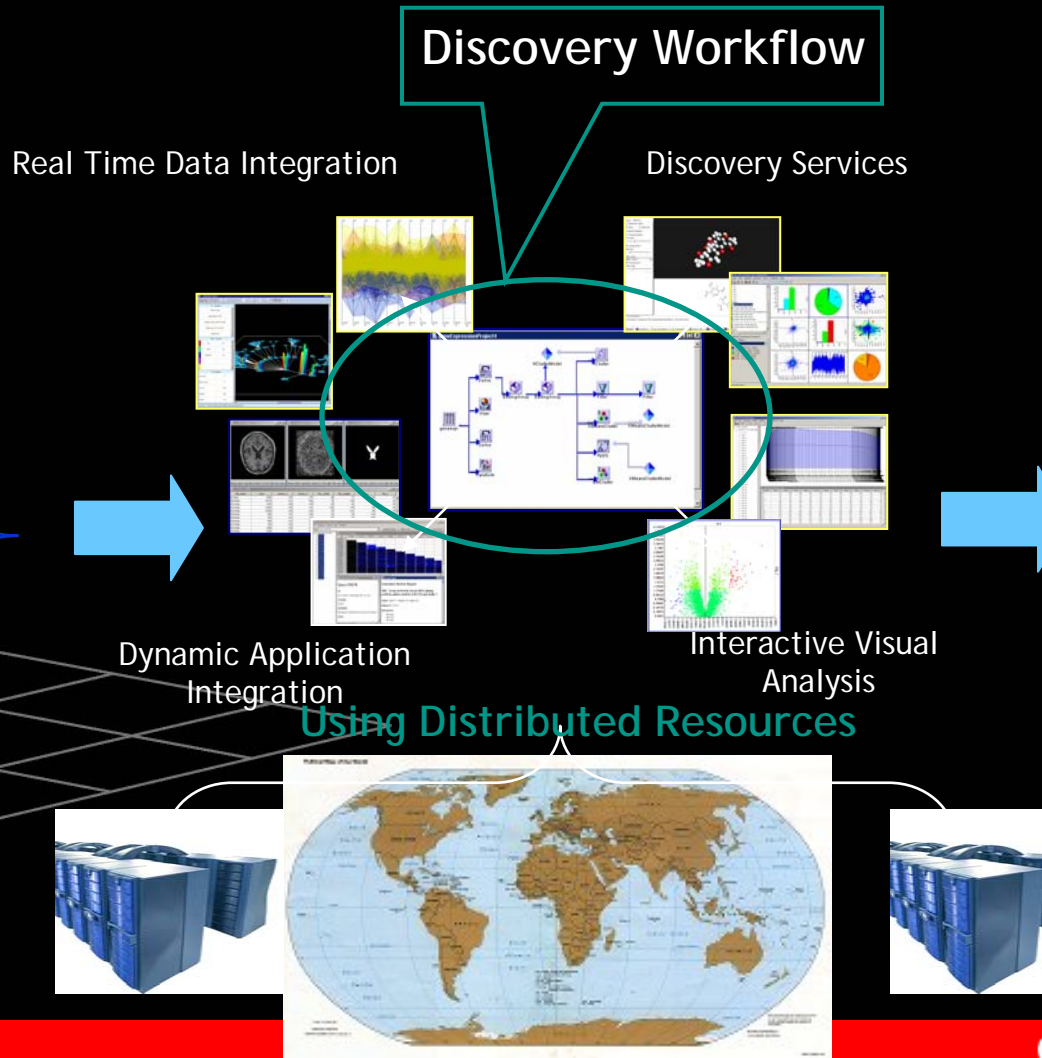
- The “Brico” processing engine
- The “Brico” process engine
- Sensor Based Data Input
- Human Based Data Input
 - Unstructured Information Management
 - Collaborative Software
 - Any device
 - Personalised
 - Summarised

Discovery Net

In Real Time

Scientific Information

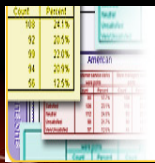
Scientific Discovery



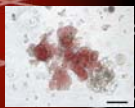
Literature



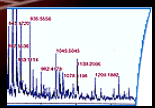
Databases



Operational Data



Images



Instrument Data

Discovery Workflow

Real Time Data Integration

Discovery Services

Dynamic Application Integration

Interactive Visual Analysis

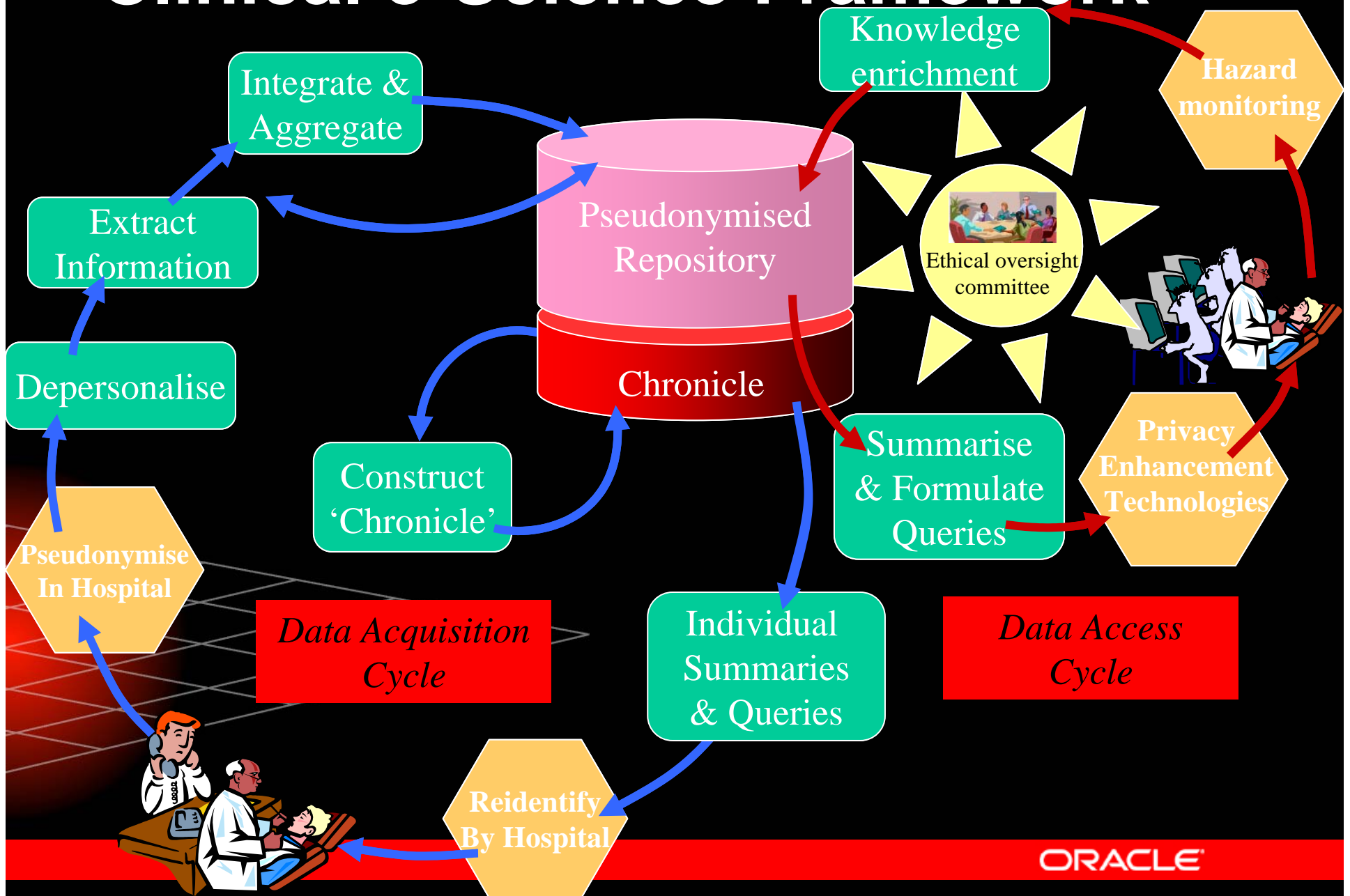
Using Distributed Resources

ORACLE

Evolution of computing

- The “Brico” processing engine
- The “Brico” process engine
- Sensor Based Data Input
- Human Based Data Input
- Security and Privacy

Clinical e-Science Framework



Evolution of computing

- The “Brico” processing engine
- The “Brico” process engine
- Sensor Based Data Input
- Human Based Data Input
- Security and Privacy

Evolving More Rapidly

- Enterprise Grid Alliance & GGF
- CERN Openlab
- More Opportunities for collaboration?

