



GoToGrid



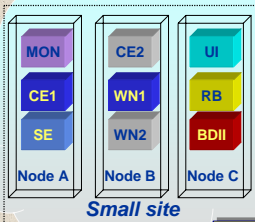
A Web-Oriented Tool in Support to Sites for LCG Installations

G. Diez-Andino, O. Keeble, P. Nyczyk, A. Retico, M. W. Schulz, I. Tkachev, A. Usai.
CERN, Geneva, Switzerland

"I am totally new to the Grid. How do I organize my site?"

Grid Assistant

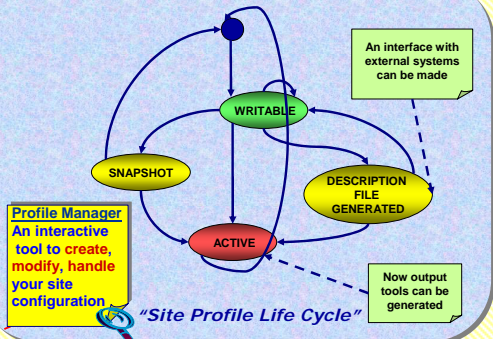
Interactive first-level help system. What people might want to read (but is not obliged to)



Small site

Security

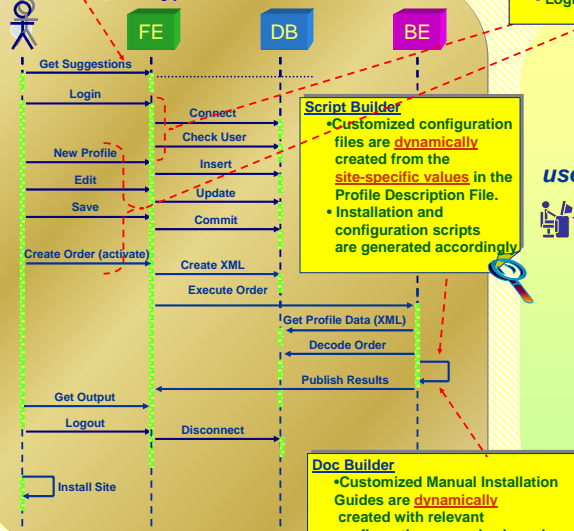
Profiles can be accessed after:
- Registration
- Login



Profile Manager
An interactive tool to create, modify, handle your site configuration

"Site Profile Life Cycle"

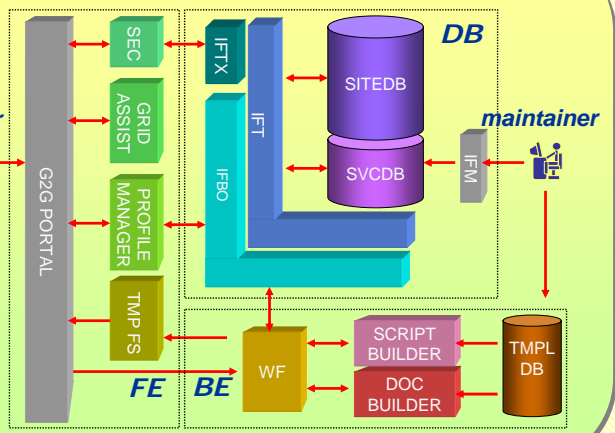
"A Typical User Scenario"



Script Builder
• Customized configuration files are dynamically created from the site-specific values in the Profile Description File.
• Installation and configuration scripts are generated accordingly

Doc Builder
• Customized Manual Installation Guides are dynamically created with relevant configuration examples based on the Profile Description File.

The G2G Architecture



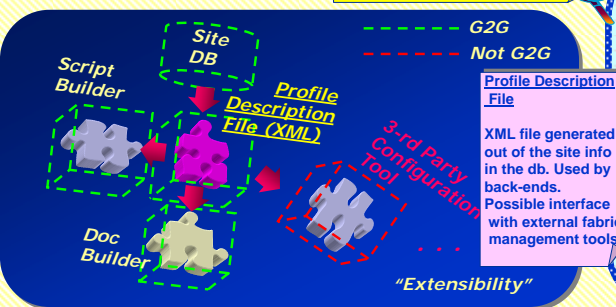
GoToGrid (G2G)

The GoToGrid application allows the dynamical creation of individual installation guides, examples and scripts according to the site local settings and to the desired distribution of Grid services upon physical nodes.

G2G provides several added-value features with different scope and scale: There are features addressed to ALL sites (first-level assistance and hints by Grid Assistant, Profile Manager editing tool); to SMALL sites (customized configuration files and scripts to make manual installation easier); to LARGE sites (Documentation to configure fabric management tools) and features addressed to Support Groups (centralized repository to query for site configuration).

Relevant site-dependent configuration information is entered by the Site Administrator and stored in a database. The required information deals mostly with "local" parameters (site topology and organization).

Site relevant data are structured into individual "site profiles" that can then be converted in an XML interchange format. G2G uses internally the profile data to provide the above mentioned added-value tools.



Profile Description File
XML file generated out of the site info in the db. Used by back-ends. Possible interface with external fabric management tools.

This work has been partially funded by "Istituto Nazionale di Fisica Nucleare", Rome, Italy and by "Ministerio de Educación y Ciencia", Madrid, Spain



Total Sites: 78
Total CPUs: 7269
Total Storage: 6558 (TB)

September 10 2004

