



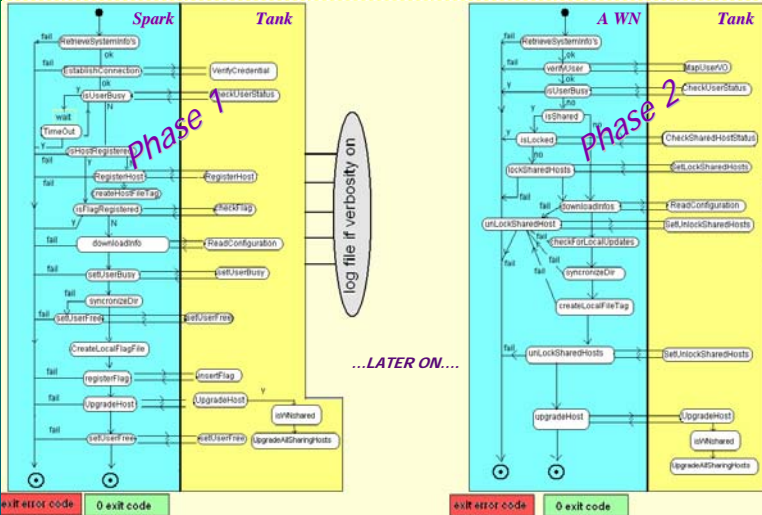
What more?



- Possibility to manage farms with shared/non shared/mixed file system topology
- Possibility to trigger an installation process directly from a UI (without job submission)
- Possibility to have a modular system (opportunity to choose the authentication mechanism, the back end DB, the underlying local installation tool: RPM, Pacman, DAR, tarballs, etc.)
- A multiple-approach installation scheme: asynchronous (cron job) and synchronous (a client or a daemon running on WNs)
- A LCG independent system: the whole system (server and client instance) ran successfully on a portable PC with RH 7-1 and no Grid components installed!
- Possibility to manage disk space and eventually dependencies if required by the experiments (not yet implemented)

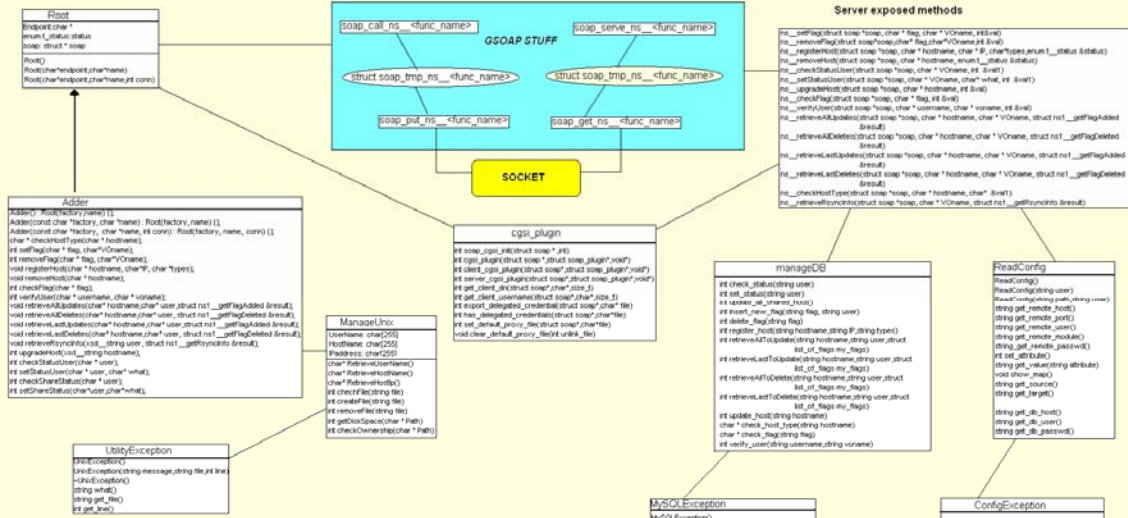
Activity Diagram

Some results...



In this figure we show the sequence of actions performed by the system: phase 1 refers to the installation Phase 2 to the propagation to other WNs

Class Diagram



Total Sites: 78
 Total CPUs: 7269
 Total Storage: 6558 (TB)

September 10 2004

