

Comments on planning

K. Foraz

Outline



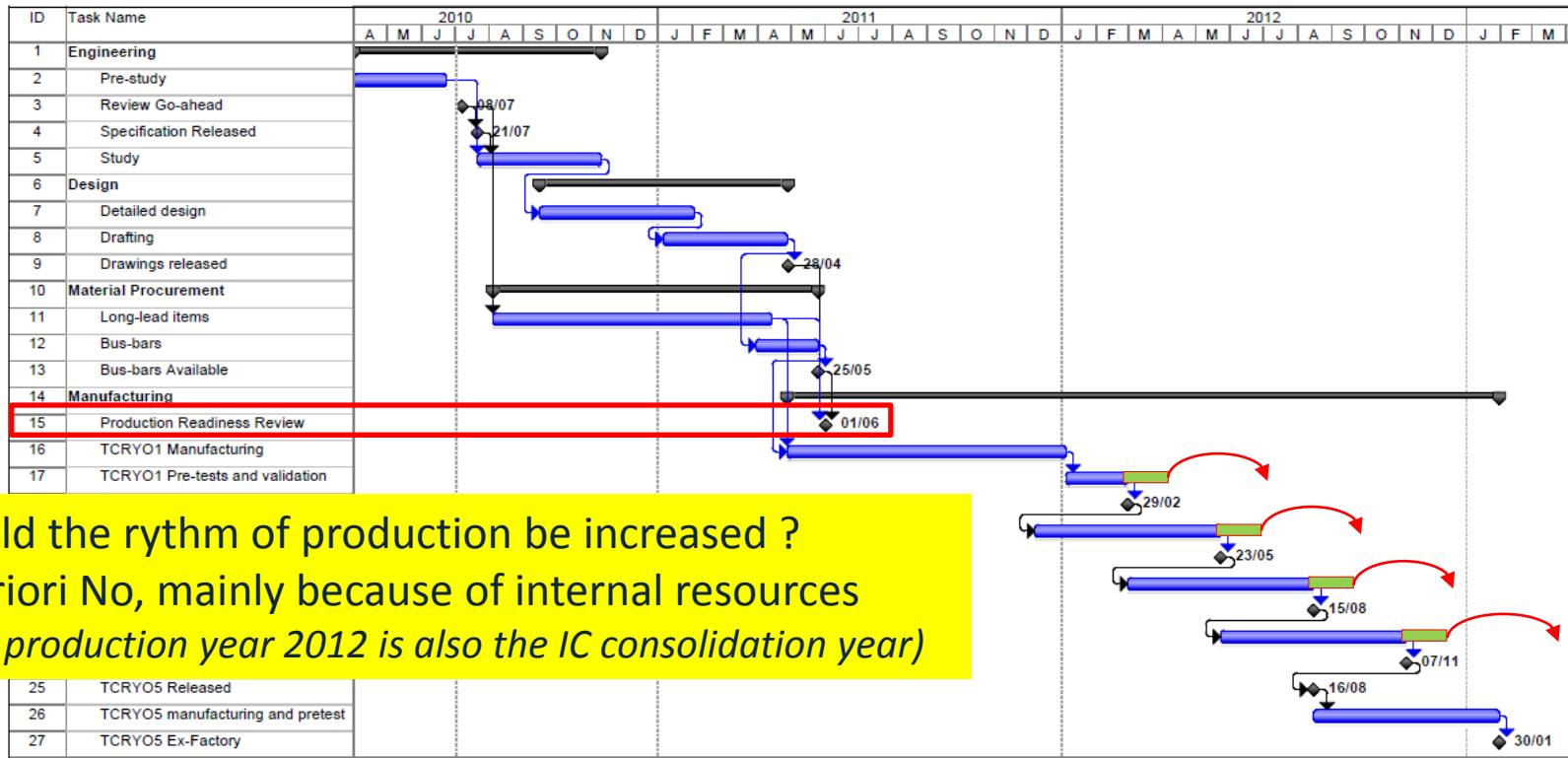
- Production schedule
- Installation schedule – 2012-2013
- Conclusion

Production schedule - Tcryo

1. No safety margin

- With 10% margin just on production : last collimator available for installation end of March 2013 !!

2. Not taking into account final assembly and tests ~ 5-6 weeks (—)



Could the rythm of production be increased ?
 A priori No, mainly because of internal resources
 (the production year 2012 is also the IC consolidation year)

Production schedule - others



- Shortened CC
 - Engineering studies finished end of 2010
 - CC available end of October 2012 (with a 10% margin on production: mid Dec.)
- Cryogenics extension
 - Should be available end of 2011
 - Integration still to be done
- DSLC shortening
 - With a design finished in May next year
 - Available for IC in August 2011

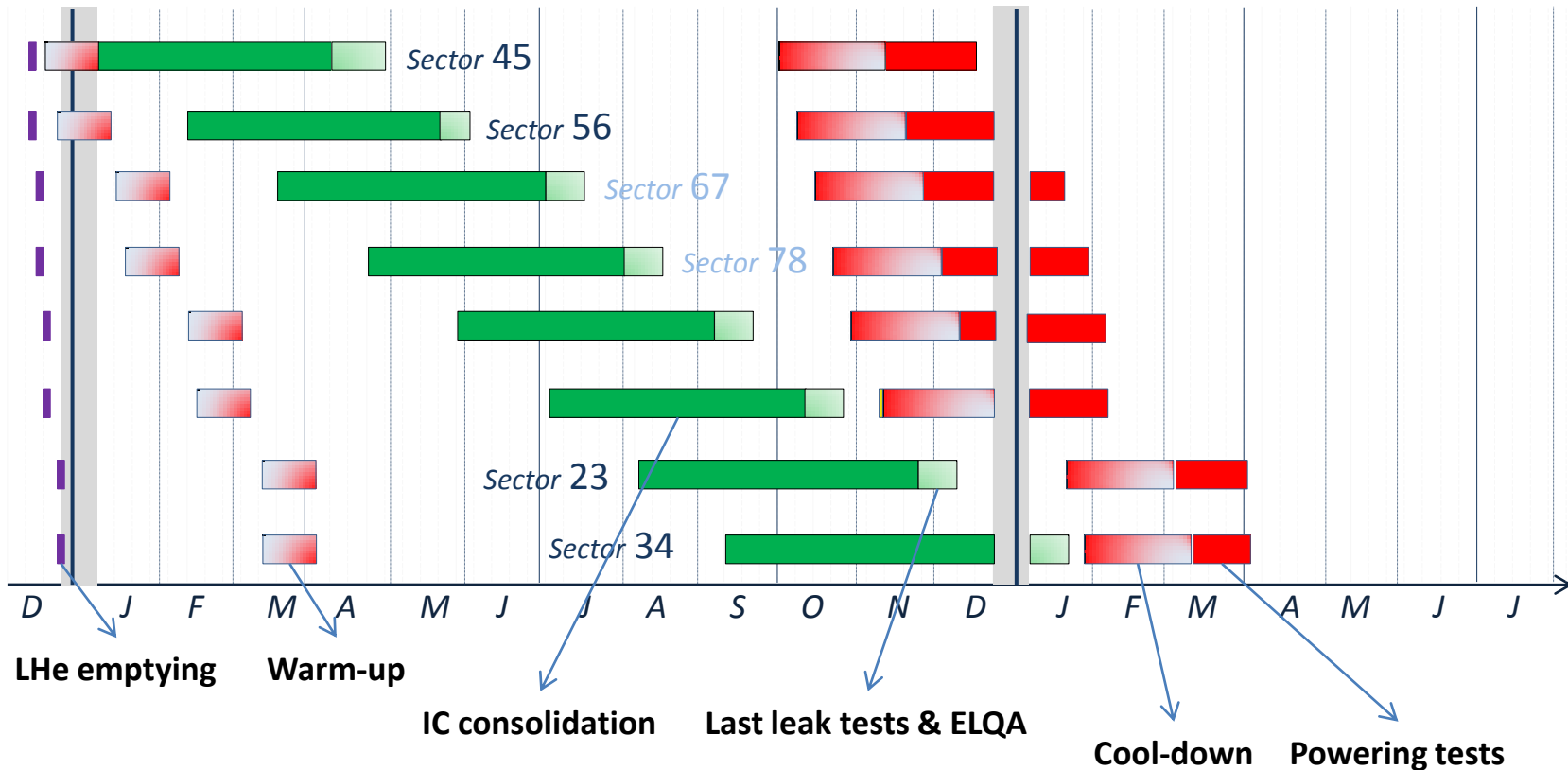
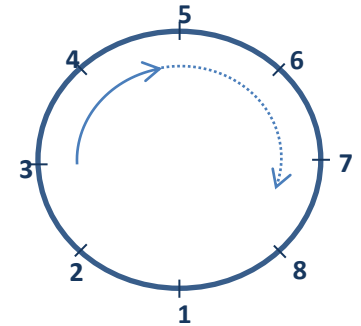
Installation Schedule 2012-2013



IC consolidation schedule

Several scenari under studies: from where to start ?

~cell 12R3 (but then no pilot sector for eventual tests) / sector 45



Installation Schedule 2012-2013



Collimation & IC consolidation – several scenarios

– No dedicated IC team for collimation

- Start of the shutdown in December 2011
- Start of the shutdown postponed to minimize the effect of collimation

– With a dedicated IC team for collimation

Do not forget it is not only the team, but the training, the supervision and the material

- Start of the shutdown in December 2011
- Start of the shutdown postponed to minimize the effect of collimation

Installation Schedule 2012-2013

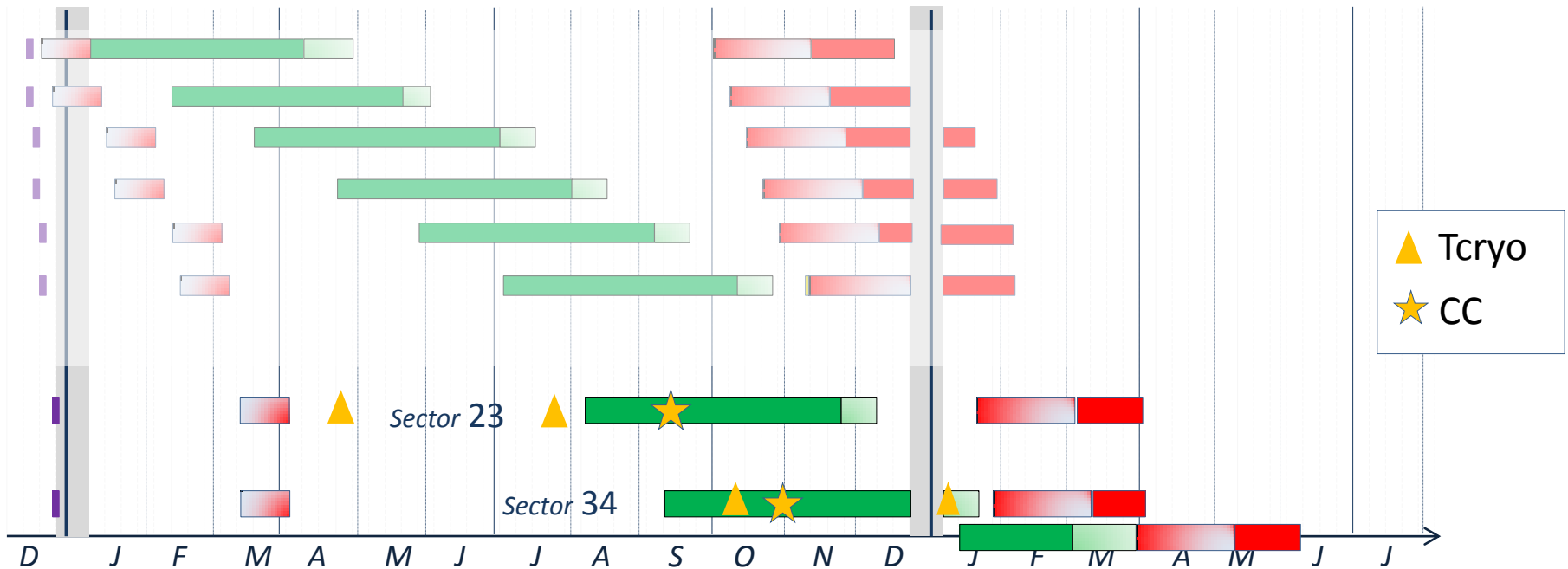


No dedicated IC team for collimation – Start in December 2011

In theory, the IC Train would have to wait 3.5 months !!!

(I don't think that these teams would wait !!! They will jump point 3, and come back later)

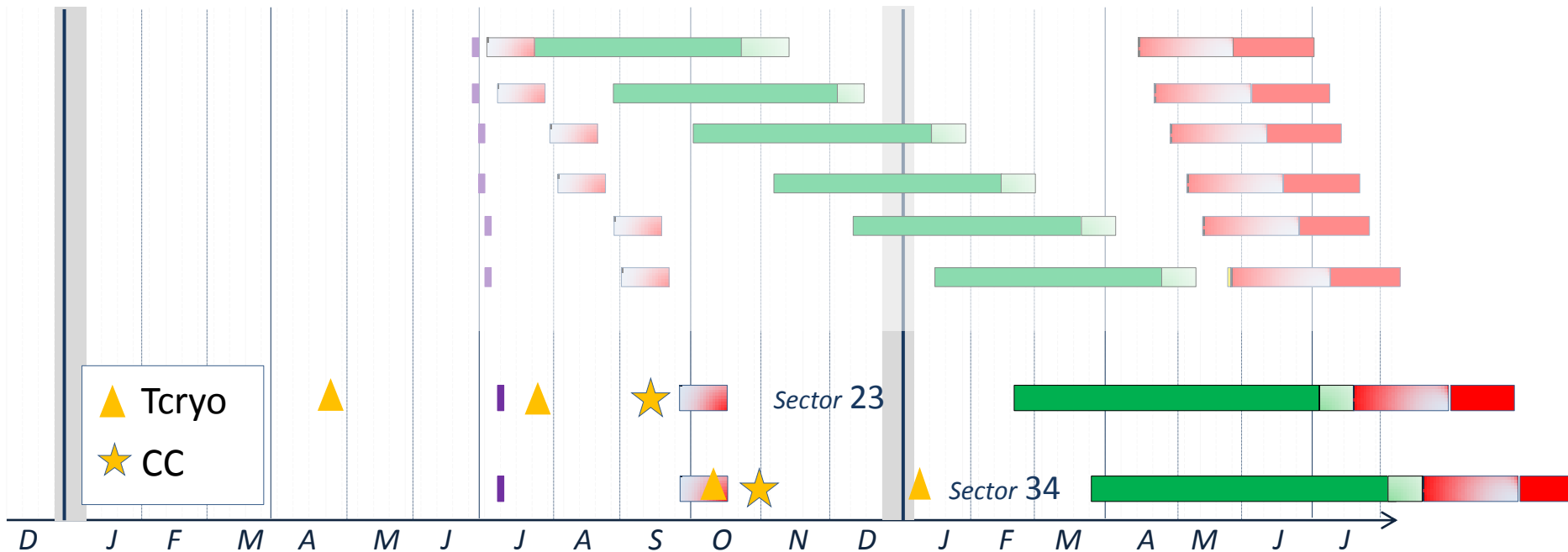
+~ 2 months



Installation Schedule 2012-2013

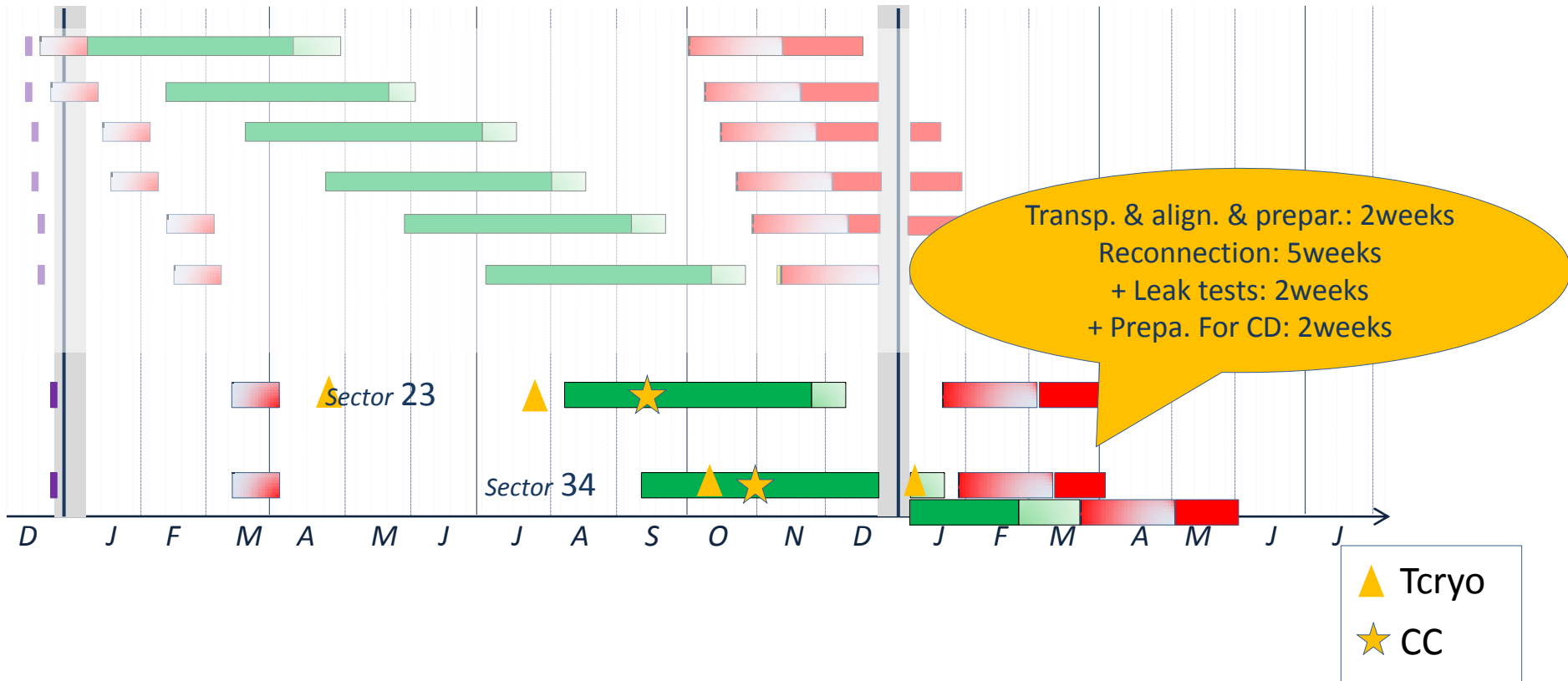


No dedicated IC team for collimation – Start in July 2012
(2 months + 3 months of possible delay during production)
Shut-down from July 2012 to October 2013
~ 1 month additional time will be needed (more work)



Installation Schedule 2012-2013

Dedicated IC team for collimation – Start in December 2011
+ 2 months



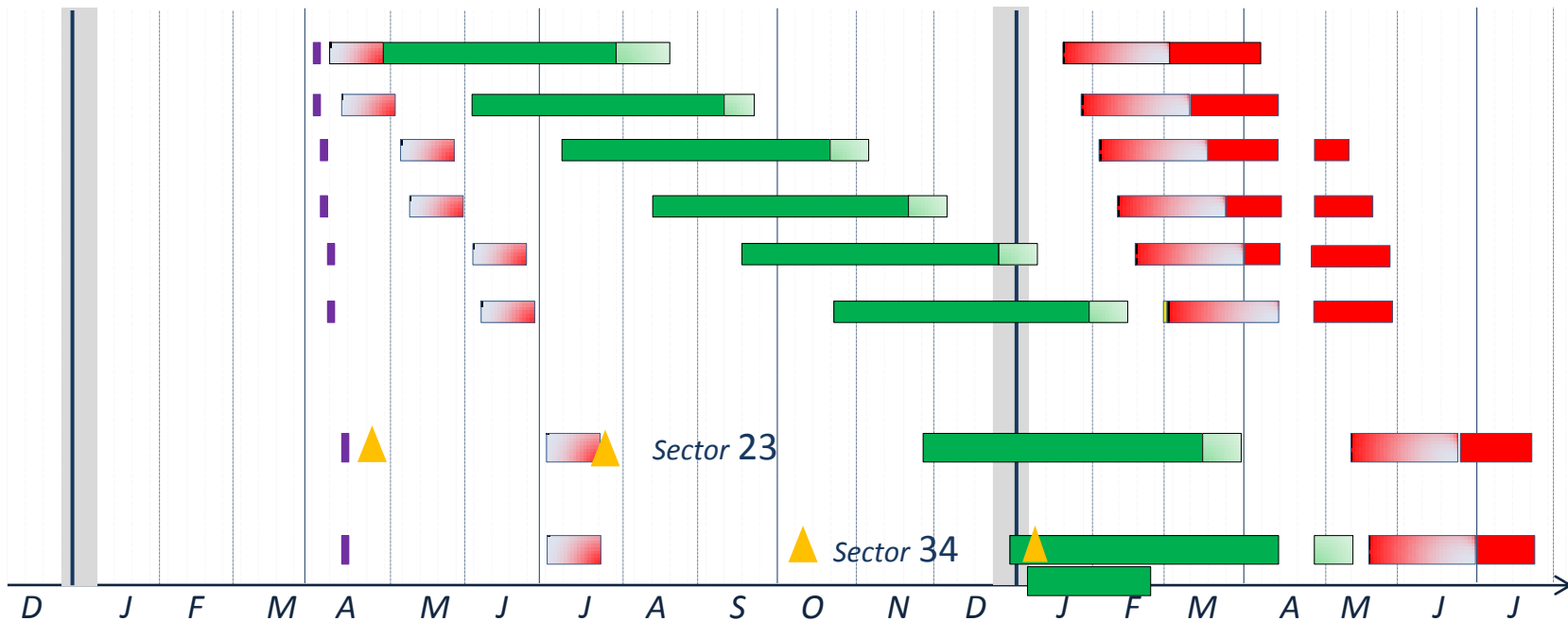
Installation Schedule 2012-2013



Dedicated IC team for collimation – Start in April 2012

No impact on duration

(impact on maintenance plan and on long-term schedule shall be analyzed)



Conclusion



- Tight production schedule (Tcryo and CC) would be compensated by delaying the start of the shut-down
- Several scenarios studied:
 - No dedicated team for IC collimation
 - Start of shutdown in December 11: +2 mths
 - Start of shutdown postponed to July 12 : + ~1mth
 - Impact on maintenance plan and long term schedule to be studied
 - 3 months margin on collimation production
 - With a dedicated team for IC collimation
 - Start of shutdown in December 11: +2 mths
 - Start of shutdown postponed to April 12 : No impact
(or even better in July 11)
- Question: according to Ralf, with IR3 collimation a factor 10 can be gained in Intensity. Will it be painful to wait for next shutdown to install Tcryo in IR3?