

Issues/Successes this week:

Fairshare investigations

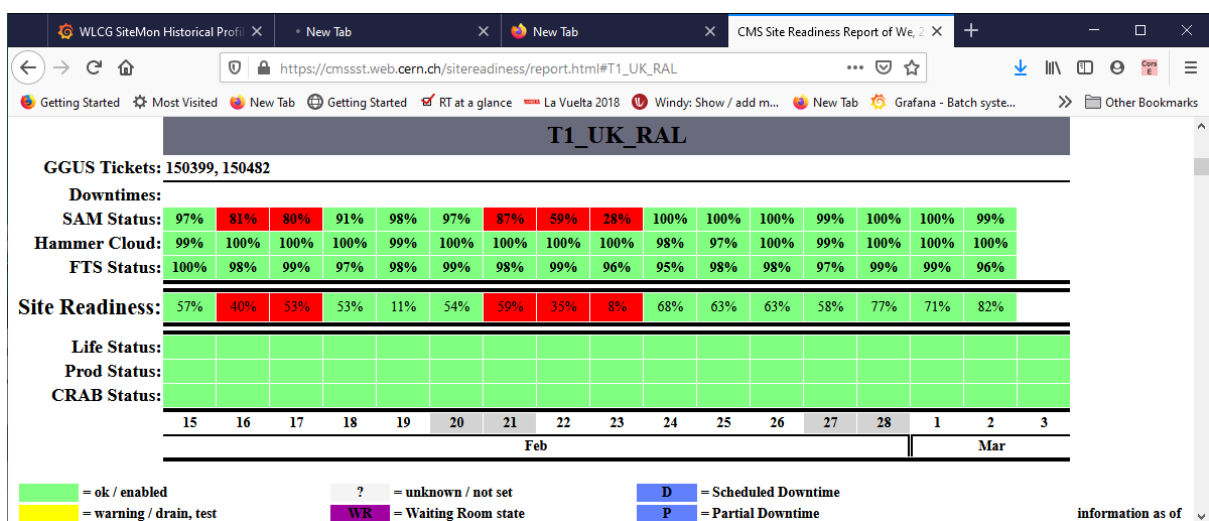
Open Tickets:

Ticket-ID	Type	VO	Site	Priority	Responsible Unit	Status	Last Update	Subject	Scope
150762	USER	dteam	RAL-LCG2	urgent	NGI_UK	in progress	2021-03-01 10:22:00	Accessing multi-VO Rucio	EGI
150713	USER	dteam	RAL-LCG2	less urgent	NGI_UK	in progress	2021-02-25 10:37:00	VO names longer than three characters on multi-VO Rucio	EGI
150679	TEAM	lhcb	RAL-LCG2	top priority	NGI_UK	in progress	2021-03-01 15:29:00	Low number of LHCb running jobs at RAL	WLCG
150653	TEAM	lhcb	RAL-LCG2	urgent	NGI_UK	on hold	2021-03-02 12:15:00	FTS error: libX509SciTokensIssuer.so not found	WLCG
150580	USER	other	RAL-LCG2	urgent	NGI_UK	in progress	2021-02-26 10:44:00	Multi-VO Rucio server at RAL - Documentation	EGI
150567	USER	other	RAL-LCG2	urgent	NGI_UK	in progress	2021-02-18 10:33:00	Add gridpp VO to multi-VO Rucio instance	EGI
150482	USER	cms	RAL-LCG2	very urgent	NGI_UK	in progress	2021-03-03 10:29:00	enabling AREX service at ARC-CE(s) at (T1_UK_RAL)	WLCG
150399	USER	cms	RAL-LCG2	less urgent	NGI_UK	on hold	2021-02-11 08:57:00	WebDAV endpoint at RAL	WLCG
146651	TEAM	atlas	RAL-LCG2	urgent	NGI_UK	on hold	2021-02-16 17:37:00	singularity and user NS setup at RAL	WLCG
142350	TEAM	lhcb	RAL-LCG2	top priority	NGI_UK	on hold	2021-01-15 11:18:00	Proble accessing some LHCb files at RAL	WLCG

Closed tickets:

Ticket-ID	Type	VO	Site	Priority	Responsible Unit	Status	Last Update	Subject	Scope
150581	USER	other	RAL-LCG2	urgent	NGI_UK	solved	2021-02-25 15:54:00	Rucio file upload file upload Tier-1 ECHO store problem	EGI

CMS:https://cmsst.web.cern.ch/sitereadiness/report.html#T1_UK_RAL

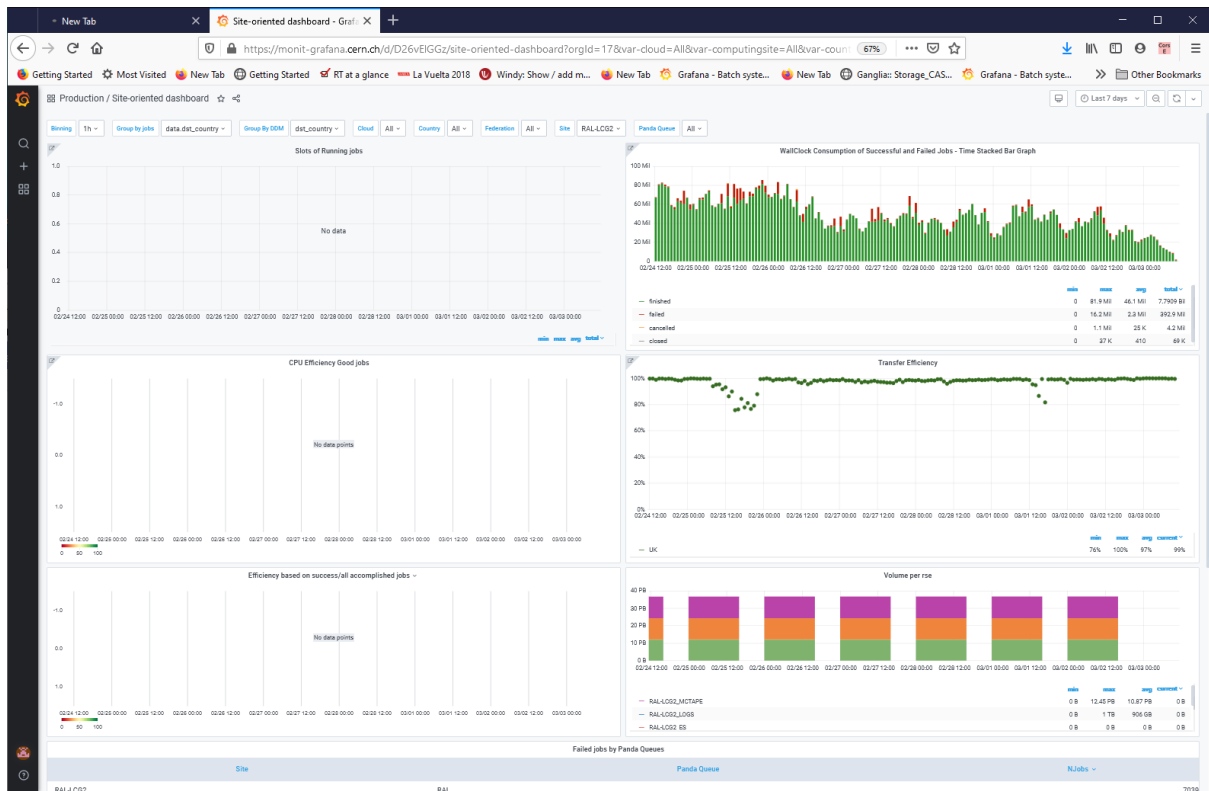


ATLAS:

<http://hammercloud.cern.ch/hc/app/atlas/siteoverview/?site=RAL-LCG2&startTime=2021-01-06&endTime=2021-01-13&templateType=isGolden>

Site Dashboard:

https://monit-grafana.cern.ch/d/D26vElGGz/site-oriented-dashboard?orgId=17&var-groupby_jobs=data.dst_country&var-groupby_ddm=dst_country&var-cloud=All&var-country=All&var-federation=All&var-site=RAL-LCG2&var-computingsite=All



LHCB:

https://monit-grafana.cern.ch/d/000000619/wlwg-sitemon-historical-profiles?orgId=20&from=now-30d&to=now&var-vo=lhcb&var-profile=LHCB_CRITICAL&var-dst_tier=1&var-dst_country=UK&var-dst_federation=All&var-dst_experiment_site=LCG.RAL.uk&var-service_flavour=ARC-CE&var-dst_hostname=All&var-recomputation=status

WLCG SiteMon Historical Profiles

https://monit-grafana.cern.ch/d/000000619/wlcg-sitemon-historical-profiles?from=now-7d&orgId=20&to=now&var-dst_country=67%

Getting Started | Most Visited | New Tab | Getting Started | RT at a glance | La Vuelta 2018 | Windy: Show / add m... | New Tab | Grafana - Batch syste... | New Tab | Ganglia: Storage_CAS... | Grafana - Batch syste... | Other Bookmarks

SiteMon / WLCG SiteMon Historical Profiles

VO | lhc - Profile | LHCB_CRITICAL - Tier | 1 - Country | UK - Federation | All - Site | LCG RAL uk - Flavor | ARC-CE - Hierarchy | All - Reconstructions | Status -

This dashboard shows the availability, reliability, and status computation from ETF tests. To use it:

1. Apply the desired selection using the filters on top (dashboard will also load faster).
2. Click on "Availability & Reliability", "Site Status", "Endpoint Status" or "Test Status" to see results. Scroll up/down for more results.

Availability & Reliability

Site +

Site	Availability	Reliability
LCG RAL uk	100.00%	100.00%

Site Status

Endpoint Status

Endpoint	Status
[LCG RAL uk] [ARC-CE] arc-ce-test02.gridpp.rl.ac.uk	OK
[LCG RAL uk] [ARC-CE] arc-ce01.gridpp.rl.ac.uk	OK
[LCG RAL uk] [ARC-CE] arc-ce02.gridpp.rl.ac.uk	OK
[LCG RAL uk] [ARC-CE] arc-ce03.gridpp.rl.ac.uk	OK
[LCG RAL uk] [ARC-CE] arc-ce04.gridpp.rl.ac.uk	OK
[LCG RAL uk] [ARC-CE] arc-ce05.gridpp.rl.ac.uk	UNKNOWN

STFC Tier 1