

Issues/Successes this week:

Helpdesk upgrade issues with certain e-mail addresses (lcg-support still outstanding which means GGUS tickets don't appear in RT helpdesk)

CMS production work stopped (by VO) whilst investigation into low efficiency jobs. Analysis jobs taking up slack for the moment.



Tier-1 Network upgrade

Joining the LHCONE is part of the larger Tier-1 Network upgrade that we are doing. The upgrade plan was presented at the technical meeting on January 29th[1] and it remains on schedule. The next update is scheduled at the LHCOPN-LHCONE meeting on the 23rd March[2]. Access to the machine room is expected to be allowed this week. The cabling for the Tier-1 network is expected to be completed between the 16th and 19th March. The CTA network is currently being configured.

[1]<https://indico.cern.ch/event/996031/contributions/4185620/attachments/2180652/3683446/Tier1Network20210129.pdf>

[2] <https://indico.cern.ch/event/983436/>

Open Tickets:

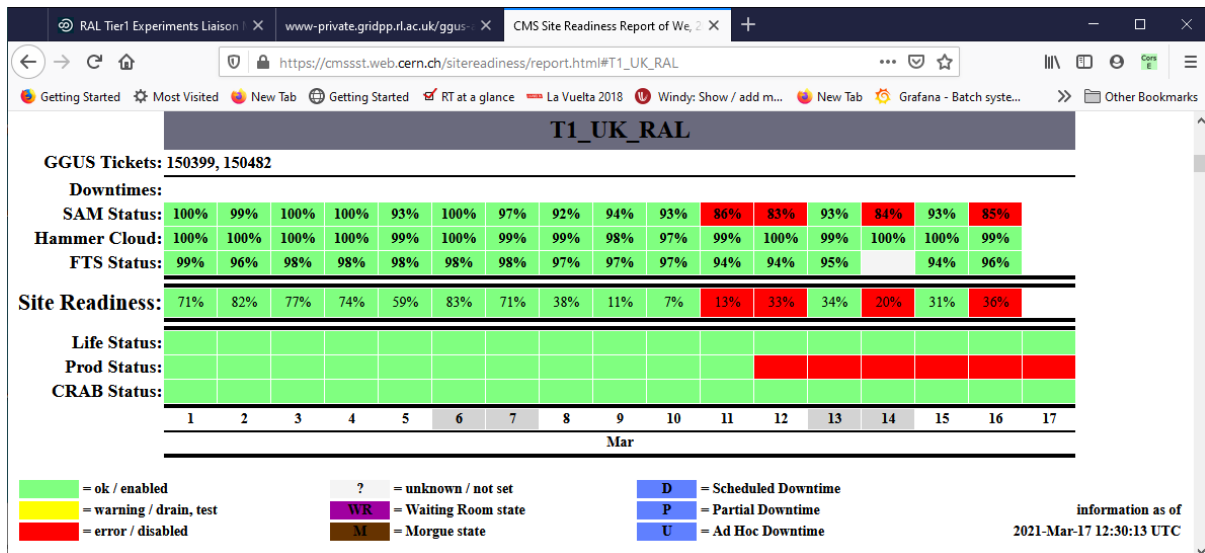
Ticket-ID	Type	VO	Site	Priority	Responsible Unit	Status	Last Update	Subject	Scope
150898	TEAM	lhcb	RAL-LCG2	very urgent	NGI_UK	in progress	2021-03-17 11:24:00	Some files cannot be downloaded: bad data was encountered	WLCG
150892	USER	none	RAL-LCG2	less urgent	NGI_UK	in progress	2021-03-16 12:47:00	VOMS-Admin queries from storage-gridmap1.gridpp.rl.ac.uk	EGI

150888	USER	dteam	RAL-LCG2	less urgent	NGI_UK	in progress	2021-03-09 14:27:00	pscheduler not to be running on lcgps01.gridpp.rl.ac.uk	EGI
150762	USER	dteam	RAL-LCG2	urgent	NGI_UK	in progress	2021-03-01 10:22:00	Accessing multi-VO Rucio	EGI
150713	USER	dteam	RAL-LCG2	less urgent	NGI_UK	in progress	2021-02-25 10:37:00	VO names longer than three characters on multi-VO Rucio	EGI
150679	TEAM	lhcb	RAL-LCG2	top priority	NGI_UK	reopened	2021-03-11 06:44:00	Low number of LHCb running jobs at RAL	WLCG
150653	TEAM	lhcb	RAL-LCG2	urgent	NGI_UK	on hold	2021-03-02 12:15:00	FTS error: libX509SciTokensIssuer.so not found	WLCG
150580	USER	other	RAL-LCG2	urgent	NGI_UK	in progress	2021-02-26 10:44:00	Multi-VO Rucio server at RAL - Documentation	EGI
150567	USER	other	RAL-LCG2	urgent	NGI_UK	in progress	2021-02-18 10:33:00	Add gridpp VO to multi-VO Rucio instance	EGI
150482	USER	cms	RAL-LCG2	very urgent	NGI_UK	in progress	2021-03-12 16:16:00	enabling AREX service at ARC-CE(s) at (T1_UK_RAL)	WLCG
150399	USER	cms	RAL-LCG2	less urgent	NGI_UK	on hold	2021-02-11 08:57:00	WebDAV endpoint at RAL	WLCG
146651	TEAM	atlas	RAL-LCG2	urgent	NGI_UK	on hold	2021-02-16 17:37:00	singularity and user NS setup at RAL	WLCG
142350	TEAM	lhcb	RAL-LCG2	top priority	NGI_UK	on hold	2021-01-15 11:18:00	Proble accessing some LHCb files at RAL	WLCG

Closed tickets:

Ticket-ID	Type	VO	Site	Priority	Responsible Unit	Status	Last Update	Subject	Scope
150685	USER	cms	RAL-LCG2	urgent	NGI_UK	closed	2021-03-10 23:59:00	SAM tests for your ARC-CEs are failing at T1_UK_RAL	WLCG
150581	USER	other	RAL-LCG2	urgent	NGI_UK	closed	2021-03-11 23:59:00	Rucio file upload file upload Tier-1 ECHO store problem	EGI

CMS:https://cmsst.web.cern.ch/sitereadiness/report.html#T1_UK_RAL



ATLAS:

<http://hammercloud.cern.ch/hc/app/atlas/siteoverview/?site=RAL-LCG2&startTime=2021-01-06&endTime=2021-01-13&templateType=isGolden>

[RAL Tier1 Experiments Liaison](#) | [HammerCloud-ATLAS](#) | [WLCG SiteMon Historical Profile](#) | +

[hammercloud.cern.ch/hc/app/atlas/siteoverview/?site=RAL-LCG2&startTime=2021-03-10](#)

Getting Started Most Visited New Tab Getting Started RT at a glance La Vuelta 2018 Windy: Show / add m... New Tab Other Bookmarks

RAL-LCG2_MCORE

957 (functional) ... 841 (functional) ... 839 (functional) ...

Template: 957 (functional) - PFT mc15 Sim_tf 21.0.16

Time	0	1	2	3	4	5	6	7	8	9	10	11	12	13	14	15	16	17	18	19	20	21	22	23	Eff[%]	
17/03/21	c	c	s	s	c	c	c	c	c	c	c	c	c	c	s	c	c	c	s	m	0	0	0	0	0	100
16/03/21	s	c	c	c	c	c	c	c	c	c	c	c	c	c	c	c	c	c	c	c	s	c	c	s	c	100
15/03/21	s	c	c	c	c	c	c	c	c	c	c	c	c	c	s	m	c	c	s	c	c	c	c	c	c	98
14/03/21	c	c	c	c	c	c	c	c	c	c	c	c	c	c	s	c	c	s	c	c	c	c	c	s	s	100
13/03/21	c	c	c	c	c	c	c	c	c	c	c	c	c	c	s	c	c	c	c	s	c	c	c	c	c	100
12/03/21	s	c	c	c	c	c	c	c	c	c	c	c	c	c	c	c	c	c	c	c	c	c	c	s	m	98
11/03/21	s	s	s	c	c	s	s	s	s	s	s	c	s	s	c	c	c	c	c	c	c	c	c	c	c	89
10/03/21	c	c	c	s	c	s	c	s	c	c	c	c	c	c	s	s	s	s	s	s	c	s	s	s	c	100

Error Report [+] Expand

Show entries Search:

Report problem

[RAL Tier1 Experiments Liaison](#) | [HammerCloud-ATLAS](#) | [WLCG SiteMon Historical Profile](#) | +

[hammercloud.cern.ch/hc/app/atlas/siteoverview/?site=RAL-LCG2&startTime=2021-03-10](#)

Getting Started Most Visited New Tab Getting Started RT at a glance La Vuelta 2018 Windy: Show / add m... New Tab Other Bookmarks

Time line for from 2021-03-10 to 2021-03-18:

[Export json](#)

RAL

957 (functional) ... 952 (functional) ... 841 (functional) ... 883 (functional) ... 839 (functional) ...
 1013 (functional) ...

Template: 952 (functional) - AFT Eventloop 21.2.1 Analy

Time	0	1	2	3	4	5	6	7	8	9	10	11	12	13	14	15	16	17	18	19	20	21	22	23	Eff[%]	
17/03/21	s	c	c	c	c	c	c	c	c	c	c	c	c	c	s	m	0	0	0	0	0	0	0	0	98	
16/03/21	c	c	c	c	c	c	c	c	c	c	c	c	c	c	m	c	c	c	c	c	c	c	c	c	c	99
15/03/21	c	c	c	c	c	c	c	c	c	c	c	c	c	c	f	c	c	c	c	c	c	c	c	c	c	99
14/03/21	c	s	c	c	c	c	c	c	c	c	c	c	c	c	c	c	c	s	c	c	c	c	c	c	c	100
13/03/21	c	c	c	c	c	c	c	c	c	c	c	c	c	c	c	c	c	c	c	c	c	s	c	c	c	100
12/03/21	c	c	c	c	c	c	c	c	c	c	c	c	c	c	r	c	c	c	c	c	c	c	c	s	f	99
11/03/21	c	c	c	c	c	c	c	c	c	c	c	c	c	c	c	f	m	s	c	c	c	c	c	c	c	95
10/03/21	c	c	s	c	c	c	c	c	c	c	c	c	c	c	c	c	c	c	c	c	c	c	c	c	c	100

Error Report [+] Expand

Show entries Search:

Report problem

[RAL Tier1 Experiments Liaison](#) | [HammerCloud-ATLAS](#) | [WLCG SiteMon Historical Profil](#)

[hammercloud.cern.ch/hc/app/atlas/siteoverview/?site=RAL-LCG2&startTime=2021-03-10&endT...](#)

Getting Started | Most Visited | New Tab | Getting Started | RT at a glance | La Vuelta 2018 | Windy: Show / add m... | New Tab | Grafana - Batch syste... | Other Bookmarks

RAL-LCG2_TEST

957 (functional) ... 952 (functional) ... 841 (functional) ... 883 (functional) ... 839 (functional) ...
 1013 (functional)...

Template: 952 (functional) - AFT Eventloop 21.2.1 Analy

Time	0	1	2	3	4	5	6	7	8	9	10	11	12	13	14	15	16	17	18	19	20	21	22	23	Eff%			
17/03/21	f	f	s	f	c	f	s	c	c	s	c	c	f	s	c	s	c	f	s	c	c	f	s	c	f	s	c	64
16/03/21	f	f	s	m	s	c	c	m	s	c	m	s	c	f	s	m	s	s	m	s	c	f	s	f	f	s	c	55
15/03/21	m	s	s	c	m	s	s	c	f	f	s	f	s	c	c	c	s	f	s	c	s	m	s	s	c	m	c	53
14/03/21	s	c	c	f	m	s	s	c	s	c	c	c	m	f	f	s	c	c	c	c	c	c	m	s	m	s	c	72
13/03/21	m	s	s	c	m	s	f	s	m	s	c	f	s	c	m	s	f	s	c	c	c	f	m	s	s	c	f	60
12/03/21	f	m	0	0	c	c	m	0	c	m	0	0	c	c	m	0	c	c	m	0	s	c	s	f	s	m	s	61
11/03/21	0	s	c	f	0	0	f	0	f	s	m	0	c	s	m	f	s	c	c	f	f	0	0	c	c	m	0	42
10/03/21	f	c	s	f	0	c	s	f	f	s	f	0	c	f	s	c	f	c	c	m	0	m	0	0	m	0	f	38

Error Report [+] Expand

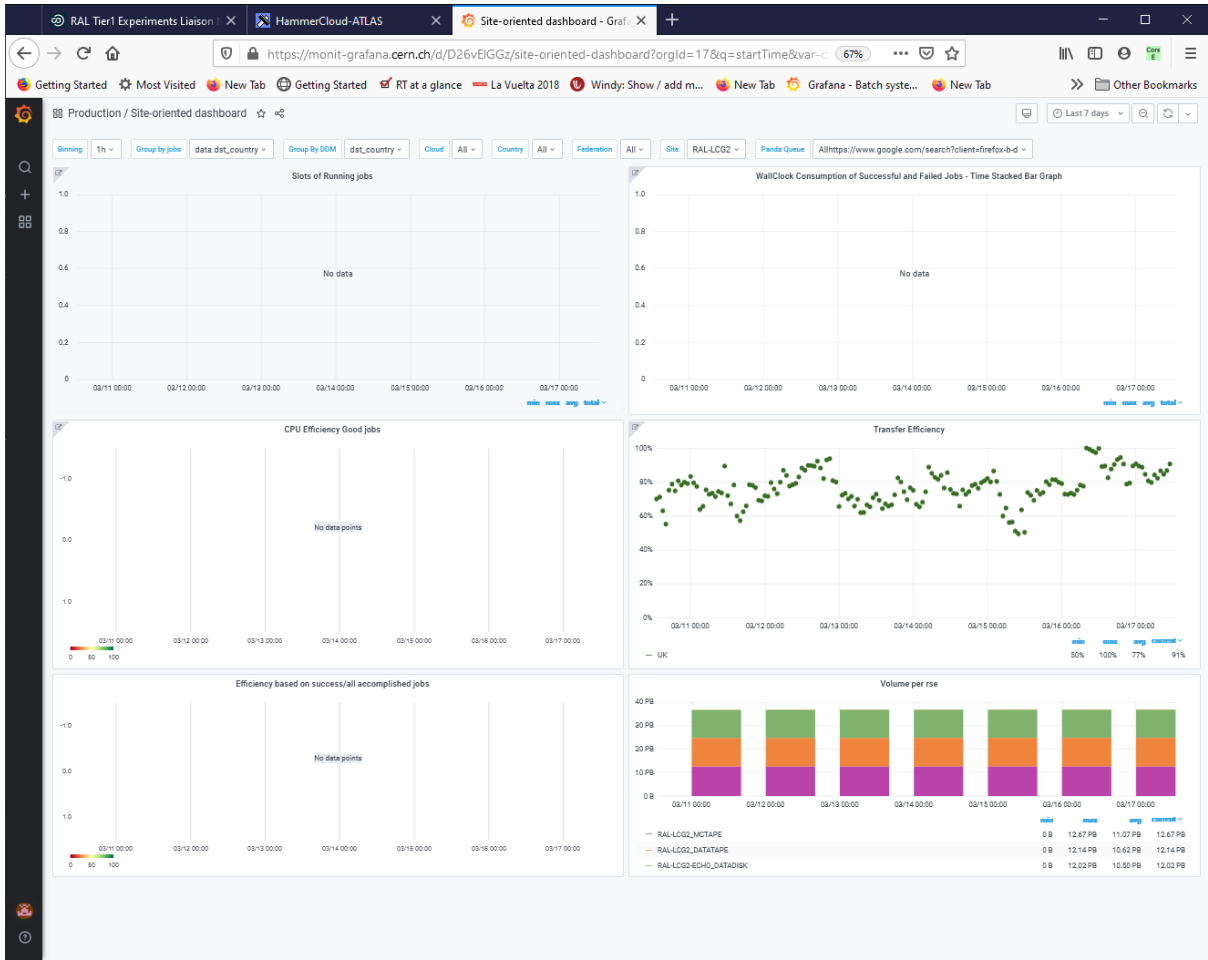
Show entries Search:

Showing 1 to 150 of 150 entries Report problem

bigpanda.cern.ch/jobs/?pandaId=5000620970,5000625075

Site Dashboard:

https://monit-grafana.cern.ch/d/D26vElGGz/site-oriented-dashboard?orgId=17&var-groupby_jobs=data.dst_country&var-groupby_ddm=dst_country&var-cloud=All&var-country=All&var-federation=All&var-site=RAL-LCG2&var-computingsite=All



LHCB:

https://monit-grafana.cern.ch/d/000000619/wlcb-sitemon-historical-profiles?orgId=20&from=now-30d&to=now&var-vo=lhcb&var-profile=LHCB_CRITICAL&var-dst_tier=1&var-dst_country=UK&var-dst_federation=All&var-dst_experiment_site=LCG.RAL.uk&var-service_flavour=ARC-CE&var-dst_hostname=All&var-recomputation=status

