

## Issues/Successes this week:

lcg-support now works again in RT helpdesk

Firewall Audit

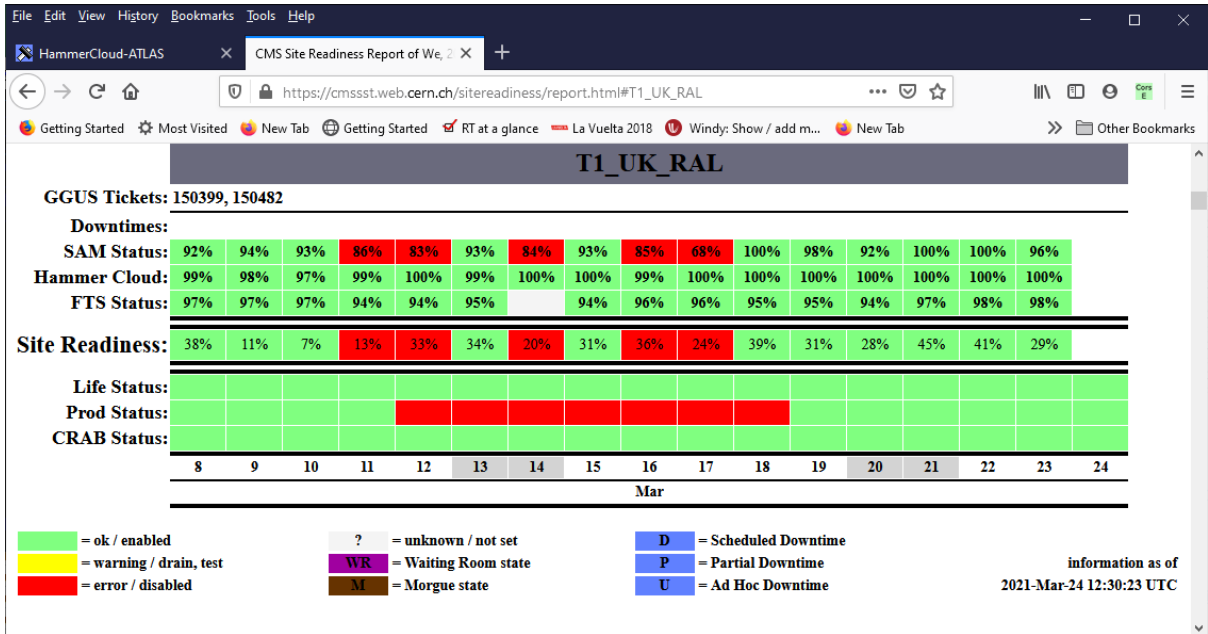
CMS jobs set to 3k slots

## Open Tickets:

Ticket-ID	Type	VO	Site	Priority	Responsible Unit	Status	Last Update	Subject	Scope
151098	USER	atlas	RAL-LCG2	urgent	NGI_UK	in progress	2021-03-24 10:40:00	High failure rate at RAL-LCG2_TEST	WLCG
150898	TEAM	lhcb	RAL-LCG2	very urgent	NGI_UK	in progress	2021-03-24 11:40:00	Some files cannot be downloaded: bad data was encountered	WLCG
150892	USER	none	RAL-LCG2	less urgent	NGI_UK	in progress	2021-03-17 14:24:00	VOMS-Admin queries from storage-gridmap1.gridpp.rl.ac.uk	EGI
150888	USER	dteam	RAL-LCG2	less urgent	NGI_UK	in progress	2021-03-09 14:27:00	pscheduler not to be running on lcgps01.gridpp.rl.ac.uk	EGI
150762	USER	dteam	RAL-LCG2	urgent	NGI_UK	in progress	2021-03-01 10:22:00	Accessing multi-VO Rucio	EGI
150713	USER	dteam	RAL-LCG2	less urgent	NGI_UK	in progress	2021-02-25 10:37:00	VO names longer than three characters on multi-VO Rucio	EGI
150679	TEAM	lhcb	RAL-LCG2	top priority	NGI_UK	reopened	2021-03-22 10:37:00	Low number of LHCb running jobs at RAL	WLCG
150653	TEAM	lhcb	RAL-LCG2	urgent	NGI_UK	on hold	2021-03-02 12:15:00	FTS error: libX509SciTokensIssuer.so not found	WLCG
150580	USER	other	RAL-LCG2	urgent	NGI_UK	in progress	2021-02-26 10:44:00	Multi-VO Rucio server at RAL - Documentation	EGI
150567	USER	other	RAL-LCG2	urgent	NGI_UK	in progress	2021-02-18 10:33:00	Add gridpp VO to multi-VO Rucio instance	EGI
150482	USER	cms	RAL-LCG2	very urgent	NGI_UK	in progress	2021-03-19 13:08:00	enabling AREX service at ARC-CE(s) at (T1_UK_RAL)	WLCG
150399	USER	cms	RAL-LCG2	less urgent	NGI_UK	on hold	2021-02-11 08:57:00	WebDAV endpoint at RAL	WLCG
146651	TEAM	atlas	RAL-LCG2	urgent	NGI_UK	on hold	2021-03-22 13:54:00	singularity and user NS setup at RAL	WLCG
142350	TEAM	lhcb	RAL-LCG2	top priority	NGI_UK	on hold	2021-01-15 11:18:00	Proble accessing some LHCb files at RAL	WLCG

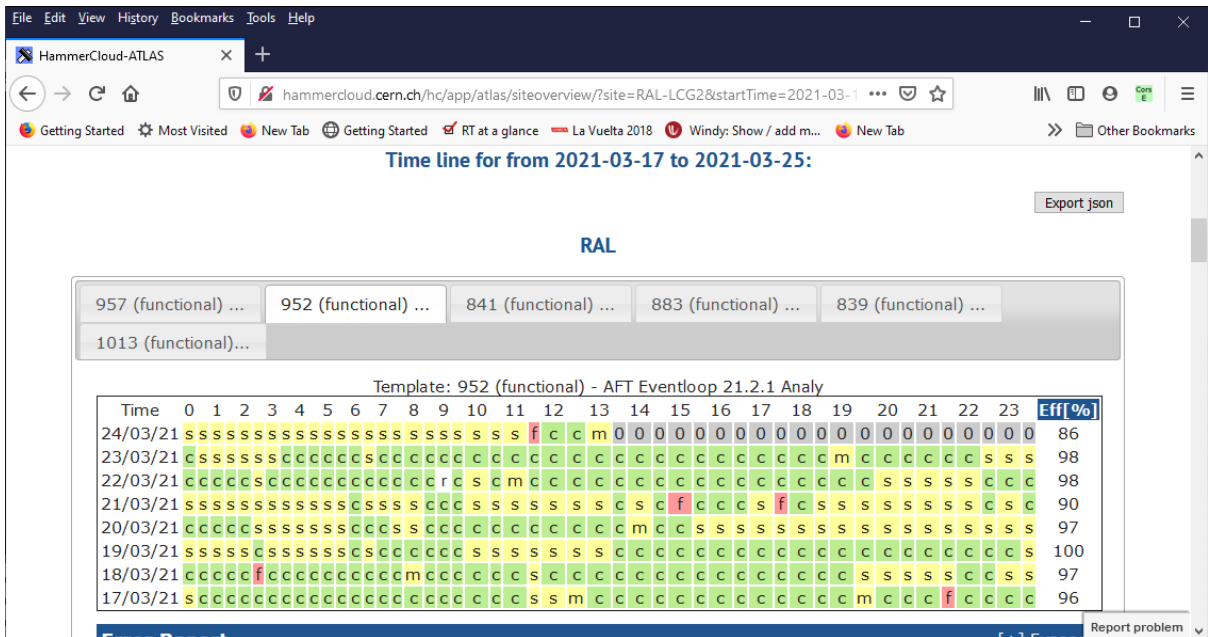
## Closed tickets

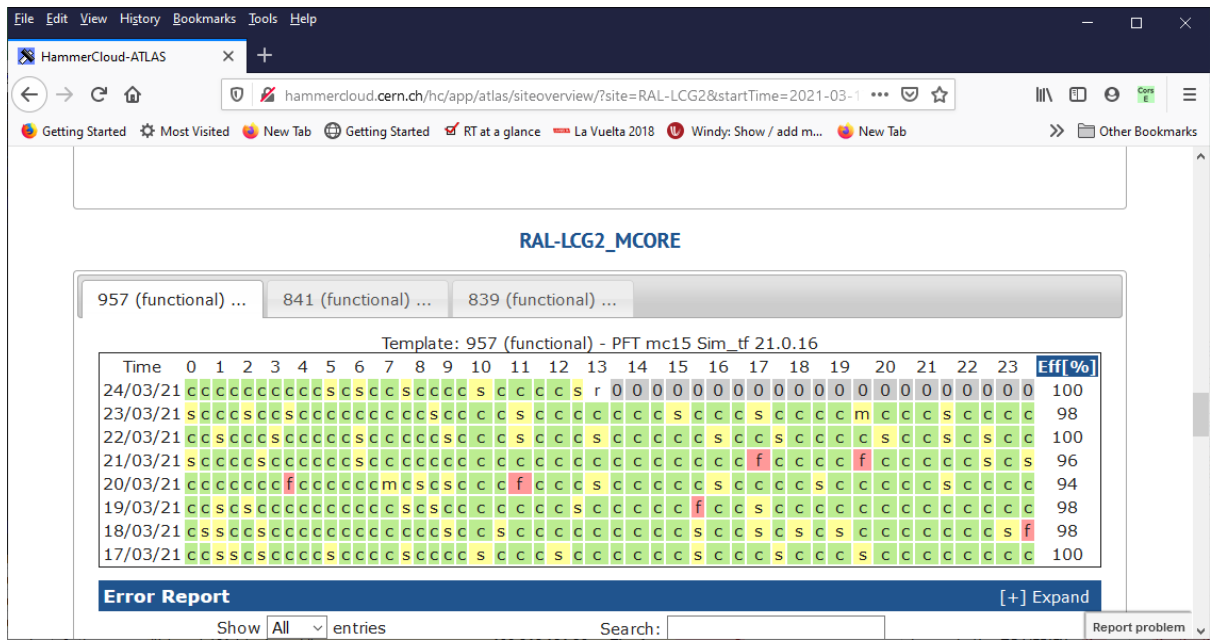
CMS:[https://cmsst.web.cern.ch/sitereadiness/report.html#T1\\_UK\\_RAL](https://cmsst.web.cern.ch/sitereadiness/report.html#T1_UK_RAL)



**ATLAS:**

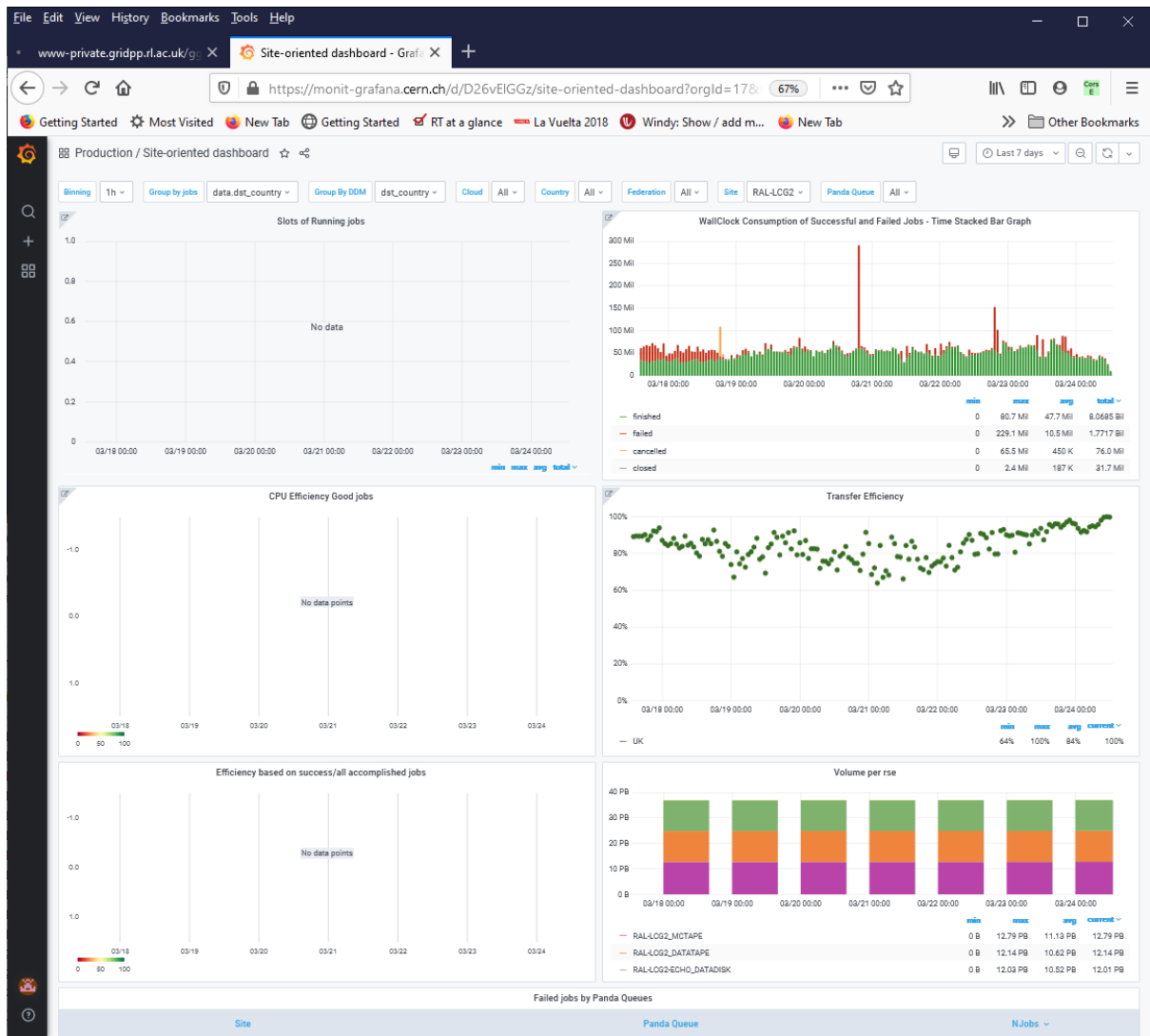
<http://hammercloud.cern.ch/hc/app/atlas/siteoverview/?site=RAL-LCG2&startTime=2021-01-06&endTime=2021-01-13&templateType=isGolden>





Site Dashboard:

[https://monit-grafana.cern.ch/d/D26vElGGz/site-oriented-dashboard?orgId=17&var-groupby\\_jobs=data.dst\\_country&var-groupby\\_ddm=dst\\_country&var-cloud=All&var-country=All&var-federation=All&var-site=RAL-LCG2&var-computingsite=All](https://monit-grafana.cern.ch/d/D26vElGGz/site-oriented-dashboard?orgId=17&var-groupby_jobs=data.dst_country&var-groupby_ddm=dst_country&var-cloud=All&var-country=All&var-federation=All&var-site=RAL-LCG2&var-computingsite=All)



**LHCB:**

[https://monit-grafana.cern.ch/d/000000619/wlwg-sitemon-historical-profiles?orgId=20&from=now-30d&to=now&var-vo=lhcb&var-profile=LHCB CRITICAL&var-dst tier=1&var-dst country=UK&var-dst federation=All&var-dst experiment site=LCG.RAL.uk&var-service flavour=ARC-CE&var-dst hostname=All&var-recomputation=status](https://monit-grafana.cern.ch/d/000000619/wlwg-sitemon-historical-profiles?orgId=20&from=now-30d&to=now&var-vo=lhcb&var-profile=LHCB%20CRITICAL&var-dst%20tier=1&var-dst%20country=UK&var-dst%20federation=All&var-dst%20experiment%20site=LCG.RAL.uk&var-service%20flavour=ARC-CE&var-dst%20hostname=All&var-recomputation=status)

File Edit View History Bookmarks Tools Help

HammerCloud-ATLAS CMS Site Readiness Report of We WLCG SiteMon Historical Profil

https://monit-grafana.cern.ch/d/00000619/wlcb-sitemon-historical-profiles?i 67%

Getting Started Most Visited New Tab Getting Started RT at a glance La Vuelta 2018 Windy: Show / add m... New Tab Other Bookmarks

SiteMon / WLCG SiteMon Historical Profiles Last 7 days UTC

VO lhc v Profile LHCb\_CRITICAL Tier 1 Country UK Federation All Site LCG.RAL.uk Flavour ARC-CE Hostname All Recomputations status More Dashboards

Website

This dashboard shows the availability, reliability, and status computation from ETF tests. To use it:  
1. Apply the desired selection using the filters on top (dashboard will also load faster).  
2. Click on 'Availability & Reliability', 'Site Status', 'Endpoint Status', or 'Test Status' to see results. Scroll up/down for more results.

Availability & Reliability (2 panels)

Site Status (1 panel)

Endpoint Status

[LCG.RAL.uk] [ARC-CE] [arc-ce-test02.gridpp.rl.ac.uk] lhc:	
[LCG.RAL.uk] [ARC-CE] [arc-ce01.gridpp.rl.ac.uk] lhc:	OK
[LCG.RAL.uk] [ARC-CE] [arc-ce02.gridpp.rl.ac.uk] lhc:	OK
[LCG.RAL.uk] [ARC-CE] [arc-ce03.gridpp.rl.ac.uk] lhc:	OK
[LCG.RAL.uk] [ARC-CE] [arc-ce04.gridpp.rl.ac.uk] lhc:	OK
[LCG.RAL.uk] [ARC-CE] [arc-ce05.gridpp.rl.ac.uk] lhc:	OK OK OK OK