

## Issues/Successes this week:

CMS job limit removed  
Dune running 400 multicore jobs

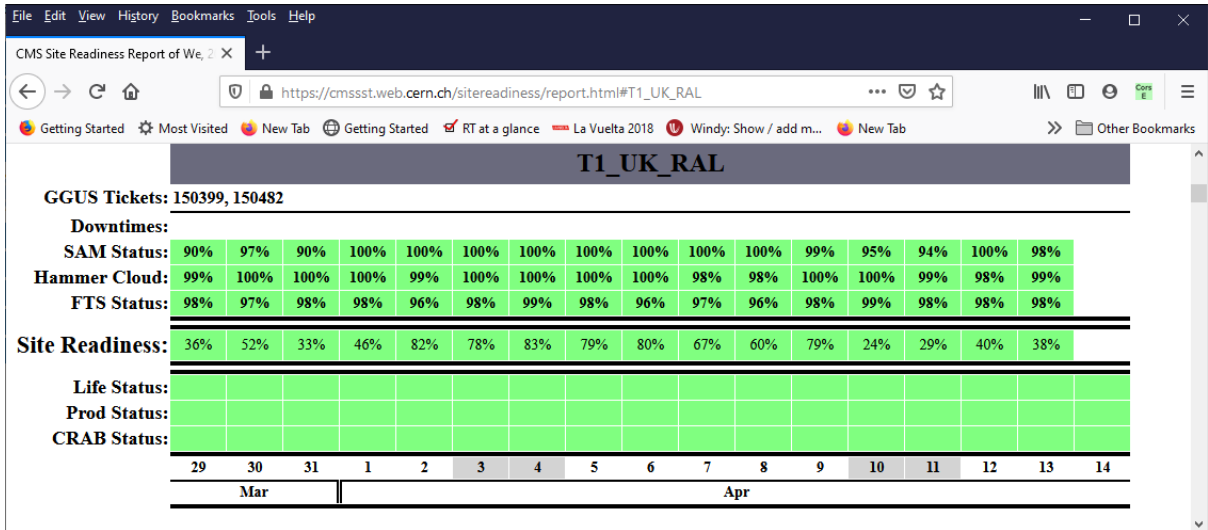
## Open Tickets:

Ticket-ID	Type	VO	Site	Priority	Responsible Unit	Status	Last Update	Subject	Scope
151098	USER	atlas	RAL-LCG2	urgent	NGI_UK	in progress	2021-04-12 09:20:00	High failure rate at RAL-LCG2_TEST	WLCG
151081	TEAM	lhcb	RAL-LCG2	very urgent	NGI_UK	in progress	2021-04-01 14:25:00	CTA->RAL disk transfers failing	WLCG
150898	TEAM	lhcb	RAL-LCG2	very urgent	NGI_UK	in progress	2021-04-12 04:45:00	Some files cannot be downloaded: bad data was encountered	WLCG
150892	USER	none	RAL-LCG2	less urgent	NGI_UK	in progress	2021-03-29 14:45:00	VOMS-Admin queries from storage-gridmap1.gridpp.rl.ac.uk	EGI
150888	USER	dteam	RAL-LCG2	less urgent	NGI_UK	in progress	2021-04-13 14:12:00	pscheduler not to be running on lcgps01.gridpp.rl.ac.uk	EGI
150762	USER	dteam	RAL-LCG2	urgent	NGI_UK	waiting for reply	2021-04-12 10:00:00	Accessing multi-VO Rucio	EGI
150713	USER	dteam	RAL-LCG2	less urgent	NGI_UK	in progress	2021-02-25 10:37:00	VO names longer than three characters on multi-VO Rucio	EGI
150653	TEAM	lhcb	RAL-LCG2	urgent	NGI_UK	in progress	2021-04-13 14:10:00	FTS error: libX509SciTokensIssuer.so not found	WLCG
150580	USER	other	RAL-LCG2	urgent	NGI_UK	waiting for reply	2021-04-12 09:56:00	Multi-VO Rucio server at RAL - Documentation	EGI
150567	USER	other	RAL-LCG2	urgent	NGI_UK	in progress	2021-03-25 11:00:00	Add gridpp VO to multi-VO Rucio instance	EGI
150482	USER	cms	RAL-LCG2	very urgent	NGI_UK	in progress	2021-04-01 12:53:00	enabling AREX service at ARC-CE(s) at (T1_UK_RAL)	WLCG
150399	USER	cms	RAL-LCG2	less urgent	NGI_UK	on hold	2021-03-25 10:58:00	WebDAV endpoint at RAL	WLCG
142350	TEAM	lhcb	RAL-LCG2	top priority	NGI_UK	on hold	2021-04-14 09:08:00	Proble accessing some LHCB files at RAL	WLCG

## Closed tickets

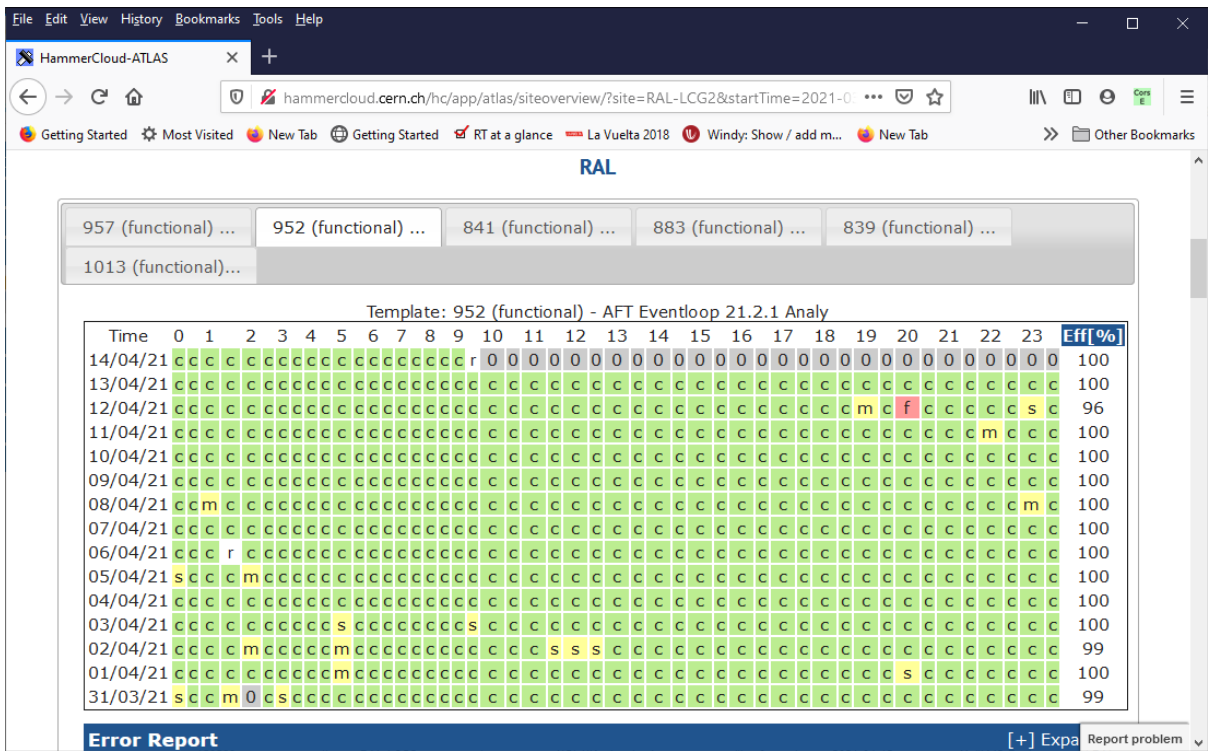
Ticket-ID	Type	VO	Site	Priority	Responsible Unit	Status	Last Update	Subject	Scope
151238	USER	cms	RAL-LCG2	urgent	NGI_UK	solved	2021-04-07 12:44:00	One CE is not executing SAM tests at T1_UK_RAL	WLCG
151225	USER	dune	RAL-LCG2	urgent	NGI_UK	solved	2021-04-07 06:05:00	Add Distinguished Names of all DUNE VO users to RAL_ECHO storage element	EGI
151224	USER	dune	RAL-LCG2	urgent	NGI_UK	solved	2021-04-07 11:39:00	Add Distinguished Names of all DUNE VO users to RAL_ECHO storage element	EGI
150679	TEAM	lhcb	RAL-LCG2	top priority	NGI_UK	closed	2021-04-07 23:59:00	Low number of LHCB running jobs at RAL	WLCG
146651	TEAM	atlas	RAL-LCG2	urgent	NGI_UK	solved	2021-04-13 12:14:00	singularity and user NS setup at RAL	WLCG

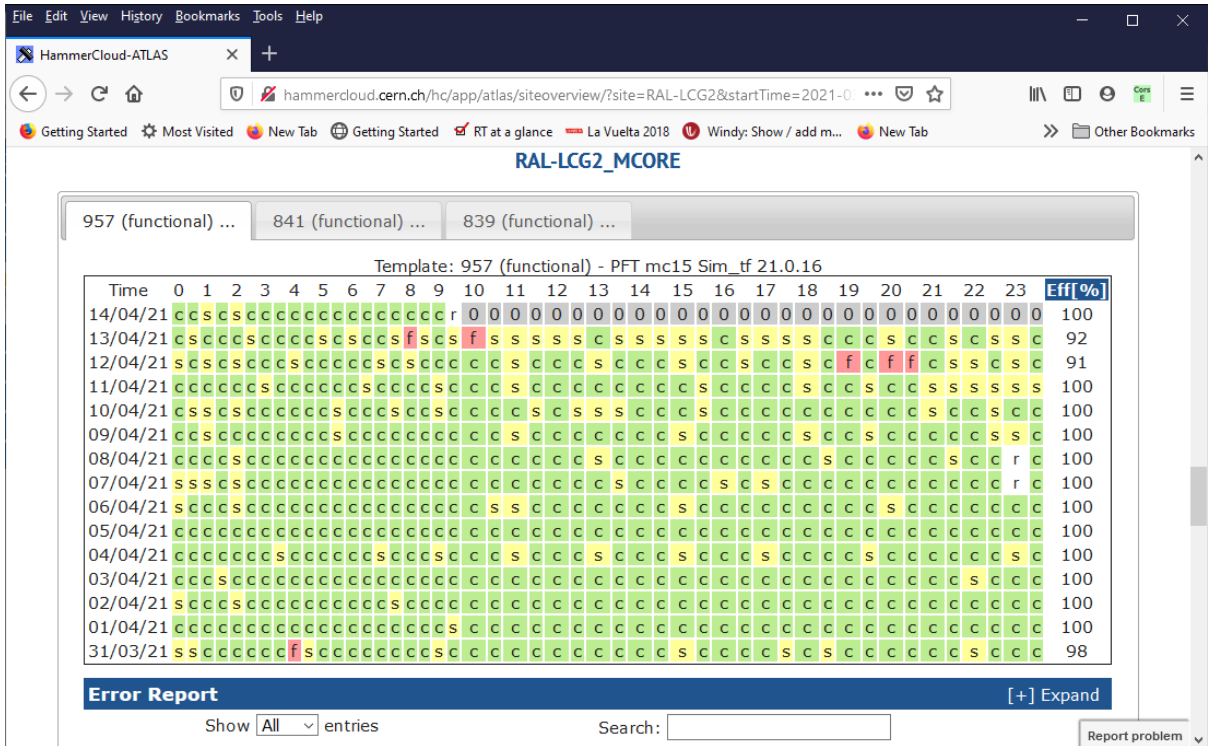
CMS:[https://cmsst.web.cern.ch/sitereadiness/report.html#T1\\_UK\\_RAL](https://cmsst.web.cern.ch/sitereadiness/report.html#T1_UK_RAL)



**ATLAS:**

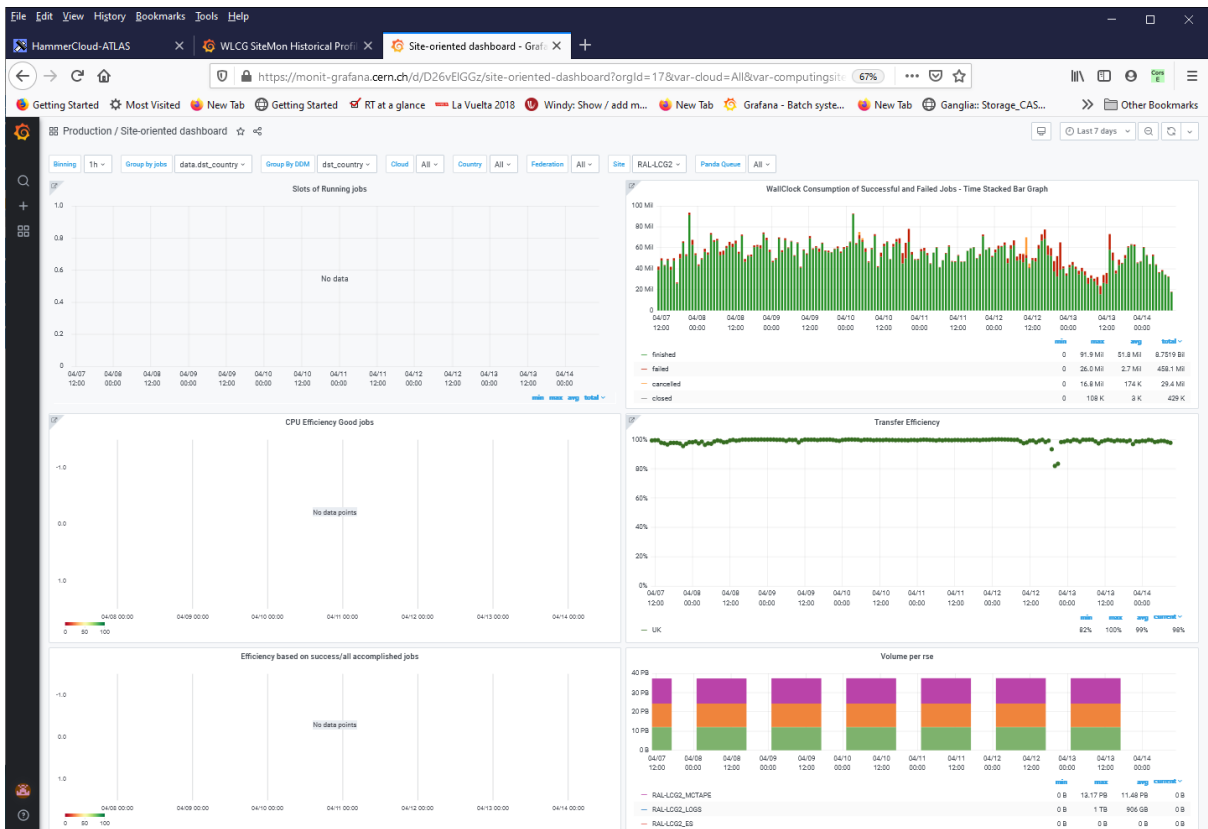
<http://hammercloud.cern.ch/hc/app/atlas/siteoverview/?site=RAL-LCG2&startTime=2021-01-06&endTime=2021-01-13&templateType=isGolden>





Site Dashboard:

[https://monit-grafana.cern.ch/d/D26vEIGGz/site-oriented-dashboard?orgId=17&var-groupby\\_jobs=data.dst\\_country&var-groupby\\_ddm=dst\\_country&var-cloud=All&var-country=All&var-federation=All&var-site=RAL-LCG2&var-computingsite=All](https://monit-grafana.cern.ch/d/D26vEIGGz/site-oriented-dashboard?orgId=17&var-groupby_jobs=data.dst_country&var-groupby_ddm=dst_country&var-cloud=All&var-country=All&var-federation=All&var-site=RAL-LCG2&var-computingsite=All)



## LHCB:

[https://monit-grafana.cern.ch/d/000000619/wlcb-sitemon-historical-profiles?orgId=20&from=now-30d&to=now&var-vo=lhcb&var-profile=LHCB\\_CRITICAL&var-dst\\_tier=1&var-dst\\_country=UK&var-dst\\_federation=All&var-dst\\_experiment\\_site=LCG.RAL.uk&var-service\\_flavour=ARC-CE&var-dst\\_hostname=All&var-recomputation=status](https://monit-grafana.cern.ch/d/000000619/wlcb-sitemon-historical-profiles?orgId=20&from=now-30d&to=now&var-vo=lhcb&var-profile=LHCB_CRITICAL&var-dst_tier=1&var-dst_country=UK&var-dst_federation=All&var-dst_experiment_site=LCG.RAL.uk&var-service_flavour=ARC-CE&var-dst_hostname=All&var-recomputation=status)

